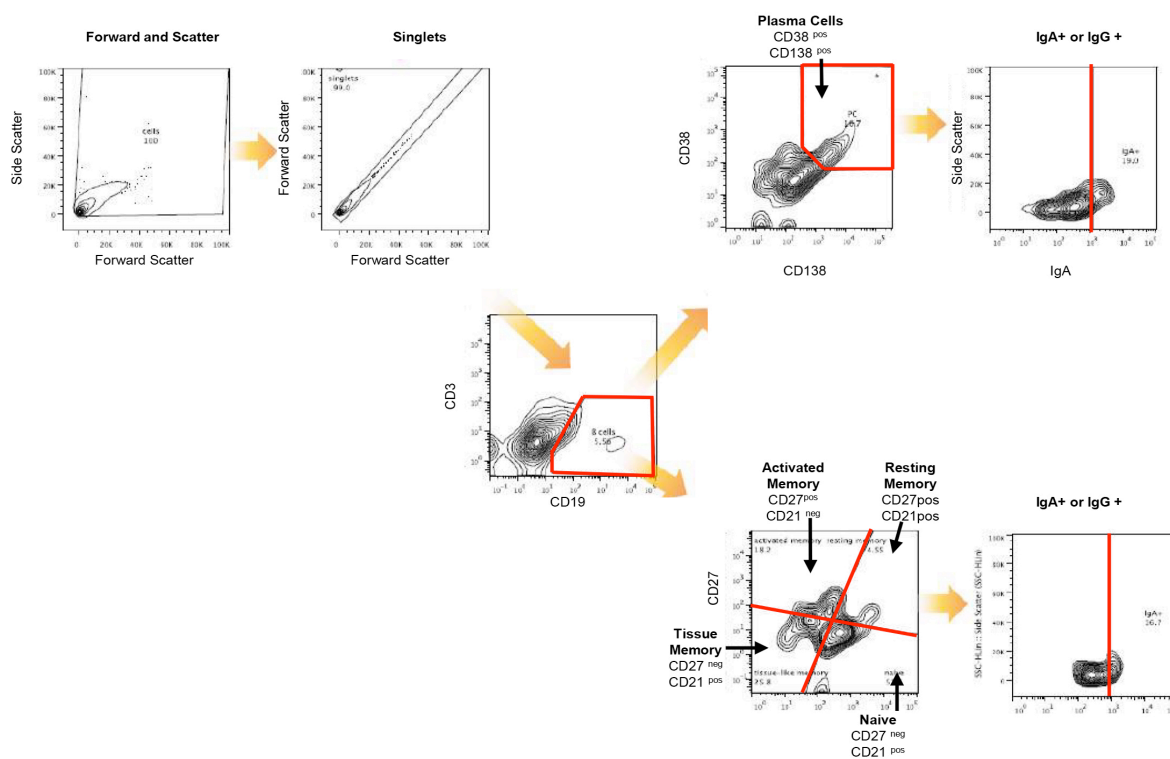


Persistent but Dysfunctional Mucosal SARS-CoV-2-specific IgA and Low Lung IL-1beta associate with COVID 19 Fatal Outcome: a Cross-sectional Analysis

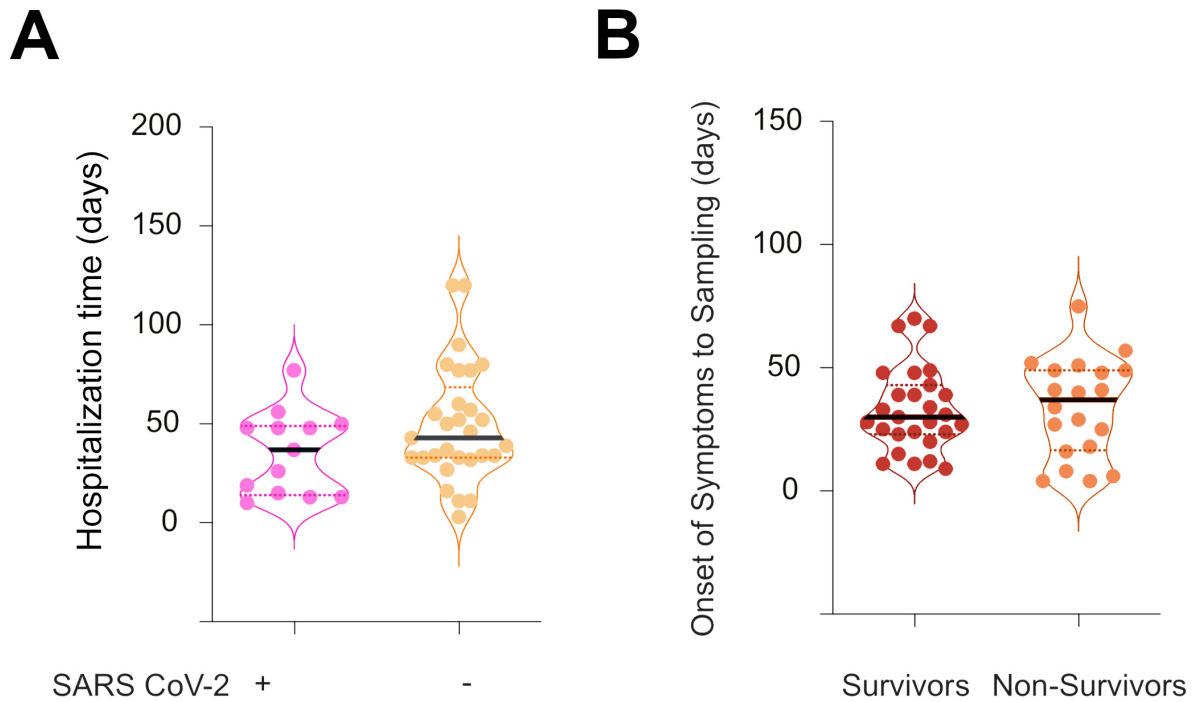
Maria Julia Ruiz ^{1,2,3}, Gabriel Siracusano⁴, Andréa Cottignies-Calamarte ^{1,2,3}, Daniela Tudor ^{1,2,3}, Fernando Real ^{1,2,3}, Aiwei Zhu ^{1,2,3}, Claudia Pastori ⁴, Claude Capron ⁵, Arielle R. Rosenberg ^{1,2,3,7}, Nigel Temperton ⁶, Diego Cantoni ⁶, Hanqing Liao ⁸, Nicola Ternette ⁸, Pierre Moine ⁹, Mathieu Godement ⁹, Guillaume Geri ^{10,11}, Jean-Daniel Chiche ¹², Djillali Annane ⁹,

Supplementary Figures and Legends

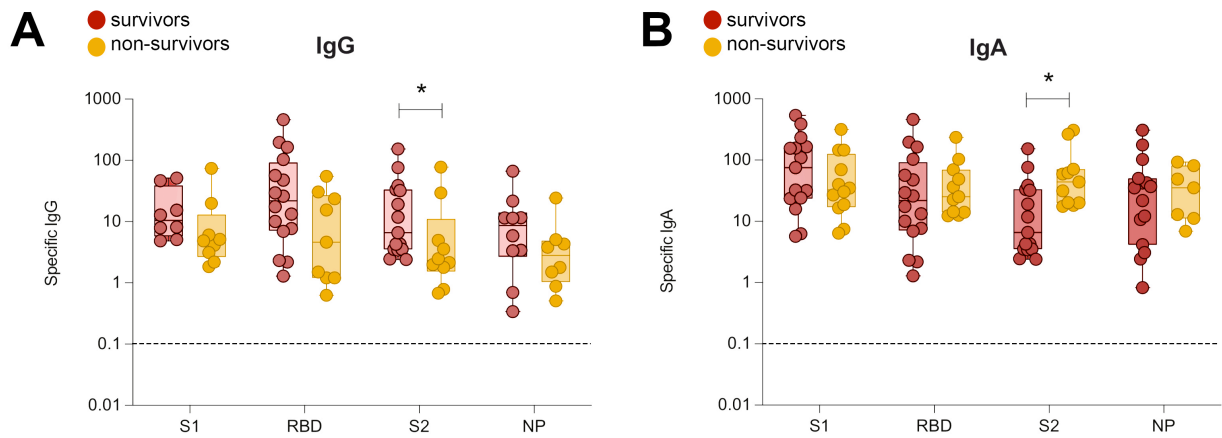


S1: Flow cytometry gating strategy for the characterization of B cell from BAL of SARS-CoV-2 infected individuals. Representative dot plot of BAL single cell suspensions studied by multiparametric flow cytometry, showing the gating strategy. After cell-doublet exclusion (Forward Scatter vs Forward Scatter, Singlet Dot Plot) B cells were gated based on their expression of CD19. After gating on CD19⁺ B cell population, Naïve B cells were defined as CD27^{neg} CD21^{pos}, Resting Memory B cells as CD27^{pos} CD21^{pos}, Activated Memory B cells as

CD27^{pos} CD21^{neg}, Tissue Memory B cells as CD27^{neg} CD21^{pos} and Plasma B cells as CD38^{pos} CD138^{pos}. Each population was then gated to measure their expression of IgG or IgA.



S2: Hospitalization time in SARS-CoV-2 infected individuals. (A) Comparison of the duration of hospitalization (days) in SARS-CoV-2+ BAL and SARS-CoV-2- BAL individuals. **(B)** Comparison of the time of onset of symptoms to sampling in Survivors vs Non-Survivors.



S3: Comparison of specific IgG and IgA anti SARS-CoV-2 antibody response in Survivors vs Non-Survivors. (A) Comparison between IgG responses against S1, S2, RBD and NP in Survivors vs Non-Survivors. **(B)** Comparison between IgA responses against S1, S2, RBD and NP in Survivors vs Non-Survivors. *p* values were calculated by using *Mann-Whitney* test. Dashed line: Cut-off value for detection.