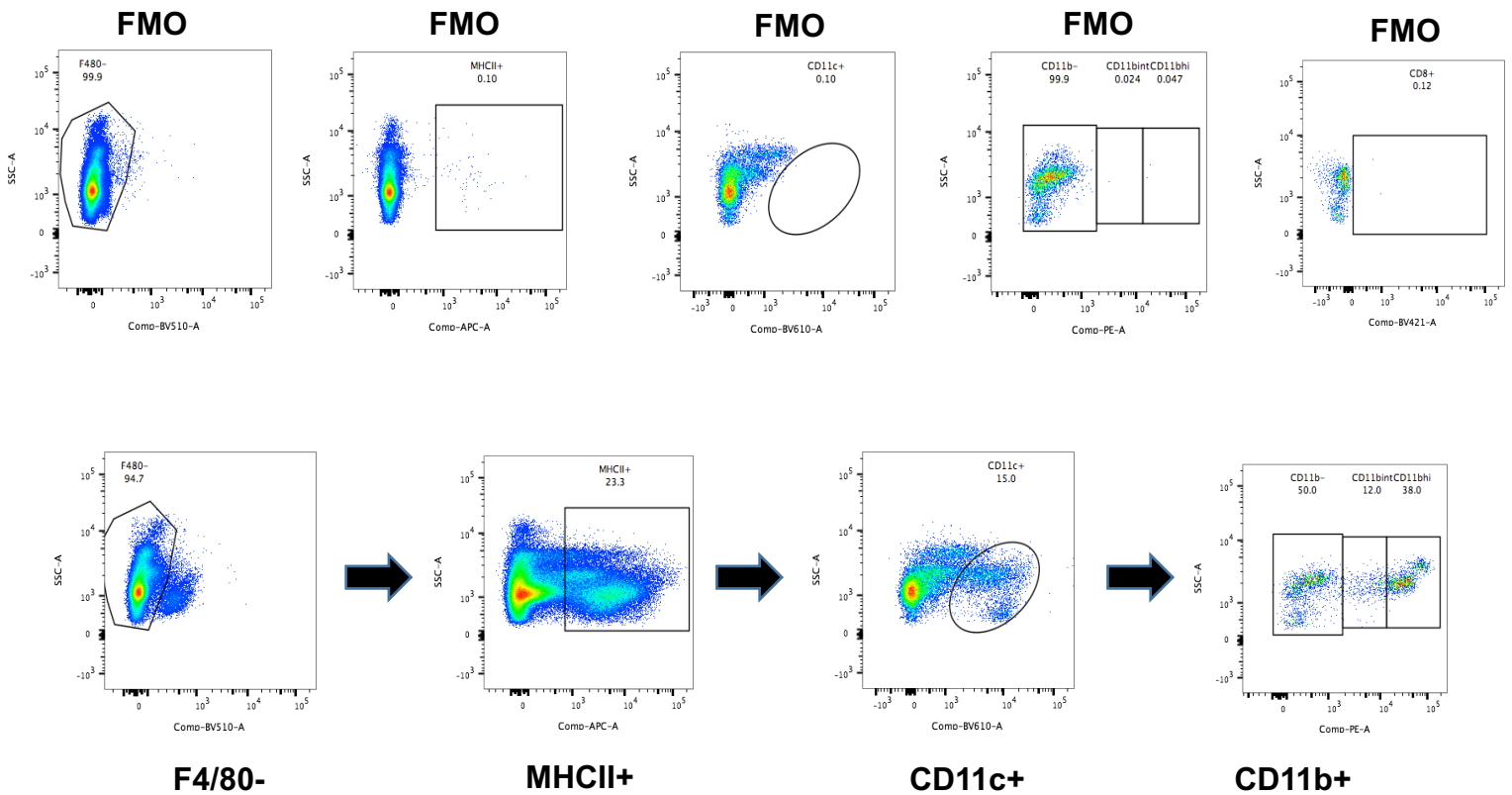


Supplementary Figure 1 – GO gene set analysis for all gene comparisons between WT and ER α null. Bar chart revealing the results of GO analysis on all DEGs between WT and ER α null. The list supplied to GSEA includes a total of 24,000 genes, where absolute log₂ fold change between the two strains were used as scores.



Supplementary Figure 2 – Flow cytometry analysis gating strategy. Gating strategy for flow cytometry analysis used in Figure 4. Includes fluorescence minus one (FMO)s for time, singlets, live, Lin-, F4/80-, MHCII+, CD11c^{hi}, and CD11b+.