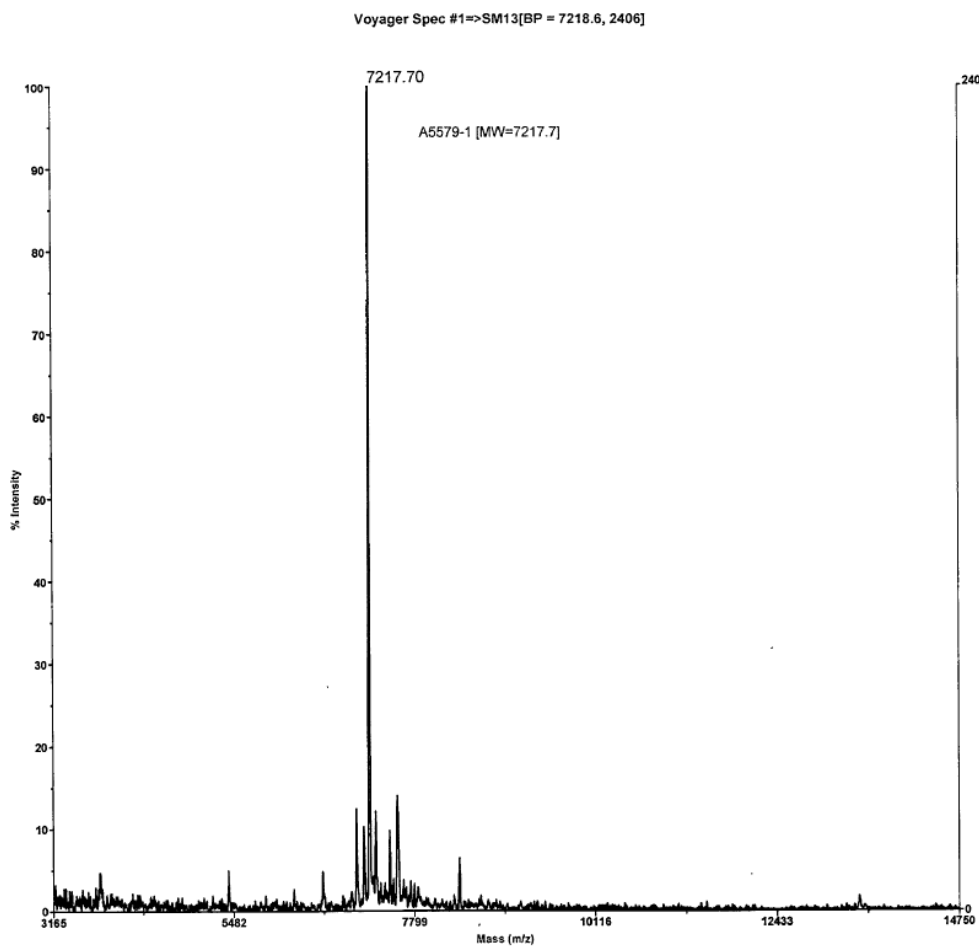
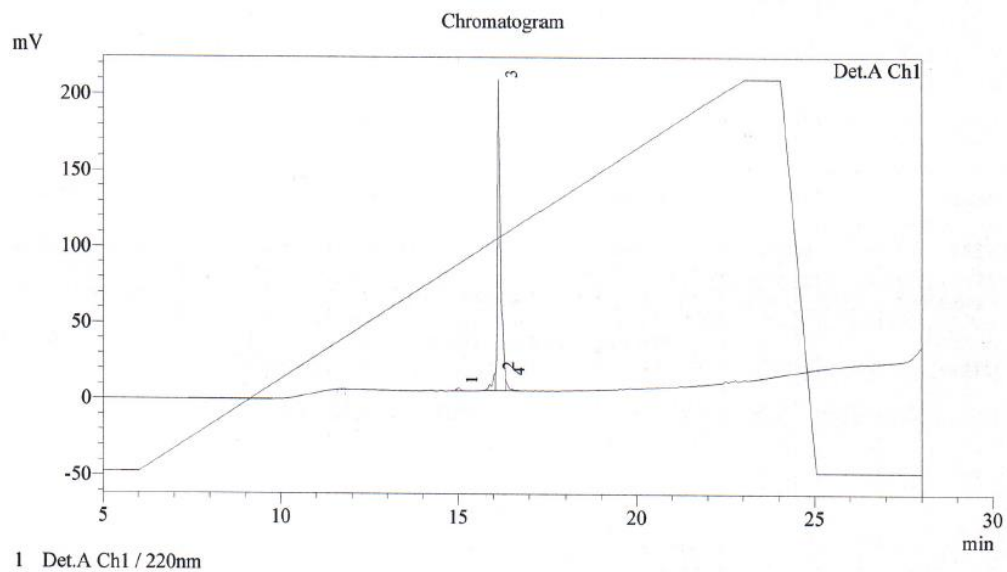
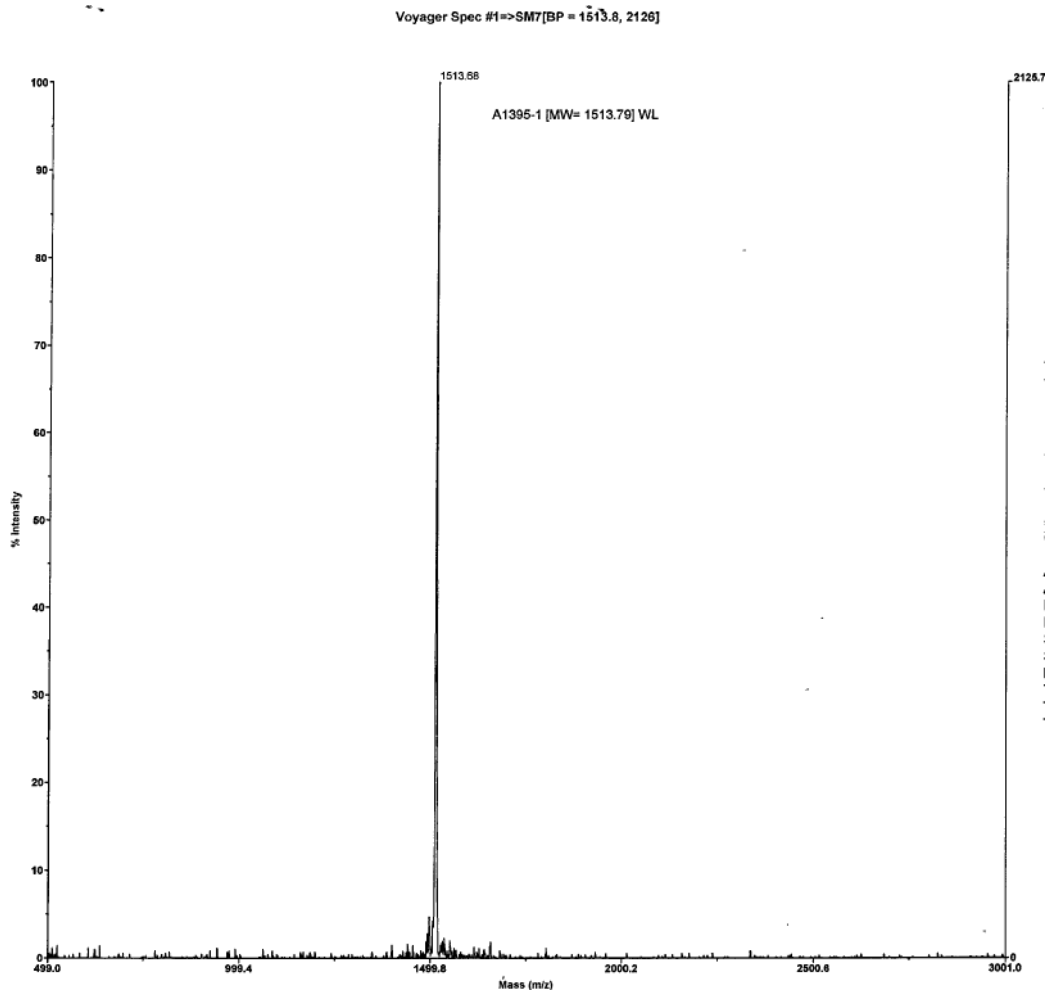
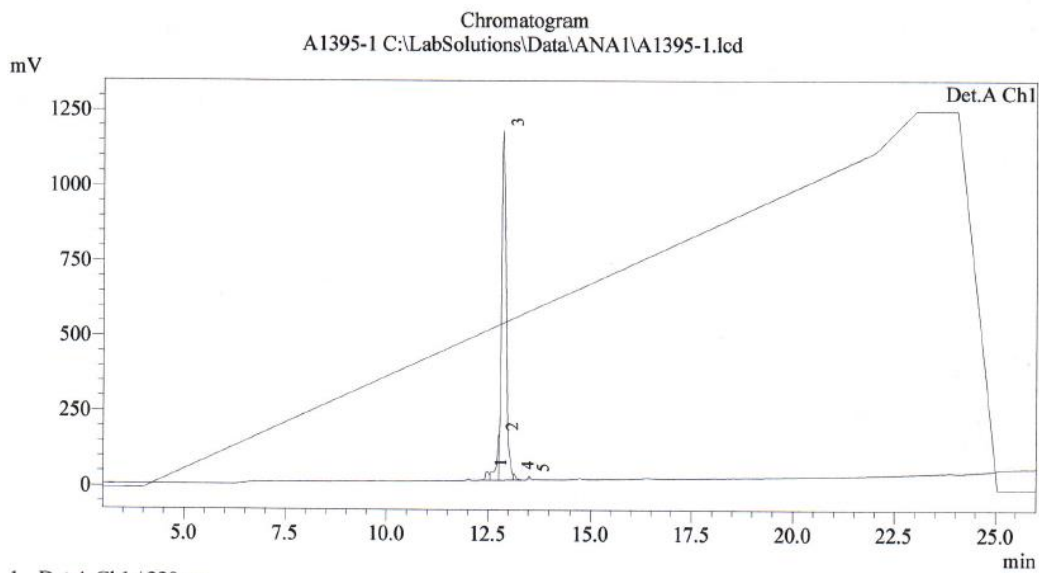


sEntV

Column: 250X4.6mm 5u C18 120A
Solvent: A:0.05%TFA in Water; B: 0.05 % TFA in ACN
ID :

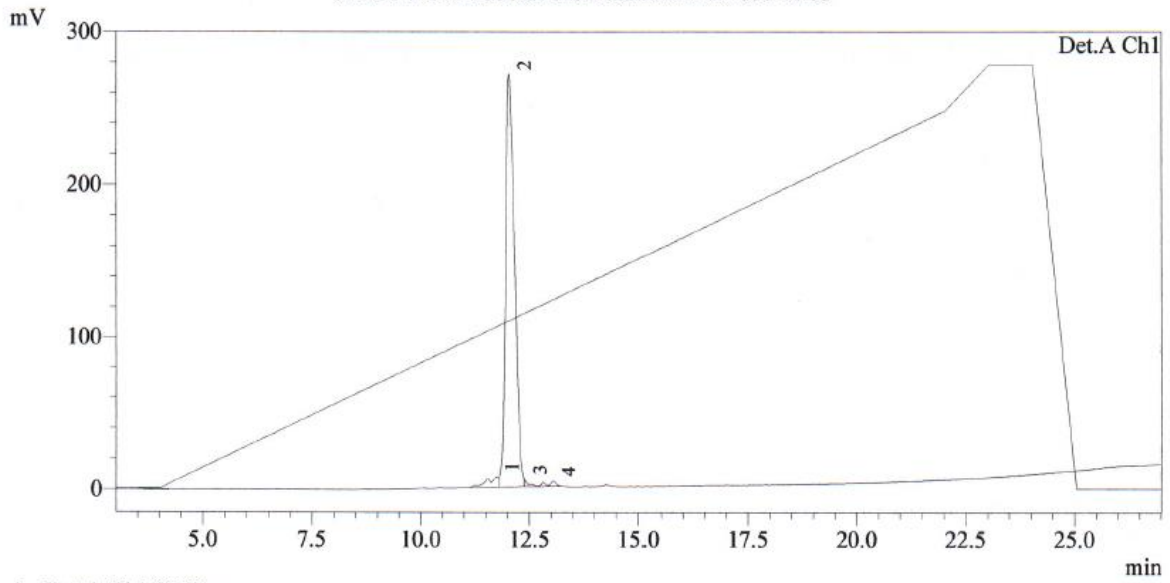


α4



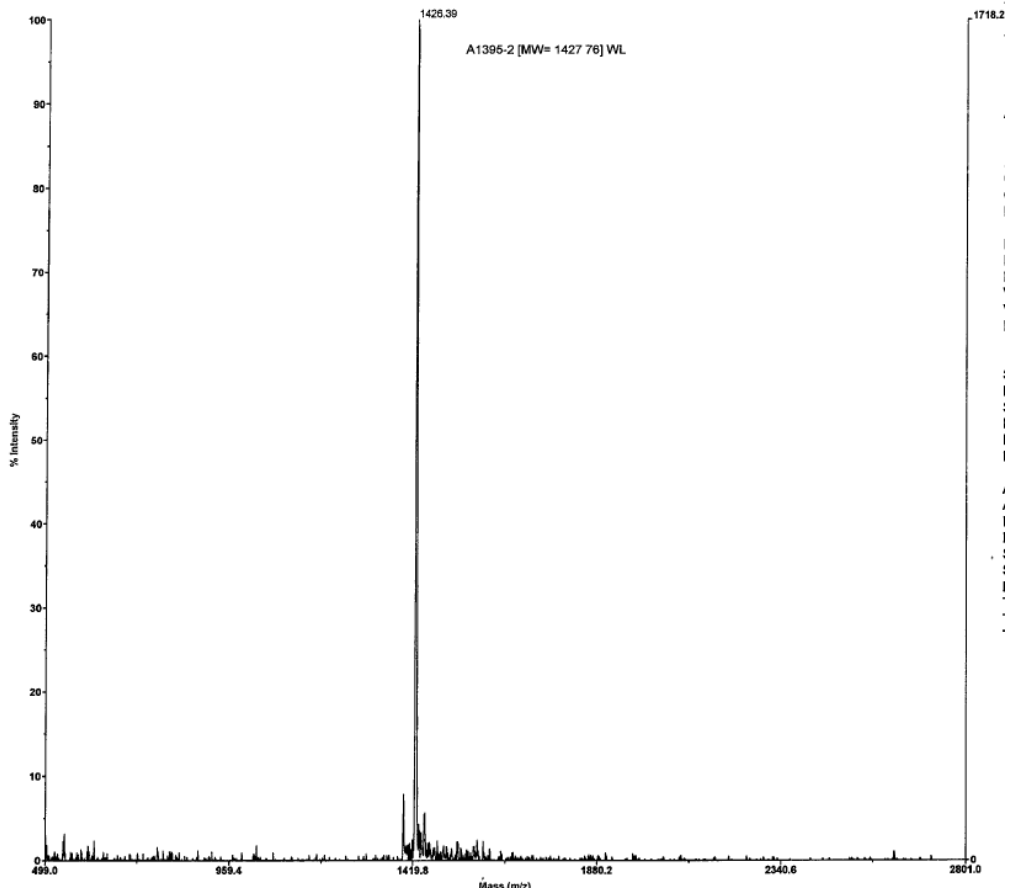
α5

Chromatogram
A1395-2 C:\LabSolutions\Data\ANA1\A1395-2.lcd



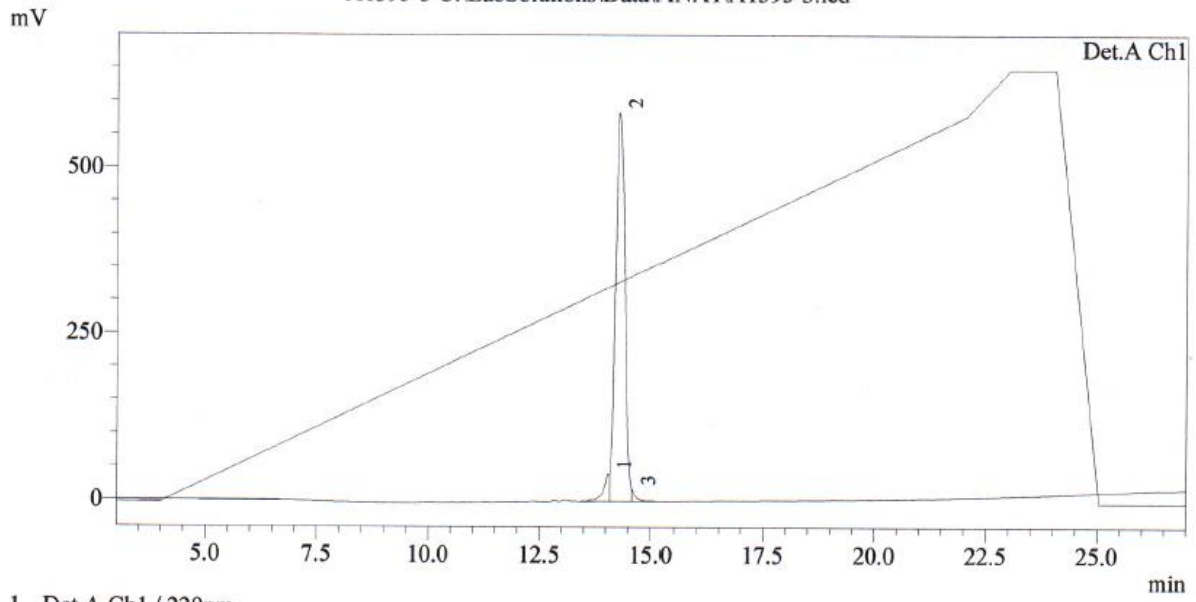
1 Det.A Ch1 / 220nm

Voyager Spec #1=>SM7[BP = 1426.2, 1718]

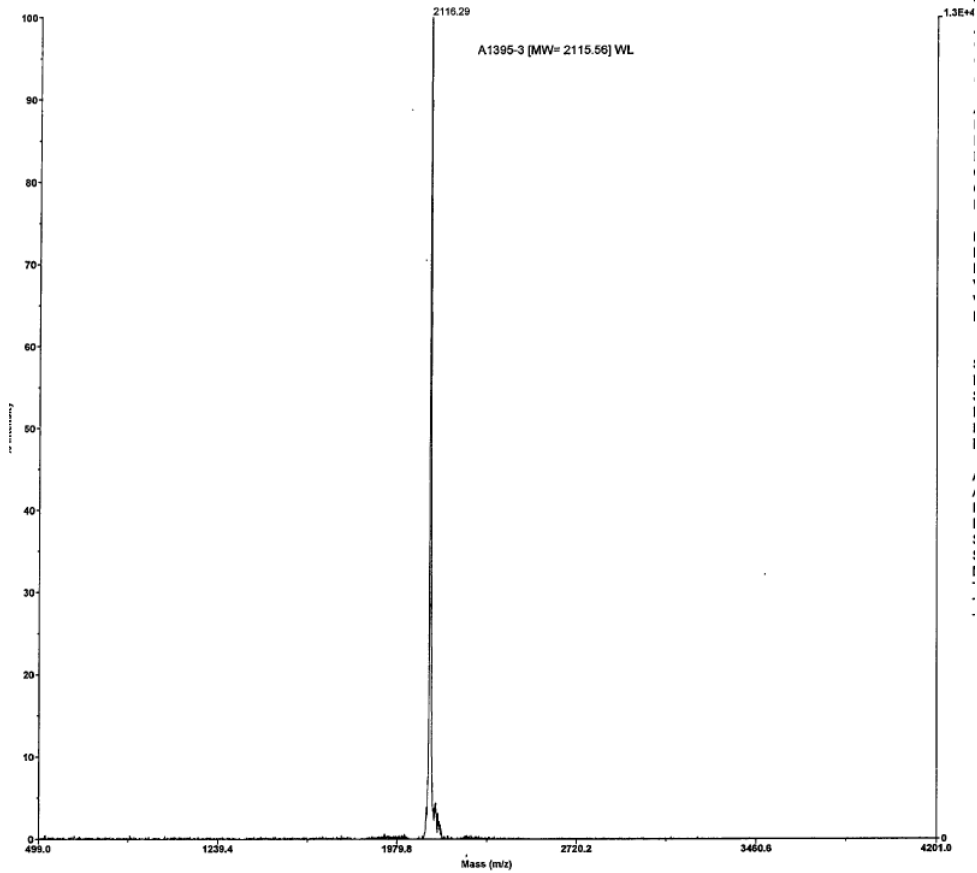


α6

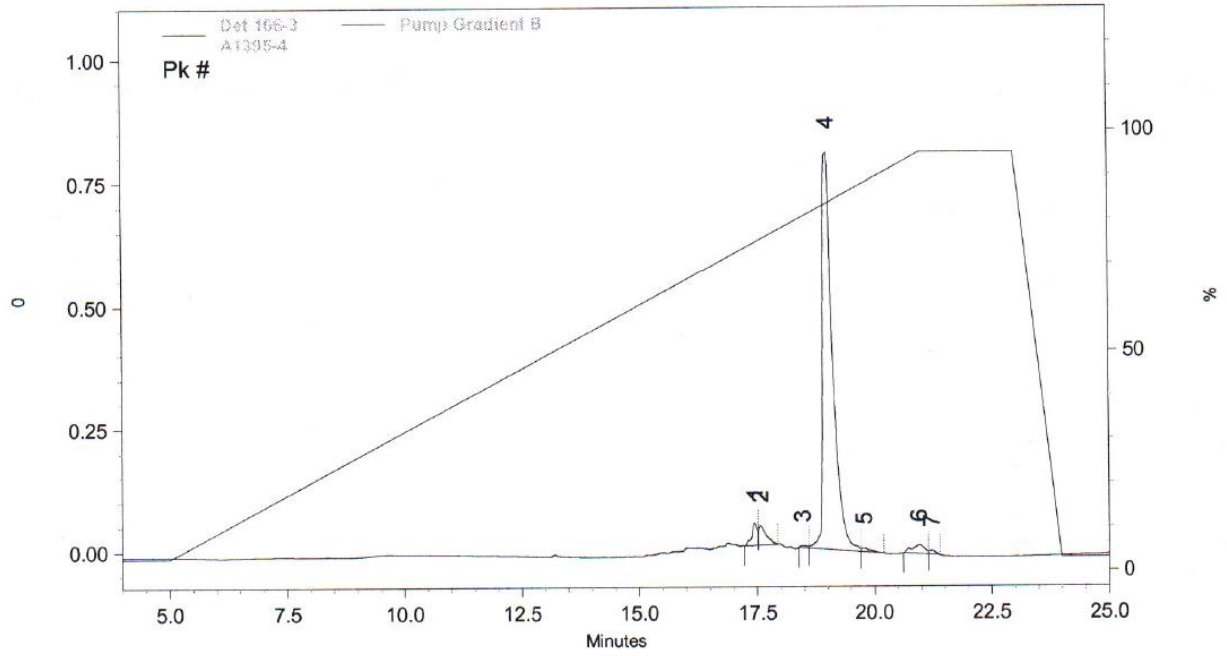
Chromatogram
A1395-3 C:\LabSolutions\Data\ANA1\A1395-3.lcd



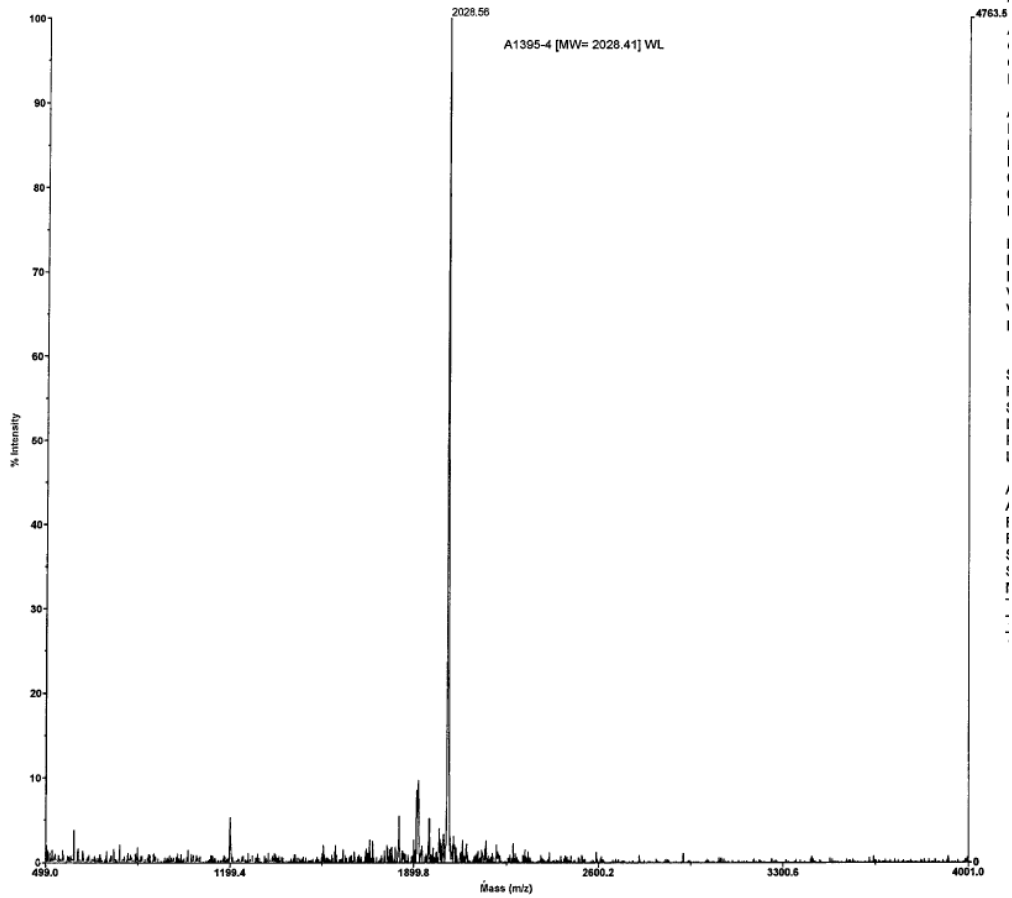
Voyager Spec #1=>SM5=>AdvBC(32,0.5,0.1)[BP = 2116.0, 13009]



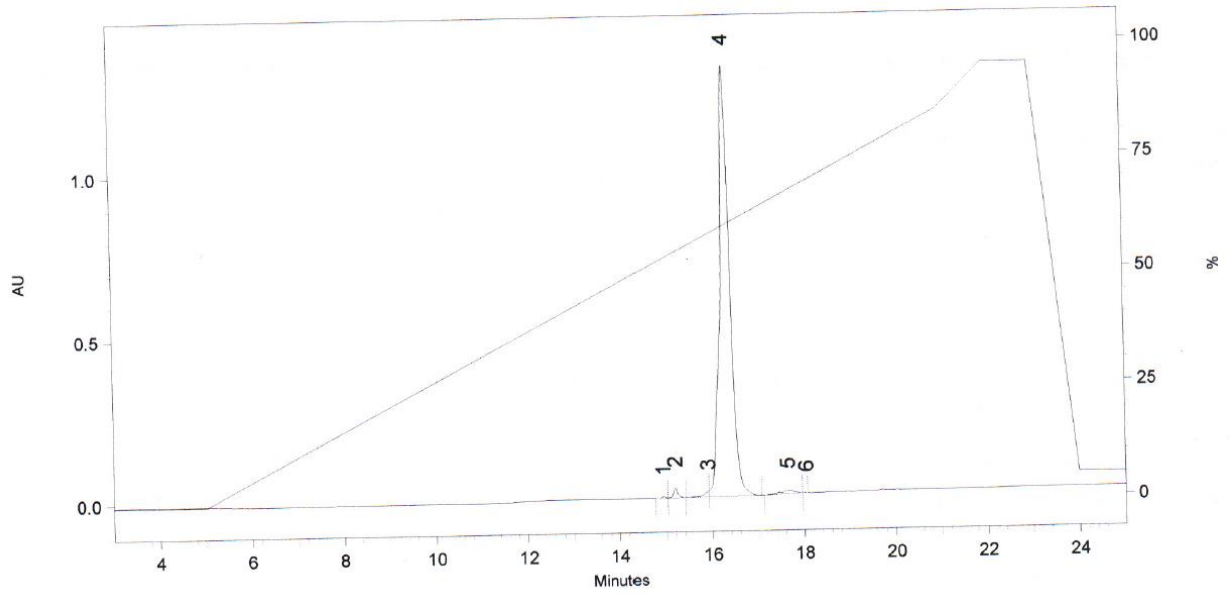
α7



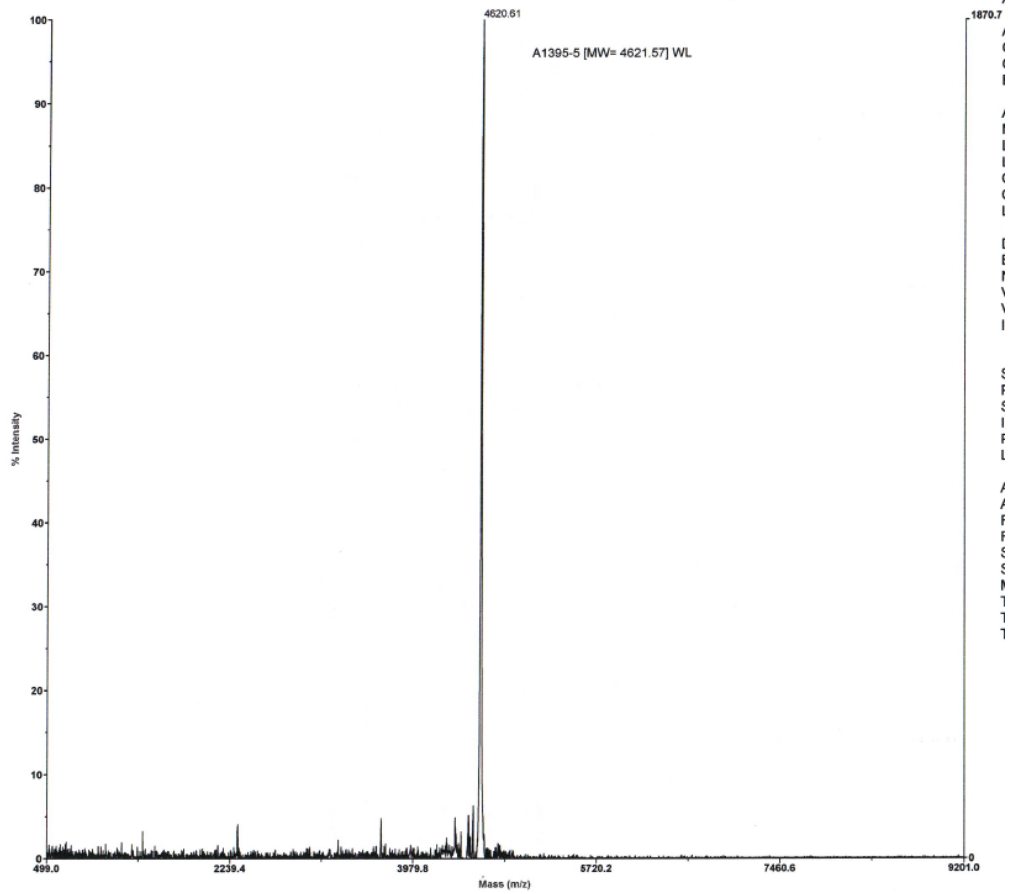
Voyager Spec #1=>SM5=>AdvBC(32,0.5,0.1)[BP = 2028.5, 4763]



α4-6

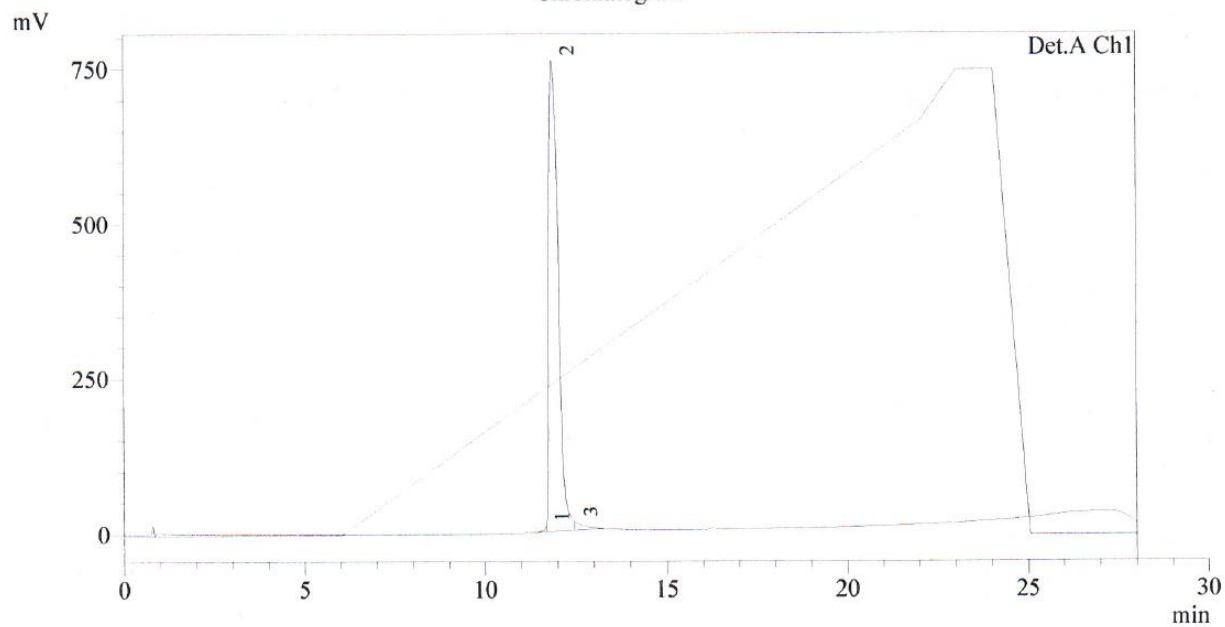


Voyager Spec #1=>SMS=>AdvBC(32.0.5,0.1)[BP = 4621.5, 1871]



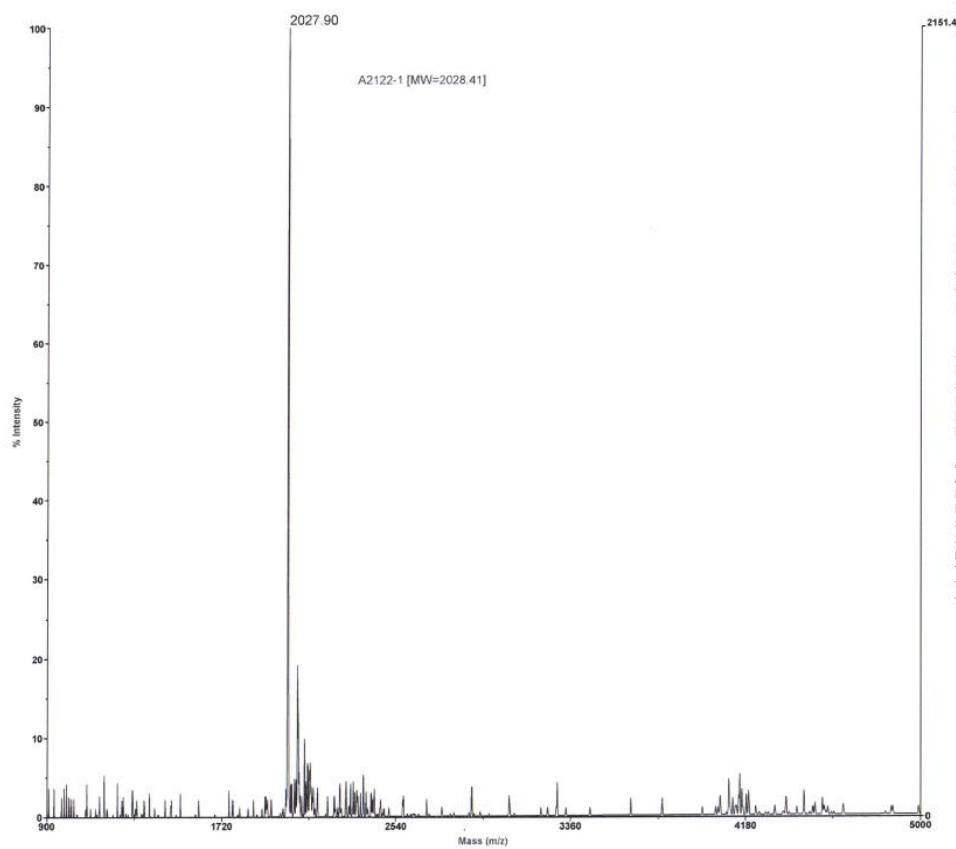
α 7-random

Chromatogram



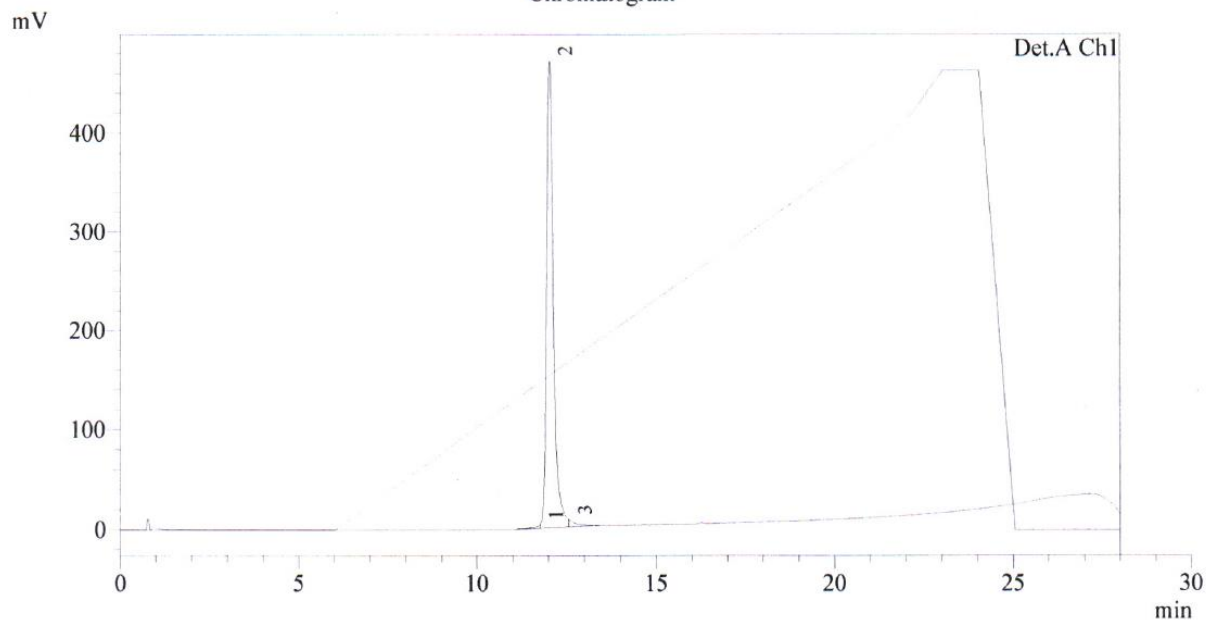
1 Det.A Ch1 / 220nm

Voyager Spec #1=>BC=>NF1.0=>SM7[BP = 2028.0, 2151]



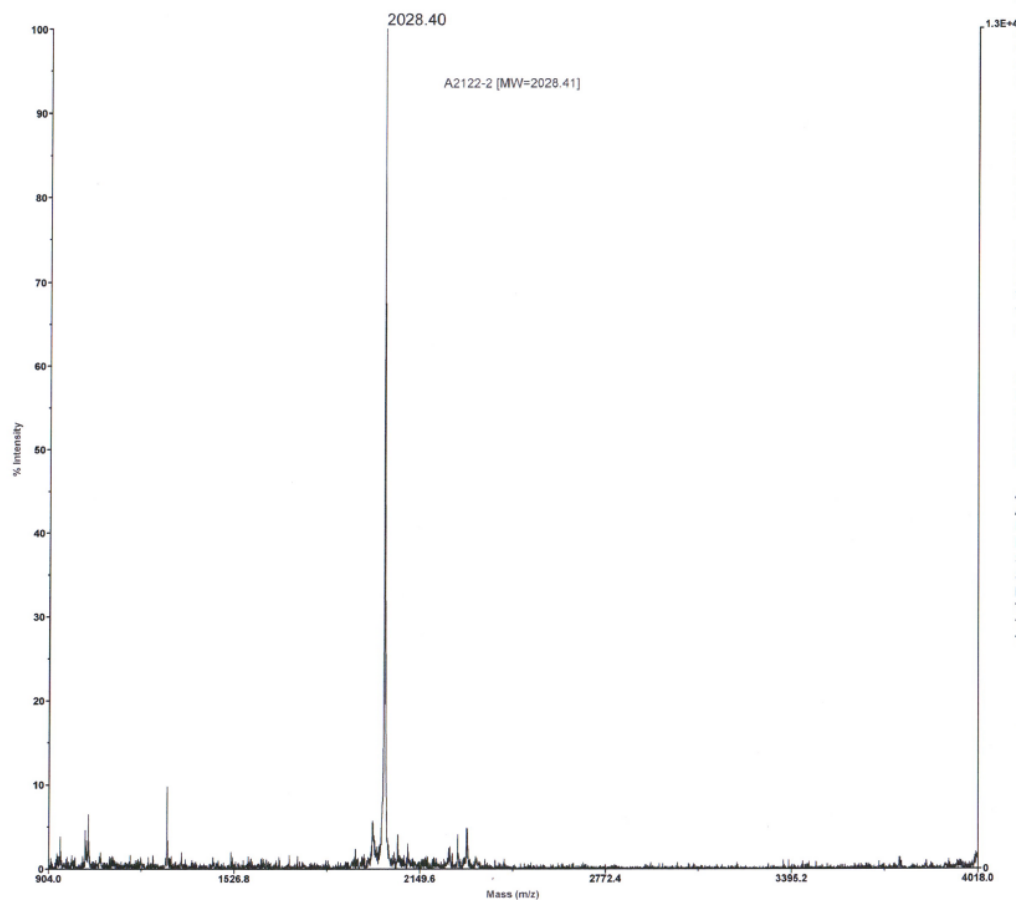
$\alpha 7$ -disrupted

Chromatogram



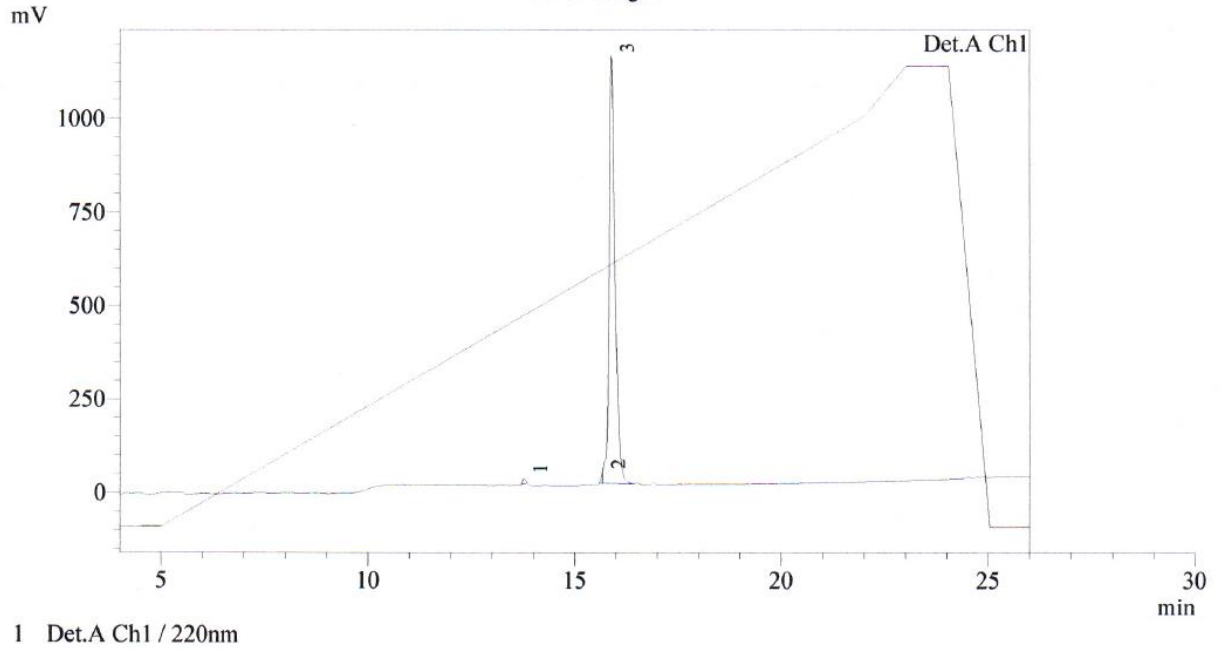
I Det.A Ch1 / 220nm

Voyager Spec #1[BP = 2028.5, 12960]

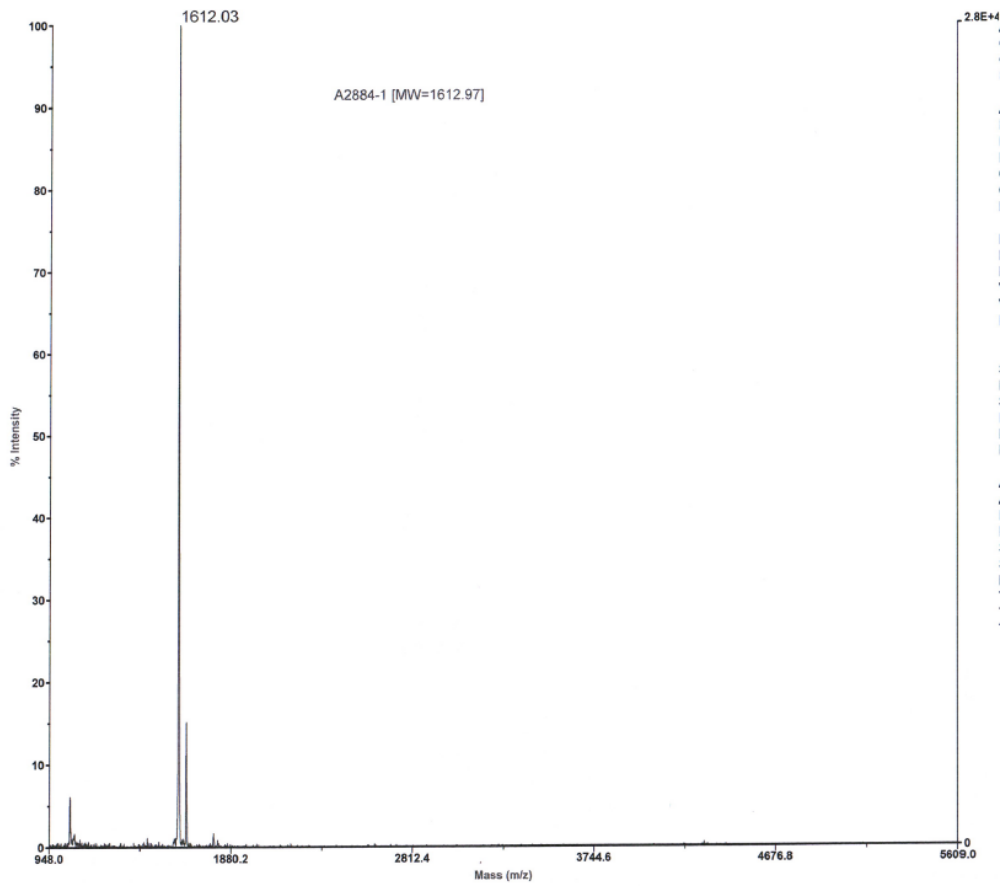


16aa

Chromatogram

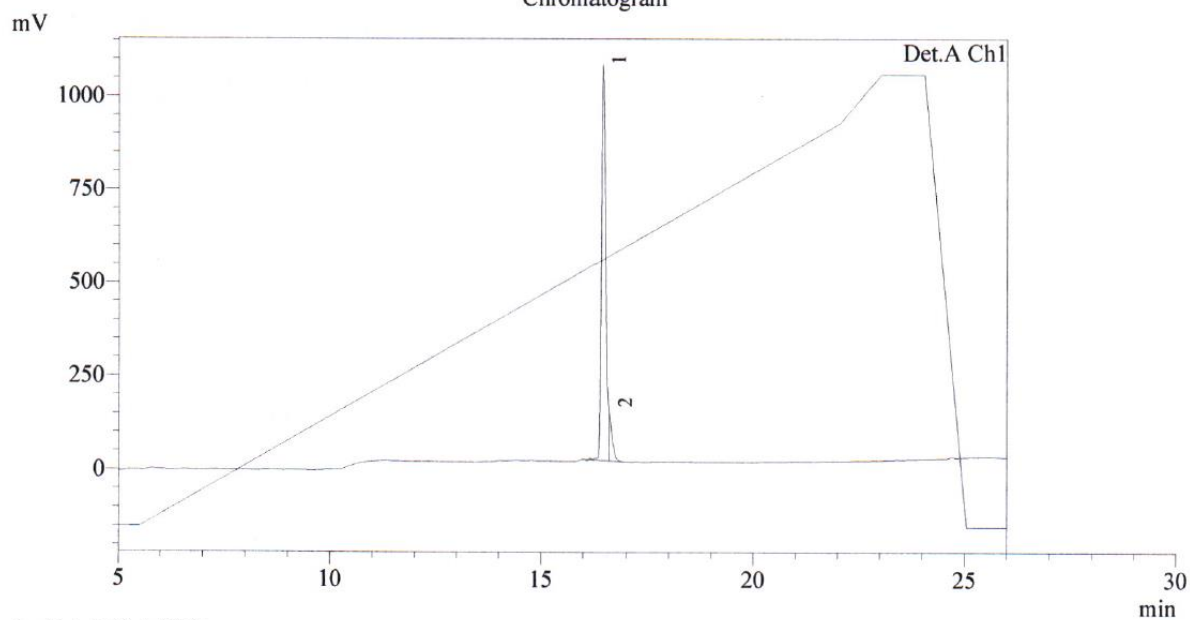


Voyager Spec #1=>SM7[BP = 1611.5, 28165]



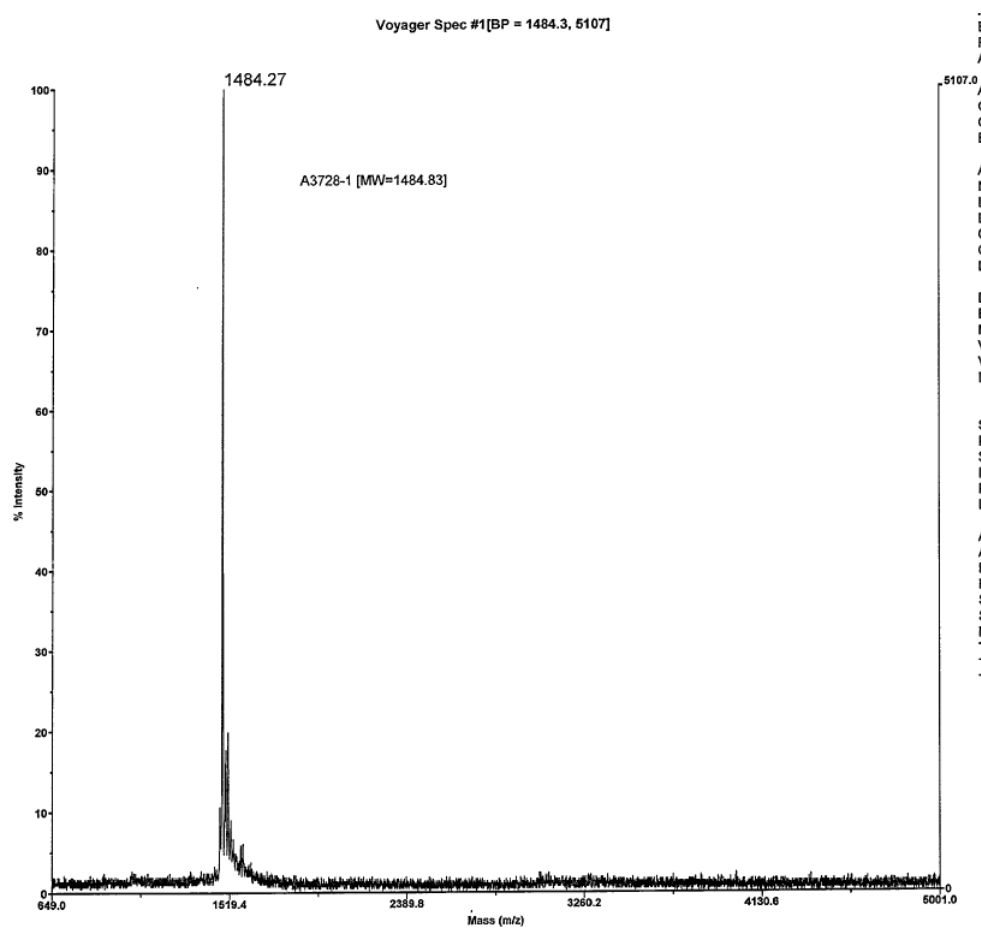
14aa-I

Chromatogram



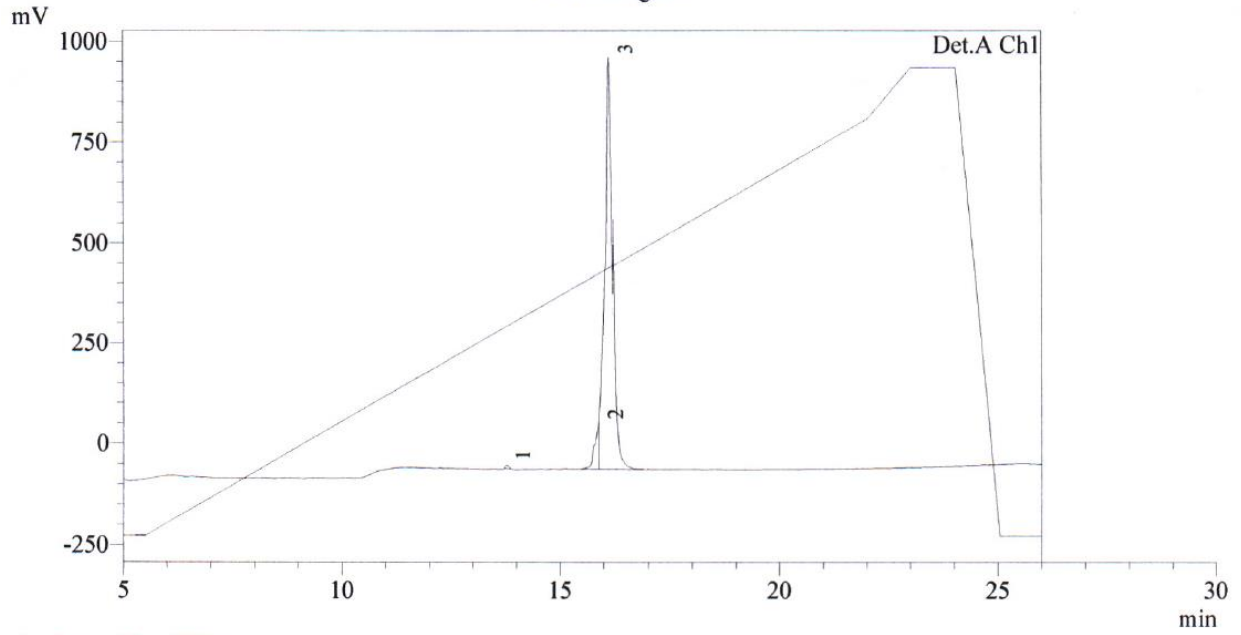
1 Det.A Ch1 / 220nm

Voyager Spec #1[BP = 1484.3, 5107]



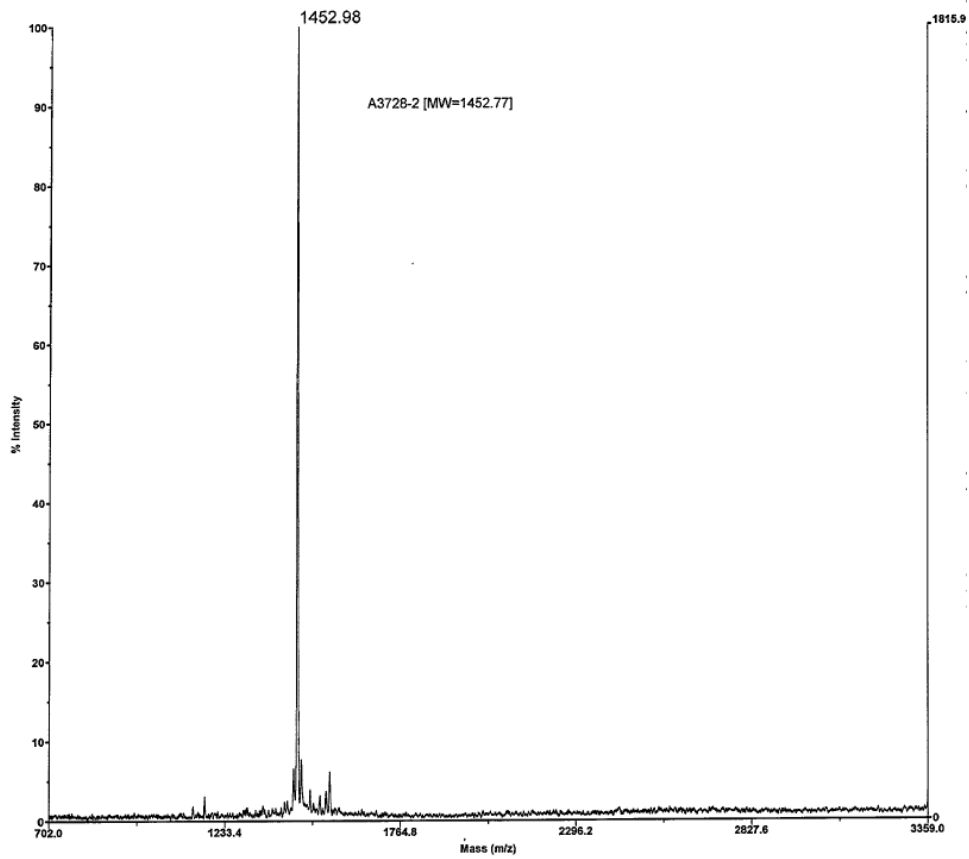
14aa-II

Chromatogram



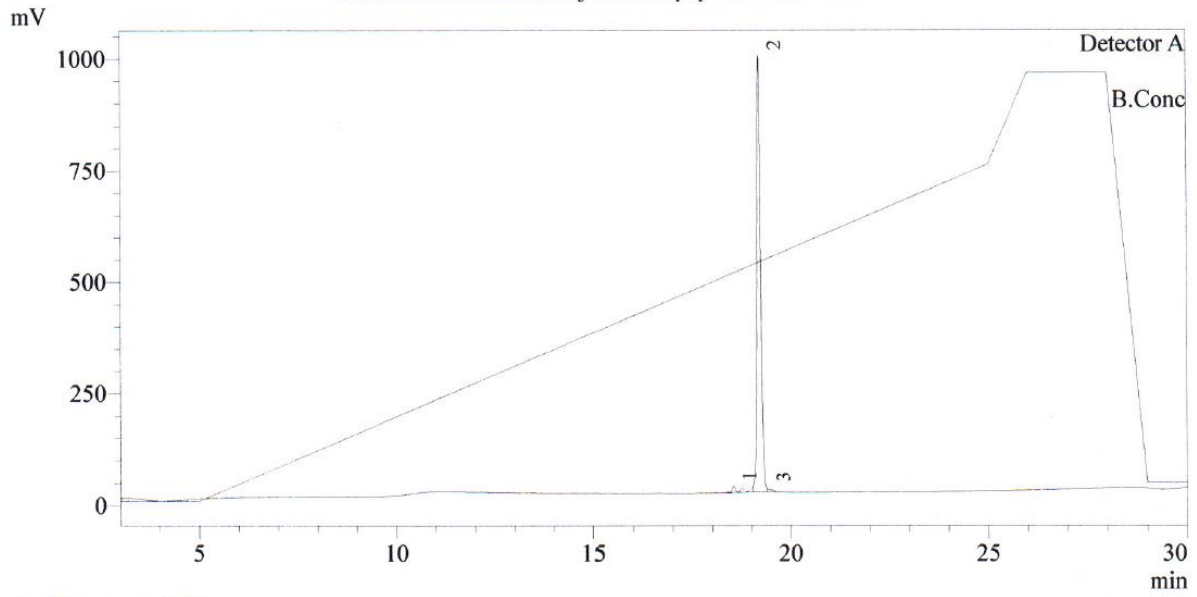
1 Det.A Ch1 / 220nm

Voyager Spec #1=>BC=>SM13[BP = 1452.9, 1816]



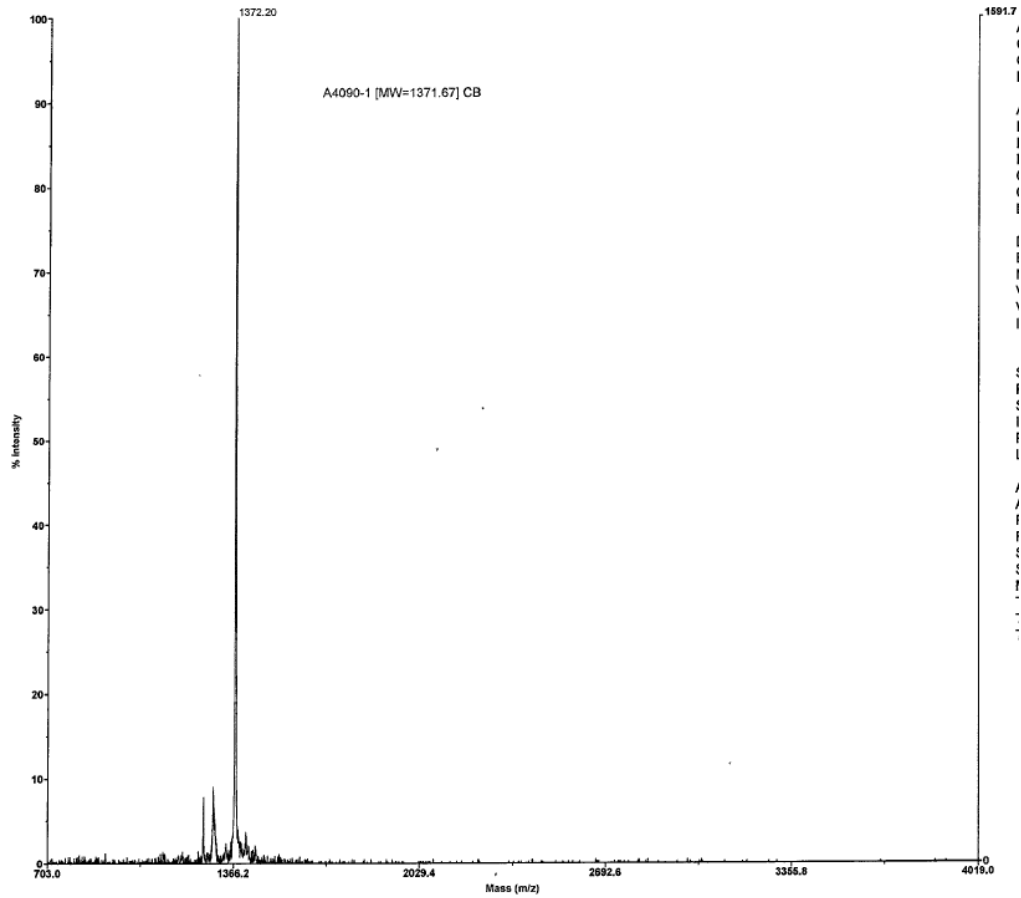
13aa

Chromatogram
C:\LabSolutions\Data\Project I\Anapep24\A4090-1.lcd



1 Detector A / 220nm

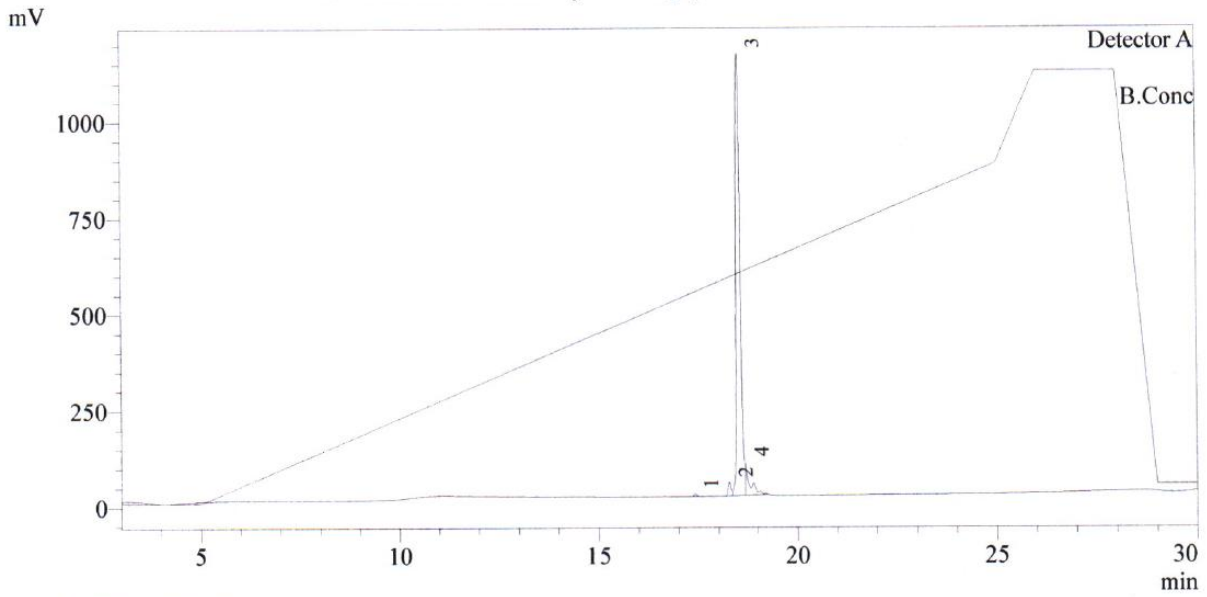
Voyager Spec #1=>SM5[BP = 1371.9, 1592]



12aa

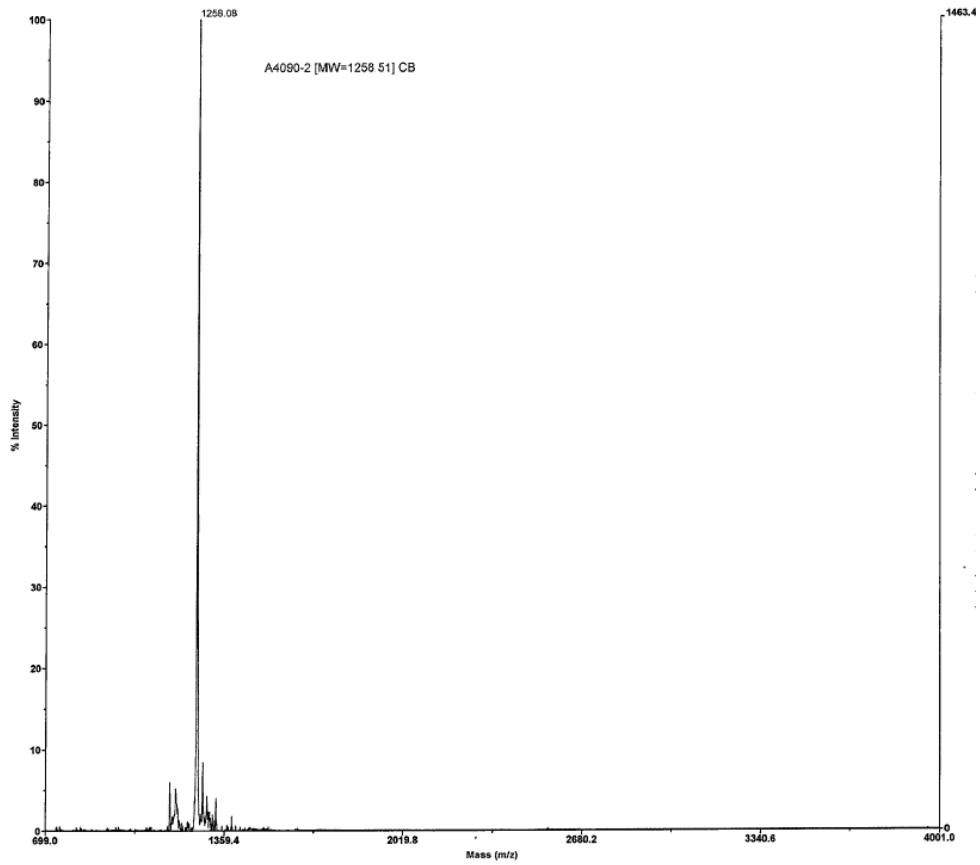
Chromatogram

C:\LabSolutions\Data\Project1\Anapep24\A4090-2A.lcd



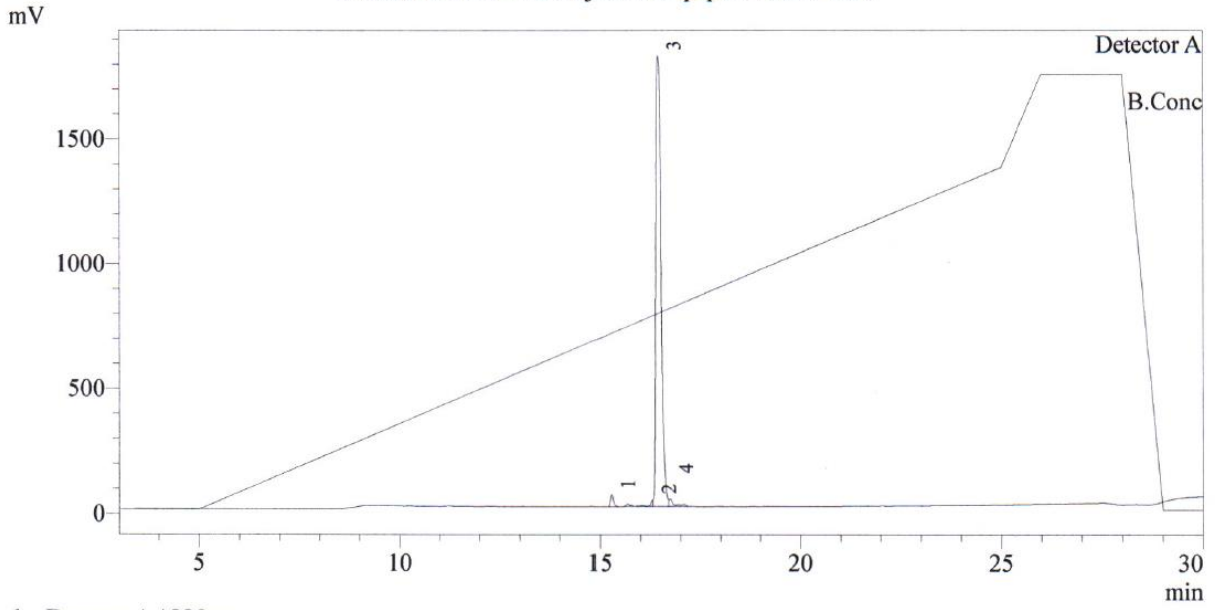
1 Detector A / 220nm

Voyager Spec #1=>SMS=>NR(2.00)>AdvBC(32.0.5.0.1)[BP = 1258.0, 1463]

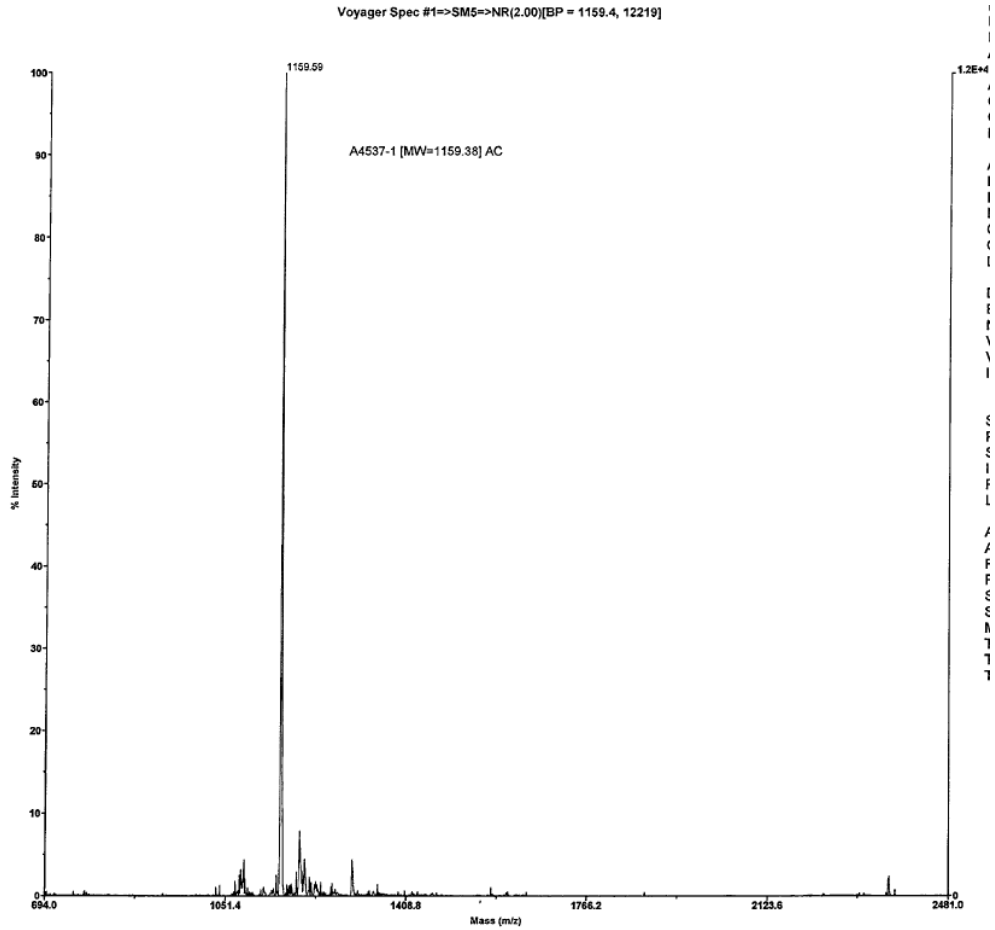


11aa

Chromatogram
C:\LabSolutions\Data\Project1\Anapep25\A4537-1.lcd

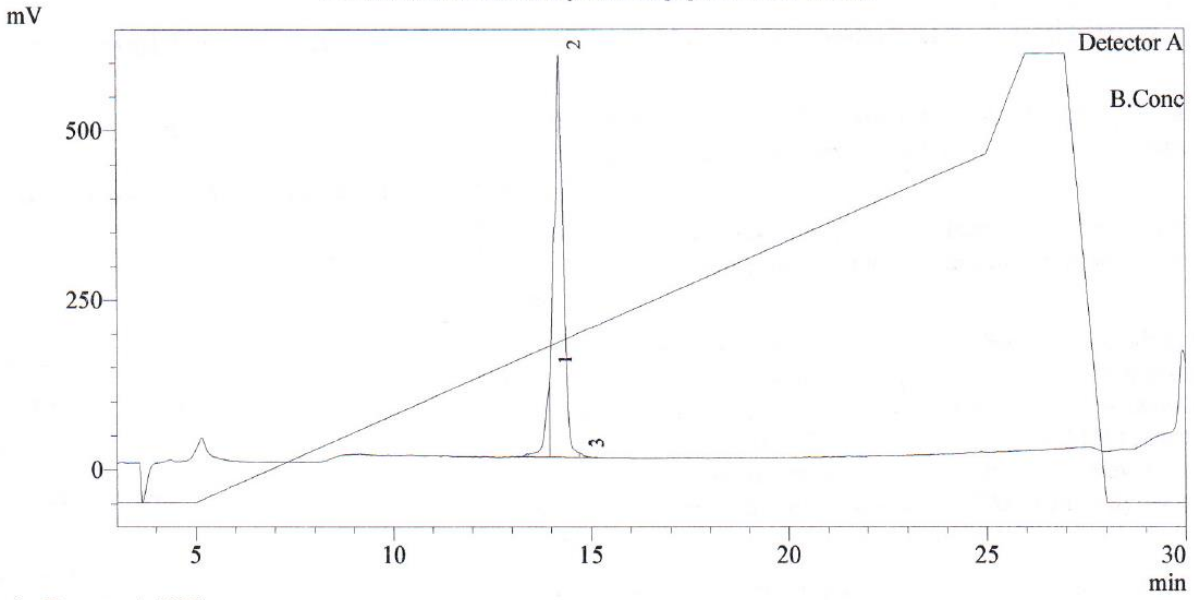


1 Detector A / 220nm

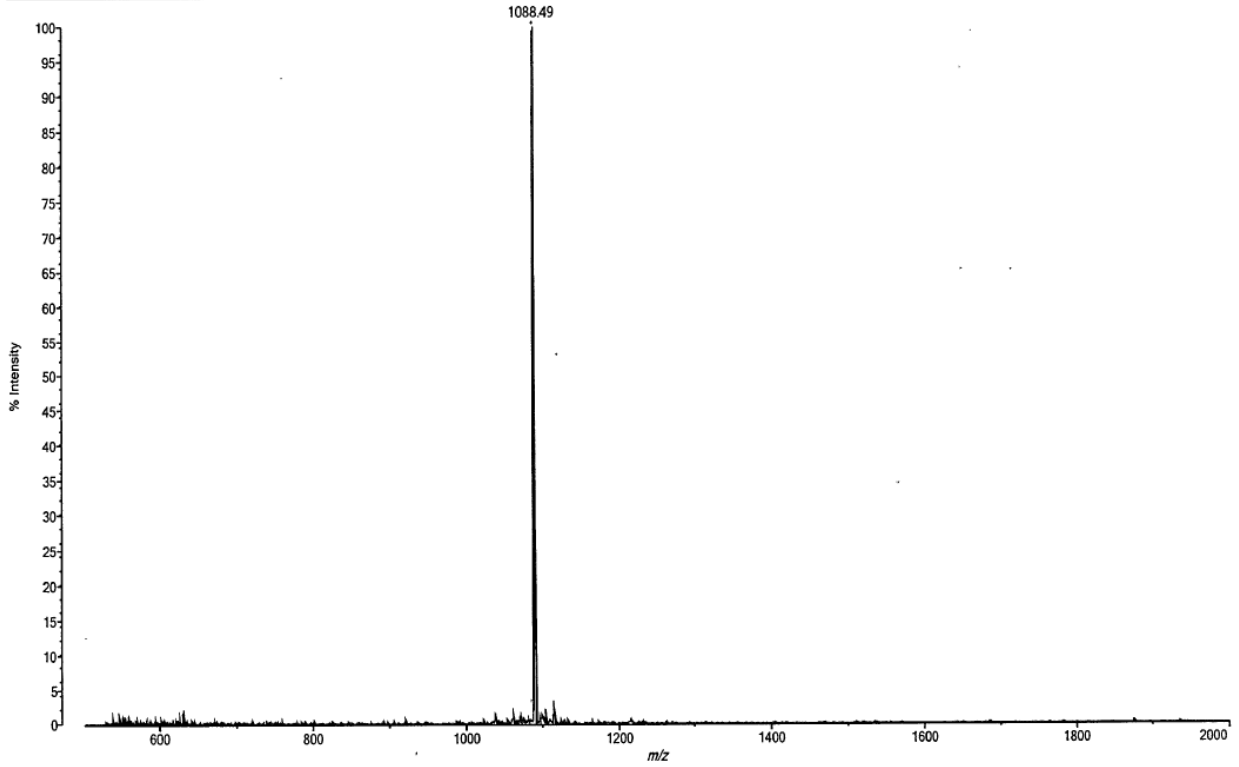


10aa

Chromatogram
C:\LabSolutions\Data\Project1\Anapep25\A4950-1B.lcd



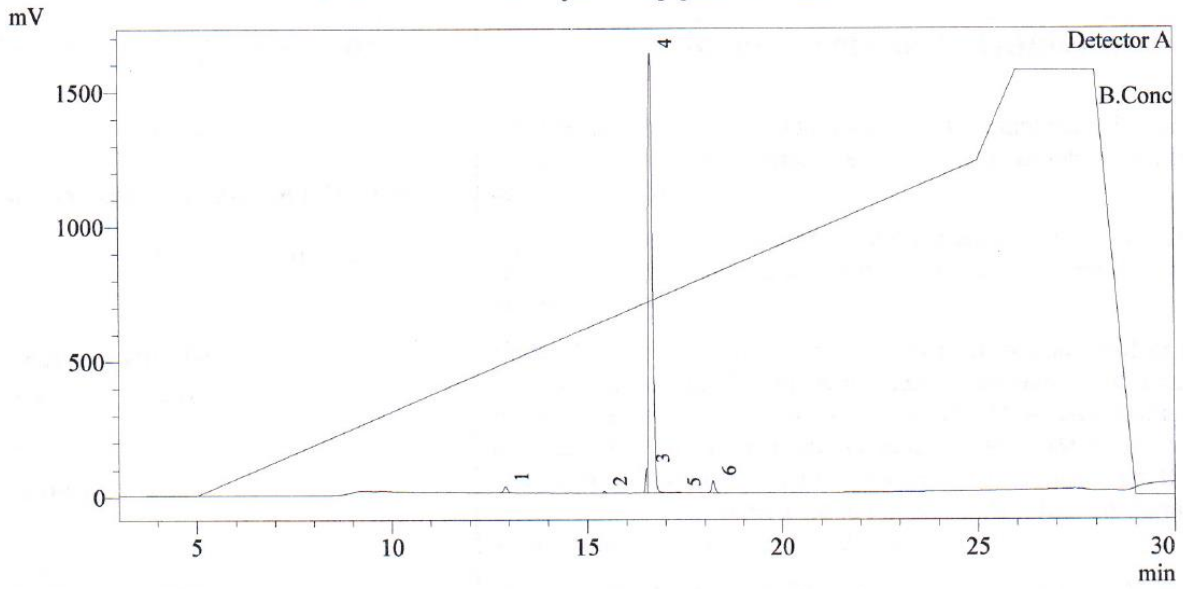
Data: A4950-1 [MW=1088.30] AC_0001:B4 27 August 2020 11:05:55 Cal:Custom Calibration by MALDI Solutions Admin on 27 August 2020 11:08:02
Shimadzu MALDI-8020: Tuning Linear, Power 25, P.Ext at 2605.00 (bin 120)
Processed data (averaged) : 2.1 mV [sum=104.2 mV], Smoothed = 15, profiles # 1 - 50



9aa

Chromatogram

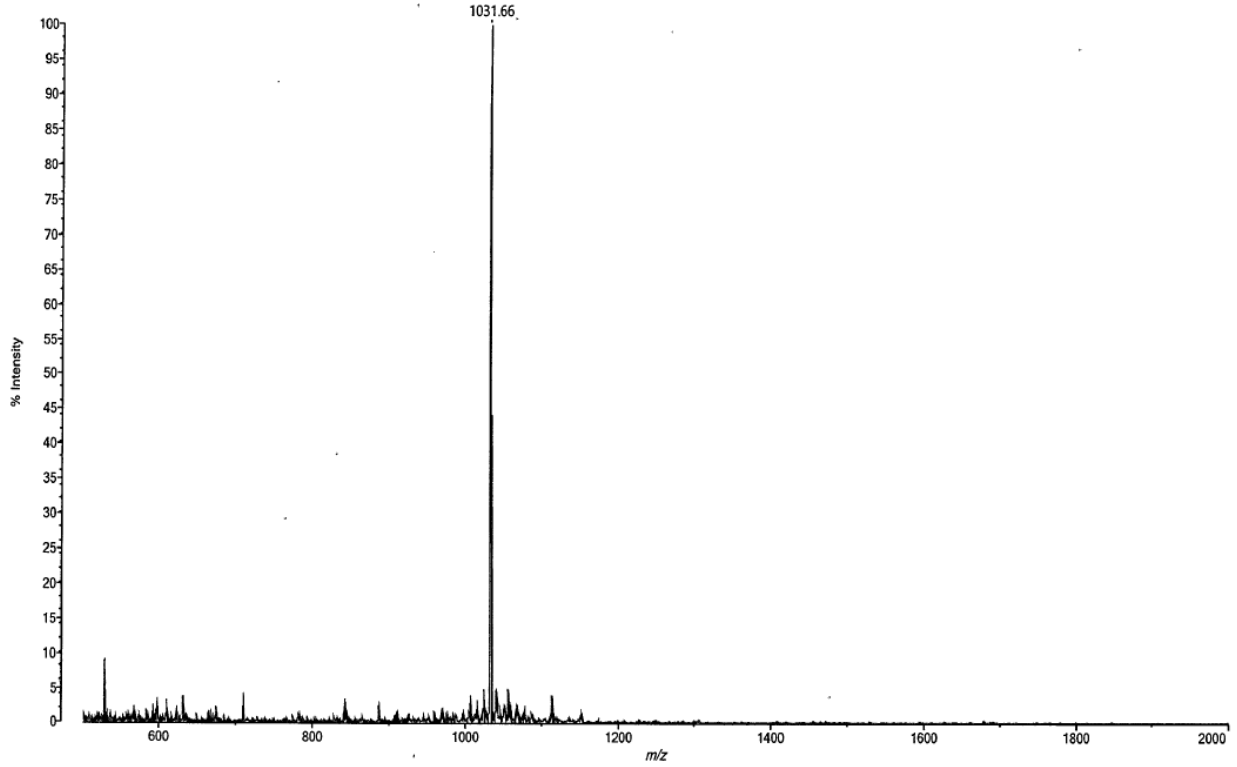
C:\LabSolutions\Data\Project1\Anapep25\A4950-2A.lcd



1 Detector A / 220nm

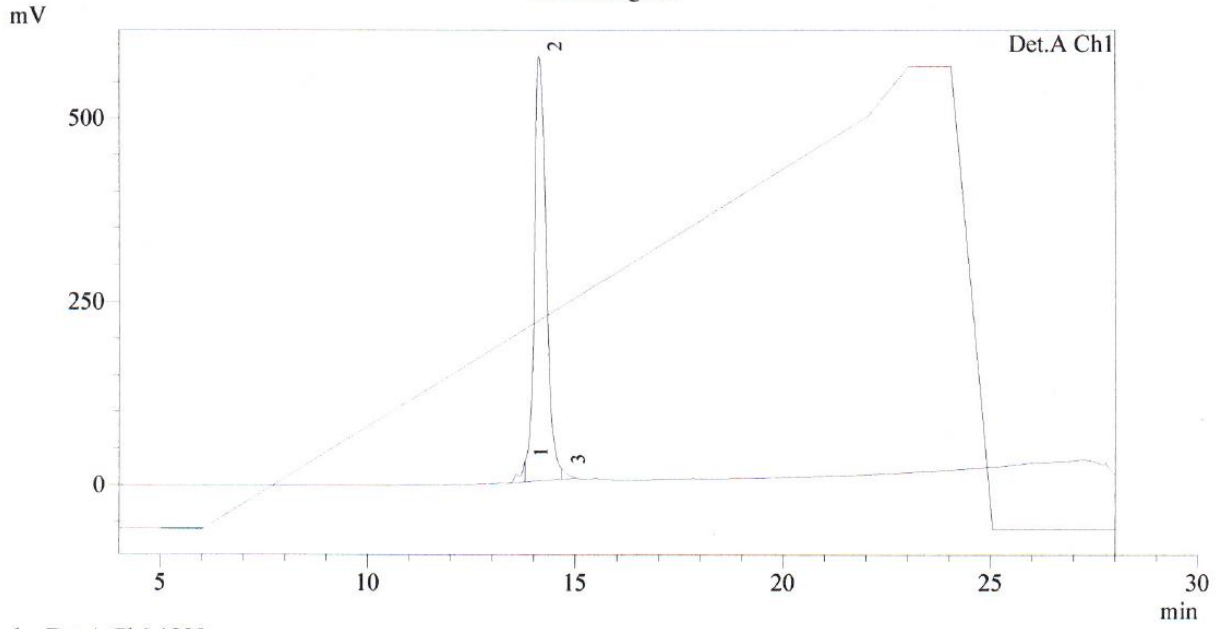
Data: A4950-2 [MW=1031.25] AC_0001:A4 27 August 2020 11:05:55 Cal:Custom Calibration by MALDI Solutions Admin on 27 August 2020 11:09:47
Shimadzu MALDI-8020: Tuning Linear, Power 25, P.Ext at 2605.00 (bin 120)

Processed data (averaged): 2.9 mV [sum=142.9 mV], Smoothed = 15, profiles # 1 - 50

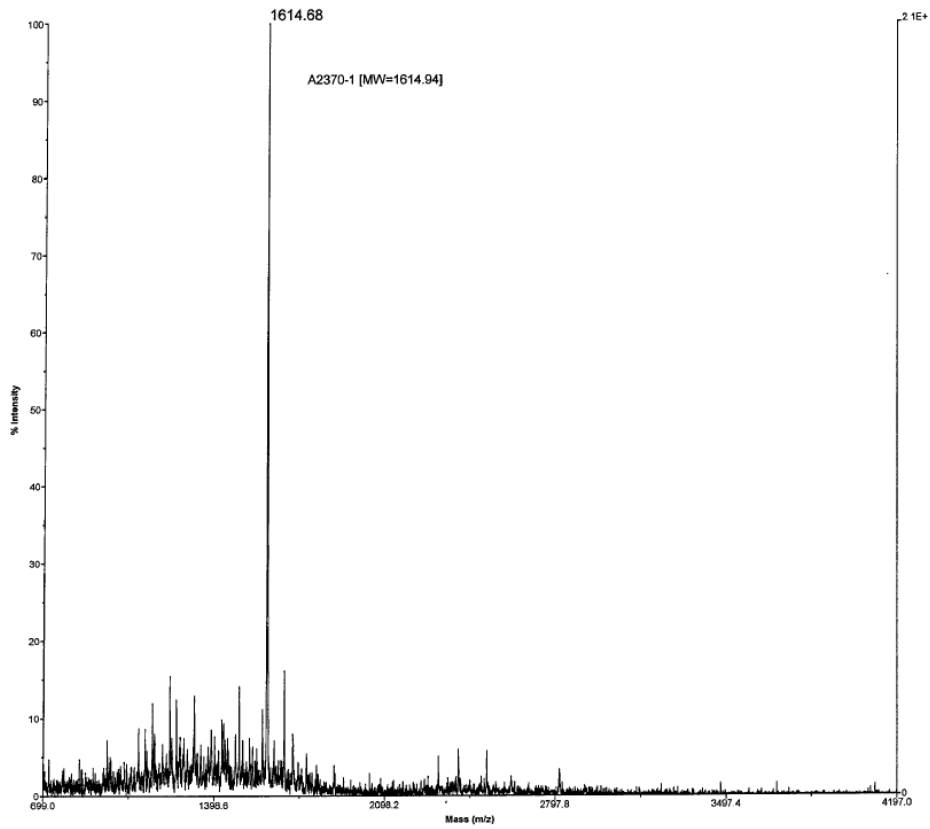


α 7-EE

Chromatogram

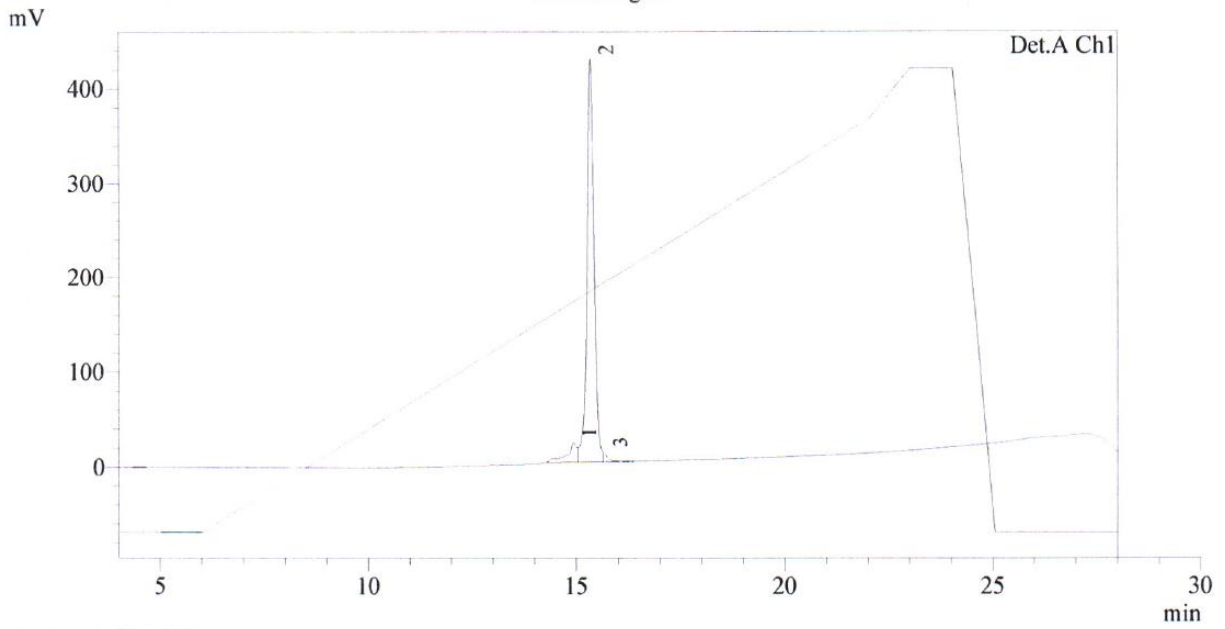


Voyager Spec #1[BP = 1614.6, 21013]



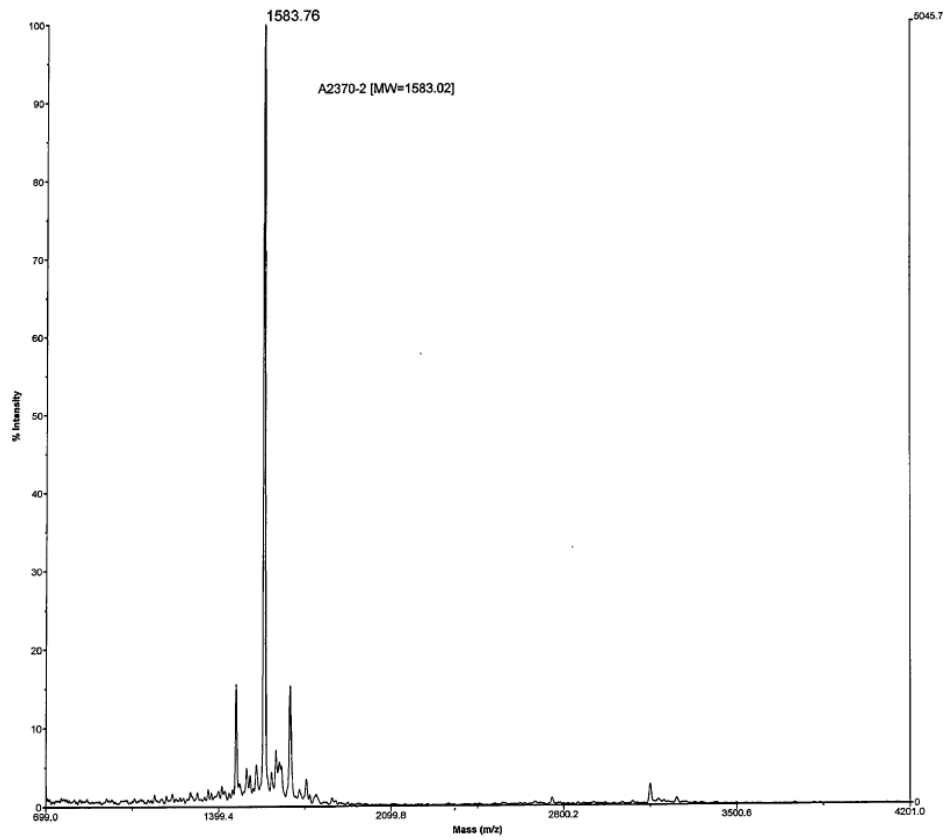
α 7-II

Chromatogram

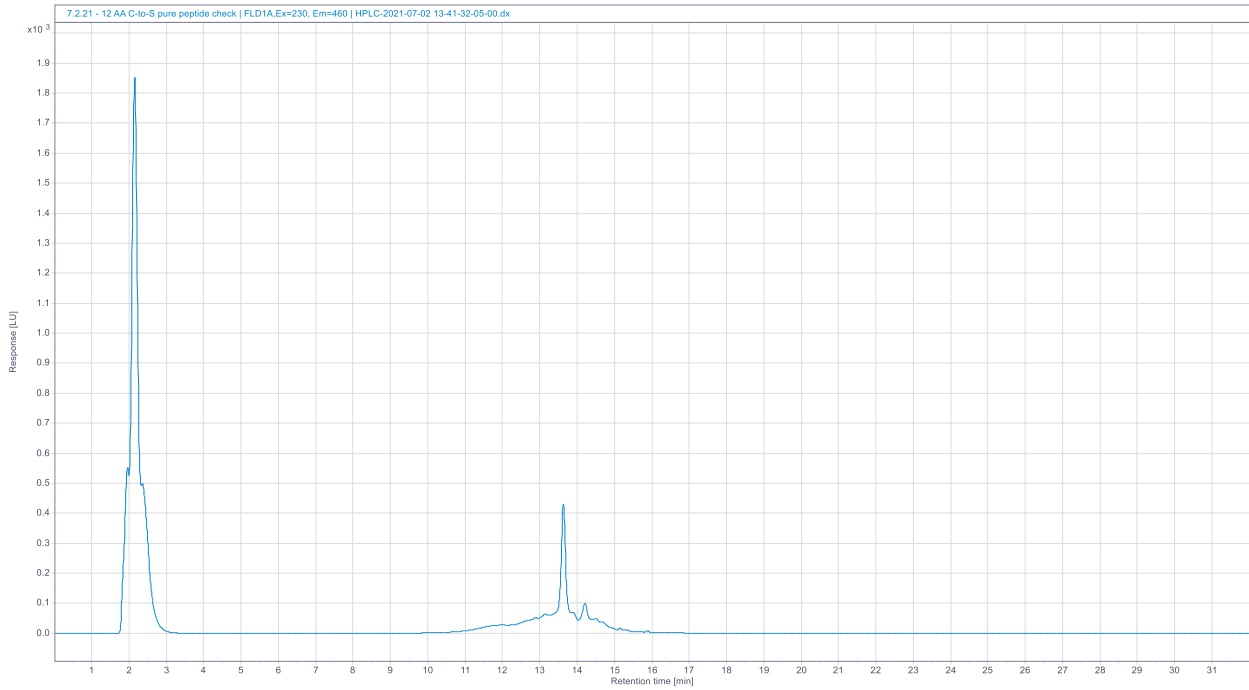


1 Det.A ChI / 220nm

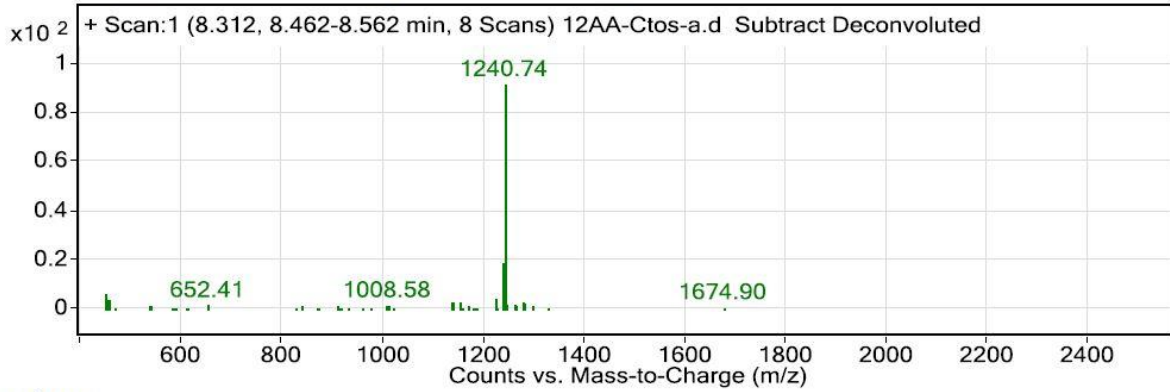
Voyager Spec #1=>NF1.0=>SM19=>SM21=>SM23[BP = 1583.6, 5046]



12aa-CtoS



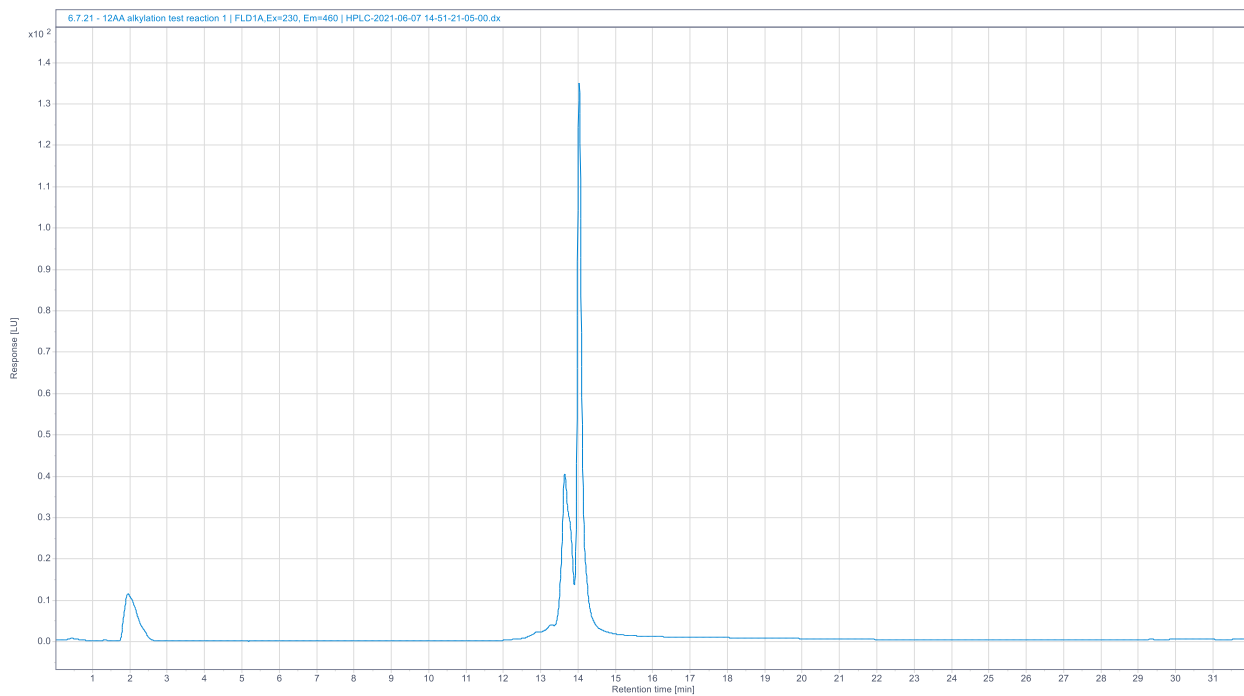
Fragmentor Voltage 175 Collision Energy 0 Ionization Mode ESI



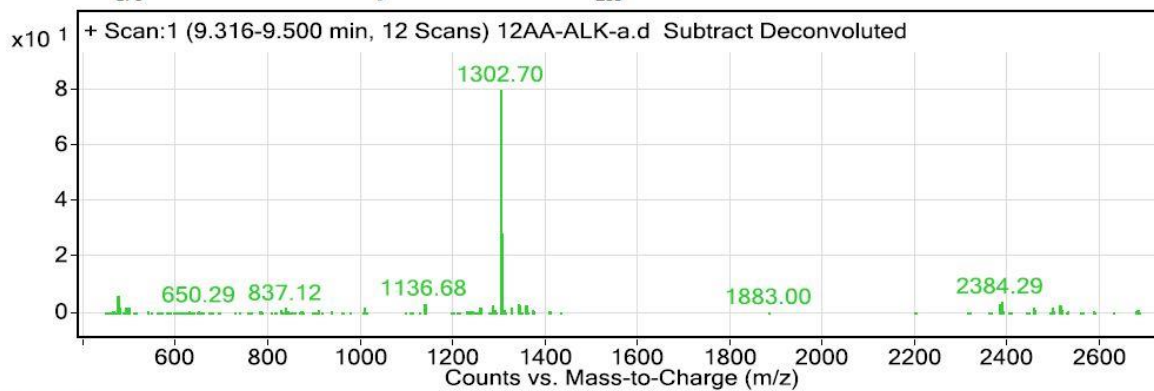
Peak List

m/z	Abund
451.22	9551.9
456.17	6375.1
1223.71	6649.6
1240.69	29821.5
1240.74	145934.6
1241.69	20043.2
1241.74	102582.2
1242.7	7643.5
1242.74	39640.6
1243.75	11235.6

12aa-ALK



Fragmentor Voltage 175
Collision Energy 0
Ionization Mode ESI



Peak List

<i>m/z</i>	Abund
476.24	3393.6
1302.65	11376.4
1302.7	43929.8
1303.66	8804.3
1303.7	31902.7
1304.66	4084.4
1304.7	15701.7
1305.7	6313.9