

Vps50

WT
primers

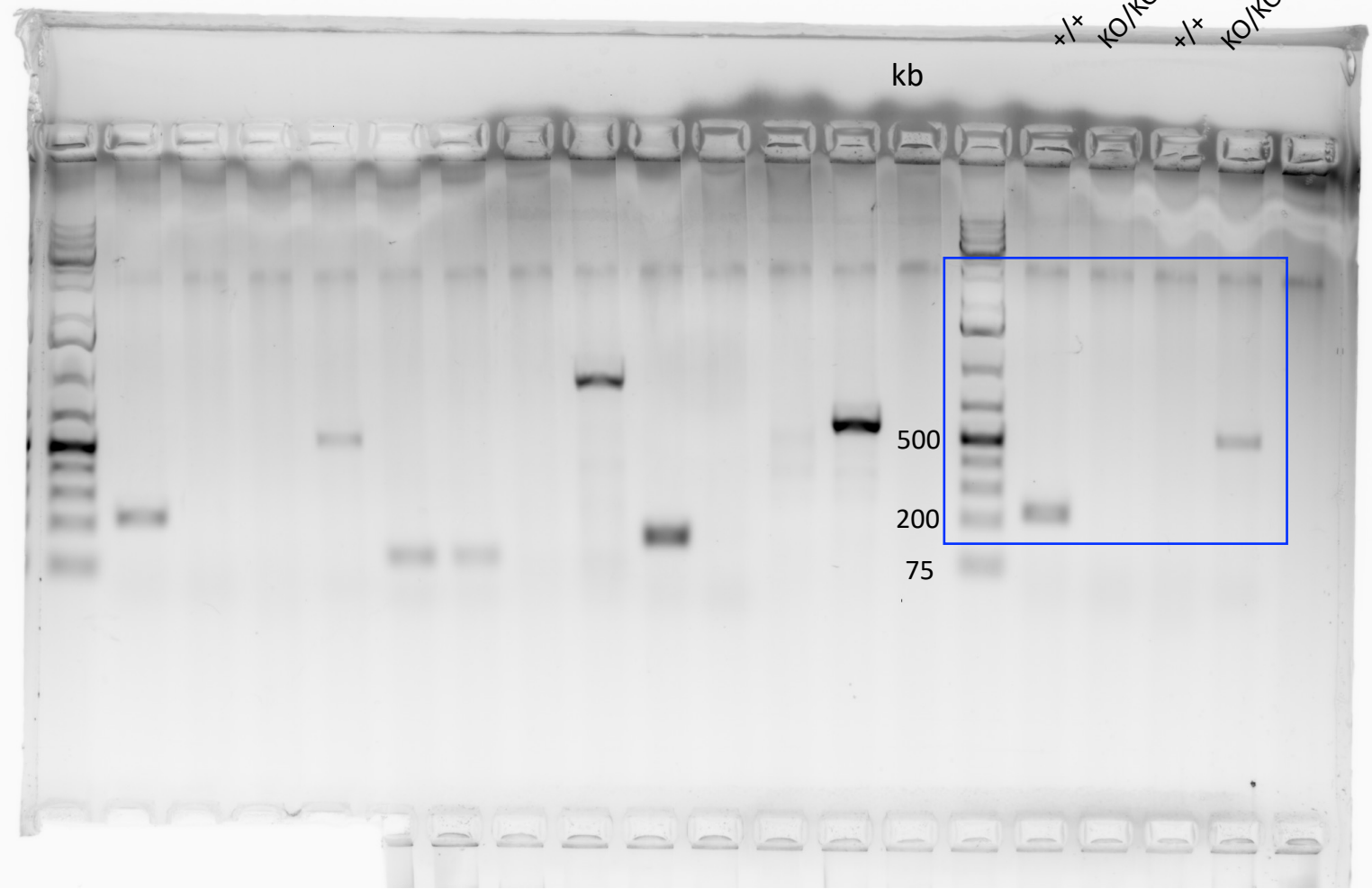
KO
primers

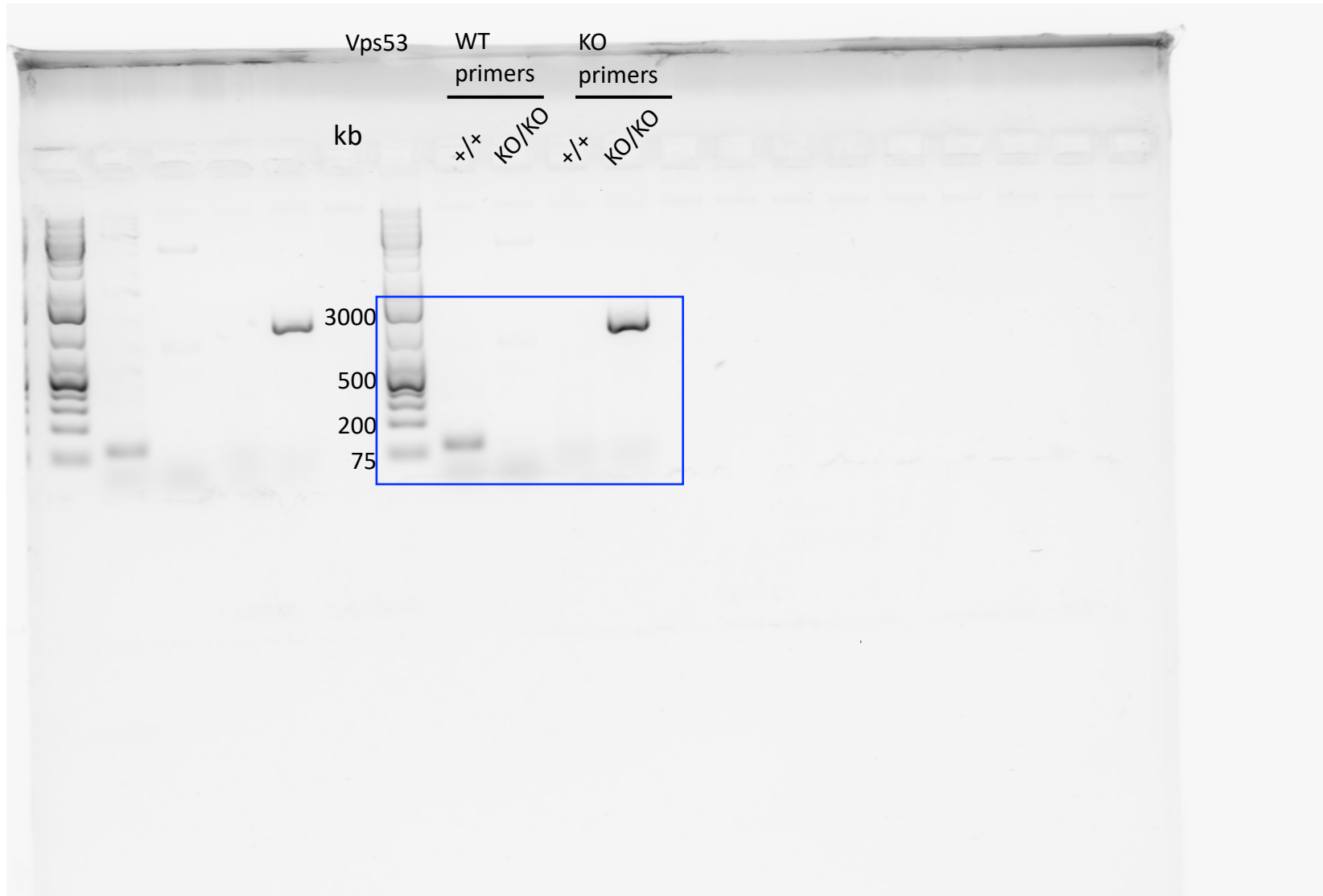
+/+ KO/KO

+/+ KO/KO

kb

500
200
75





Vps54

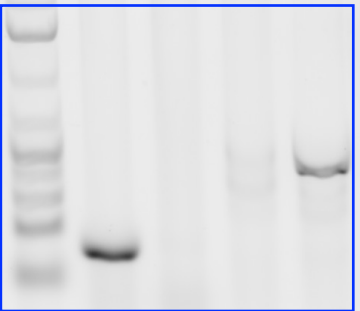
WT primers		KO primers	
+/+	KO/KO	+/+	KO/KO

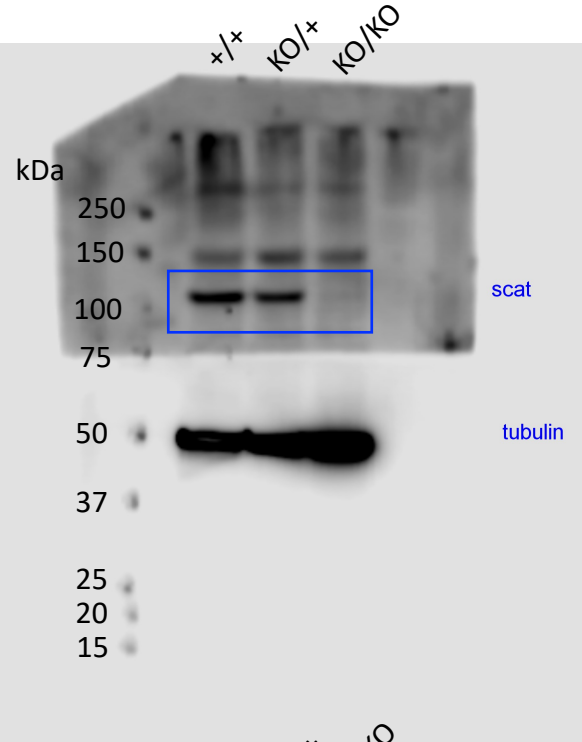
kb

500

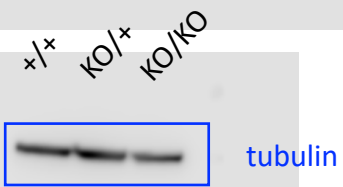
200

75





Membrane was cut at ~75kDa and the top was probed with anti-*scat* antibody, the bottom was probed with anti-tubulin antibody.



Because the original tubulin signal was so strong, we stripped the blot, incubated with a more diluted anti-tubulin solution and obtained a lighter exposure.