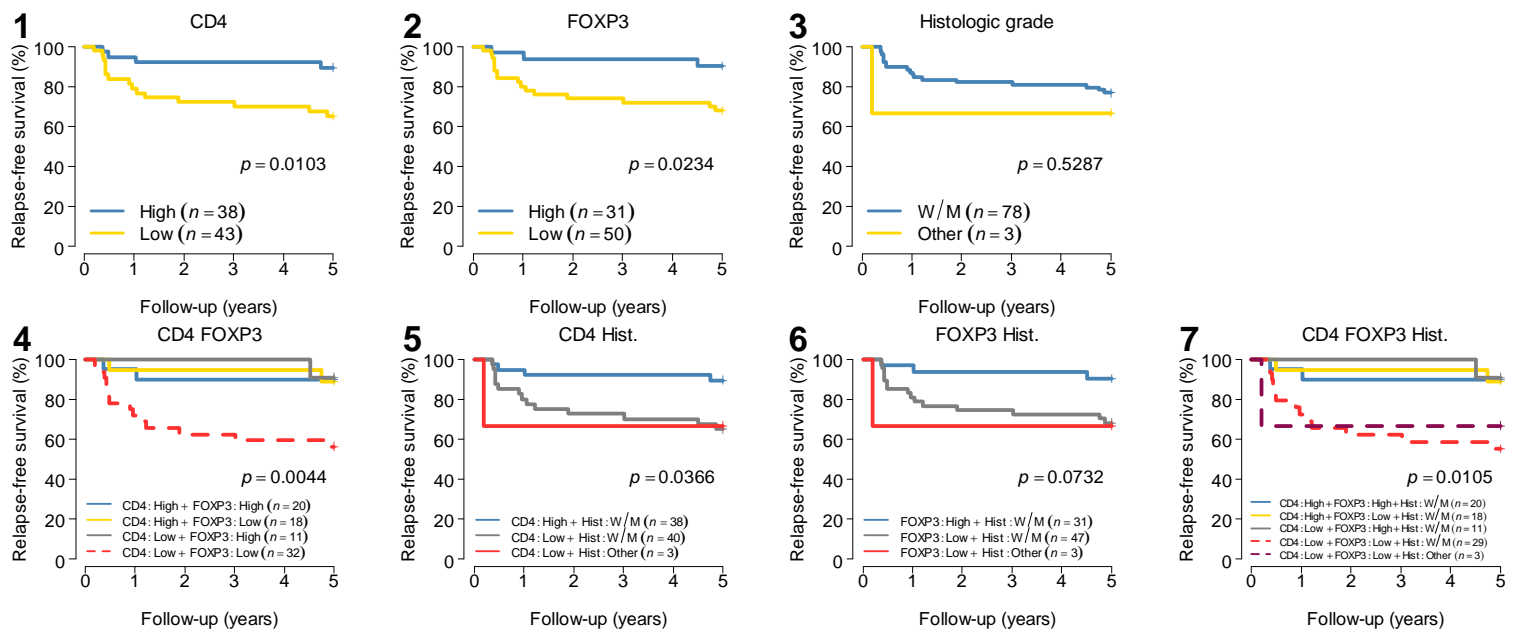


Fig. S2. Receiver operating characteristic curves based on the optimal marker subsets of TILs

A) The combination of two markers. **B)** The combination of three markers. AUC, area under the curve; CI, confidence interval.

A: Left side (n=81)



B: Right side (n=56)

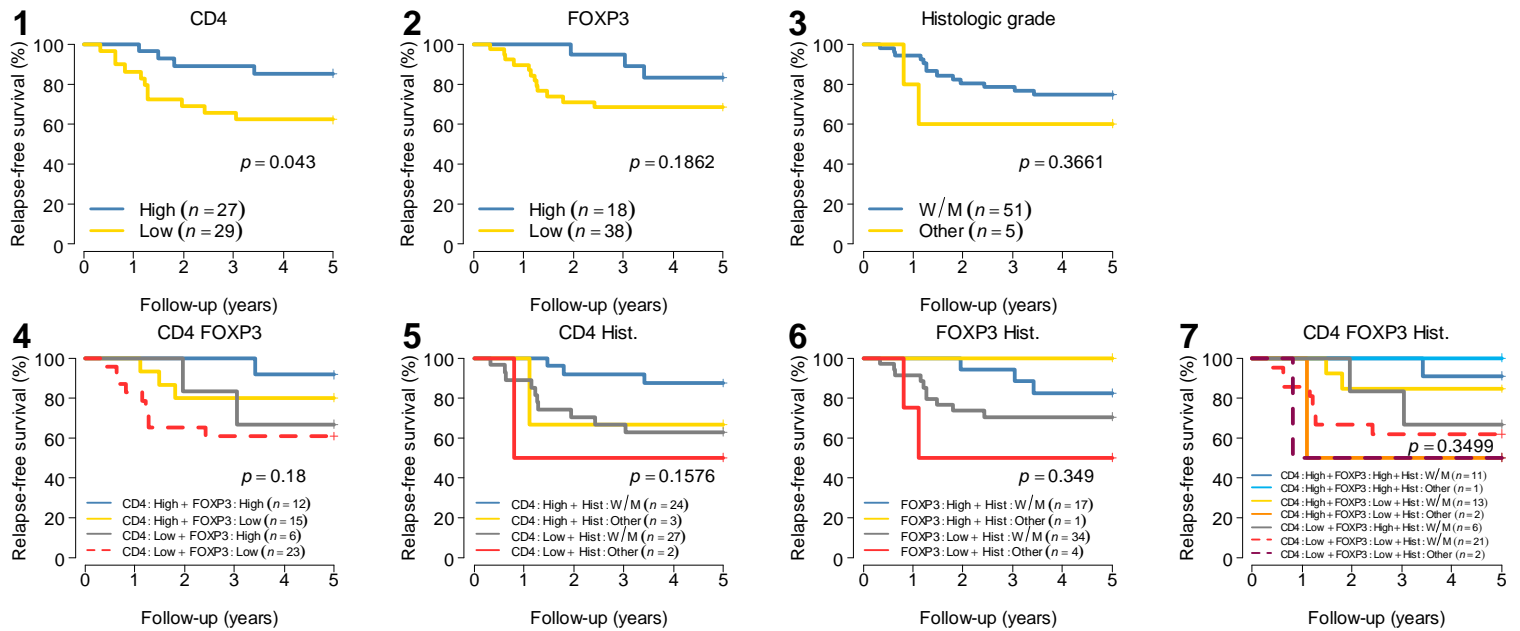


Fig. S3. Survival analysis after surgery based on the optimal marker subsets of TILs

A) RFS based on the tumours on the left side. **B)** RFS based on the tumours on the right side. W/M, well/moderately differentiated; Other, poorly differentiated/mucinous/undifferentiated; Hist., histologic grade; p-value, log-rank test.