

## Supplementary information

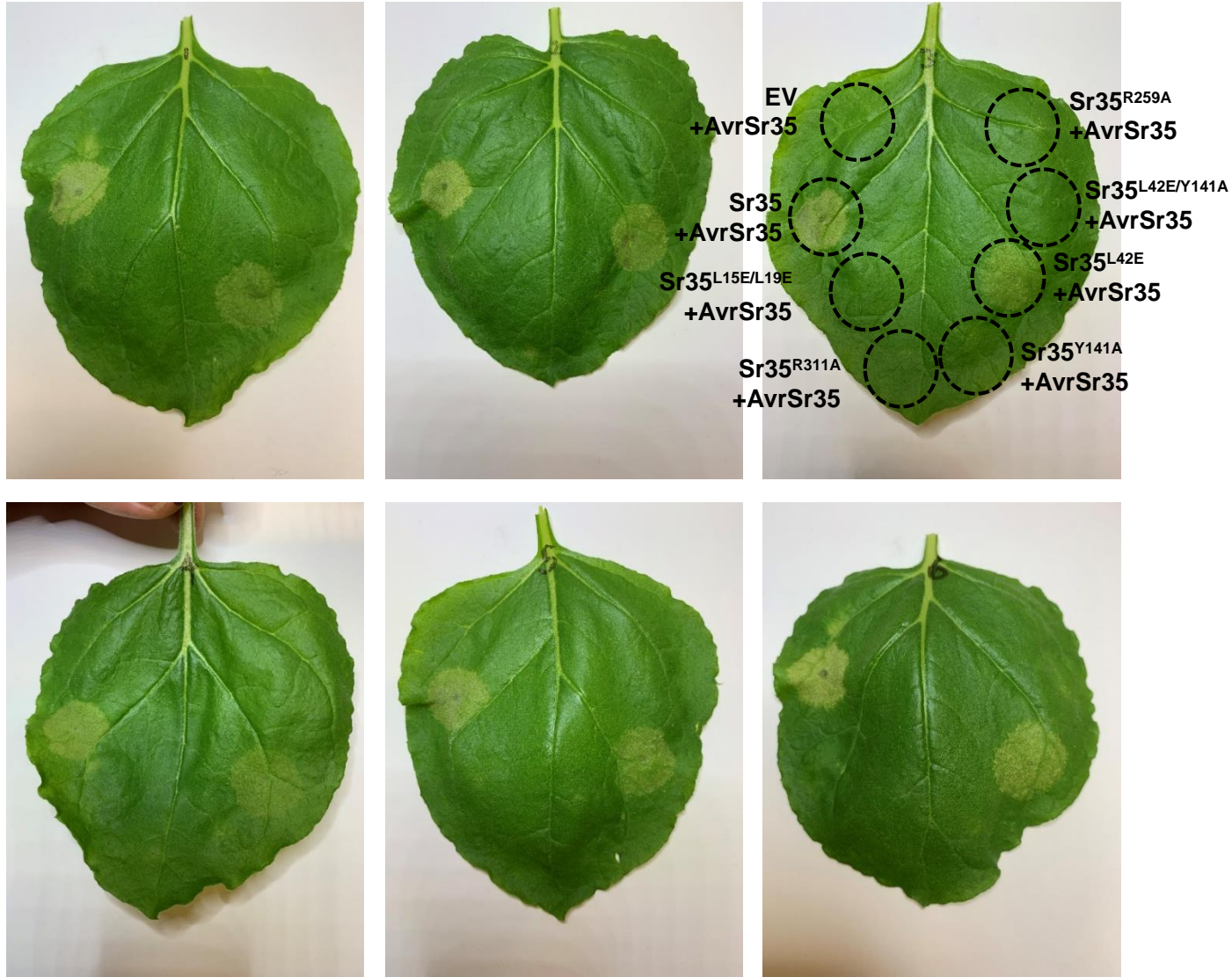
---

# A wheat resistosome defines common principles of immune receptor channels

---

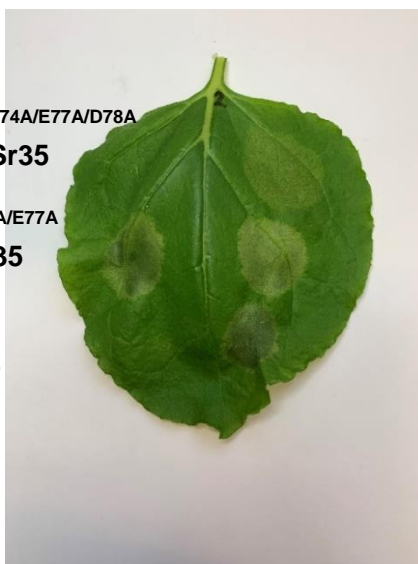
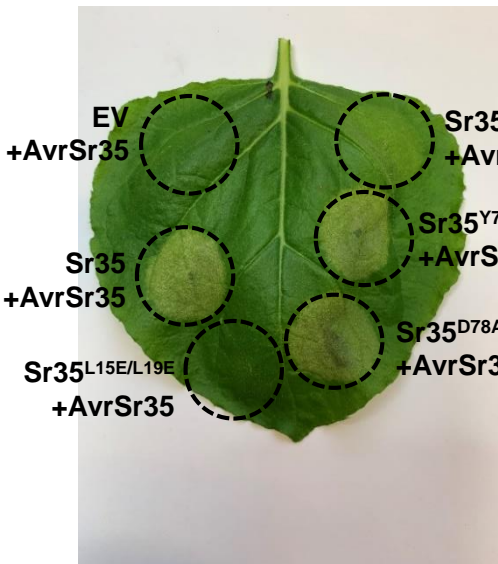
In the format provided by the  
authors and unedited

# oligomerization mutants



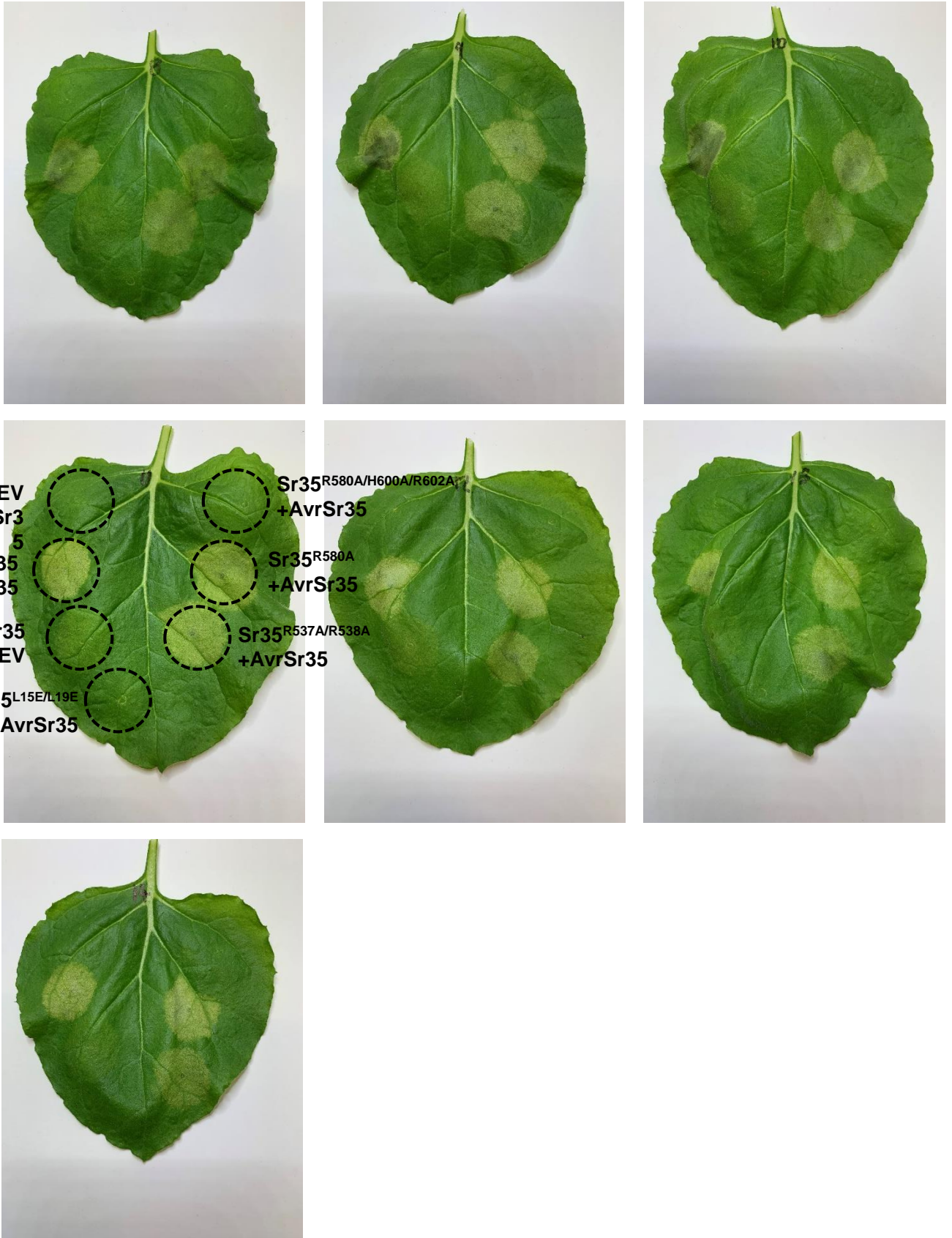
**Supplemental Information 1** Tobacco cell death data of inter-protomer CC domain and NBD mutants corresponding to Figure 2h

# EDVID mutants





# R-cluster mutants



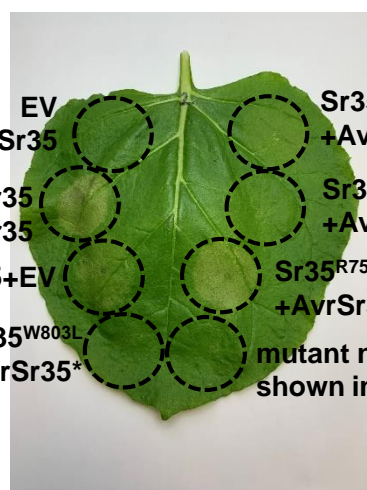
**Supplemental Information 2** Tobacco cell death data of EDVID motif and R-cluster corresponding to Figure 2j



**Supplemental Information 3** Tobacco cell death data of Sr35 channel mutants corresponding to Figure 3e



# Sr35 LRR mutants



EV +AvrSr35  
Sr35<sup>R730D/R755Q</sup> +AvrSr35  
Sr35<sup>R730D</sup> +AvrSr35  
Sr35<sup>R755Q</sup> +AvrSr35  
Sr35<sup>W803L</sup> +AvrSr35\*  
mutant not shown in MS



Sr35<sup>W803L</sup> +AvrSr35



\*shown in MS from leaf #4

**Supplemental Information 4**  
Tobacco cell death data of Sr35 LRR mutants corresponding to Figure 4d. \*shown in article from leaf #4

# AvrSr35 mutants

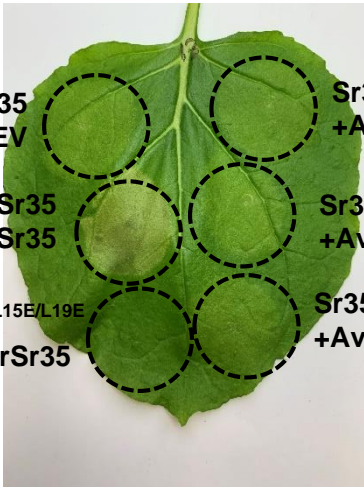


Sr35 +EV  
Sr35 +AvrSr35  
Sr35<sup>L15E/L19E</sup> +AvrSr35  
Sr35 +AvrSr35<sup>Y383A</sup>  
mutant not shown in MS  
Sr35 +AvrSr35<sup>A384Y/A388Y</sup>





# AvrSr35 mutants



Sr35  
+EV

Sr35  
+AvrSr35<sup>R395A</sup>

Sr35  
+AvrSr35

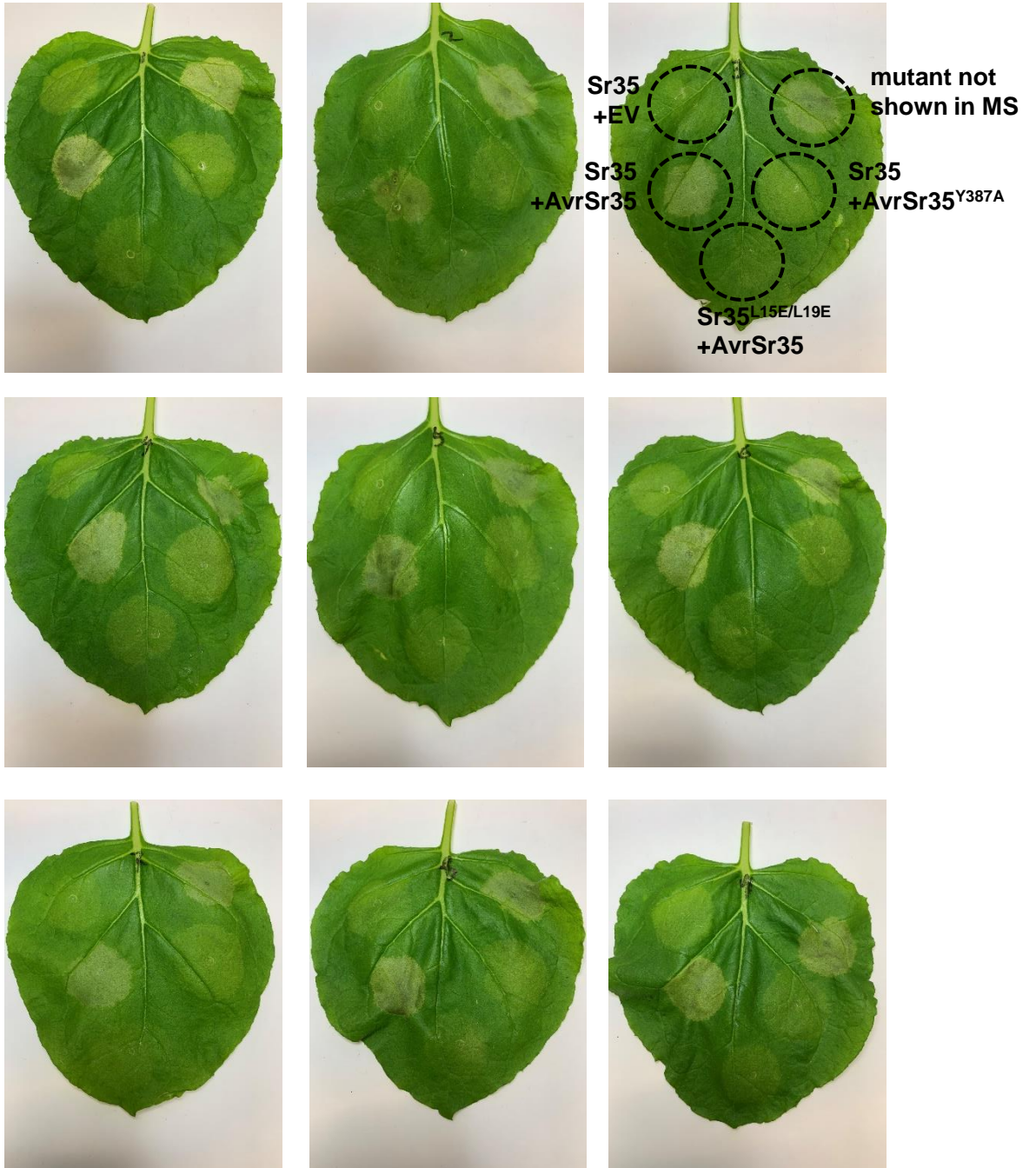
Sr35  
+AvrSr35<sup>Y387A/R381A</sup>

Sr35<sup>L15E/L19E</sup>  
+AvrSr35

Sr35  
+AvrSr35<sup>Y387A/R395A</sup>

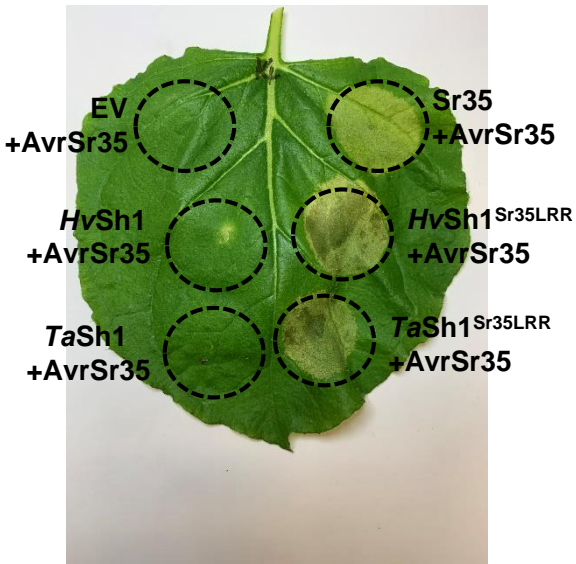


# AvrSr35 mutants



**Supplemental Information 5** Tobacco cell death data of AvrSr35 mutants corresponding to Figure 4f

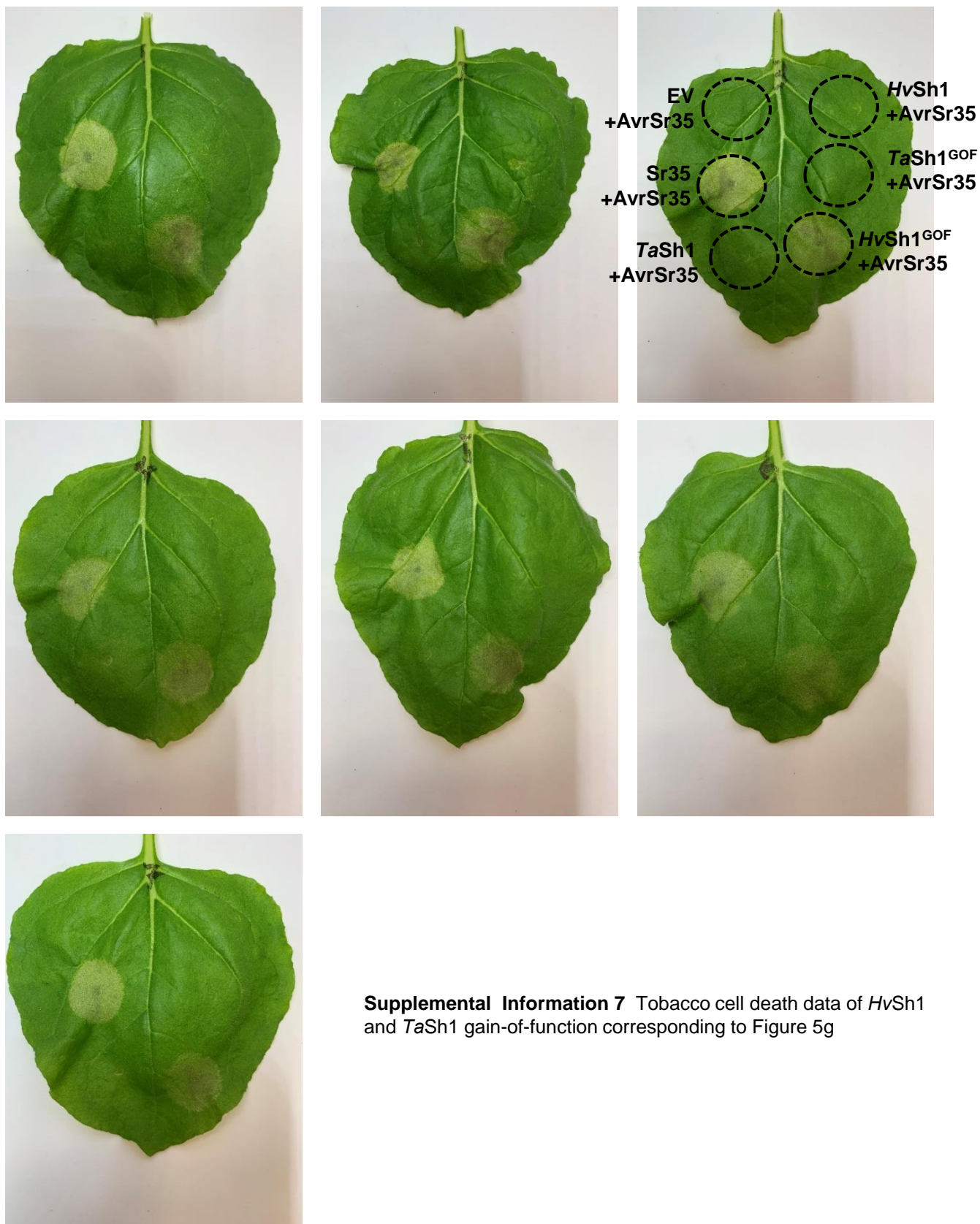
# HvSh1 and TaSh1 chimeras



**Supplemental Information 6** Tobacco cell death data of *HvSh1* and *TaSh1* chimeras corresponding to Figure 5c



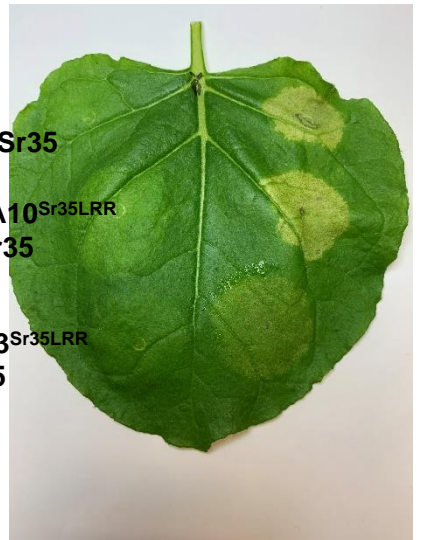
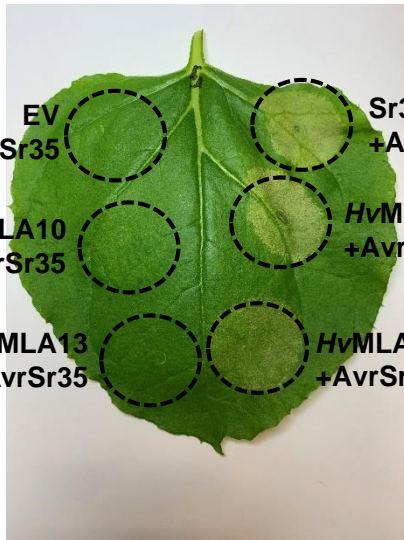
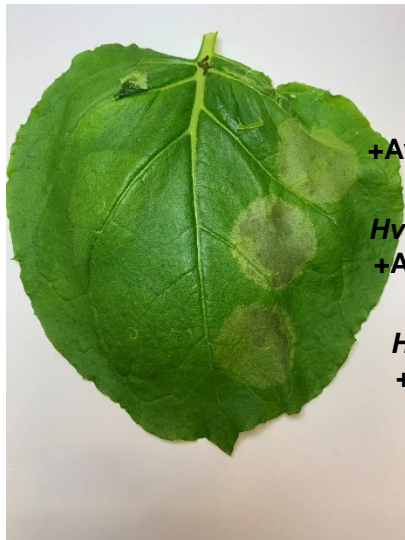
# *HvSh1* and *TaSh1* gain-of-function



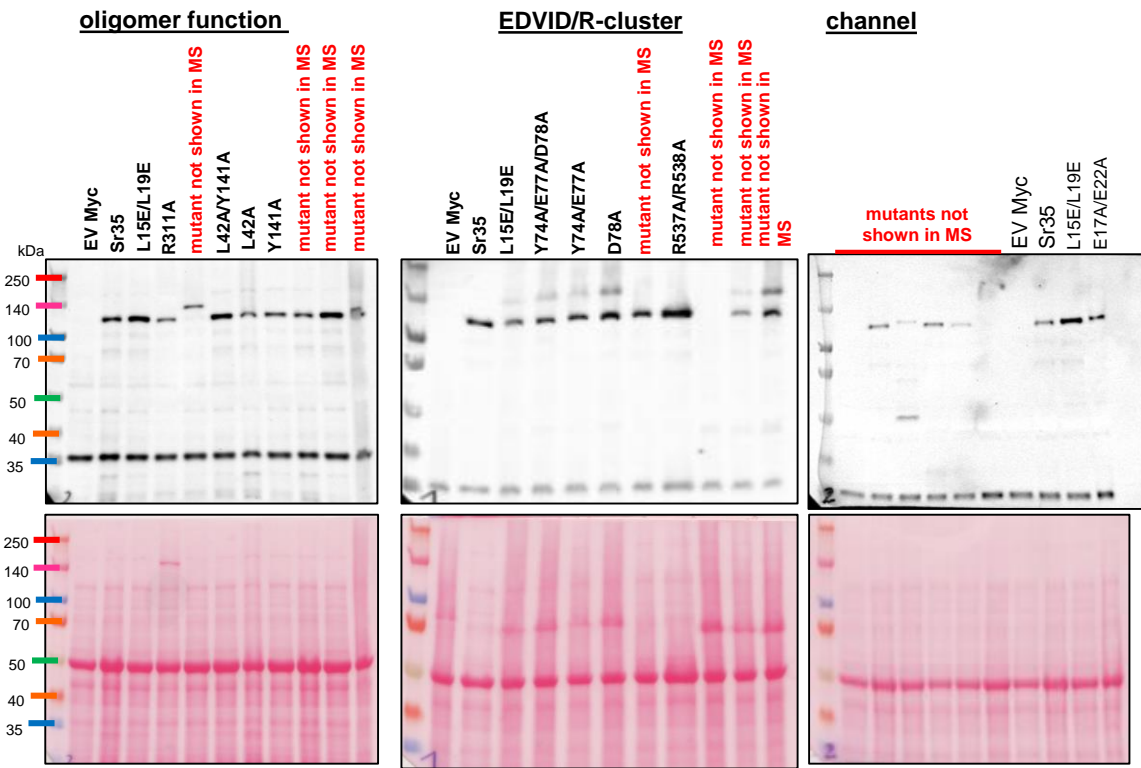
**Supplemental Information 7** Tobacco cell death data of *HvSh1* and *TaSh1* gain-of-function corresponding to Figure 5g



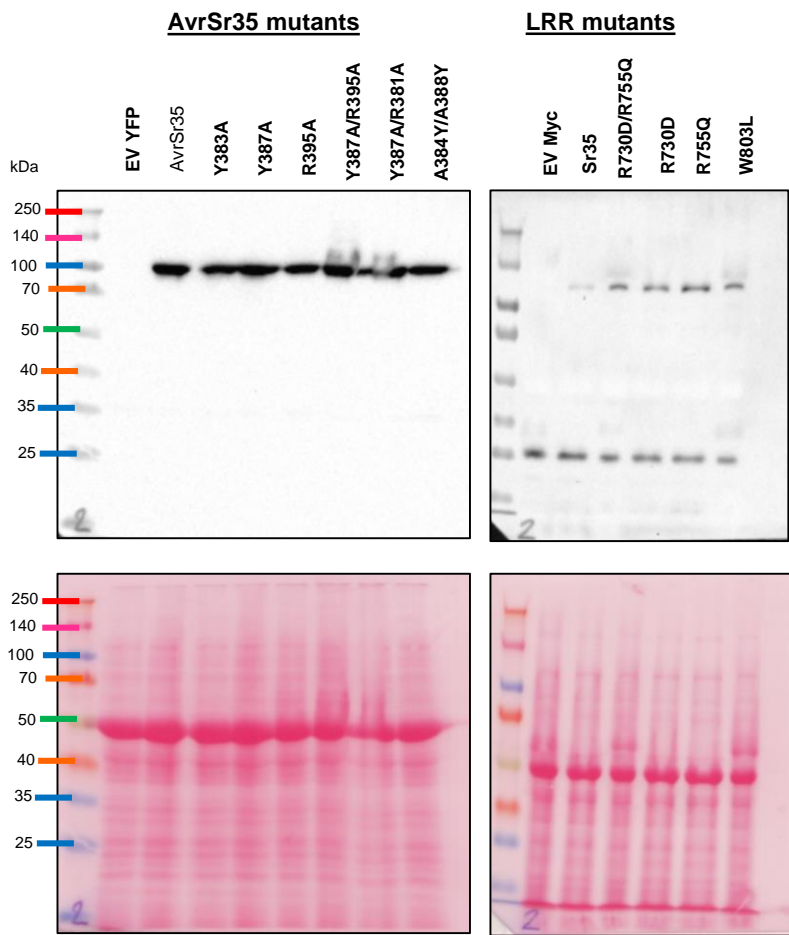
# HvMLA chimeras



**Supplemental Information 8** Tobacco cell death data of *HvMLA* chimeras corresponding to Figure 5k



**Supplemental Information 9** Uncropped western blots corresponding to Figure 2h, j (oligomer function and EDVID/R-cluster) and Figure 3e (channel).

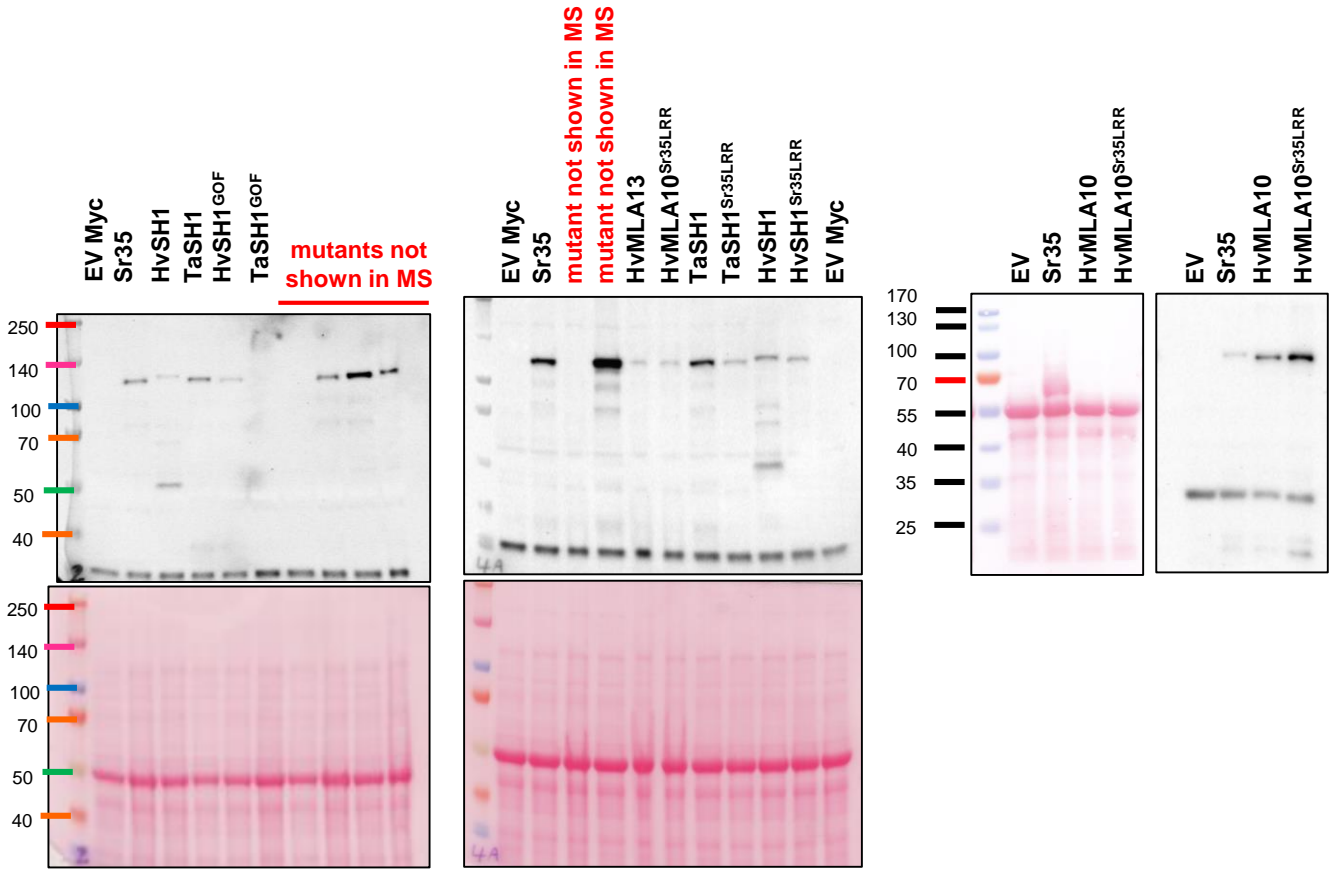


**Supplemental Information 10** Uncropped western blots corresponding to Figure 3d, f



Gain-of-function  
TaSH1 and HvSH1

Chimeras TaSH1, HvSH1, HvMLA10, HvMLA13



Supplemental Information 11 Uncropped western blots of Figure 5d, h, I