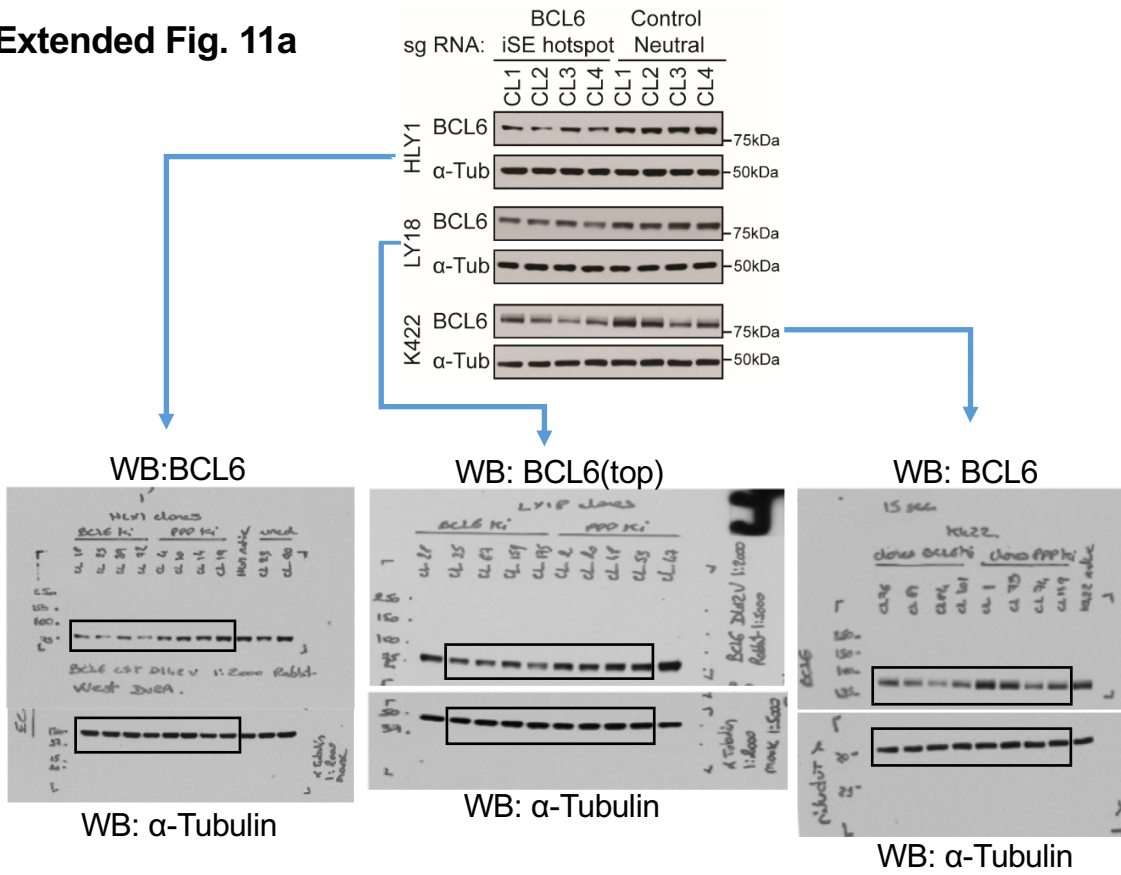
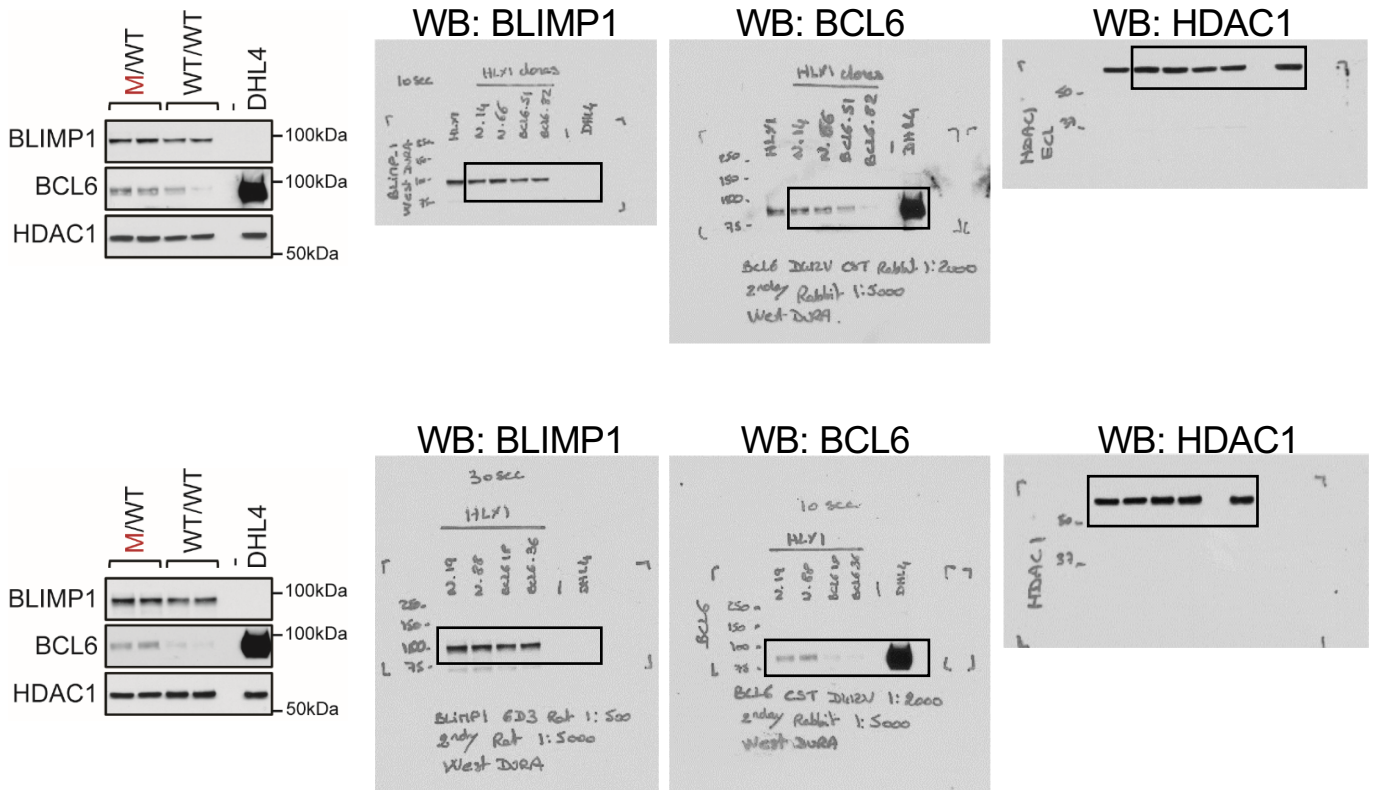


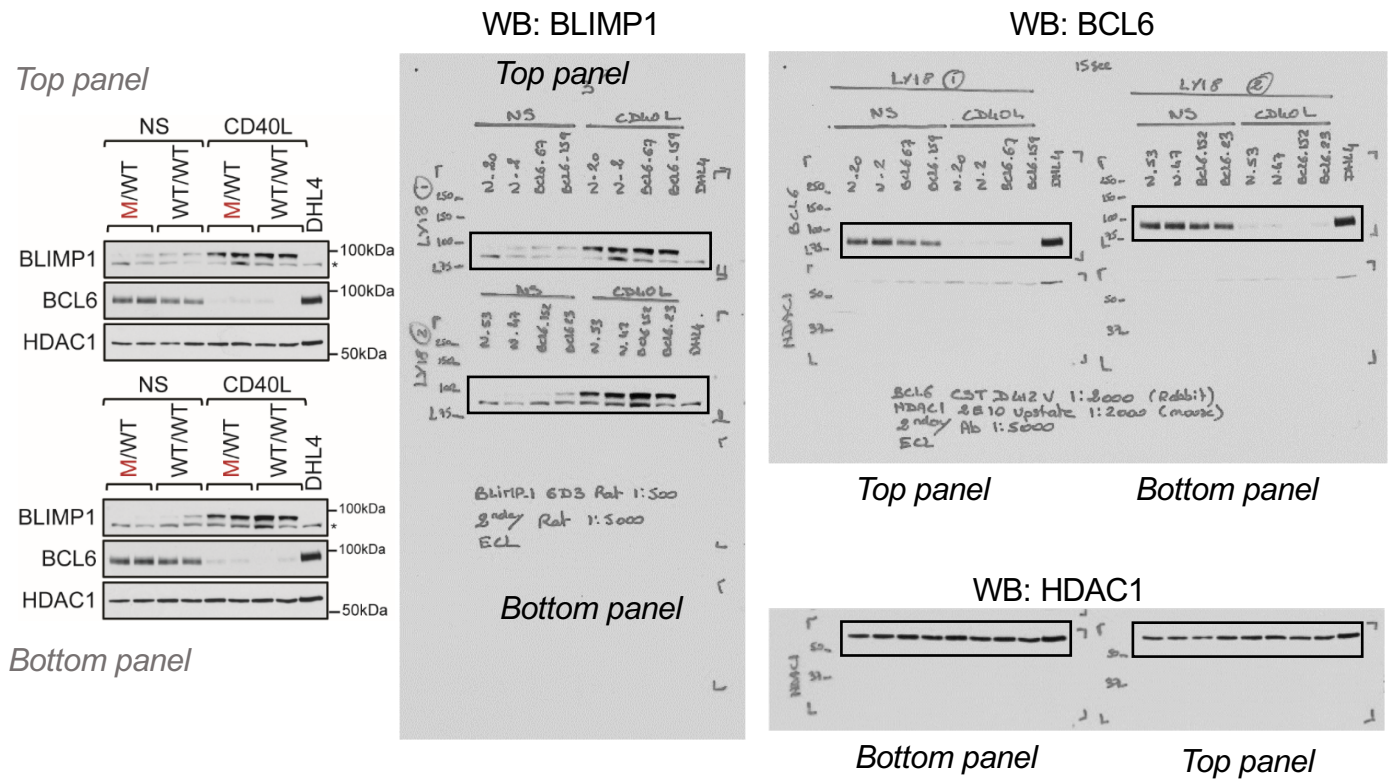
### Extended Fig. 11a



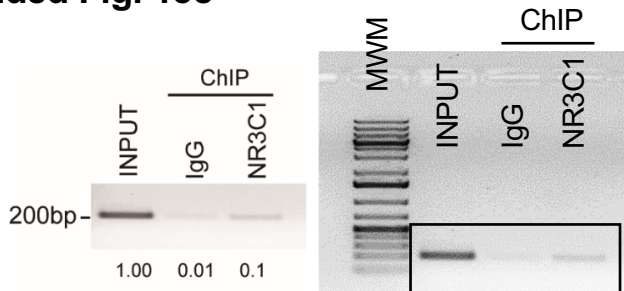
### Extended Fig. 11c



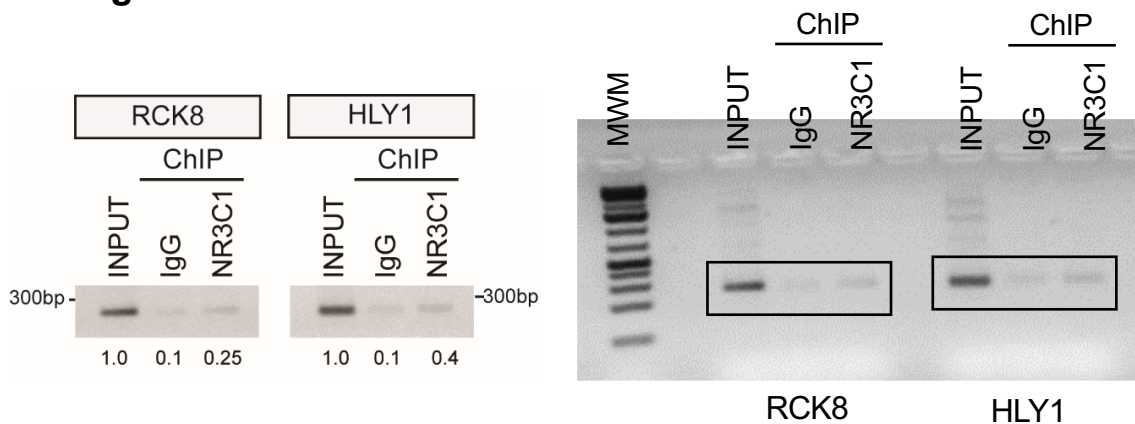
### Extended Fig. 11d



### Extended Fig. 13c



### Extended Fig. 14d



**Supplementary Figure 1:** original source images for western blots and gels. Uncropped source images for the immunoblots shown in Extended Data Figure 11a,c,d and the PCR-agarose gels shown in Extended Data Figures 13c and 14d. Loading control antibodies ( $\alpha$ -Tubulin for total extracts; HDAC1 for nuclear extracts) were run on the same membrane that was blotted for BLIMP1 and/ BCL6. Molecular weights have been labelled on each panel.