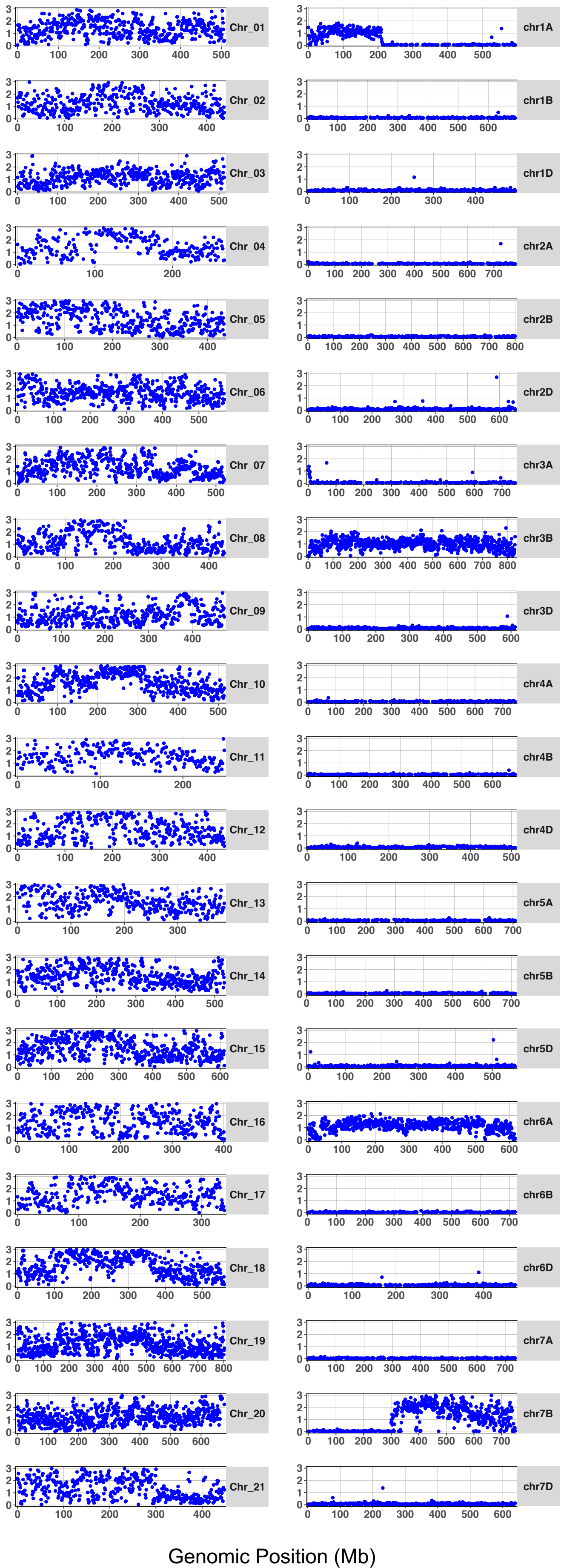


Normalized Coverage (X)



Genomic Position (Mb)

**Supplementary Figure S6.** Normalized reads per chromosome of intermediate wheatgrass containing additional wheat chromosomes (amphiploid). Intermediate wheatgrass chromosomes are labeled Chr\_01 to Chr\_21. Wheat chromosomes 3B and 6A are present in this amphiploid along with chromosomes fragments of 1A and 7B. Left panel shows intermediate wheatgrass chromosomes 1-21 whereas the right panel shows wheat chromosomes present in the sample [tissue id: 20STR000681\_DNA200507P02\_H02].