

Supplemental Online Content

Palmer JD, Klamer BG, Ballman KV, et al. Association of long-term outcomes with stereotactic radiosurgery vs whole-brain radiotherapy for resected brain metastasis: a secondary analysis of N107C/CEC.3 (Alliance for Clinical Trials in Oncology/Canadian Cancer Trials Group) randomized clinical trial. *JAMA Oncol*. Published online October 20, 2022. doi:10.1001/jamaoncol.2022.5049

eTable 1. Intracranial control rates based on treatment arm

eTable 2. Adverse Events Summary for Long-term Survivors

eTable 3. Changes in Quality of Life from baseline for long-term survivors comparing SRS vs WBRT

eFigure 1. Consort Diagram

eFigure 2. Number of Patients With a 3 SD. Decline in 3 or More Cognitive Tests Based on Treatment Arm

eFigure 3A. Categorical Change in QOL From Baseline Comparing SRS vs WBRT

eFigure 3B. Categorical Change From Baseline for QOL and Functional Independence Comparing SRS vs WBRT

This supplemental material has been provided by the authors to give readers additional information about their work.

eTable 1. Intracranial control rates based on treatment arm

	Number of patients without tumor failure/Total (%)		Difference (95% CI)	
	SRS	WBRT		
Surgical Bed Control				
at 3 months	26/27 (96.3%)	27/27 (100%)	-3.7 (-14.5, 7.1)	
at 6 months	22/27 (81.5%)	25/27 (92.6%)	-11.1 (-32.5, 10.3)	
at 12 months	13/27 (48.1%)	23/27 (85.2%)	-37 (-63.9, -10.2)	
Local Control of Unresected Brain Metastases				
at 3 months	24/27 (88.9%)	27/27 (100%)	-11.1 (-26.7, 4.5)	
at 6 months	22/27 (81.5%)	26/27 (96.3%)	-14.8 (-34.8, 5.2)	
at 12 months	19/27 (70.4%)	24/26 (92.3%)	-21.9 (-45.8, 1.9)	
Distant Brain Control				
at 3 months	25/27 (92.6%)	27/27 (100%)	-7.4 (-21, 6.2)	
at 6 months	21/27 (77.8%)	27/27 (100%)	-22.2 (-41.6, -2.8)	
at 12 months	17/27 (63%)	24/26 (92.3%)	-29.3 (-54, -4.7)	
Total Intracranial Brain Control				
at 3 months	24/27 (88.9%)	27/27 (100%)	-11.1 (-26.7, 4.5)	
at 6 months	19/27 (70.4%)	25/27 (92.6%)	-22.2 (-45.8, 1.3)	
at 12 months	11/27 (40.7%)	22/27 (81.5%)	-40.7 (-68.1, -13.4)	

eTable 2. Adverse Events Summary for Long-term survivors

ARM	Any attribution					
	Grade 0	Grade 1	Grade 2	Grade 3	Grade 4	Total
WBRT	1 3.70%	9 33.33%	9 33.33%	8 29.63%	0 0.00%	27 50.00%
SRS	5 18.52%	8 29.63%	9 33.33%	4 14.81%	1 3.70%	27 50.00%
Total	6 11.11%	17 31.48%	18 33.33%	12 22.22%	1 1.85%	54 100.0%

WBRT arm	Any attribution	
	Grade 3	Total
Hearing impaired	13	13
Anorexia	2	2
Thromboembolic event	2	2
Weight loss	2	2
Cognitive disturbance	1	1
Myalgia	1	1
Tooth infection	1	1
Total	22	22

SRS arm	Any attribution		
	Grade 3	Grade 4	Total
Frequency			
Central nervous system necrosis	3	0	3
Bone pain	1	0	1
Dyspnea	1	0	1
Fatigue	1	0	1
Hearing impaired	1	0	1
Neutrophil count decreased	0	1	1
Otitis media	1	0	1
Reversible posterior leukoencephalopathy syndrome	1	0	1
Weight loss	1	0	1
Total	10	1	11

eTable 3. Changes in Quality of Life from baseline for long-term survivors comparing SRS vs WBRT

FACT-BR Physical Well-Being Subscore Change from Baseline					
	SRS (N=27)	WBRT (N=27)		Total (N=54)	p value
FACT-BR Physical Well-Being Subscore: 3-Months					
N	27	25		52	
Mean (SD)	-0.1 (26.1)	-20.1 (20.9)		-9.8 (25.6)	
Median	0.0	-17.9		-7.1	
Q1, Q3	-14.3, 10.7	-35.7, -3.0		-32.1, 3.6	
Range	(-50.0-57.1)	(-60.7-21.4)		(-60.7-57.1)	
Difference (95% CI)			20 (7.2, 32.8)		0.0036 ¹
FACT-BR Physical Well-Being Subscore: 6-Months					
N	26	25		51	
Mean (SD)	-1.2 (24.0)	-9.7 (20.5)		-5.4 (22.5)	
Median	1.8	-3.6		-3.6	
Q1, Q3	-10.7, 10.7	-25.0, 4.2		-25.0, 7.1	
Range	(-46.4-60.7)	(-46.4-26.8)		(-46.4-60.7)	
Difference (95% CI)			8.5 (-3.7, 20.7)		0.1791 ¹
FACT-BR Physical Well-Being Subscore: 9-Months					
N	25	26		51	
Mean (SD)	-9.4 (25.5)	-6.1 (19.0)		-7.7 (22.3)	
Median	-17.9	-3.6		-7.1	
Q1, Q3	-21.4, 3.6	-21.4, 3.6		-21.4, 3.6	
Range	(-67.9-64.3)	(-46.4-29.2)		(-67.9-64.3)	
Difference (95% CI)			-3.3 (-15.7, 9.1)		0.6076 ¹
FACT-BR Physical Well-Being Subscore: 12-Months					
N	25	22		47	
Mean (SD)	-9.7 (12.5)	-1.8 (19.0)		-6.0 (16.2)	
Median	-10.7	-1.8		-7.1	
Q1, Q3	-14.3, 0.0	-14.3, 14.3		-14.3, 3.6	
Range	(-35.7-10.7)	(-35.7-35.1)		(-35.7-35.1)	
Difference (95% CI)			-7.9 (-17.2, 1.4)		0.1051 ¹
(report generated on 07MAR2017)					
¹ Unequal Variance T-Test					

FACT-BR Physical Well-Being Subscore Categorical Change from Baseline					
	SRS (N=27)	WBRT (N=27)		Total (N=54)	p value
FACT-BR Physical Well-Being Subscore: 3-Months					0.0245 ¹
Missing	0	1		1	
At least 10% drop	9 (33.3%)	17 (65.4%)		26 (49.1%)	
Stable	11 (40.7%)	8 (30.8%)		19 (35.8%)	
At least 10% improvement	7 (25.9%)	1 (3.8%)		8 (15.1%)	
Difference (95% CI) *			22.1 (9.3, 34.8)		
FACT-BR Physical Well-Being Subscore: 6-Months					0.2597 ¹
Missing	1	1		2	
At least 10% drop	7 (26.9%)	12 (46.2%)		19 (36.5%)	
Stable	11 (42.3%)	10 (38.5%)		21 (40.4%)	
At least 10% improvement	8 (30.8%)	4 (15.4%)		12 (23.1%)	
Difference (95% CI) *			15.4 (-0.2, 31)		
FACT-BR Physical Well-Being Subscore: 9-Months					0.1160 ¹
Missing	2	0		2	
At least 10% drop	16 (64.0%)	10 (37.0%)		26 (50.0%)	
Stable	5 (20.0%)	12 (44.4%)		17 (32.7%)	
At least 10% improvement	4 (16.0%)	5 (18.5%)		9 (17.3%)	
Difference (95% CI) *			-2.5 (-16.8, 11.7)		
FACT-BR Physical Well-Being Subscore: 12-Months					0.1035 ¹
Missing	2	4		6	
At least 10% drop	13 (52.0%)	11 (47.8%)		24 (50.0%)	
Stable	10 (40.0%)	5 (21.7%)		15 (31.3%)	
At least 10% improvement	2 (8.0%)	7 (30.4%)		9 (18.8%)	
Difference (95% CI) *			-22.4 (-36.7, -8.2)		
(report generated on 07MAR2017)					
¹ Chi-Square					
* difference in proportion in the last category (At least 10% improvement)					

**FACT-BR Social/Family Well-Being Subscore
Change from Baseline**

	SRS (N=27)	WBRT (N=27)		Total (N=54)	p value
FACT-BR Social/Family Well-Being Subscore: 3-Months					0.8705 ¹
N	27	25		52	
Mean (SD)	-2.2 (15.4)	-1.4 (16.0)		-1.8 (15.6)	
Median	-3.6	-3.6		-3.6	
Q1, Q3	-14.3, 7.1	-10.7, 10.7		-11.9, 7.7	
Range	(-28.6-33.3)	(-29.2-27.7)		(-29.2-33.3)	
Difference (95% CI)			-0.8 (-9.3, 7.7)		
FACT-BR Social/Family Well-Being Subscore: 6-Months					0.8243 ¹
N	26	25		51	
Mean (SD)	-1.4 (16.2)	-0.3 (19.8)		-0.8 (17.9)	
Median	-1.8	0.0		0.0	
Q1, Q3	-14.3, 10.7	-12.5, 10.7		-14.3, 10.7	
Range	(-28.6-28.6)	(-42.9-35.7)		(-42.9-35.7)	
Difference (95% CI)			-1.1 (-11.1, 8.9)		
FACT-BR Social/Family Well-Being Subscore: 9-Months					0.8113 ¹
N	25	26		51	
Mean (SD)	-3.0 (19.2)	-1.8 (17.3)		-2.4 (18.1)	
Median	-4.2	-3.6		-3.6	
Q1, Q3	-10.7, 10.7	-16.7, 8.3		-14.3, 10.7	
Range	(-53.6-30.4)	(-40.0-34.5)		(-53.6-34.5)	
Difference (95% CI)			-1.2 (-11.2, 8.8)		
FACT-BR Social/Family Well-Being Subscore: 12-Months					0.3885 ¹
N	25	22		47	
Mean (SD)	-7.2 (13.7)	-3.1 (18.2)		-5.3 (15.9)	
Median	-7.1	-5.7		-7.1	
Q1, Q3	-14.3, 0.0	-17.3, 5.8		-17.3, 3.6	
Range	(-33.3-28.6)	(-28.6-41.7)		(-33.3-41.7)	
Difference (95% CI)			-4.1 (-13.4, 5.2)		

(report generated on 07MAR2017)

¹Unequal Variance T-Test

FACT-BR Social/Family Well-Being Subscore Categorical Change from Baseline					
	SRS (N=27)	WBRT (N=27)		Total (N=54)	p value
FACT-BR Social/Family Well-Being Subscore: 3-Months					0.6742 ¹
Missing	0	1		1	
At least 10% drop	11 (40.7%)	8 (30.8%)		19 (35.8%)	
Stable	11 (40.7%)	11 (42.3%)		22 (41.5%)	
At least 10% improvement	5 (18.5%)	7 (26.9%)		12 (22.6%)	
Difference (95% CI)*			-8.4 (-24.1, 7.3)		
FACT-BR Social/Family Well-Being Subscore: 6-Months					0.6227 ¹
Missing	1	1		2	
At least 10% drop	11 (42.3%)	8 (30.8%)		19 (36.5%)	
Stable	8 (30.8%)	11 (42.3%)		19 (36.5%)	
At least 10% improvement	7 (26.9%)	7 (26.9%)		14 (26.9%)	
Difference (95% CI)*			0 (-16.7, 16.7)		
FACT-BR Social/Family Well-Being Subscore: 9-Months					0.8865 ¹
Missing	2	0		2	
At least 10% drop	8 (32.0%)	9 (33.3%)		17 (32.7%)	
Stable	10 (40.0%)	12 (44.4%)		22 (42.3%)	
At least 10% improvement	7 (28.0%)	6 (22.2%)		13 (25.0%)	
Difference (95% CI)*			5.8 (-10.5, 22.1)		
FACT-BR Social/Family Well-Being Subscore: 12-Months					0.2350 ¹
Missing	2	4		6	
At least 10% drop	9 (36.0%)	10 (43.5%)		19 (39.6%)	
Stable	14 (56.0%)	8 (34.8%)		22 (45.8%)	
At least 10% improvement	2 (8.0%)	5 (21.7%)		7 (14.6%)	
Difference (95% CI)*			-13.7 (-26.9, -0.6)		

(report generated on 07MAR2017)

¹Chi-Square

* difference in proportion in the last category (At least 10% improvement)

**FACT-BR Emotional Well-Being Subscore
Change from Baseline**

	SRS (N=27)	WBRT (N=27)		Total (N=54)	p value
FACT-BR Emotional Well-Being Subscore: 3-Months					
N	25	27		52	0.7085 ¹
Mean (SD)	-1.5 (16.4)	0.6 (23.2)		-0.4 (20.1)	
Median	0.0	12.5		0.0	
Q1, Q3	-8.3, 9.2	-12.5, 16.7		-8.3, 16.7	
Range	(-41.7-29.2)	(-58.3-25.0)		(-58.3-29.2)	
Difference (95% CI)			-2.1 (-13, 8.8)		
FACT-BR Emotional Well-Being Subscore: 6-Months					
N	26	26		52	0.0223 ¹
Mean (SD)	-0.1 (14.0)	10.7 (18.7)		5.3 (17.2)	
Median	0.0	12.5		6.3	
Q1, Q3	-8.3, 12.5	0.0, 20.8		-5.8, 16.7	
Range	(-33.3-20.8)	(-41.7-45.8)		(-41.7-45.8)	
Difference (95% CI)			-10.8 (-19.8, -1.8)		
FACT-BR Emotional Well-Being Subscore: 9-Months					
N	24	27		51	0.0020 ¹
Mean (SD)	-4.5 (19.1)	12.8 (18.6)		4.7 (20.6)	
Median	0.0	12.5		4.2	
Q1, Q3	-12.5, 4.2	0.0, 20.8		-8.3, 16.7	
Range	(-75.0-29.2)	(-20.8-50.0)		(-75.0-50.0)	
Difference (95% CI)			-17.3 (-27.7, -6.9)		
FACT-BR Emotional Well-Being Subscore: 12-Months					
N	24	22		46	0.0130 ¹
Mean (SD)	-6.0 (15.4)	6.6 (17.6)		0.0 (17.5)	
Median	-6.3	8.3		0.0	
Q1, Q3	-16.7, 8.3	0.0, 12.5		-15.8, 8.3	
Range	(-37.5-20.8)	(-33.3-45.8)		(-37.5-45.8)	
Difference (95% CI)			-12.6 (-22.2, -3)		

(report generated on 07MAR2017)

¹Unequal Variance T-Test

**FACT-BR Emotional Well-Being Subscore
Categorical Change from Baseline**

	SRS (N=27)	WBRT (N=27)		Total (N=54)	p value
FACT-BR Emotional Well-Being Subscore: 3-Months					0.0396 ¹
Missing	1	0		1	
At least 10% drop	6 (23.1%)	7 (25.9%)		13 (24.5%)	
Stable	14 (53.8%)	6 (22.2%)		20 (37.7%)	
At least 10% improvement	6 (23.1%)	14 (51.9%)		20 (37.7%)	
Difference (95% CI)*			-28.8 (-46.2, -11.3)		
FACT-BR Emotional Well-Being Subscore: 6-Months					0.0408 ¹
Missing	0	1		1	
At least 10% drop	7 (25.9%)	2 (7.7%)		9 (17.0%)	
Stable	13 (48.1%)	9 (34.6%)		22 (41.5%)	
At least 10% improvement	7 (25.9%)	15 (57.7%)		22 (41.5%)	
Difference (95% CI)*			-31.8 (-49.4, -14.2)		
FACT-BR Emotional Well-Being Subscore: 9-Months					0.0014 ¹
Missing	2	0		2	
At least 10% drop	8 (32.0%)	2 (7.4%)		10 (19.2%)	
Stable	15 (60.0%)	11 (40.7%)		26 (50.0%)	
At least 10% improvement	2 (8.0%)	14 (51.9%)		16 (30.8%)	
Difference (95% CI)*			-43.9 (-59, -28.7)		
FACT-BR Emotional Well-Being Subscore: 12-Months					0.0391 ¹
Missing	2	5		7	
At least 10% drop	12 (48.0%)	3 (13.6%)		15 (31.9%)	
Stable	9 (36.0%)	12 (54.5%)		21 (44.7%)	
At least 10% improvement	4 (16.0%)	7 (31.8%)		11 (23.4%)	
Difference (95% CI)*			-15.8 (-31.6, 0)		

(report generated on 07MAR2017)
¹Chi-Square
* difference in proportion in the last category (At least 10% improvement)

**FACT-BR Functional Well-Being Subscore
Change from Baseline**

	SRS (N=27)	WBRT (N=27)		Total (N=54)	p value
FACT-BR Functional Well-Being Subscore: 3-Months					
N	25	27		52	
Mean (SD)	7.0 (26.4)	-7.7 (13.9)		-0.6 (21.9)	
Median	14.3	-3.6		-3.6	
Q1, Q3	-3.6, 25.0	-17.9, 0.0		-14.3, 14.3	
Range	(-60.7-57.1)	(-46.4-17.9)		(-60.7-57.1)	
Difference (95% CI)			14.7 (3.1, 26.3)		
FACT-BR Functional Well-Being Subscore: 6-Months					
N	26	26		52	0.0723 ¹
Mean (SD)	6.3 (20.8)	-2.7 (13.7)		1.8 (18.0)	
Median	5.4	-3.6		0.0	
Q1, Q3	-7.1, 14.3	-14.3, 10.7		-8.9, 14.3	
Range	(-35.7-53.6)	(-25.0-21.4)		(-35.7-53.6)	
Difference (95% CI)			9 (-0.6, 18.6)		
FACT-BR Functional Well-Being Subscore: 9-Months					
N	24	27		51	0.3034 ¹
Mean (SD)	1.2 (24.8)	7.7 (19.1)		4.6 (22.0)	
Median	-1.8	10.7		3.6	
Q1, Q3	-14.3, 12.5	-7.1, 21.4		-10.7, 17.9	
Range	(-40.0-53.6)	(-25.0-57.1)		(-40.0-57.1)	
Difference (95% CI)			-6.5 (-18.8, 5.8)		
FACT-BR Functional Well-Being Subscore: 12-Months					
N	24	22		46	0.3874 ¹
Mean (SD)	-3.4 (20.1)	1.9 (20.9)		-0.9 (20.4)	
Median	-3.6	-2.4		-3.6	
Q1, Q3	-10.7, 5.4	-14.3, 10.7		-10.7, 7.1	
Range	(-53.6-53.6)	(-32.1-39.3)		(-53.6-53.6)	
Difference (95% CI)			-5.3 (-17.2, 6.6)		

(report generated on 07MAR2017)

¹Unequal Variance T-Test

FACT-BR Functional Well-Being Subscore Categorical Change from Baseline					
	SRS (N=27)	WBRT (N=27)		Total (N=54)	p value
FACT-BR Functional Well-Being Subscore: 3-Months					
Missing	1	0		1	0.0084 ¹
At least 10% drop	6 (23.1%)	12 (44.4%)		18 (34.0%)	
Stable	7 (26.9%)	12 (44.4%)		19 (35.8%)	
At least 10% improvement	13 (50.0%)	3 (11.1%)		16 (30.2%)	
Difference (95% CI)*			38.9 (23.1, 54.6)		
FACT-BR Functional Well-Being Subscore: 6-Months					
Missing	0	1		1	0.3568 ¹
At least 10% drop	5 (18.5%)	9 (34.6%)		14 (26.4%)	
Stable	11 (40.7%)	10 (38.5%)		21 (39.6%)	
At least 10% improvement	11 (40.7%)	7 (26.9%)		18 (34.0%)	
Difference (95% CI)*			13.8 (-3.8, 31.5)		
FACT-BR Functional Well-Being Subscore: 9-Months					
Missing	2	0		2	0.2584 ¹
At least 10% drop	9 (36.0%)	5 (18.5%)		14 (26.9%)	
Stable	8 (32.0%)	8 (29.6%)		16 (30.8%)	
At least 10% improvement	8 (32.0%)	14 (51.9%)		22 (42.3%)	
Difference (95% CI)*			-19.9 (-38.1, -1.6)		
FACT-BR Functional Well-Being Subscore: 12-Months					
Missing	2	5		7	0.3734 ¹
At least 10% drop	8 (32.0%)	7 (31.8%)		15 (31.9%)	
Stable	14 (56.0%)	9 (40.9%)		23 (48.9%)	
At least 10% improvement	3 (12.0%)	6 (27.3%)		9 (19.1%)	
Difference (95% CI)*			-15.3 (-30, -0.6)		
(report generated on 07MAR2017)					
¹ Chi-Square					
* difference in proportion in the last category (At least 10% improvement)					

FACT-BR General Score Change from Baseline					
	SRS (N=27)	WBRT (N=27)		Total (N=54)	p value
FACT-BR General Score: 3-Months					
N	25	25		50	
Mean (SD)	0.6 (17.2)	-7.5 (12.6)		-3.5 (15.5)	
Median	3.7	-4.6		-1.5	
Q1, Q3	-7.4, 9.4	-13.1, 1.4		-13.0, 5.6	
Range	(-28.7-41.7)	(-35.3-11.1)		(-35.3-41.7)	
Difference (95% CI)			8.1 (-0.3, 16.5)		
FACT-BR General Score: 6-Months					
N	25	25		50	0.5649 ¹
Mean (SD)	1.2 (13.8)	-0.9 (11.3)		0.1 (12.5)	
Median	3.1	0.9		1.1	
Q1, Q3	-8.3, 6.5	-10.2, 7.1		-10.2, 7.1	
Range	(-20.4-39.8)	(-18.2-21.8)		(-20.4-39.8)	
Difference (95% CI)			2.1 (-4.9, 9.1)		
FACT-BR General Score: 9-Months					
N	24	26		50	0.0993 ¹
Mean (SD)	-4.1 (16.6)	3.1 (12.9)		-0.4 (15.1)	
Median	-2.3	3.4		-1.2	
Q1, Q3	-16.7, 4.6	-2.8, 11.1		-8.0, 7.3	
Range	(-38.0-41.7)	(-29.8-28.7)		(-38.0-41.7)	
Difference (95% CI)			-7.2 (-15.5, 1.1)		
FACT-BR General Score: 12-Months					
N	24	21		45	0.0396 ¹
Mean (SD)	-6.6 (10.5)	1.2 (13.7)		-3.0 (12.6)	
Median	-9.2	1.5		-3.7	
Q1, Q3	-12.3, -1.9	-11.1, 11.1		-12.0, 6.3	
Range	(-26.9-23.1)	(-20.2-23.0)		(-26.9-23.1)	
Difference (95% CI)			-7.8 (-15, -0.6)		
(report generated on 07MAR2017)					
¹ Unequal Variance T-Test					

FACT-BR General Score Categorical Change from Baseline					
	SRS (N=27)	WBRT (N=27)		Total (N=54)	p value
FACT-BR General Score: 3-Months					0.0606 ¹
Missing	1	1		2	
At least 10% drop	6 (23.1%)	12 (46.2%)		18 (34.6%)	
Stable	14 (53.8%)	13 (50.0%)		27 (51.9%)	
At least 10% improvement	6 (23.1%)	1 (3.8%)		7 (13.5%)	
Difference (95% CI)*			19.2 (6.9, 31.6)		
FACT-BR General Score: 6-Months					0.9481 ¹
Missing	1	1		2	
At least 10% drop	7 (26.9%)	8 (30.8%)		15 (28.8%)	
Stable	13 (50.0%)	12 (46.2%)		25 (48.1%)	
At least 10% improvement	6 (23.1%)	6 (23.1%)		12 (23.1%)	
Difference (95% CI)*			0 (-15.9, 15.9)		
FACT-BR General Score: 9-Months					0.4042 ¹
Missing	2	0		2	
At least 10% drop	8 (32.0%)	6 (22.2%)		14 (26.9%)	
Stable	14 (56.0%)	14 (51.9%)		28 (53.8%)	
At least 10% improvement	3 (12.0%)	7 (25.9%)		10 (19.2%)	
Difference (95% CI)*			-13.9 (-28.5, 0.6)		
FACT-BR General Score: 12-Months					0.0763 ¹
Missing	2	5		7	
At least 10% drop	12 (48.0%)	7 (31.8%)		19 (40.4%)	
Stable	12 (48.0%)	9 (40.9%)		21 (44.7%)	
At least 10% improvement	1 (4.0%)	6 (27.3%)		7 (14.9%)	
Difference (95% CI)*			-23.3 (-36.3, -10.3)		
(report generated on 07MAR2017)					
¹ Chi-Square					
* difference in proportion in the last category (At least 10% improvement)					

FACT-BR Additional Concerns Change from Baseline					
	SRS (N=27)	WBRT (N=27)		Total (N=54)	p value
FACT-BR Additional Concerns: 3-Months					
N	26	27		53	
Mean (SD)	6.3 (18.1)	-4.1 (13.6)		1.0 (16.6)	
Median	2.7	-1.1		0.3	
Q1, Q3	-1.1, 10.9	-10.9, 3.3		-5.4, 7.6	
Range	(-21.7-62.0)	(-40.2-20.3)		(-40.2-62.0)	
Difference (95% CI)			10.4 (1.8, 19)		
FACT-BR Additional Concerns: 6-Months					
N	25	25		50	
Mean (SD)	6.9 (15.8)	-1.0 (12.7)		3.0 (14.7)	
Median	6.5	3.6		4.3	
Q1, Q3	-1.1, 10.9	-8.7, 6.5		-5.4, 9.8	
Range	(-21.7-59.8)	(-25.3-25.0)		(-25.3-59.8)	
Difference (95% CI)			7.9 (0, 15.8)		
FACT-BR Additional Concerns: 9-Months					
N	24	27		51	
Mean (SD)	4.8 (16.0)	-1.6 (11.7)		1.4 (14.1)	
Median	1.1	-1.1		0.0	
Q1, Q3	-4.3, 10.0	-9.8, 6.5		-6.5, 7.6	
Range	(-18.5-53.3)	(-23.9-29.3)		(-23.9-53.3)	
Difference (95% CI)			6.4 (-1.4, 14.2)		
FACT-BR Additional Concerns: 12-Months					
N	24	23		47	
Mean (SD)	-0.7 (14.7)	-2.9 (15.1)		-1.8 (14.8)	
Median	-2.2	-3.3		-3.3	
Q1, Q3	-12.5, 7.6	-12.0, 6.1		-12.0, 7.6	
Range	(-22.7-35.9)	(-39.4-22.5)		(-39.4-35.9)	
Difference (95% CI)			2.2 (-6.3, 10.7)		
(report generated on 07MAR2017)					
¹ Unequal Variance T-Test					

FACT-BR Additional Concerns Categorical Change from Baseline					
	SRS (N=27)	WBRT (N=27)		Total (N=54)	p value
FACT-BR Additional Concerns: 3-Months					0.0610 ¹
At least 10% drop	5 (18.5%)	7 (25.9%)		12 (22.2%)	
Stable	13 (48.1%)	18 (66.7%)		31 (57.4%)	
At least 10% improvement	9 (33.3%)	2 (7.4%)		11 (20.4%)	
Difference (95% CI)*			25.9 (11.5, 40.3)		
FACT-BR Additional Concerns: 6-Months					0.1933 ¹
Missing	1	2		3	
At least 10% drop	3 (11.5%)	6 (24.0%)		9 (17.6%)	
Stable	15 (57.7%)	16 (64.0%)		31 (60.8%)	
At least 10% improvement	8 (30.8%)	3 (12.0%)		11 (21.6%)	
Difference (95% CI)*			18.8 (3.7, 33.8)		
FACT-BR Additional Concerns: 9-Months					0.3599 ¹
Missing	2	0		2	
At least 10% drop	3 (12.0%)	6 (22.2%)		9 (17.3%)	
Stable	16 (64.0%)	18 (66.7%)		34 (65.4%)	
At least 10% improvement	6 (24.0%)	3 (11.1%)		9 (17.3%)	
Difference (95% CI)*			12.9 (-1.3, 27)		
FACT-BR Additional Concerns: 12-Months					0.9036 ¹
Missing	2	4		6	
At least 10% drop	8 (32.0%)	6 (26.1%)		14 (29.2%)	
Stable	12 (48.0%)	12 (52.2%)		24 (50.0%)	
At least 10% improvement	5 (20.0%)	5 (21.7%)		10 (20.8%)	
Difference (95% CI)*			-1.7 (-17.1, 13.6)		
(report generated on 07MAR2017)					
¹ Chi-Square					
* difference in proportion in the last category (At least 10% improvement)					

FACT-BR Total Score Change from Baseline					
	SRS (N=27)	WBRT (N=27)		Total (N=54)	p value
FACT-BR Total Score: 3-Months					0.0310 ¹
N	24	25		49	
Mean (SD)	2.9 (16.7)	-6.1 (10.9)		-1.7 (14.6)	
Median	0.1	-6.1		-1.0	
Q1, Q3	-4.3, 7.9	-12.0, 2.0		-11.0, 3.9	
Range	(-25.5-51.0)	(-31.5-12.5)		(-31.5-51.0)	
Difference (95% CI)			9 (1.1, 16.9)		
FACT-BR Total Score: 6-Months					0.2578 ¹
N	24	24		48	
Mean (SD)	3.4 (13.6)	-0.7 (10.8)		1.3 (12.3)	
Median	1.3	-1.3		0.9	
Q1, Q3	-6.0, 8.3	-6.4, 7.3		-6.4, 8.0	
Range	(-19.5-49.0)	(-20.5-19.2)		(-20.5-49.0)	
Difference (95% CI)			4.1 (-2.8, 11)		
FACT-BR Total Score: 9-Months					0.9344 ¹
N	23	26		49	
Mean (SD)	0.7 (14.7)	1.0 (11.2)		0.9 (12.8)	
Median	-1.8	-1.6		-1.7	
Q1, Q3	-8.3, 5.9	-5.6, 9.5		-7.0, 6.9	
Range	(-23.0-47.0)	(-22.1-29.0)		(-23.0-47.0)	
Difference (95% CI)			-0.3 (-7.7, 7.1)		
FACT-BR Total Score: 12-Months					0.3251 ¹
N	23	21		44	
Mean (SD)	-4.4 (11.2)	-0.7 (13.6)		-2.6 (12.4)	
Median	-7.0	2.0		-4.8	
Q1, Q3	-10.5, -2.0	-10.0, 8.4		-10.3, 5.0	
Range	(-25.0-29.0)	(-28.7-22.4)		(-28.7-29.0)	
Difference (95% CI)			-3.7 (-11.1, 3.7)		
(report generated on 07MAR2017)					
¹ Unequal Variance T-Test					

FACT-BR Total Score Categorical Change from Baseline					
	SRS (N=27)	WBRT (N=27)		Total (N=54)	p value
FACT-BR Total Score: 3-Months					0.4278 ¹
Missing	1	1		2	
At least 10% drop	7 (26.9%)	11 (42.3%)		18 (34.6%)	
Stable	15 (57.7%)	13 (50.0%)		28 (53.8%)	
At least 10% improvement	4 (15.4%)	2 (7.7%)		6 (11.5%)	
Difference (95% CI)*			7.7 (-4.3, 19.7)		
FACT-BR Total Score: 6-Months					0.6341 ¹
Missing	1	2		3	
At least 10% drop	4 (15.4%)	6 (24.0%)		10 (19.6%)	
Stable	17 (65.4%)	16 (64.0%)		33 (64.7%)	
At least 10% improvement	5 (19.2%)	3 (12.0%)		8 (15.7%)	
Difference (95% CI)*			7.2 (-6.4, 20.9)		
FACT-BR Total Score: 9-Months					0.8895 ¹
Missing	2	0		2	
At least 10% drop	7 (28.0%)	6 (22.2%)		13 (25.0%)	
Stable	13 (52.0%)	15 (55.6%)		28 (53.8%)	
At least 10% improvement	5 (20.0%)	6 (22.2%)		11 (21.2%)	
Difference (95% CI)*			-2.2 (-17.6, 13.2)		
FACT-BR Total Score: 12-Months					0.5800 ¹
Missing	2	5		7	
At least 10% drop	9 (36.0%)	7 (31.8%)		16 (34.0%)	
Stable	14 (56.0%)	11 (50.0%)		25 (53.2%)	
At least 10% improvement	2 (8.0%)	4 (18.2%)		6 (12.8%)	
Difference (95% CI)*			-10.2 (-22.8, 2.4)		
(report generated on 07MAR2017)					
¹ Chi-Square					
* difference in proportion in the last category (At least 10% improvement)					

Barthel ADL Index Change from Baseline					
	SRS (N=27)	WBRT (N=27)		Total (N=54)	p value
Barthel ADL Index: 3-Months					0.0261 ¹
N	26	27		53	
Mean (SD)	3.3 (7.2)	-0.2 (2.2)		1.5 (5.5)	
Median	0.0	0.0		0.0	
Q1, Q3	0.0, 0.0	0.0, 0.0		0.0, 0.0	
Range	(0.0-25.0)	(-5.0-5.0)		(-5.0-25.0)	
Difference (95% CI)			3.5 (0.6, 6.4)		
Barthel ADL Index: 6-Months					0.1077 ¹
N	26	26		52	
Mean (SD)	2.1 (6.5)	-0.4 (4.2)		0.9 (5.6)	
Median	0.0	0.0		0.0	
Q1, Q3	0.0, 0.0	0.0, 0.0		0.0, 0.0	
Range	(-5.0-25.0)	(-20.0-5.0)		(-20.0-25.0)	
Difference (95% CI)			2.5 (-0.5, 5.5)		
Barthel ADL Index: 9-Months					0.0537 ¹
N	24	27		51	
Mean (SD)	3.1 (8.3)	-1.7 (9.0)		0.6 (8.9)	
Median	0.0	0.0		0.0	
Q1, Q3	0.0, 0.0	0.0, 0.0		0.0, 0.0	
Range	(-5.0-25.0)	(-45.0-5.0)		(-45.0-25.0)	
Difference (95% CI)			4.8 (0.1, 9.5)		
Barthel ADL Index: 12-Months					0.0654 ¹
N	26	23		49	
Mean (SD)	2.5 (8.2)	-2.4 (9.8)		0.2 (9.2)	
Median	0.0	0.0		0.0	
Q1, Q3	0.0, 0.0	0.0, 0.0		0.0, 0.0	
Range	(-15.0-25.0)	(-45.0-5.0)		(-45.0-25.0)	
Difference (95% CI)			4.9 (-0.2, 10)		
(report generated on 07MAR2017)					
¹ Unequal Variance T-Test					

Barthel ADL Index Categorical Change from Baseline					
	SRS (N=27)	WBRT (N=27)		Total (N=54)	p value
Barthel ADL Index: 3-Months					0.0340 ¹
Missing	1	0		1	
Stable	22 (84.6%)	27 (100.0%)		49 (92.5%)	
At least 10% improvement	4 (15.4%)	0 (0.0%)		4 (7.5%)	
Difference (95% CI)*			15.4 (5.8, 25)		
Barthel ADL Index: 6-Months					0.1298 ¹
Missing	1	1		2	
At least 10% drop	0 (0.0%)	1 (3.8%)		1 (1.9%)	
Stable	23 (88.5%)	25 (96.2%)		48 (92.3%)	
At least 10% improvement	3 (11.5%)	0 (0.0%)		3 (5.8%)	
Difference (95% CI)*			11.5 (3, 20.1)		
Barthel ADL Index: 9-Months					0.0407 ¹
Missing	3	0		3	
At least 10% drop	0 (0.0%)	2 (7.4%)		2 (3.9%)	
Stable	20 (83.3%)	25 (92.6%)		45 (88.2%)	
At least 10% improvement	4 (16.7%)	0 (0.0%)		4 (7.8%)	
Difference (95% CI)*			16.7 (6.7, 26.6)		
Barthel ADL Index: 12-Months					0.1246 ¹
Missing	1	4		5	
At least 10% drop	1 (3.8%)	2 (8.7%)		3 (6.1%)	
Stable	21 (80.8%)	21 (91.3%)		42 (85.7%)	
At least 10% improvement	4 (15.4%)	0 (0.0%)		4 (8.2%)	
Difference (95% CI)*			15.4 (5.8, 25)		
(report generated on 07MAR2017)					
¹ Chi-Square					
* difference in proportion in the last category (At least 10% improvement)					

Overall QOL Uniscale Change from Baseline					
	SRS (N=27)	WBRT (N=27)		Total (N=54)	p value
Overall QOL Uniscale: 3-Months					0.0836 ¹
N	27	26		53	
Mean (SD)	10.7 (28.1)	-1.9 (24.0)		4.5 (26.7)	
Median	0.0	-5.0		0.0	
Q1, Q3	0.0, 30.0	-20.0, 10.0		-10.0, 20.0	
Range	(-50.0-80.0)	(-40.0-60.0)		(-50.0-80.0)	
Difference (95% CI)			12.6 (-1.5, 26.7)		
Overall QOL Uniscale: 6-Months					0.3686 ¹
N	27	25		52	
Mean (SD)	10.4 (33.5)	3.2 (22.9)		6.9 (28.8)	
Median	10.0	0.0		0.0	
Q1, Q3	0.0, 20.0	-10.0, 20.0		-10.0, 20.0	
Range	(-80.0-100.0)	(-30.0-60.0)		(-80.0-100.0)	
Difference (95% CI)			7.2 (-8.3, 22.7)		
Overall QOL Uniscale: 9-Months					0.1618 ¹
N	24	26		50	
Mean (SD)	9.2 (26.0)	-1.5 (27.2)		3.6 (26.9)	
Median	0.0	0.0		0.0	
Q1, Q3	-10.0, 20.0	-20.0, 10.0		-10.0, 20.0	
Range	(-30.0-90.0)	(-60.0-80.0)		(-60.0-90.0)	
Difference (95% CI)			10.7 (-4, 25.4)		
Overall QOL Uniscale: 12-Months					0.6476 ¹
N	25	22		47	
Mean (SD)	2.0 (22.5)	-1.4 (27.0)		0.4 (24.5)	
Median	0.0	-5.0		0.0	
Q1, Q3	-10.0, 10.0	-10.0, 10.0		-10.0, 10.0	
Range	(-40.0-60.0)	(-70.0-70.0)		(-70.0-70.0)	
Difference (95% CI)			3.4 (-10.9, 17.7)		
(report generated on 07MAR2017)					
¹ Unequal Variance T-Test					

Overall QOL Uniscale Categorical Change from Baseline					
	SRS (N=27)	WBRT (N=27)		Total (N=54)	p value
Overall QOL Uniscale: 3-Months					0.0315 ¹
At least 10% drop	5 (18.5%)	14 (51.9%)		19 (35.2%)	
Stable	9 (33.3%)	4 (14.8%)		13 (24.1%)	
At least 10% improvement	13 (48.1%)	9 (33.3%)		22 (40.7%)	
Difference (95% CI)*			14.8 (-3.5, 33.1)		
Overall QOL Uniscale: 6-Months					0.1682 ¹
Missing	0	1		1	
At least 10% drop	5 (18.5%)	11 (42.3%)		16 (30.2%)	
Stable	7 (25.9%)	5 (19.2%)		12 (22.6%)	
At least 10% improvement	15 (55.6%)	10 (38.5%)		25 (47.2%)	
Difference (95% CI)*			17.1 (-1.5, 35.6)		
Overall QOL Uniscale: 9-Months					0.3827 ¹
Missing	3	0		3	
At least 10% drop	7 (29.2%)	13 (48.1%)		20 (39.2%)	
Stable	6 (25.0%)	5 (18.5%)		11 (21.6%)	
At least 10% improvement	11 (45.8%)	9 (33.3%)		20 (39.2%)	
Difference (95% CI)*			12.5 (-5.8, 30.8)		
Overall QOL Uniscale: 12-Months					0.2578 ¹
Missing	2	4		6	
At least 10% drop	8 (32.0%)	12 (52.2%)		20 (41.7%)	
Stable	9 (36.0%)	4 (17.4%)		13 (27.1%)	
At least 10% improvement	8 (32.0%)	7 (30.4%)		15 (31.3%)	
Difference (95% CI)*			1.6 (-15.9, 19)		
(report generated on 07MAR2017)					
¹ Chi-Square					
* difference in proportion in the last category (At least 10% improvement)					

Level of Fatigue Uniscale Change from Baseline					
	SRS (N=27)	WBRT (N=27)		Total (N=54)	p value
Level of Fatigue Uniscale: 3-Months					
N	27	26		53	
Mean (SD)	5.6 (25.9)	-15.4 (28.6)		-4.7 (29.0)	
Median	0.0	-10.0		0.0	
Q1, Q3	-10.0, 30.0	-40.0, 0.0		-30.0, 10.0	
Range	(-30.0-70.0)	(-60.0-60.0)		(-60.0-70.0)	
Difference (95% CI)			21 (6.3, 35.7)		
Level of Fatigue Uniscale: 6-Months					
N	27	25		52	0.5751 ¹
Mean (SD)	0.7 (27.6)	-4.0 (32.5)		-1.5 (29.9)	
Median	0.0	0.0		0.0	
Q1, Q3	-20.0, 20.0	-30.0, 10.0		-20.0, 10.0	
Range	(-40.0-80.0)	(-70.0-70.0)		(-70.0-80.0)	
Difference (95% CI)			4.7 (-11.8, 21.2)		
Level of Fatigue Uniscale: 9-Months					
N	24	26		50	0.5758 ¹
Mean (SD)	-1.3 (29.2)	3.1 (24.6)		1.0 (26.7)	
Median	-5.0	0.0		0.0	
Q1, Q3	-20.0, 20.0	-10.0, 20.0		-20.0, 20.0	
Range	(-50.0-80.0)	(-40.0-70.0)		(-50.0-80.0)	
Difference (95% CI)			-4.4 (-19.4, 10.6)		
Level of Fatigue Uniscale: 12-Months					
N	25	22		47	0.8695 ¹
Mean (SD)	-4.0 (22.0)	-5.5 (35.7)		-4.7 (28.9)	
Median	0.0	5.0		0.0	
Q1, Q3	-20.0, 10.0	-40.0, 20.0		-20.0, 20.0	
Range	(-40.0-40.0)	(-70.0-60.0)		(-70.0-60.0)	
Difference (95% CI)			1.5 (-15.7, 18.7)		
(report generated on 07MAR2017)					
¹ Unequal Variance T-Test					

Level of Fatigue Uniscale Categorical Change from Baseline					
	SRS (N=27)	WBRT (N=27)		Total (N=54)	p value
Level of Fatigue Uniscale: 3-Months					0.0481 ¹
At least 10% drop	9 (33.3%)	18 (66.7%)		27 (50.0%)	
Stable	7 (25.9%)	4 (14.8%)		11 (20.4%)	
At least 10% improvement	11 (40.7%)	5 (18.5%)		16 (29.6%)	
Difference (95% CI)*			22.2 (5.5, 38.9)		
Level of Fatigue Uniscale: 6-Months					0.9833 ¹
Missing	0	1		1	
At least 10% drop	12 (44.4%)	12 (46.2%)		24 (45.3%)	
Stable	5 (18.5%)	5 (19.2%)		10 (18.9%)	
At least 10% improvement	10 (37.0%)	9 (34.6%)		19 (35.8%)	
Difference (95% CI)*			2.4 (-15.7, 20.5)		
Level of Fatigue Uniscale: 9-Months					0.6434 ¹
Missing	3	0		3	
At least 10% drop	12 (50.0%)	10 (37.0%)		22 (43.1%)	
Stable	4 (16.7%)	6 (22.2%)		10 (19.6%)	
At least 10% improvement	8 (33.3%)	11 (40.7%)		19 (37.3%)	
Difference (95% CI)*			-7.4 (-25.6, 10.8)		
Level of Fatigue Uniscale: 12-Months					0.1093 ¹
Missing	2	4		6	
At least 10% drop	12 (48.0%)	11 (47.8%)		23 (47.9%)	
Stable	6 (24.0%)	1 (4.3%)		7 (14.6%)	
At least 10% improvement	7 (28.0%)	11 (47.8%)		18 (37.5%)	
Difference (95% CI)*			-19.8 (-37.7, -1.9)		

(report generated on 07MAR2017)

¹Chi-Square

* difference in proportion in the last category (At least 10% improvement)

LASA: Overall QOL Change from Baseline					
	SRS (N=27)	WBRT (N=27)		Total (N=54)	p value
LASA: Overall QOL: 3-Months					0.0225 ¹
N	27	24		51	
Mean (SD)	6.3 (24.7)	-7.9 (18.2)		-0.4 (22.8)	
Median	0.0	-5.0		0.0	
Q1, Q3	-10.0, 20.0	-15.0, 0.0		-10.0, 10.0	
Range	(-40.0-80.0)	(-50.0-20.0)		(-50.0-80.0)	
Difference (95% CI)			14.2 (2.4, 26)		
LASA: Overall QOL: 6-Months					0.2281 ¹
N	26	25		51	
Mean (SD)	9.2 (25.8)	0.4 (25.9)		4.9 (26.0)	
Median	5.0	0.0		0.0	
Q1, Q3	0.0, 20.0	-10.0, 10.0		-10.0, 20.0	
Range	(-30.0-100.0)	(-60.0-60.0)		(-60.0-100.0)	
Difference (95% CI)			8.8 (-5.4, 23)		
LASA: Overall QOL: 9-Months					0.7846 ¹
N	23	25		48	
Mean (SD)	1.3 (29.1)	-0.8 (23.3)		0.2 (26.0)	
Median	0.0	0.0		0.0	
Q1, Q3	-20.0, 20.0	-10.0, 10.0		-20.0, 10.0	
Range	(-40.0-90.0)	(-60.0-60.0)		(-60.0-90.0)	
Difference (95% CI)			2.1 (-12.9, 17.1)		
LASA: Overall QOL: 12-Months					0.9631 ¹
N	25	23		48	
Mean (SD)	-1.2 (23.5)	-0.9 (25.6)		-1.0 (24.3)	
Median	0.0	0.0		0.0	
Q1, Q3	-10.0, 10.0	-10.0, 10.0		-10.0, 10.0	
Range	(-50.0-60.0)	(-70.0-50.0)		(-70.0-60.0)	
Difference (95% CI)			-0.3 (-14.2, 13.6)		
(report generated on 07MAR2017)					
¹ Unequal Variance T-Test					

LASA: Overall QOL Categorical Change from Baseline					
	SRS (N=27)	WBRT (N=27)		Total (N=54)	p value
LASA: Overall QOL: 3-Months					0.0457 ¹
Missing	0	2		2	
At least 10% drop	8 (29.6%)	13 (52.0%)		21 (40.4%)	
Stable	6 (22.2%)	8 (32.0%)		14 (26.9%)	
At least 10% improvement	13 (48.1%)	4 (16.0%)		17 (32.7%)	
Difference (95% CI)*			32.1 (15.6, 48.7)		
LASA: Overall QOL: 6-Months					0.2165 ¹
Missing	1	1		2	
At least 10% drop	6 (23.1%)	12 (46.2%)		18 (34.6%)	
Stable	7 (26.9%)	5 (19.2%)		12 (23.1%)	
At least 10% improvement	13 (50.0%)	9 (34.6%)		22 (42.3%)	
Difference (95% CI)*			15.4 (-3, 33.8)		
LASA: Overall QOL: 9-Months					0.9976 ¹
Missing	4	1		5	
At least 10% drop	9 (39.1%)	10 (38.5%)		19 (38.8%)	
Stable	6 (26.1%)	7 (26.9%)		13 (26.5%)	
At least 10% improvement	8 (34.8%)	9 (34.6%)		17 (34.7%)	
Difference (95% CI)*			0.2 (-17.8, 18.1)		
LASA: Overall QOL: 12-Months					0.8725 ¹
Missing	2	4		6	
At least 10% drop	10 (40.0%)	8 (34.8%)		18 (37.5%)	
Stable	8 (32.0%)	7 (30.4%)		15 (31.3%)	
At least 10% improvement	7 (28.0%)	8 (34.8%)		15 (31.3%)	
Difference (95% CI)*			-6.8 (-24.2, 10.7)		
(report generated on 07MAR2017)					
¹ Chi-Square					
* difference in proportion in the last category (At least 10% improvement)					

**LASA: Overall Mental Well-Being
Change from Baseline**

	SRS (N=27)	WBRT (N=27)		Total (N=54)	p value
LASA: Overall Mental Well-Being: 3-Months					0.2094 ¹
N	27	24		51	
Mean (SD)	2.2 (15.8)	-5.0 (23.4)		-1.2 (19.9)	
Median	0.0	0.0		0.0	
Q1, Q3	-10.0, 10.0	-20.0, 10.0		-10.0, 10.0	
Range	(-30.0-40.0)	(-70.0-40.0)		(-70.0-40.0)	
Difference (95% CI)			7.2 (-3.9, 18.3)		
LASA: Overall Mental Well-Being: 6-Months					0.3447 ¹
N	26	25		51	
Mean (SD)	4.2 (14.5)	-0.8 (22.2)		1.8 (18.6)	
Median	0.0	0.0		0.0	
Q1, Q3	0.0, 10.0	-10.0, 10.0		-10.0, 10.0	
Range	(-30.0-40.0)	(-40.0-60.0)		(-40.0-60.0)	
Difference (95% CI)			5 (-5.3, 15.3)		
LASA: Overall Mental Well-Being: 9-Months					0.3349 ¹
N	23	25		48	
Mean (SD)	-5.7 (22.9)	0.8 (22.9)		-2.3 (22.9)	
Median	0.0	0.0		0.0	
Q1, Q3	-10.0, 0.0	-10.0, 10.0		-10.0, 5.0	
Range	(-60.0-30.0)	(-40.0-60.0)		(-60.0-60.0)	
Difference (95% CI)			-6.5 (-19.5, 6.5)		
LASA: Overall Mental Well-Being: 12-Months					0.9484 ¹
N	25	23		48	
Mean (SD)	-6.0 (23.5)	-6.5 (31.1)		-6.3 (27.1)	
Median	0.0	0.0		0.0	
Q1, Q3	-10.0, 10.0	-20.0, 10.0		-15.0, 10.0	
Range	(-70.0-40.0)	(-90.0-50.0)		(-90.0-50.0)	
Difference (95% CI)			0.5 (-15.2, 16.2)		

(report generated on 07MAR2017)

¹Unequal Variance T-Test

LASA: Overall Mental Well-Being Categorical Change from Baseline					
	SRS (N=27)	WBRT (N=27)		Total (N=54)	p value
LASA: Overall Mental Well-Being: 3-Months					
Missing	0	2		2	
At least 10% drop	7 (25.9%)	11 (44.0%)		18 (34.6%)	
Stable	11 (40.7%)	7 (28.0%)		18 (34.6%)	
At least 10% improvement	9 (33.3%)	7 (28.0%)		16 (30.8%)	
Difference (95% CI)*			5.3 (-12, 22.7)		
LASA: Overall Mental Well-Being: 6-Months					
Missing	1	1		2	
At least 10% drop	5 (19.2%)	11 (42.3%)		16 (30.8%)	
Stable	10 (38.5%)	8 (30.8%)		18 (34.6%)	
At least 10% improvement	11 (42.3%)	7 (26.9%)		18 (34.6%)	
Difference (95% CI)*			15.4 (-2.3, 33.1)		
LASA: Overall Mental Well-Being: 9-Months					
Missing	4	1		5	
At least 10% drop	7 (30.4%)	13 (50.0%)		20 (40.8%)	
Stable	11 (47.8%)	6 (23.1%)		17 (34.7%)	
At least 10% improvement	5 (21.7%)	7 (26.9%)		12 (24.5%)	
Difference (95% CI)*			-5.2 (-21.3, 11)		
LASA: Overall Mental Well-Being: 12-Months					
Missing	2	4		6	
At least 10% drop	11 (44.0%)	11 (47.8%)		22 (45.8%)	
Stable	7 (28.0%)	6 (26.1%)		13 (27.1%)	
At least 10% improvement	7 (28.0%)	6 (26.1%)		13 (27.1%)	
Difference (95% CI)*			1.9 (-14.8, 18.7)		
(report generated on 07MAR2017)					
¹ Chi-Square					
* difference in proportion in the last category (At least 10% improvement)					

**LASA: Overall Physical Well-Being
Change from Baseline**

	SRS (N=27)	WBRT (N=27)		Total (N=54)	p value
LASA: Overall Physical Well-Being: 3-Months					
N	27	24		51	
Mean (SD)	3.3 (25.9)	-7.5 (18.0)		-1.8 (23.0)	
Median	0.0	-10.0		0.0	
Q1, Q3	-10.0, 10.0	-15.0, 0.0		-10.0, 10.0	
Range	(-40.0-80.0)	(-50.0-30.0)		(-50.0-80.0)	
Difference (95% CI)			10.8 (-1.3, 22.9)		
LASA: Overall Physical Well-Being: 6-Months					
N	26	25		51	0.7201 ¹
Mean (SD)	3.1 (24.9)	0.8 (20.0)		2.0 (22.5)	
Median	0.0	0.0		0.0	
Q1, Q3	-10.0, 10.0	-10.0, 10.0		-10.0, 10.0	
Range	(-40.0-70.0)	(-50.0-40.0)		(-50.0-70.0)	
Difference (95% CI)			2.3 (-10.1, 14.7)		
LASA: Overall Physical Well-Being: 9-Months					
N	23	25		48	0.6993 ¹
Mean (SD)	-3.0 (23.0)	-0.4 (24.1)		-1.7 (23.4)	
Median	0.0	0.0		0.0	
Q1, Q3	-20.0, 10.0	-10.0, 10.0		-10.0, 10.0	
Range	(-50.0-60.0)	(-50.0-50.0)		(-50.0-60.0)	
Difference (95% CI)			-2.6 (-15.9, 10.7)		
LASA: Overall Physical Well-Being: 12-Months					
N	25	23		48	0.1128 ¹
Mean (SD)	-6.8 (23.6)	3.0 (18.4)		-2.1 (21.6)	
Median	0.0	0.0		0.0	
Q1, Q3	-20.0, 0.0	-10.0, 10.0		-10.0, 10.0	
Range	(-50.0-60.0)	(-30.0-40.0)		(-50.0-60.0)	
Difference (95% CI)			-9.8 (-21.7, 2.1)		

(report generated on 07MAR2017)

¹Unequal Variance T-Test

LASA: Overall Physical Well-Being Categorical Change from Baseline					
	SRS (N=27)	WBRT (N=27)		Total (N=54)	p value
LASA: Overall Physical Well-Being: 3-Months					
Missing	0	2		2	0.0377 ¹
At least 10% drop	8 (29.6%)	16 (64.0%)		24 (46.2%)	
Stable	6 (22.2%)	4 (16.0%)		10 (19.2%)	
At least 10% improvement	13 (48.1%)	5 (20.0%)		18 (34.6%)	
Difference (95% CI)*			28.1 (11.1, 45.2)		
LASA: Overall Physical Well-Being: 6-Months					
Missing	1	1		2	0.9482 ¹
At least 10% drop	8 (30.8%)	9 (34.6%)		17 (32.7%)	
Stable	7 (26.9%)	7 (26.9%)		14 (26.9%)	
At least 10% improvement	11 (42.3%)	10 (38.5%)		21 (40.4%)	
Difference (95% CI)*			3.8 (-14.6, 22.3)		
LASA: Overall Physical Well-Being: 9-Months					
Missing	4	1		5	0.4660 ¹
At least 10% drop	9 (39.1%)	13 (50.0%)		22 (44.9%)	
Stable	8 (34.8%)	5 (19.2%)		13 (26.5%)	
At least 10% improvement	6 (26.1%)	8 (30.8%)		14 (28.6%)	
Difference (95% CI)*			-4.7 (-21.7, 12.3)		
LASA: Overall Physical Well-Being: 12-Months					
Missing	2	4		6	0.6053 ¹
At least 10% drop	12 (48.0%)	8 (34.8%)		20 (41.7%)	
Stable	7 (28.0%)	7 (30.4%)		14 (29.2%)	
At least 10% improvement	6 (24.0%)	8 (34.8%)		14 (29.2%)	
Difference (95% CI)*			-10.8 (-27.8, 6.3)		
(report generated on 07MAR2017)					
¹ Chi-Square					
* difference in proportion in the last category (At least 10% improvement)					

**LASA: Overall Emotional Well-Being
Change from Baseline**

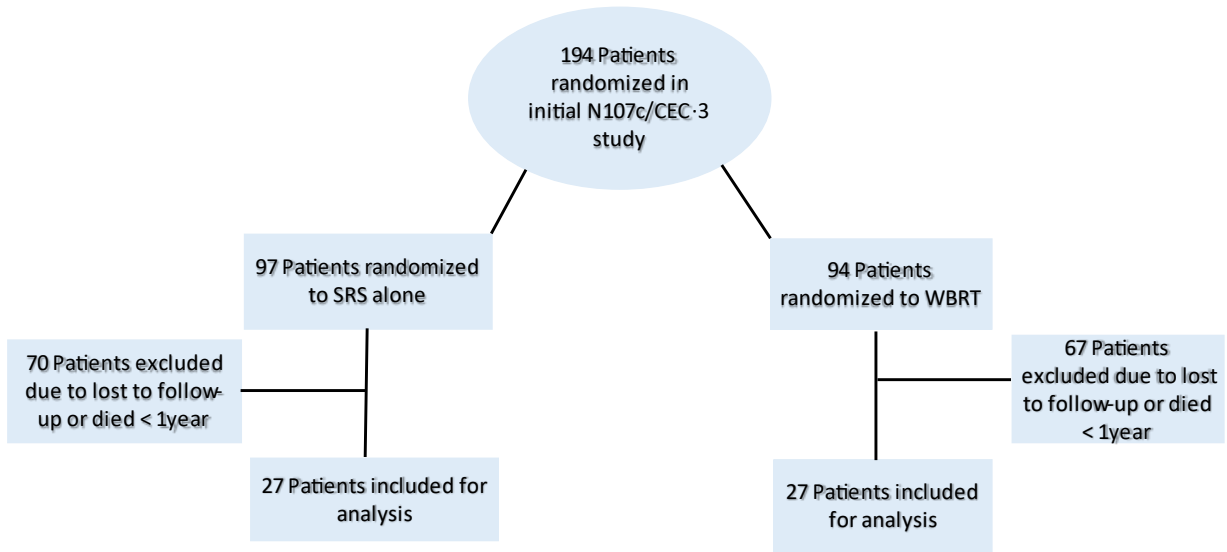
	SRS (N=27)	WBRT (N=27)		Total (N=54)	p value
LASA: Overall Emotional Well-Being: 3-Months					
N	27	24		51	
Mean (SD)	9.3 (28.7)	-12.5 (29.4)		-1.0 (30.7)	
Median	10.0	-10.0		0.0	
Q1, Q3	-10.0, 20.0	-30.0, 10.0		-20.0, 10.0	
Range	(-50.0-100.0)	(-80.0-40.0)		(-80.0-100.0)	
Difference (95% CI)			21.8 (5.8, 37.8)		
LASA: Overall Emotional Well-Being: 6-Months					
N	26	25		51	0.9566 ¹
Mean (SD)	-1.9 (28.1)	-2.4 (33.7)		-2.2 (30.7)	
Median	-5.0	-10.0		-10.0	
Q1, Q3	-20.0, 10.0	-30.0, 20.0		-20.0, 10.0	
Range	(-40.0-90.0)	(-60.0-70.0)		(-60.0-90.0)	
Difference (95% CI)			0.5 (-16.6, 17.6)		
LASA: Overall Emotional Well-Being: 9-Months					
N	23	25		48	0.1737 ¹
Mean (SD)	-1.7 (32.8)	10.0 (25.0)		4.4 (29.3)	
Median	-10.0	10.0		5.0	
Q1, Q3	-20.0, 10.0	-10.0, 20.0		-15.0, 20.0	
Range	(-70.0-90.0)	(-30.0-70.0)		(-70.0-90.0)	
Difference (95% CI)			-11.7 (-28.3, 4.9)		
LASA: Overall Emotional Well-Being: 12-Months					
N	25	23		48	0.0790 ¹
Mean (SD)	-9.6 (26.4)	6.1 (33.3)		-2.1 (30.6)	
Median	-10.0	10.0		0.0	
Q1, Q3	-20.0, 10.0	-30.0, 30.0		-25.0, 10.0	
Range	(-60.0-40.0)	(-40.0-70.0)		(-60.0-70.0)	
Difference (95% CI)			-15.7 (-32.8, 1.4)		

(report generated on 07MAR2017)

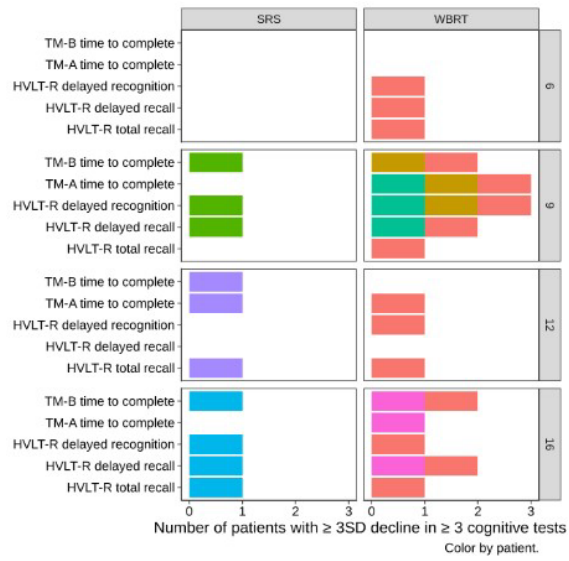
¹Unequal Variance T-Test

LASA: Overall Emotional Well-Being Categorical Change from Baseline					
	SRS (N=27)	WBRT (N=27)		Total (N=54)	p value
LASA: Overall Emotional Well-Being: 3-Months					
Missing	0	2		2	
At least 10% drop	8 (29.6%)	14 (56.0%)		22 (42.3%)	
Stable	5 (18.5%)	4 (16.0%)		9 (17.3%)	
At least 10% improvement	14 (51.9%)	7 (28.0%)		21 (40.4%)	
Difference (95% CI)*			23.9 (5.9, 41.8)		
LASA: Overall Emotional Well-Being: 6-Months					
Missing	1	1		2	
At least 10% drop	13 (50.0%)	14 (53.8%)		27 (51.9%)	
Stable	3 (11.5%)	3 (11.5%)		6 (11.5%)	
At least 10% improvement	10 (38.5%)	9 (34.6%)		19 (36.5%)	
Difference (95% CI)*			3.8 (-14.3, 22)		
LASA: Overall Emotional Well-Being: 9-Months					
Missing	4	1		5	
At least 10% drop	14 (60.9%)	9 (34.6%)		23 (46.9%)	
Stable	0 (0.0%)	2 (7.7%)		2 (4.1%)	
At least 10% improvement	9 (39.1%)	15 (57.7%)		24 (49.0%)	
Difference (95% CI)*			-18.6 (-37.1, 0)		
LASA: Overall Emotional Well-Being: 12-Months					
Missing	2	4		6	
At least 10% drop	13 (52.0%)	8 (34.8%)		21 (43.8%)	
Stable	5 (20.0%)	3 (13.0%)		8 (16.7%)	
At least 10% improvement	7 (28.0%)	12 (52.2%)		19 (39.6%)	
Difference (95% CI)*			-24.2 (-42.1, -6.3)		
(report generated on 07MAR2017)					
¹ Chi-Square					
* difference in proportion in the last category (At least 10% improvement)					

	SRS (N=27)	WBRT (N=27)	Total (N=54)	p value
Subsequent Treatment Reported				0.5796 ¹
No	12 (44.4%)	10 (37.0%)	22 (40.7%)	
Yes	15 (55.6%)	17 (63.0%)	32 (59.3%)	
Subsequent Treatment				0.1128 ¹
Missing	12	10	22	
Chemo	8 (53.3%)	9 (52.9%)	17 (53.1%)	
Chemo, SRS	0 (0.0%)	1 (5.9%)	1 (3.1%)	
Chemo, SRS, WBRT, Surgical Resection	1 (6.7%)	0 (0.0%)	1 (3.1%)	
Other	2 (13.3%)	0 (0.0%)	2 (6.3%)	
SRS	1 (6.7%)	5 (29.4%)	6 (18.8%)	
SRS, Surgical Resection	0 (0.0%)	1 (5.9%)	1 (3.1%)	
Surgical Resection	0 (0.0%)	1 (5.9%)	1 (3.1%)	
WBRT	3 (20.0%)	0 (0.0%)	3 (9.4%)	

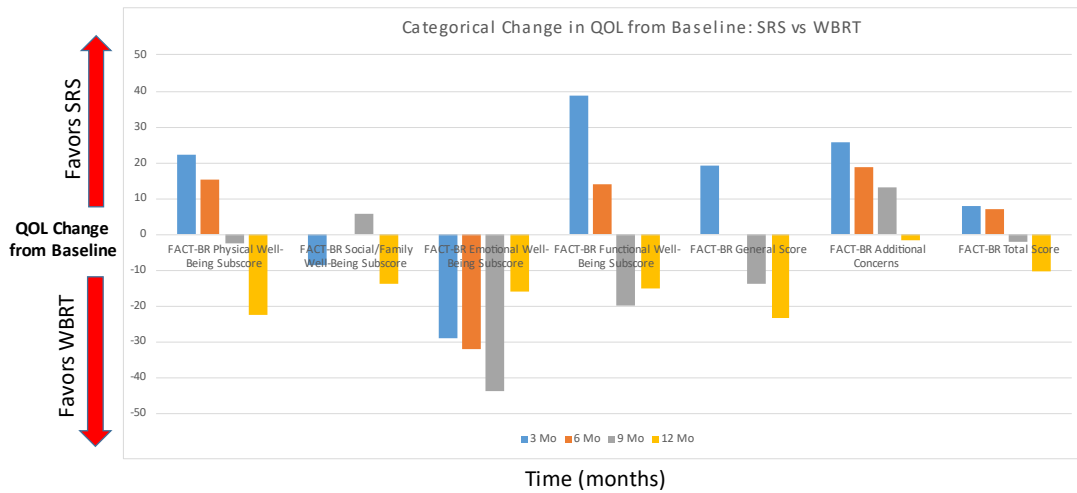


Supplemental Figure 1. Consort Diagram



Supplemental Figure 2: Number of patients with a 3 SD decline in 3 or more cognitive tests based on treatment arm .

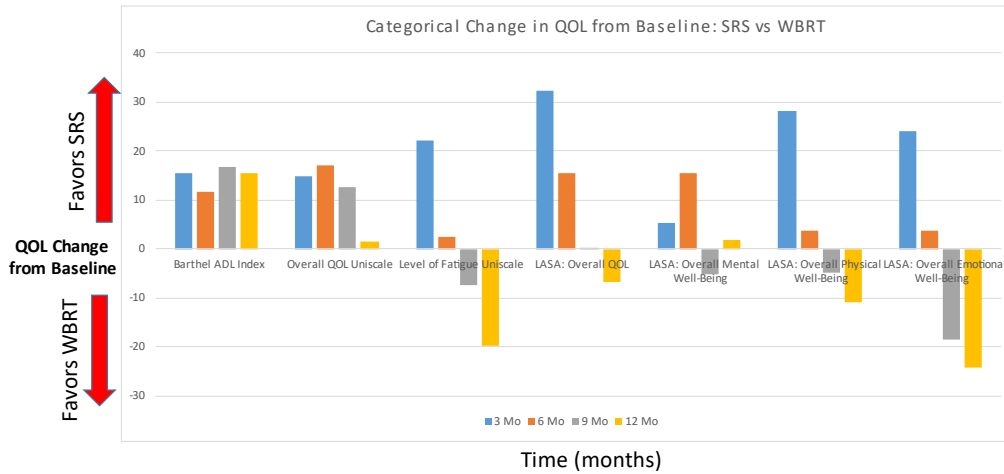
Abbreviations: HVL-R, Hopkins Verbal Learning Test -Revised; TM -A, Trail Making Test Part A; TM -B, Trail Making Test Part B; COW AT, Controlled Oral Word Association Test



Supplemental Figure 3A. Categorical Change in QOL from baseline comparing SRS vs WBRT.

(Numbers above 0 indicate % difference in favor of SRS alone)

Abbreviations: FACT -Br, Functional Assessment of Cancer Therapy -Brain; Barthel ADL Index, Barthel Index of Activities of Daily Living; LASA, Linear Analog Self Assessments; QOL, quality of life.



Supplemental Figure 3B. Categorical Change from Baseline for QOL and Functional Independence Comparing

SRS vs WBRT. (Numbers above 0 indicate % difference in favor of SRS alone)

Abbreviations: Barthel ADL Index, Barthel Index of Activities of Daily Living; LASA, Linear Analog Self Assessments; QOL, quality of life.