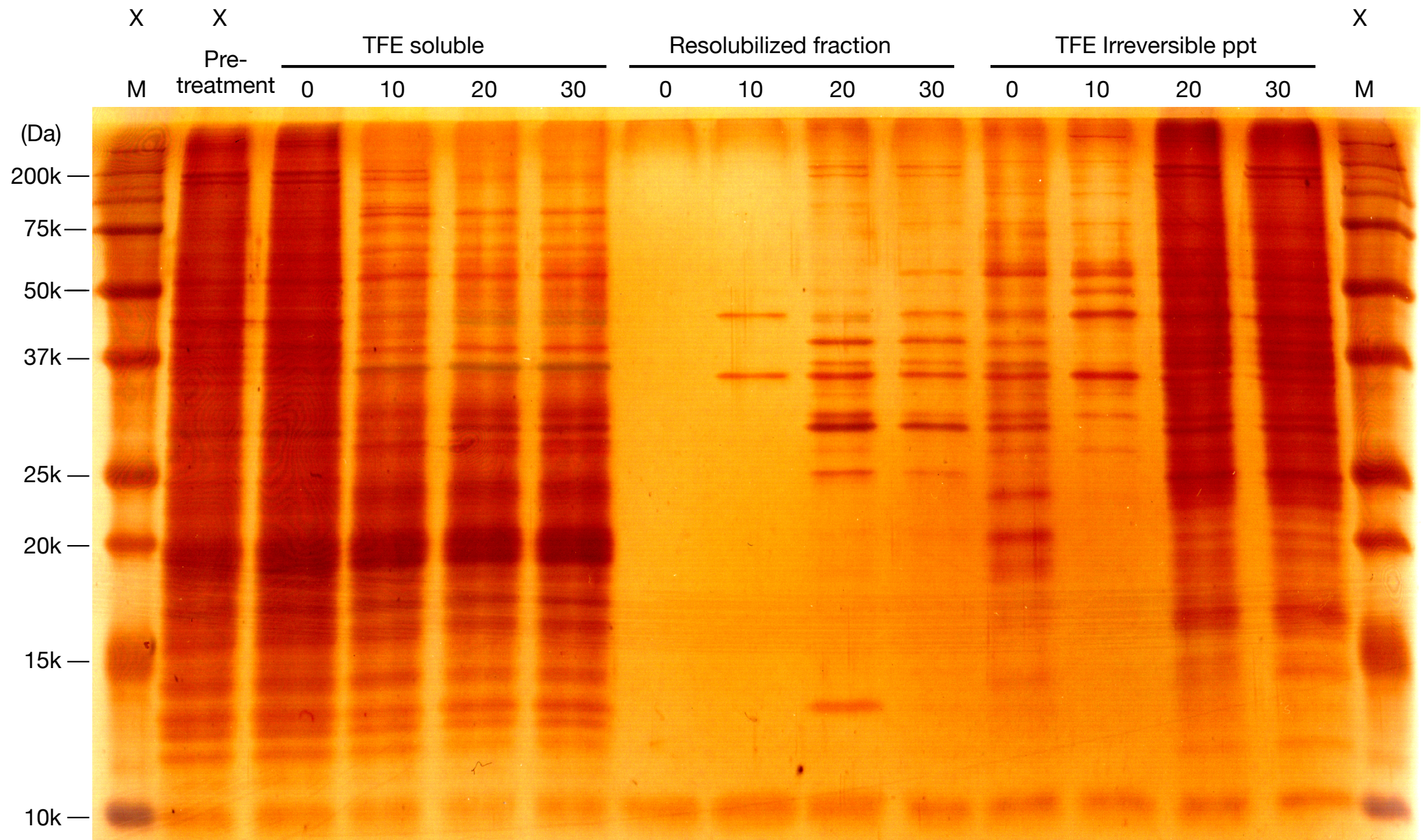


# Raw gel image for Fig 1B and S1 Fig

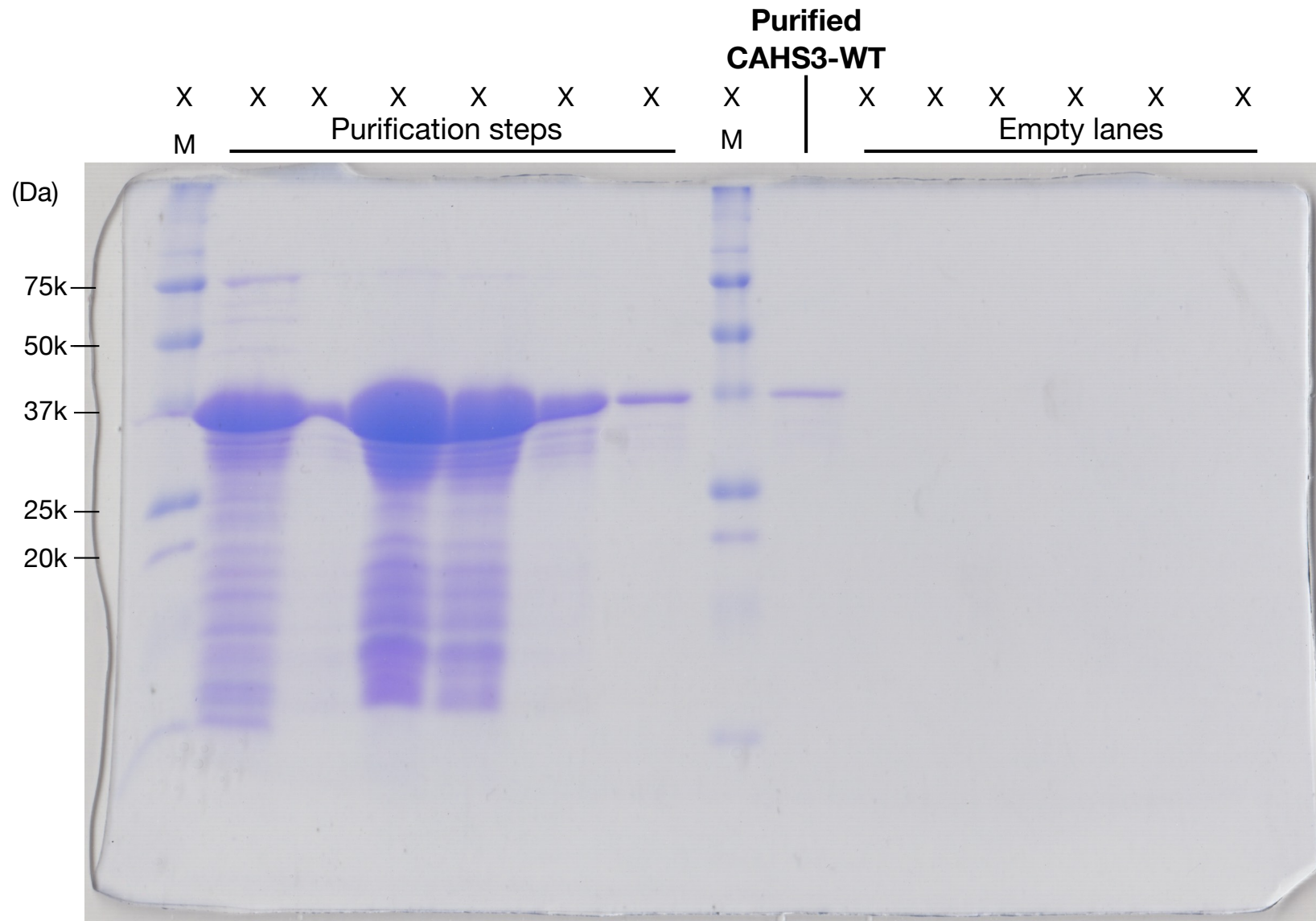


The image of the silver-stained gel was captured with CanoScan LiDE (Canon).

M indicates a molecular weight marker lane: Precision Plus Protein Standards (Bio-rad).

The numbers above lanes indicate the concentrations (%) of treated TFE.

# Raw gel image for CAHS3-WT in S21 Fig

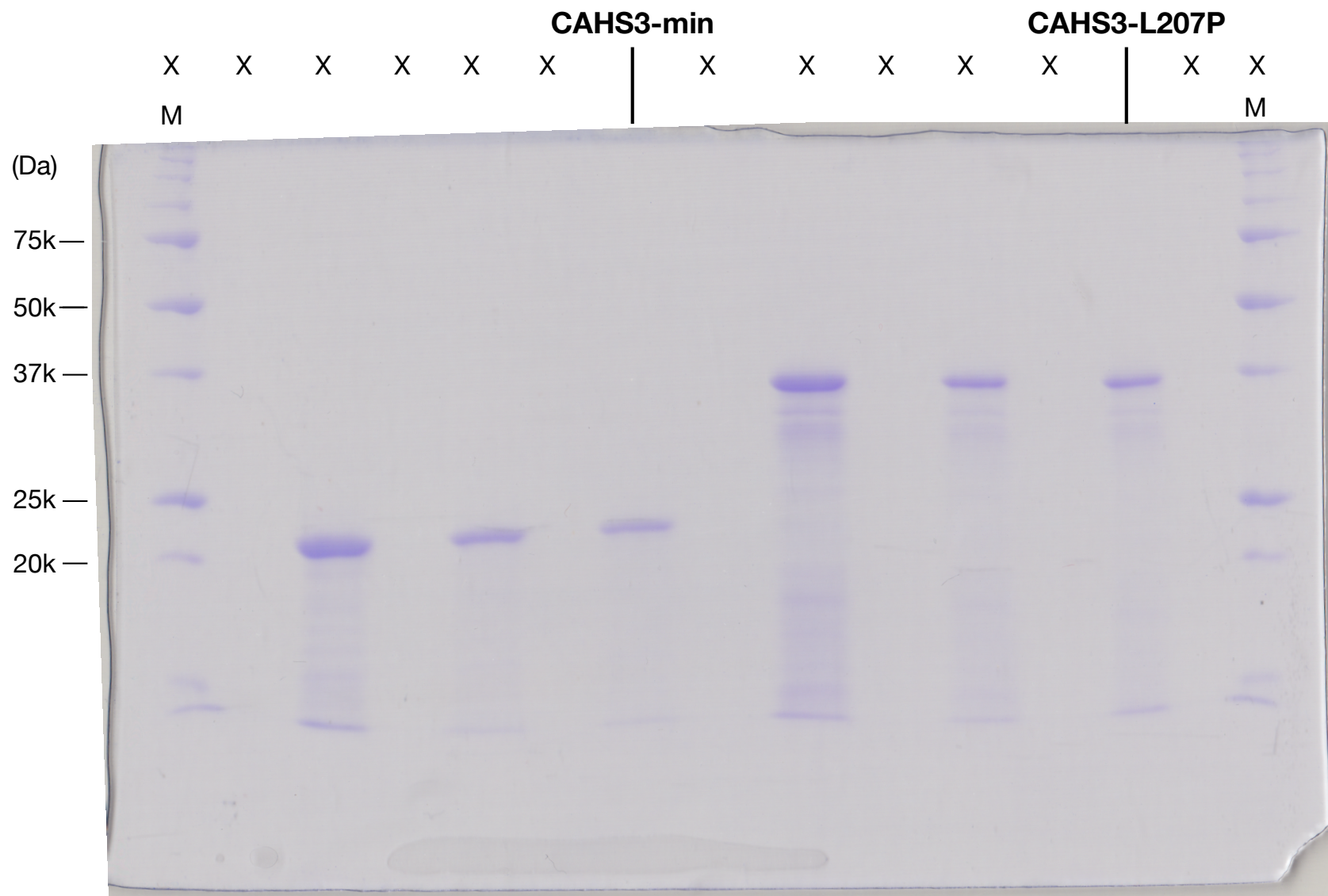


The image of the CBB-stained gel was captured with CanoScan LiDE (Canon).

M indicates a molecular weight marker lane: Precision Plus Protein Standards (Bio-rad).



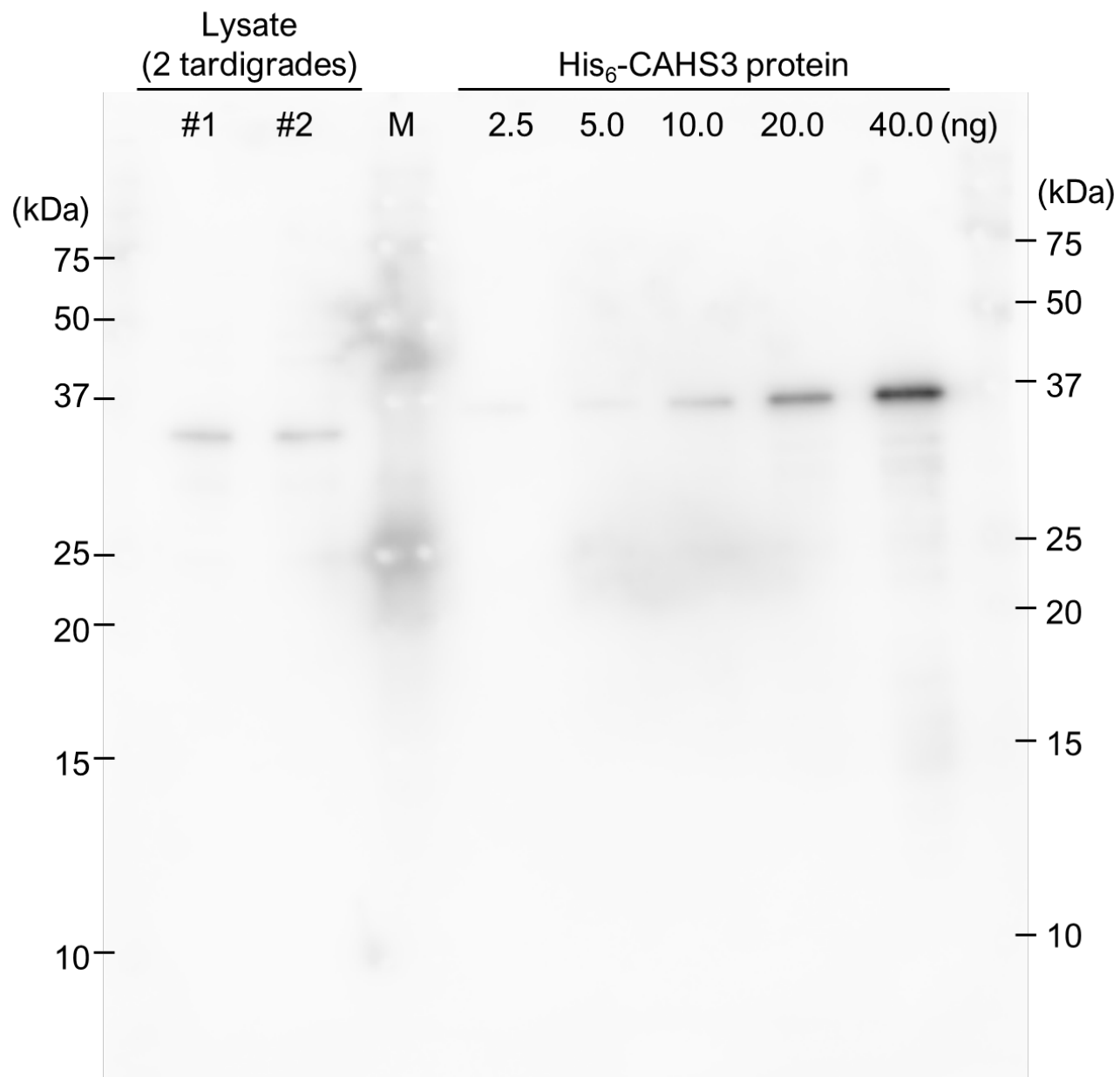
# Raw gel image for CAHS3-min and CAHS3-L207P in S21 Fig



The image of the CBB-stained gel was captured with CanoScan LiDE (Canon).

M indicates a molecular weight marker lane: Precision Plus Protein Standards (Bio-rad).

## Raw immunoblotting image for S24 Fig



The image of the immunoblotting was captured with ImageQuant LAS500 (Cytiva).  
M indicates a molecular weight marker lane: Precision Plus Protein Standards (Bio-rad).