

FIGURE E1. Flow cytometric gating strategy. Successive gating strategy used to identify cell types from sized, viable leukocytes, lymphocyte, T-cell subtypes, and programmed cell death protein 1 positivity on CD8⁺ T cells.

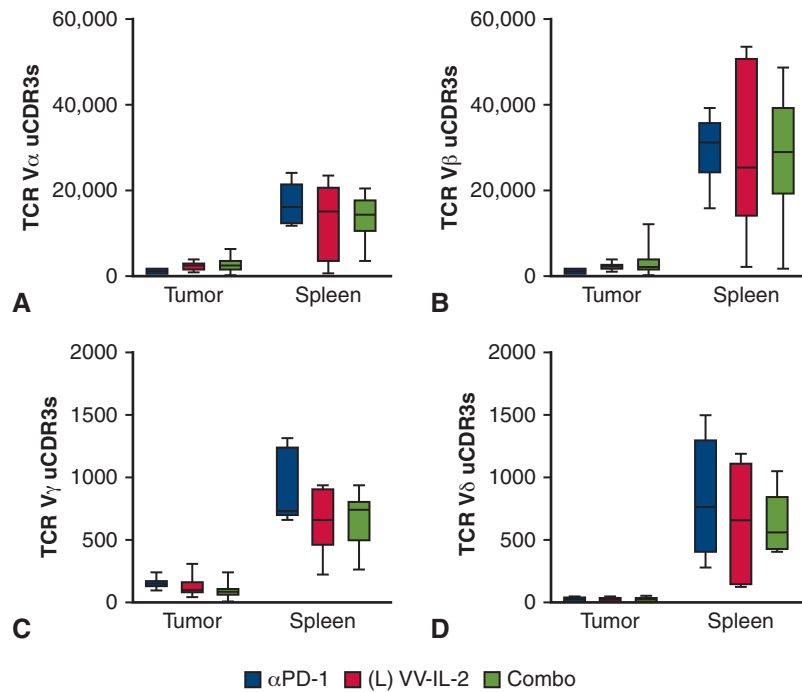


FIGURE E2. Nonsignificant change in intratumoral and splenic CDR3s with VV-IL-2 and combination treatment. Unique CDR3 mRNA expression for V α (A), V β (B), V γ (C), and V δ (D) chains in tumor and spleen from MPD mice treated with systemic anti-PD-1 alone (n = 7), intrapleural VV-IL-2 alone (n = 9), or combination anti-PD-1 and VV-IL-2 (n = 8).

THOR

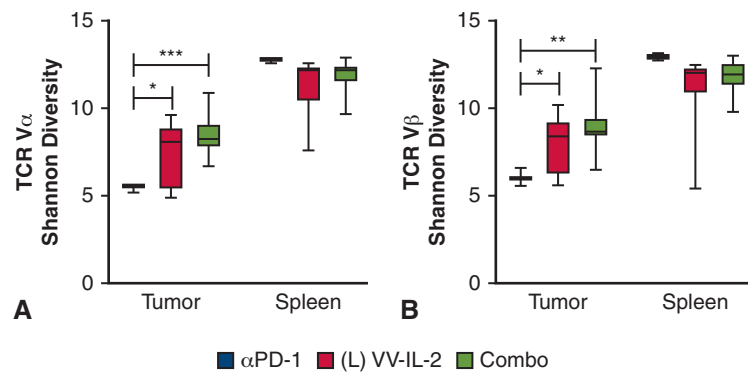


FIGURE E3. VV-IL-2 and combination treatment increase TIL Shannon diversity index. $V\alpha$ (A) and $V\beta$ (B) Shannon diversity index were assessed in tumor and spleen from MPD mice treated with systemic anti-PD-1 alone ($n = 7$), intrapleural VV-IL-2 alone ($n = 9$), or combination anti-PD-1 and VV-IL-2 ($n = 8$). P values are reported ($*P < .05$, $**P < .01$, $***P < .001$).