

Fig.S1 **MβCD plus anti-GD2 treatment inhibits tumor growth *in vivo*.** (A) Schematic of MβCD and anti-GD2 treatments. (B) Representative images of xenograft 9464D tumors with different treatments. (C) The tumors were removed for weight analysis 21 days after the beginning of treatments. (D) Tumor growth curves of subcutaneous 9464D cells with different treatments.

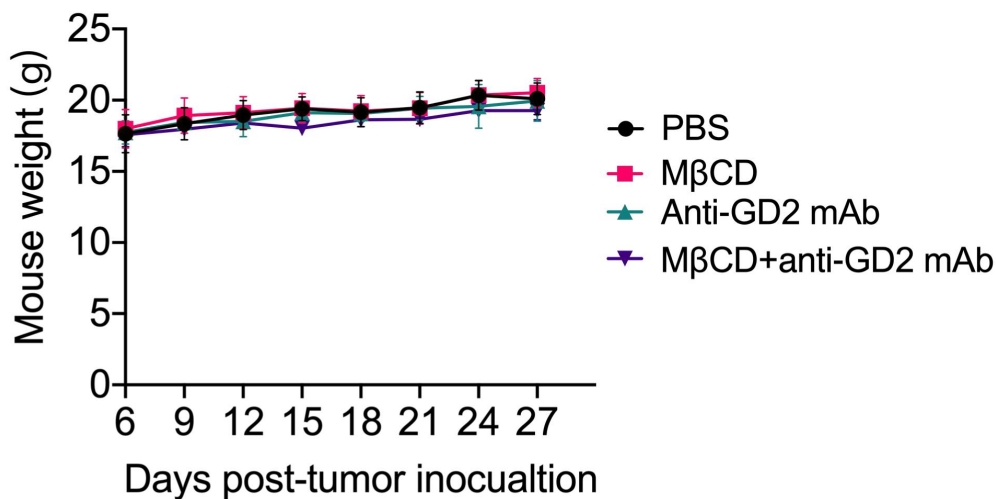


Fig.S2 **Monitoring of mouse weight during the experiment.**