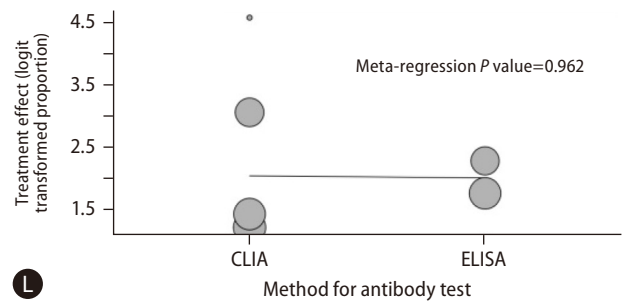
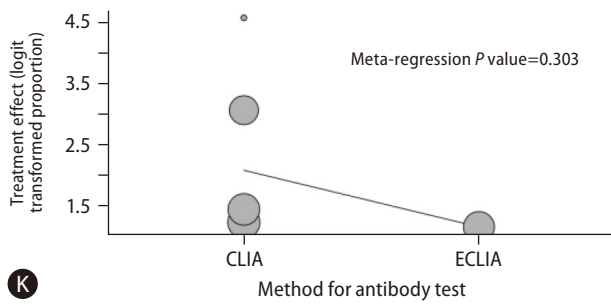
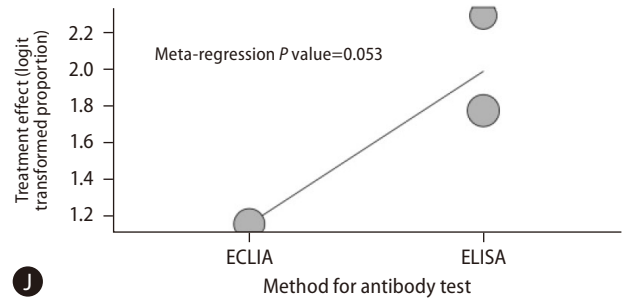
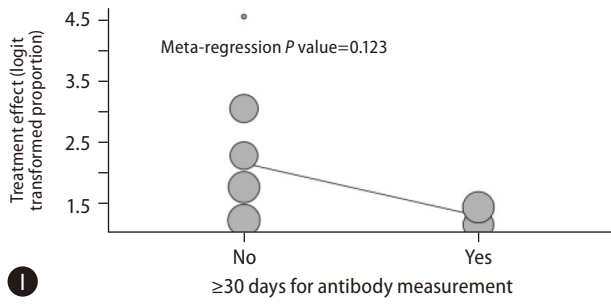


Supplementary Figure 3. Meta-regression analysis for seropositivity in chronic liver disease. Bubble plot with fixed meta-regression line of (A) region, (B) participant number, (C) age ≥ 60 , (D) etiology of liver disease, (E) cirrhosis status, (F) vaccine type, (G) vaccine platform, (H) antibody type, (I) time interval of antibody measurement from second dose of vaccination (≥ 30 days), (J) method of antibody test (ECLIA vs. ELISA), (K) method of antibody test (CLIA vs. ECLIA), (L) method of antibody test (CLIA vs. ELISA). The size of circles is proportional to weight of each study in fitted random effects meta-regression. ECLIA, electrochemiluminescence immunoassay analyzer; ELISA, enzyme-linked immunosorbent assay; CLIA, chemiluminescence immunoassays.



Supplementary Figure 3. Continued.