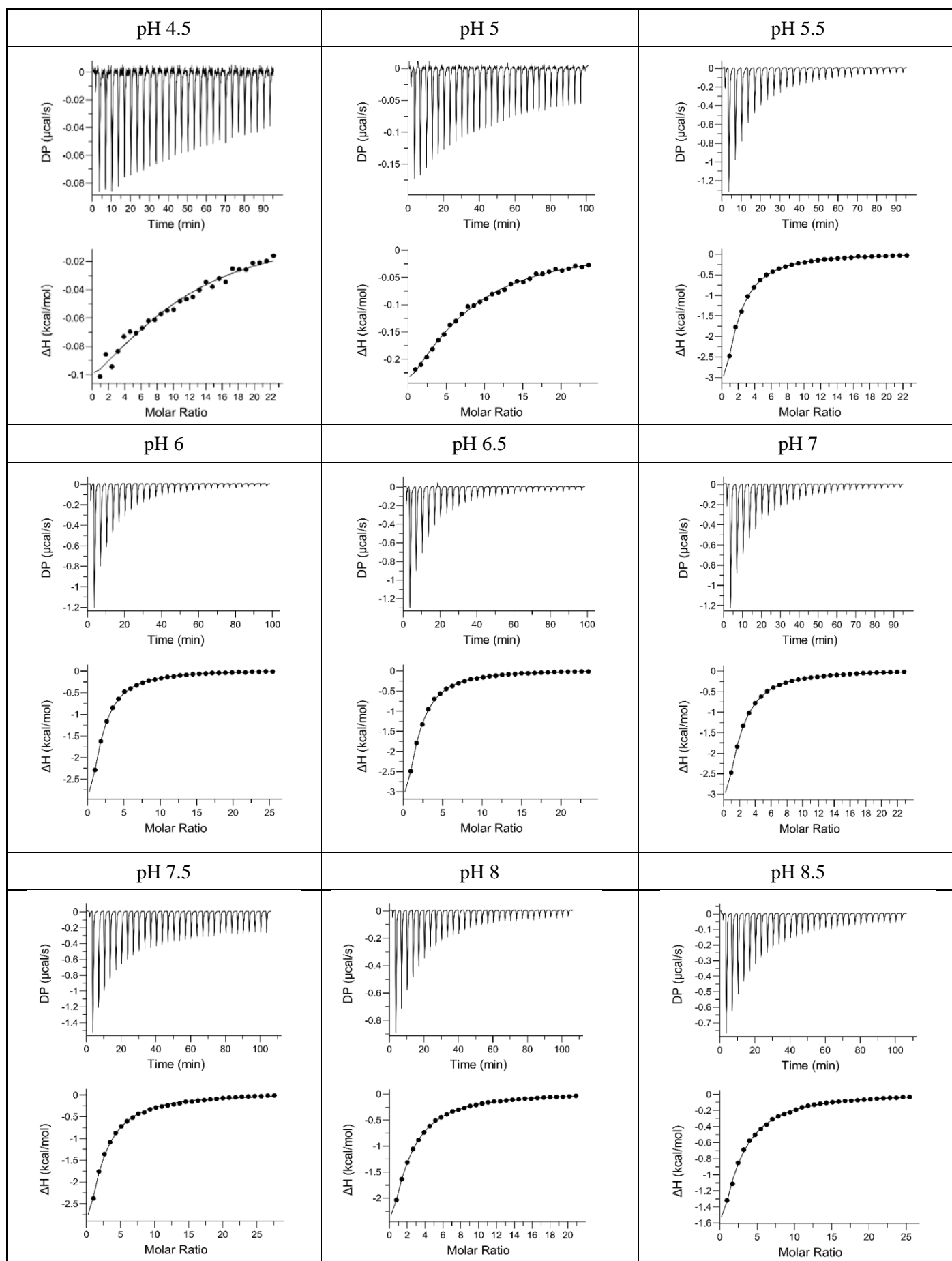
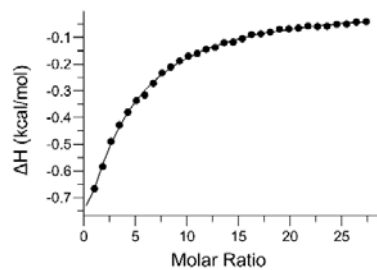
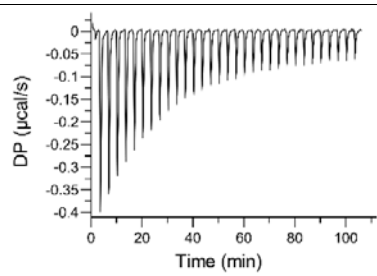


Fig S1. Microcalorimetric titrations of mono- and bimodular α/β fold ligand binding domains with different ligands at different pH.

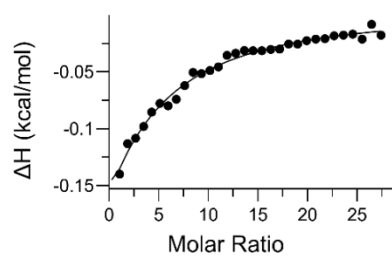
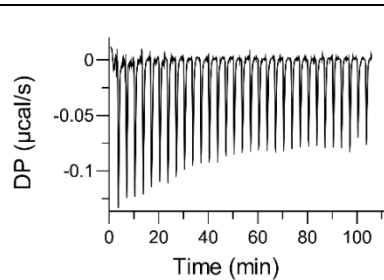
L-malate recognition by CtpM-LBD



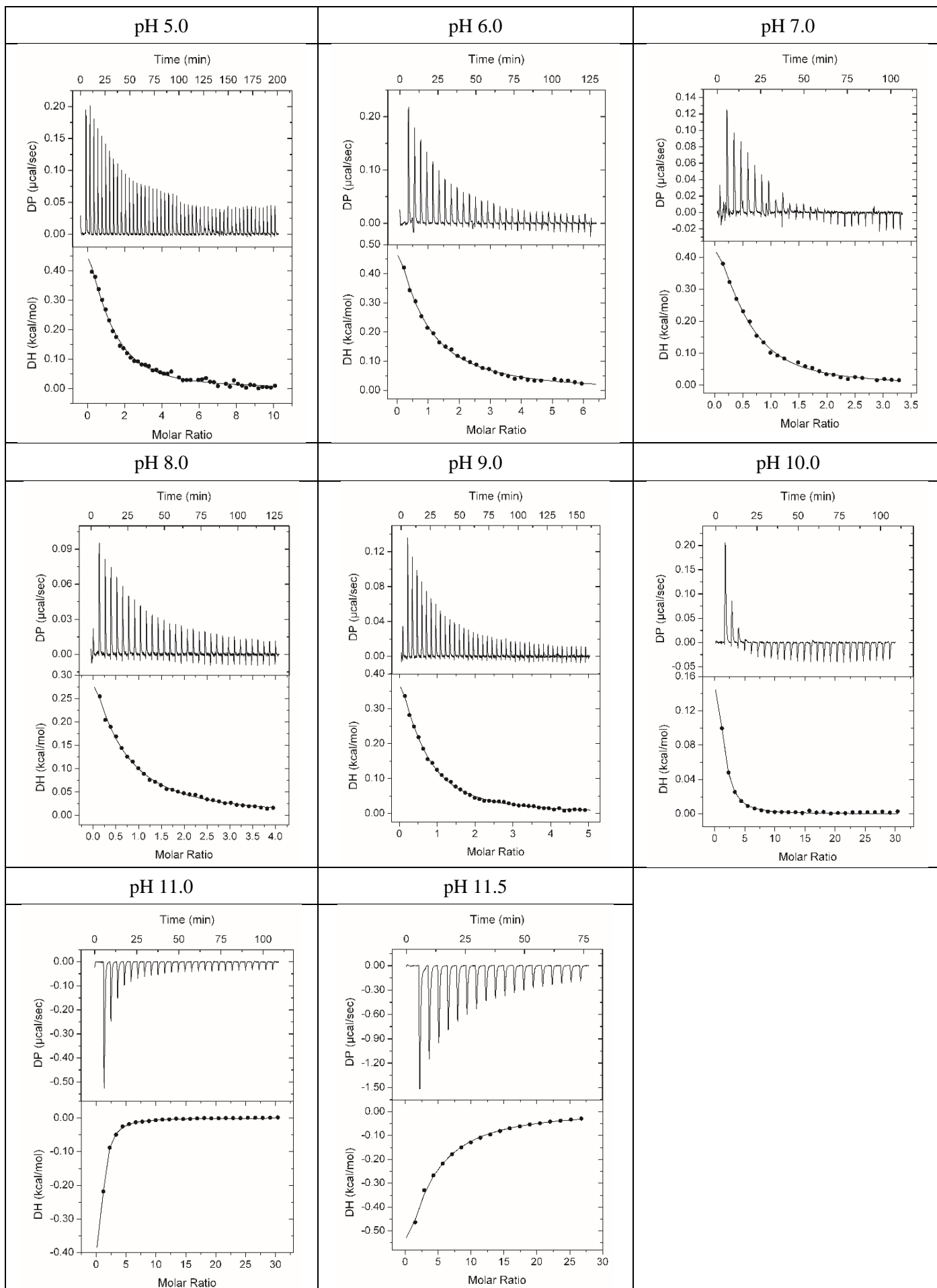
pH 9



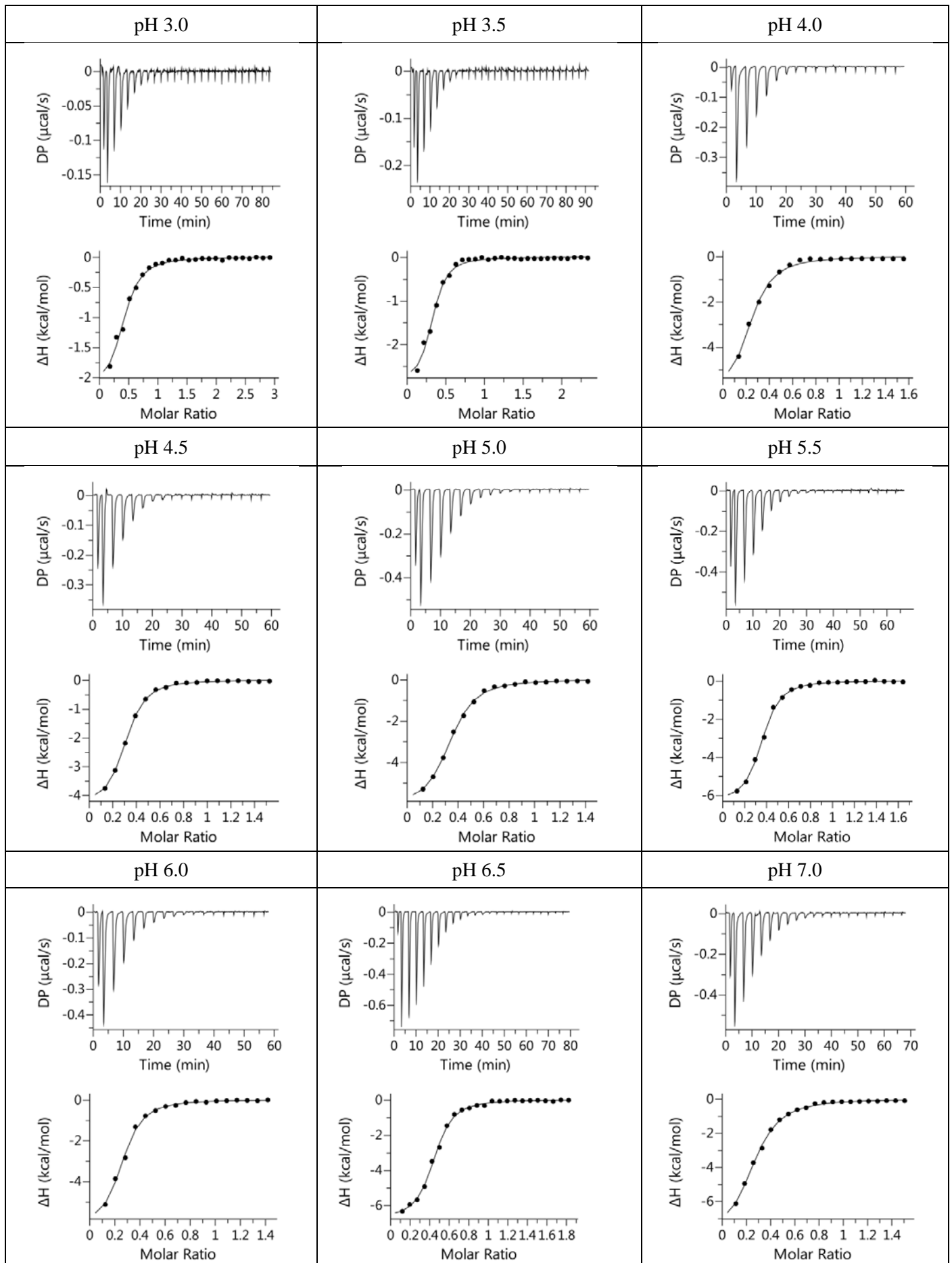
pH 9.5

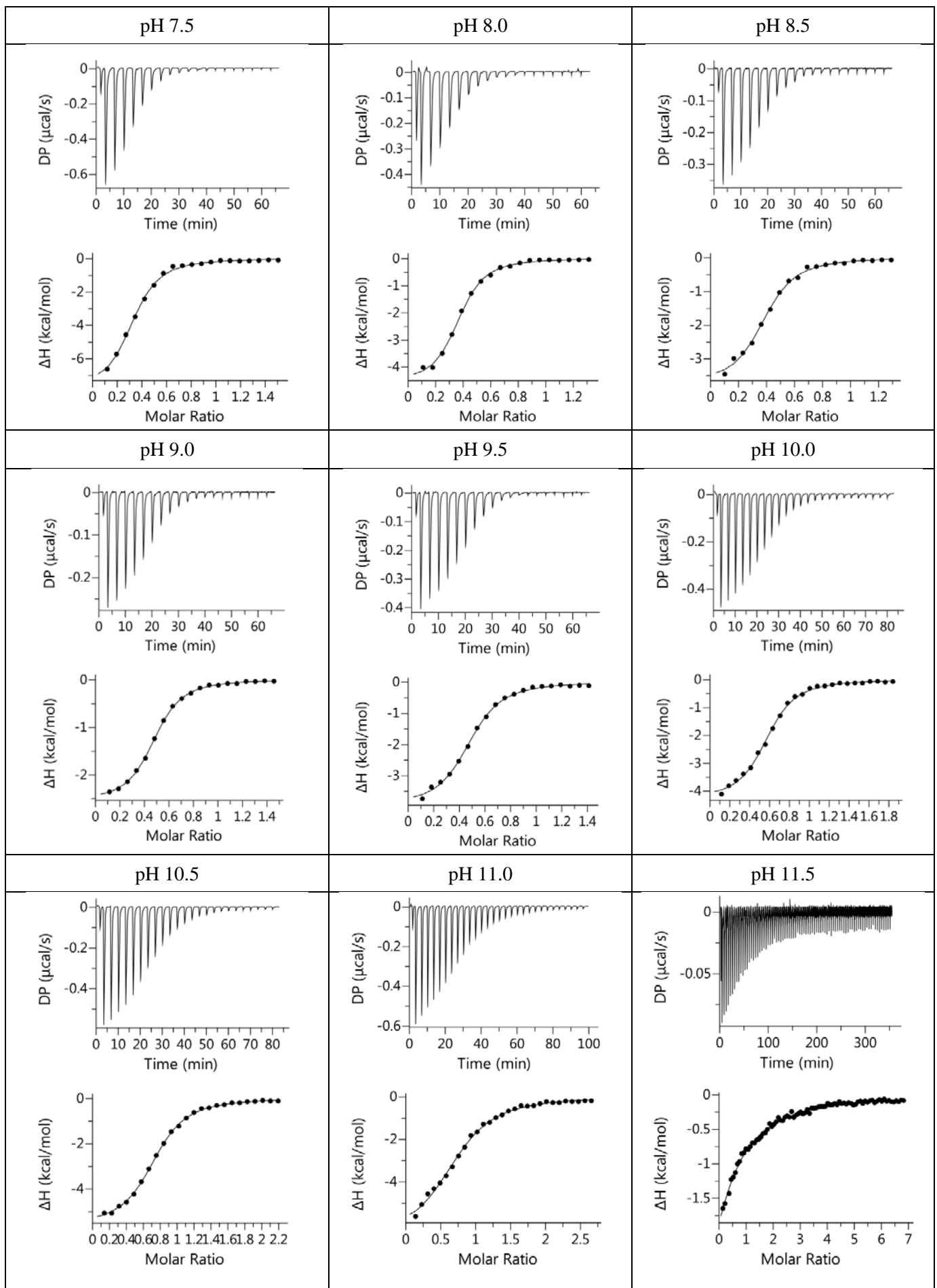


Propionate recognition by McpV-LBD

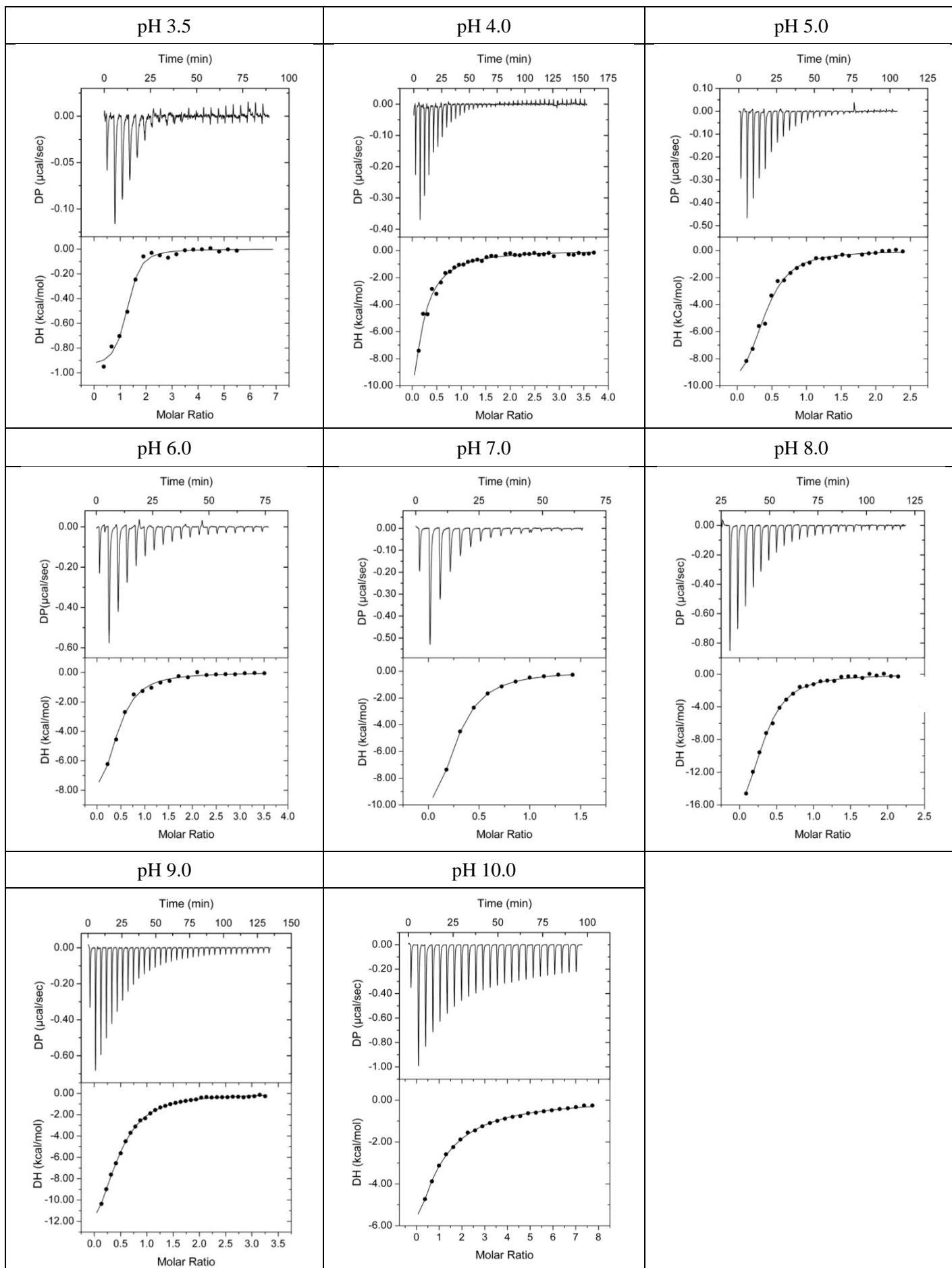


L-alanine recognition by PctA-LBD





Adenine recognition by MepH-LBD



Putrescine recognition by MepU-LBD

