

Fig. S1. Chemical structures of PKC inhibitors.

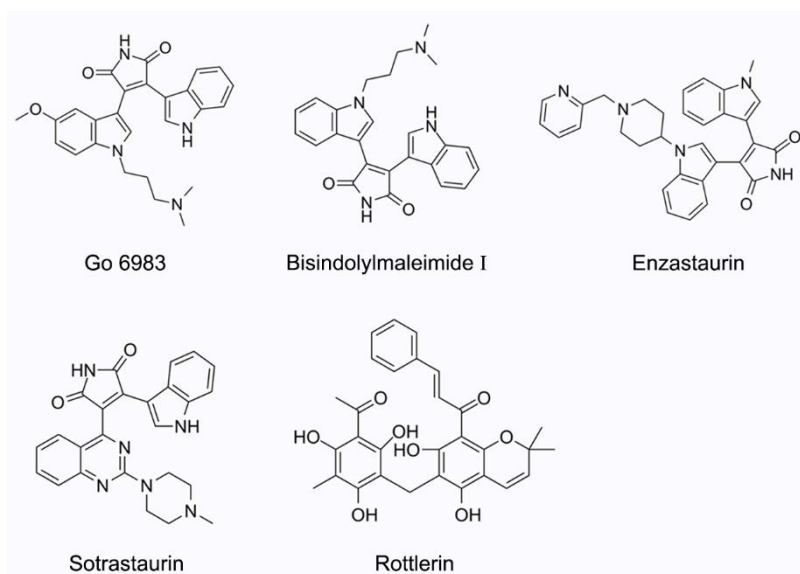


Fig. S2. Effect of PKC inhibitors on the virus entry. Cells were treated with DMSO, Go 6983, bisindolylmaleimide I, enzastaurin or sotrastaurin for 1 h, followed by pseudovirus infection. The luciferase activity of pseudovirus was measured at 16 h p.i. Data were presented as mean \pm standard deviation (SD) from three experiments. P values were calculated by ANOVA with Dunnett's multiple comparison test; ****p < 0.0001.

