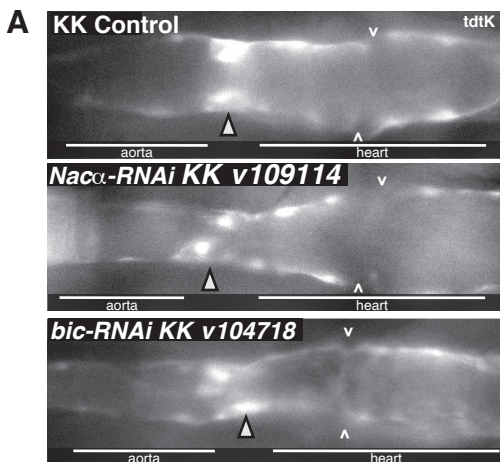
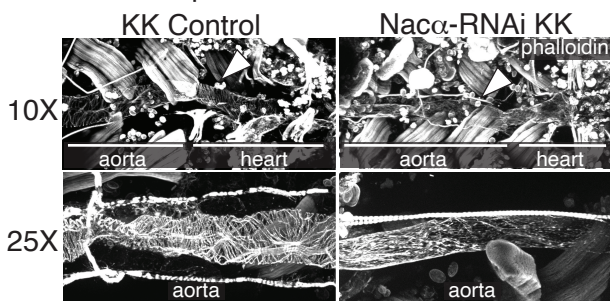


# Supplemental Figure 1



## B 28hr After Puparium Formation



### SUPPLEMENTAL FIGURE 1: Cardiac phenotypes following *Nac $\alpha$* and *bicaudal* knockdown.

**A**, Fluorescently tagged hearts using *tdtK* were imaged at higher magnification in vivo at white pupae stages which displayed intact hearts in control, *Nac $\alpha$ -RNAi*, and *bicaudal-RNAi* expressing hearts, suggesting that the heart histolyzes later, when remodeling during metamorphosis. Arrow heads point to the internal valves that separate the larval aorta from the heart. ^ point to the inflow tracts called ostia.

**B**, Pupal dissections at approximately 24-26hr APF stained with phalloidin shows the presence of the fly aorta and heart in controls (left) and with *Nac $\alpha$*  KD (right) at two magnifications. Arrowheads point to the presence of a heart tube.