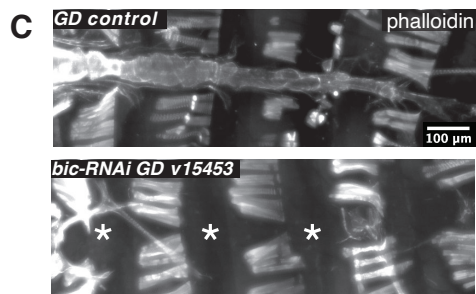
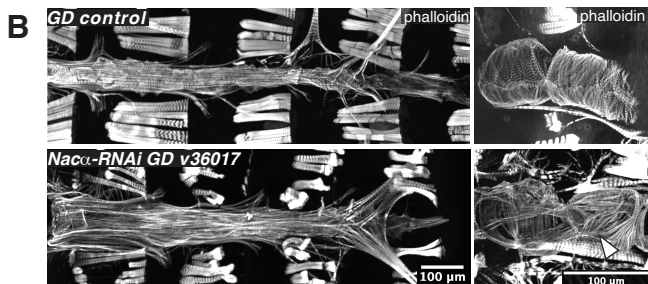
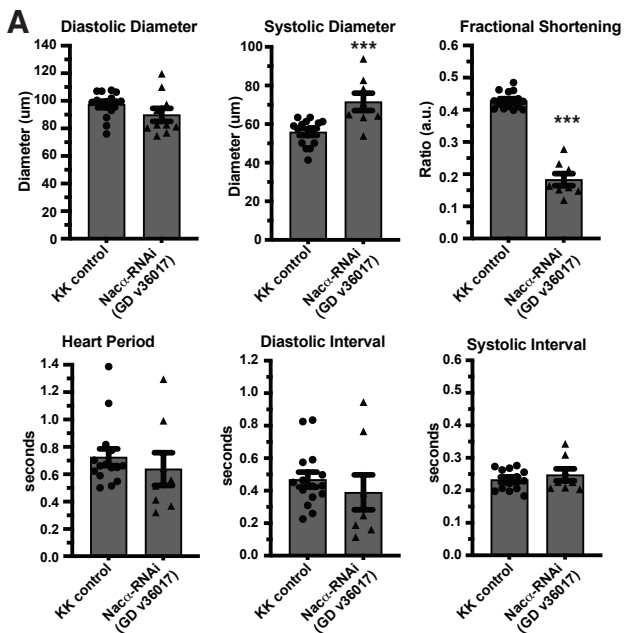


# Supplemental Figure 2



**SUPPLEMENTAL FIGURE 2: *Nacα* and *bicaudal* knockdown (KD) using additional RNAi lines.**

KD of a second *Nacα* RNAi line (GD v36017) using Hand4.2-GAL4 driver, led to the presence of an adult heart tube. **A**, Hearts were dysfunctional, with significantly increased systolic diameter, that led to severely blunted Fractional Shortening.

**B**, Phalloidin staining visualized highly disorganized circumferential fibers (arrowhead).

**C**, KD of a second *bicaudal* RNAi line (GD v15453) using Hand4.2-GAL4 led to a no heart phenotype.

\*-indicates missing heart.