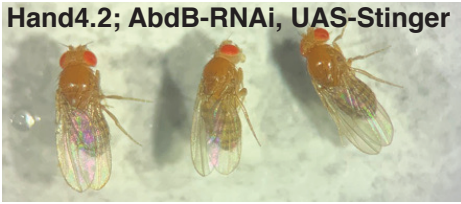


Supplemental Figure 4

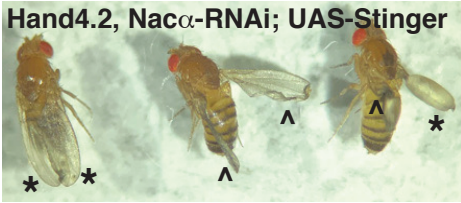
A Hand4.2; UAS-Stinger



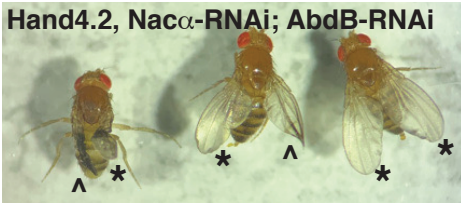
B Hand4.2; AbdB-RNAi, UAS-Stinger



C Hand4.2, Nac α -RNAi; UAS-Stinger



D Hand4.2, Nac α -RNAi; AbdB-RNAi



SUPPLEMENTAL FIGURE 4: Wing blister phenotypes. A, Wing hearts originate from pericardial cells and are required for wing maturation. In controls, proper wing heart function and hemolymph flow leads to adhesion of dorsal and ventral wing layers. B, Normal wing development is also observed with knockdown of *Abd-B*. C, Knockdown of *Nac α* using Hand4.2-GAL4 driver leads to fluid filled wing blisters (*) and crumpled wings (^). D, Co-Knockdown of *Nac α* and *Abd-B* did not rescue the wing blisters.