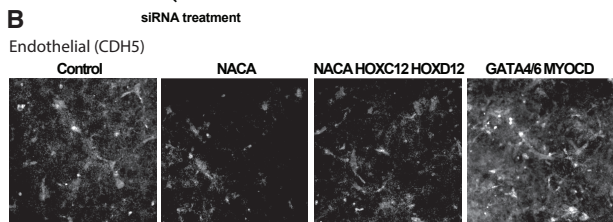
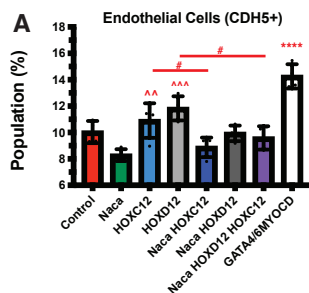


Supplemental Figure 9



SUPPLEMENTAL FIGURE 9: *Nacα* and *Hox* genes interact to redirect differentiation of Multipotent Cardiac Progenitors (MCPs). **A**, Knockdown (KD) of *Nacα*, *Hox* genes or their combination did not produce a significant change in the proportion of endothelial cell (CDH5+). The KD of transcription factors *Gata4/6*, *MyoCD* increased the proportion of endothelial cells. **B**, Representative images of immunohistological staining for select conditions.