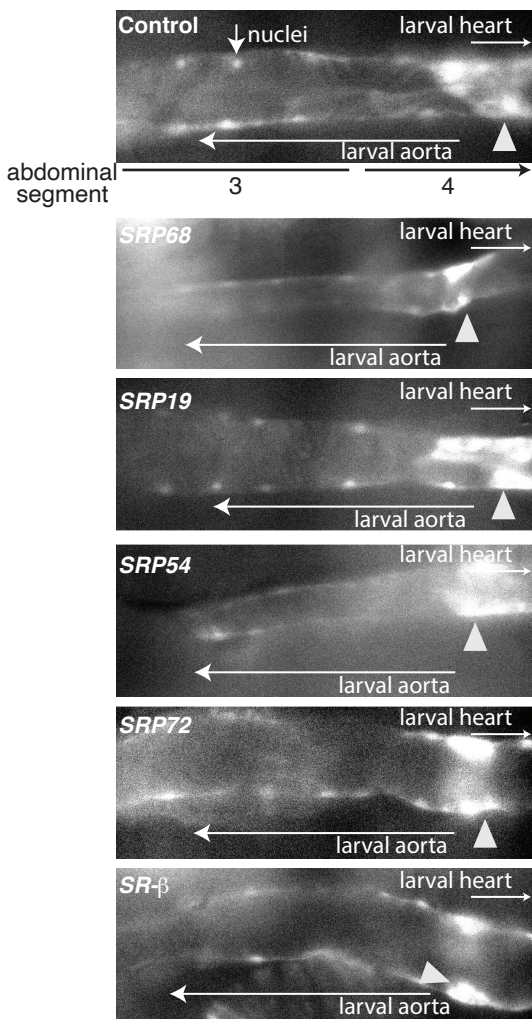


Supplemental Figure 10



SUPPLEMENTAL FIGURE 10: Images of fluorescently labeled (*tdtK*) larval aorta and heart (abdominal segments 3 and 4) of White Pupae. Heart tubes were present prior to cardiac remodeling with any of the SRP subunit knocked down using *Hand4.2-GAL4*, suggesting SRP subunits influence cardiac remodeling into adult structures during metamorphosis. Internal valves separating the larval aorta and heart are marked by arrowheads.