

## SUPPLEMENTARY DATA

### Prevention of Shiga Toxin 1-caused Colon Injury by Plant-derived Recombinant IgA

Katsuhiko Nakanishi <sup>1</sup>, Taichi Takase <sup>1</sup>, Yuya Ohira <sup>1</sup>, Ryota Ida <sup>1</sup>, Noriko Mogi <sup>1</sup>,  
Yuki Kikuchi <sup>1</sup>, Minami Matsuda <sup>1</sup>, Kohta Kurohane <sup>1</sup>, Yoshihiro Akimoto <sup>2</sup>, Junri Hayakawa <sup>3</sup>,  
Hayato Kawakami <sup>2</sup>, Yasuo Niwa <sup>4</sup>, Hirokazu Kobayashi <sup>4</sup>, Eiji Umemoto <sup>1</sup>, Yasuyuki Imai <sup>1, \*</sup>

<sup>1</sup> Laboratory of Microbiology and Immunology, School of Pharmaceutical Sciences, University of Shizuoka, Shizuoka City, Shizuoka 422-8526, Japan

<sup>2</sup> Department of Anatomy, Kyorin University School of Medicine, Mitaka, Tokyo 181-8611, Japan

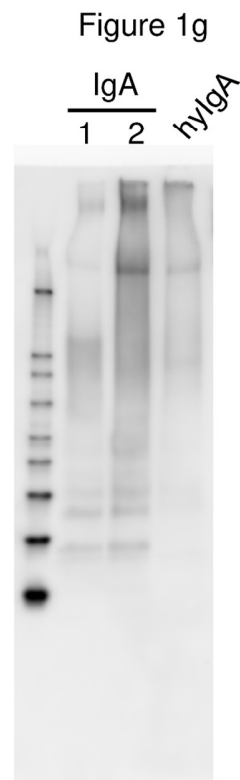
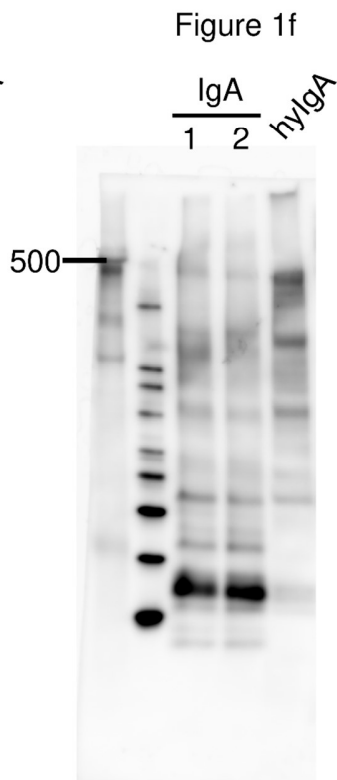
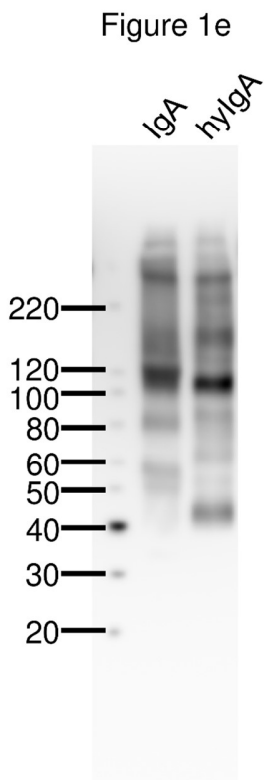
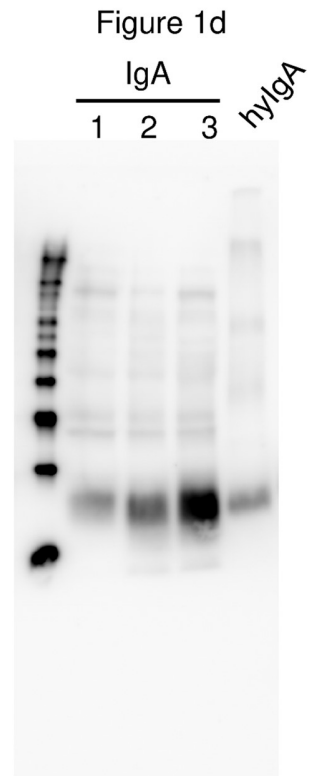
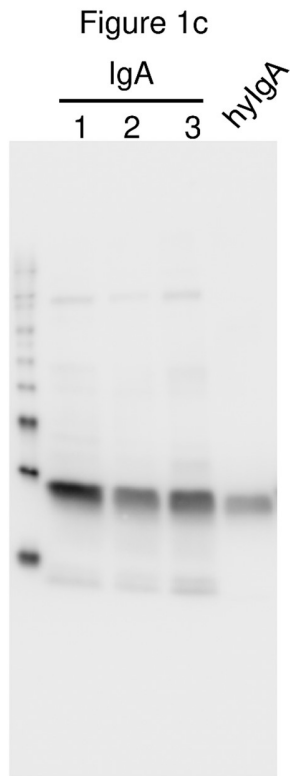
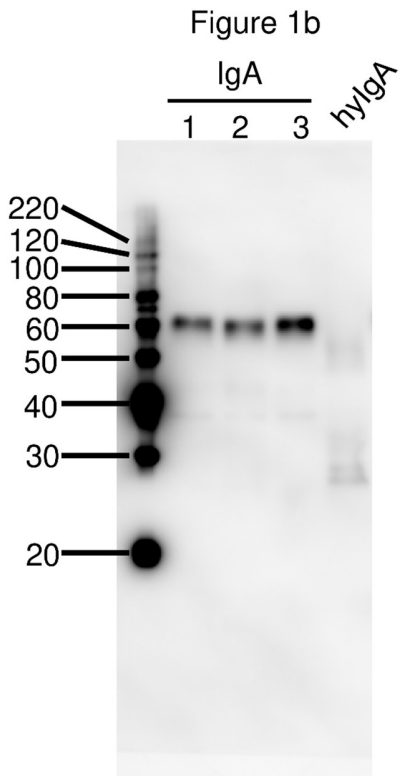
<sup>3</sup> Laboratory for Electron Microscopy, Kyorin University School of Medicine, Mitaka, Tokyo 181-8611, Japan.

<sup>4</sup> Laboratory of Plant Molecular Improvement, Graduate Division of Nutritional and Environmental Sciences, University of Shizuoka, Shizuoka City, Shizuoka 422-8526, Japan

**\*Correspondence:** Yasuyuki Imai, Laboratory of Microbiology and Immunology, School of Pharmaceutical Sciences, University of Shizuoka, Shizuoka City, Shizuoka 422-8526, Japan.

Tel: +81-54-264-5120; fax: +81-54-264-5099

E-mail: [imai@u-shizuoka-ken.ac.jp](mailto:imai@u-shizuoka-ken.ac.jp)



**Supplementary Figure S1. Original full-length blot images corresponding to the Figure**

**1-bcdefg.** Lanes appear under the labels of hyIgA correspond to the data of Figure 1. Lanes appear under the labels of IgA, the lane 3 (panels Figure 1b, 1c and 1d) and the lane 2 (panels Figure 1f and 1g) correspond to the data of Figure 1. Lanes of samples simultaneously applied in the same gel (lanes 1 and 2 in the panels Figure 1b, 1c and 1d; lane 1 in the panels Figure 1f and 1g) are not related to this study.