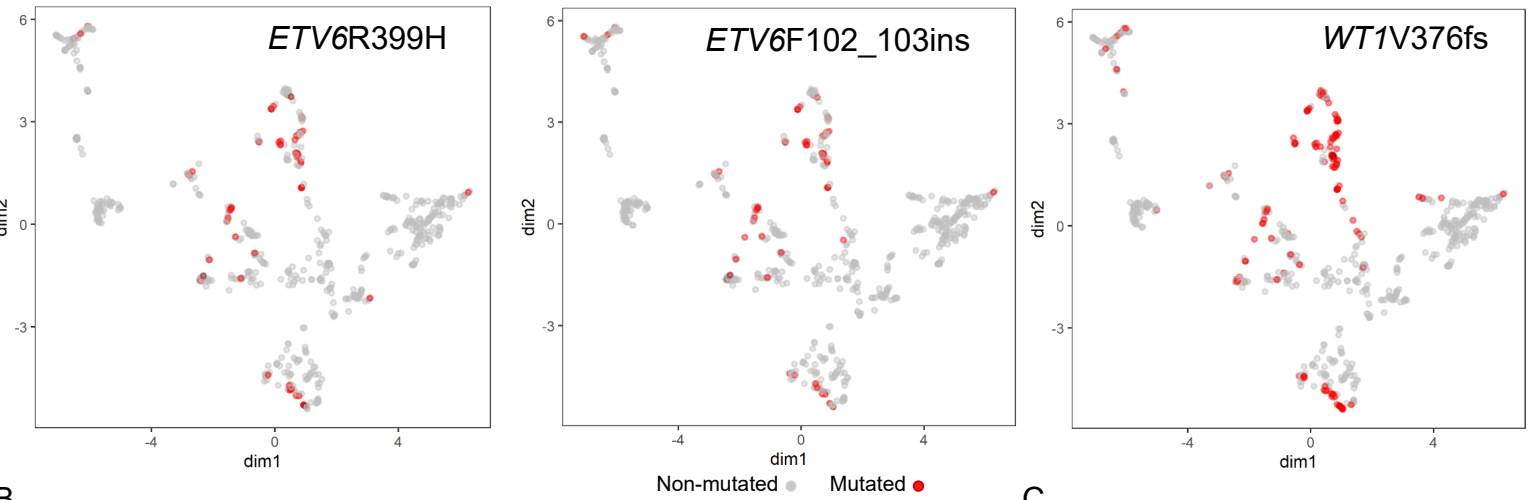
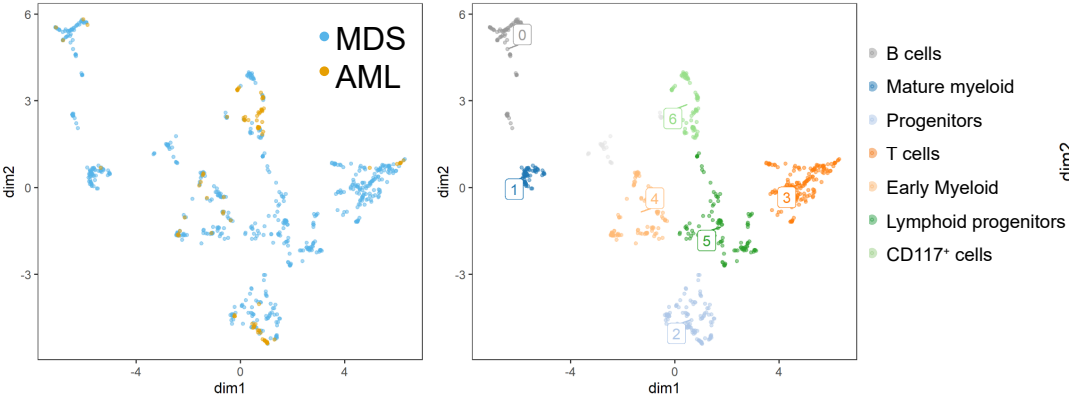


Supplementary Figure 6

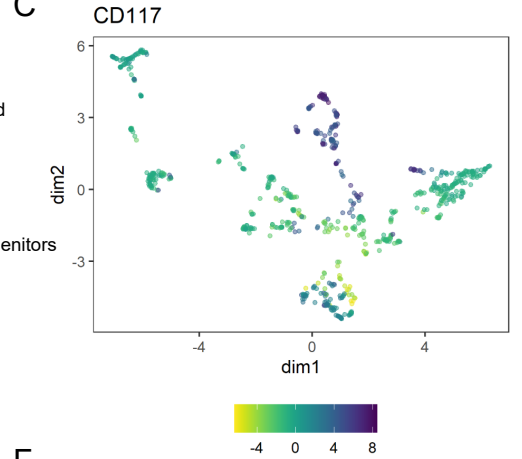
A



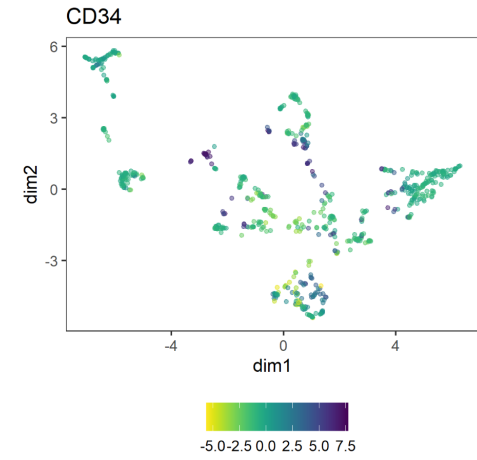
B



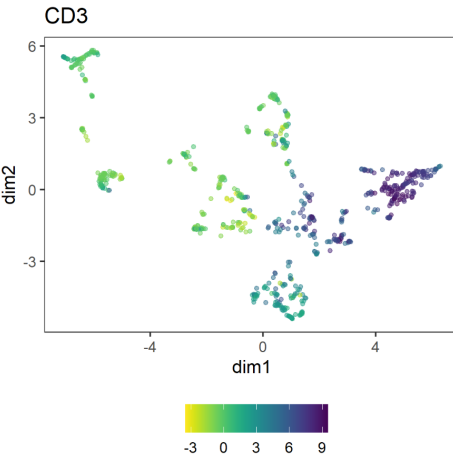
C



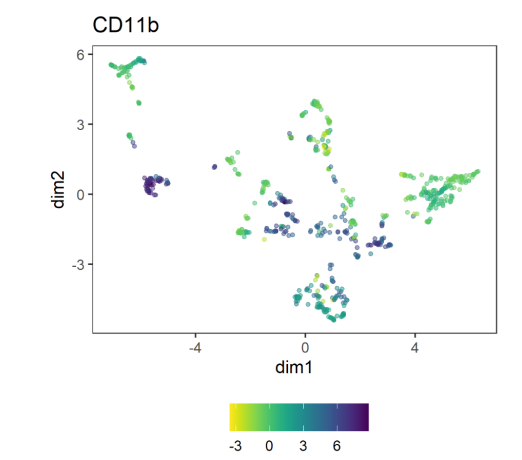
D



E



F



Supplementary Figure 6. **a**, Patient 14 proteogenomic sample analysis. UMAP embedding depicts cells mapped per phenotype and labeled with mutation presence or absence for *ETV6R399H*, *ETV6F102_103ins*, *WT1V376fs* as depicted. **b**, Specific contributions to the map and clustering of cell types is shown **c-f**, Surface marker expression is shown for CD117, CD34, CD3, CD11b, respectively.