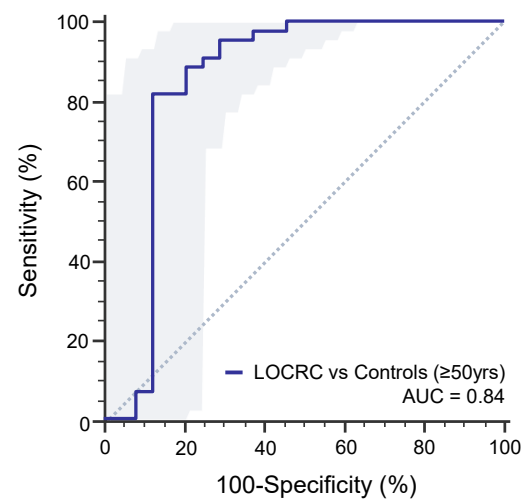


Supplementary FIGURE 1



## Supplemental Figure and Table Legend

**Supplementary Figure 1:** Diagnostic potential evaluation of the miRNA biomarker panel to identify LOCRC patients from controls. ROC curve analysis to identify LOCRC patients from age-matched non-disease controls ( $\geq 50$  years old).

**Supplementary Table 1:** Recent studies reporting the clinical significance of 4 candidate miRNAs as cancer biomarkers

**Supplementary Table 2:** miRNA-mRNA network analysis of 4 candidate miRNAs

**Supplementary Table 1:** Recent studies reporting the clinical significance of 4 candidate miRNAs as cancer biomarkers

<b>miRNA</b>	<b>Cancers</b>	<b>Clinical significance</b>	<b>Reference</b>
hsa-miR-193a-5p	Pancreatic cancer	Metastasis	45
	Colorectal cancer	Prognosis	46
hsa-miR-210	Brest cancer	Prognosis	47
	Head and neck cancer	Prognosis	48
	Pancreatic cancer	Diagnosis	49
	Brest cancer	Prognosis	50
	Clear cell renal cell carcinoma	Diagnosis	51
	Colorectal cancer	Cancer detection, Prognosis	52
	Non-small cell lung cancer	Diagnosis	53
	Brest cancer	Prognosis	54
hsa-miR-513a-5p	Colorectal cancer	Over-expressed in cancer tissue	55
	Giant cell tumor of bone	Metastasis	56
	Colorectal cancer	Liver metastasis	57
	Brest cancer	Cancer detection	58
hsa-miR-628-3p	Pancreatic cancer	Cancer detection	59
	Lung cancer	Cancer detection	60

**Supplementary Table 2:** miRNA-mRNA network analysis of 4 candidate miRNAs

miRNA-mRNA regulatory analysis							
miRNA	Target Genes	miRNA	Target Genes	miRNA	Target Genes	miRNA	Target Genes
hsa-miR-193a-5p	BLID	hsa-miR-210-3p	IGF2	hsa-miR-513a-5p	GNG13	hsa-miR-628-3p	RBM41
	DSG1		GALR2		PNPLA7		SINHCAF
	ZNRD1		ISCU		ARFGEF1		MAMDC2
	ACVR1		KMT2D		EPS8		PAIP1
	CLCA2		AIFM3		TNPO1		EPHA7
	CEP57		NDUFA4		GCC2		BEND4
	CXorf67		FGFRL1		SHISA7		ATRX
	TRAT1		MID1IP1		DCUN1D4		LSM12
	YTHDF1		BDNF		AGFG1		SLC40A1
	KDEL3		RUNX3		ADAMTSL3		ABCA13
	DCLK1		DENND6A		ARHGEF26		ZNF197
	DSCAML1		GIT2		CSNK1G1		SPAG1
	SLC4A10		SHISAL2B		EYA1		DDX5
	NETO2		TTC13		ZNF329		RICTOR
	DMRT2		SDF2		GXYLT1		MED23
	DDX58		ACVR1B		BTG1		SEPT7
	DHX34		PCYT1B		USP46		PPP3CB
	DGKK		THSD7A		SEMA6A		SGCD
	ZNHIT6		B4GALT5		NPAS3		HSPBAP1
	SLC30A5		BARD1		PLEKHJ1		PTTG1IP