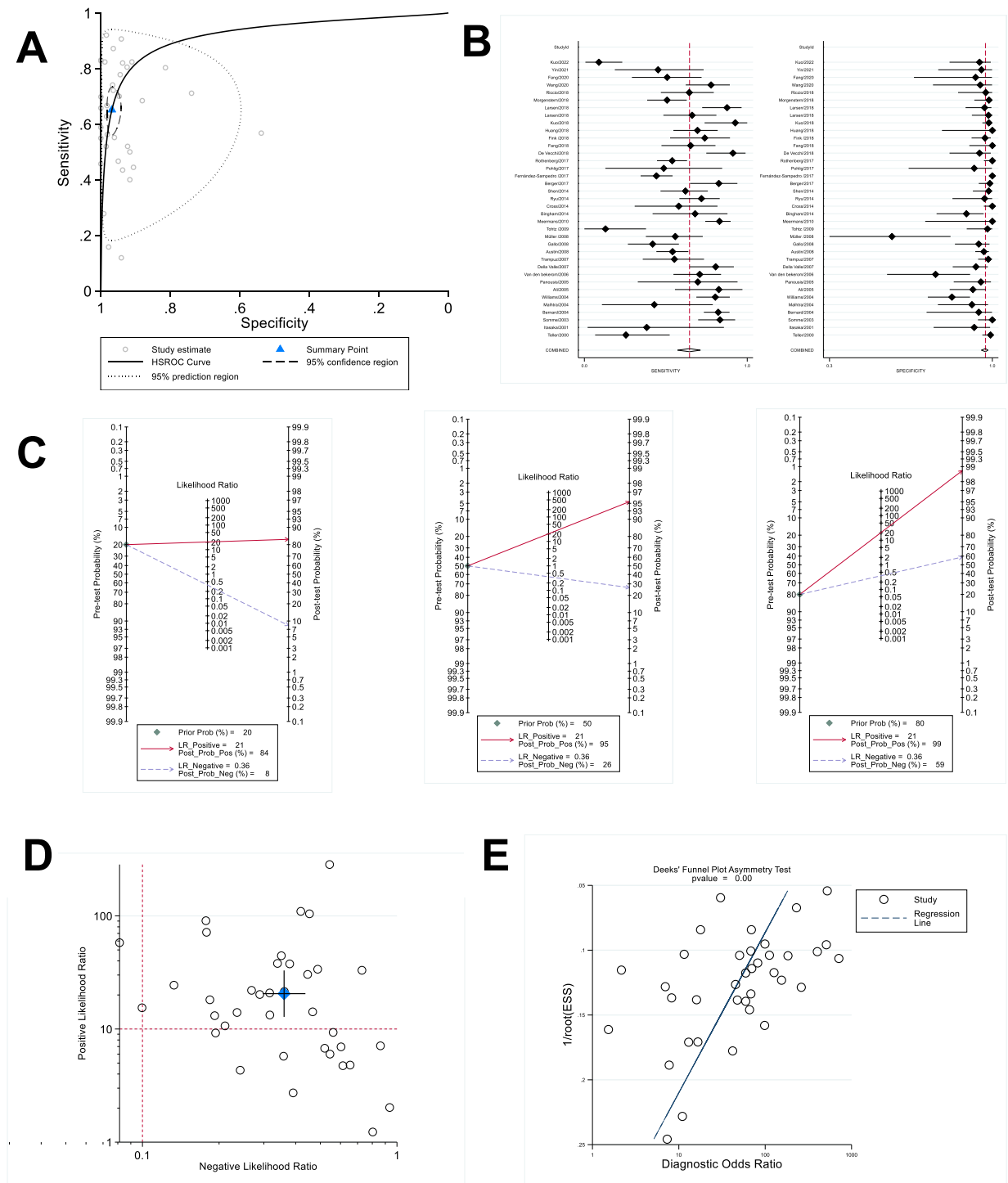


Supplementary Figures S23: Aspiration Culture



A: HSROC gram; B: Forest gram; C: Fagan's grams for low clinical suspicion of PJI (20%), low clinical suspicion of PJI (50%), and high clinical suspicion of PJI (80%); D: Likelihood Matrix gram; E: Linear regression test of funnel plot asymmetry.