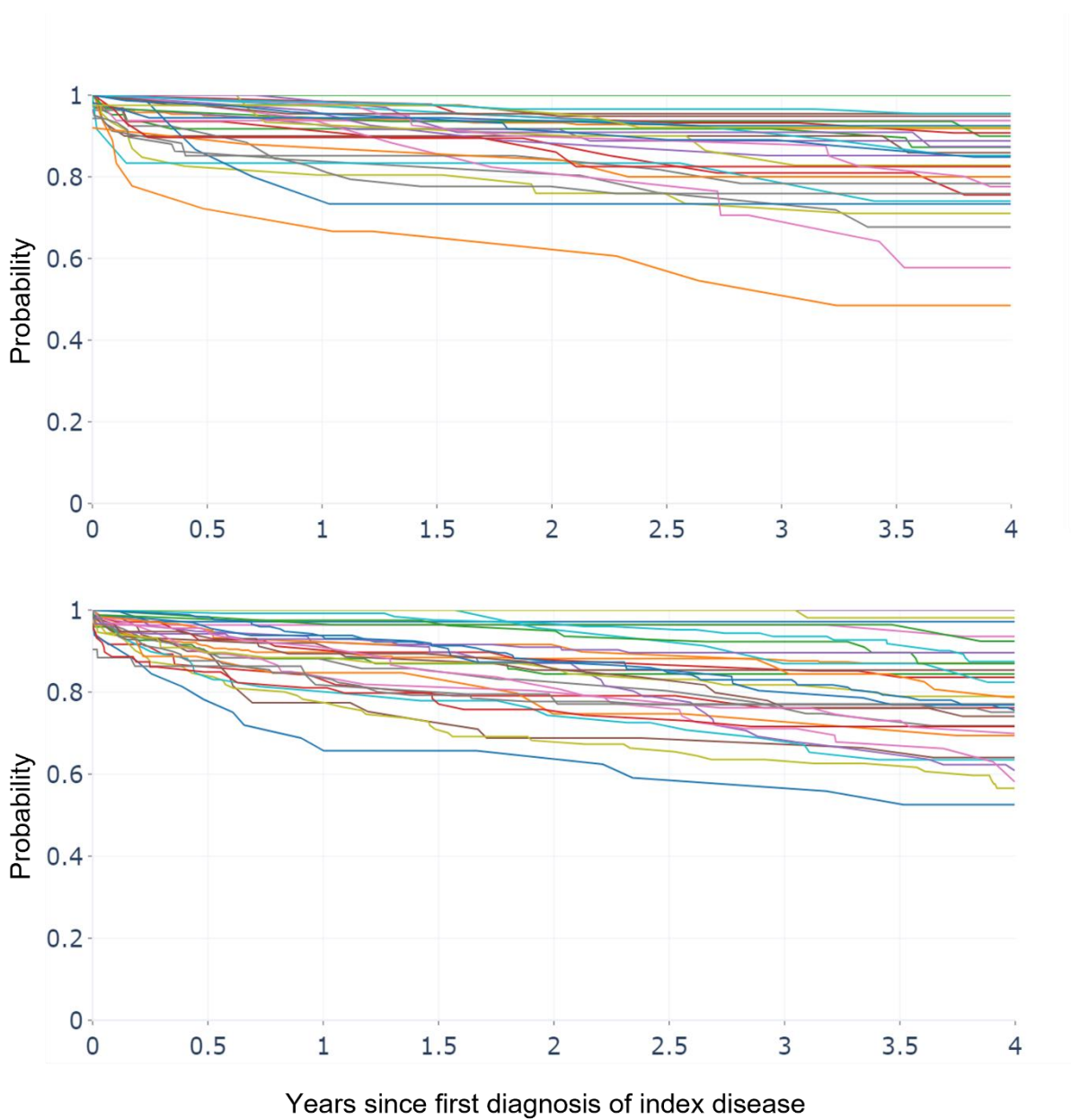


Supplementary Table 1. 100 most common diagnoses.

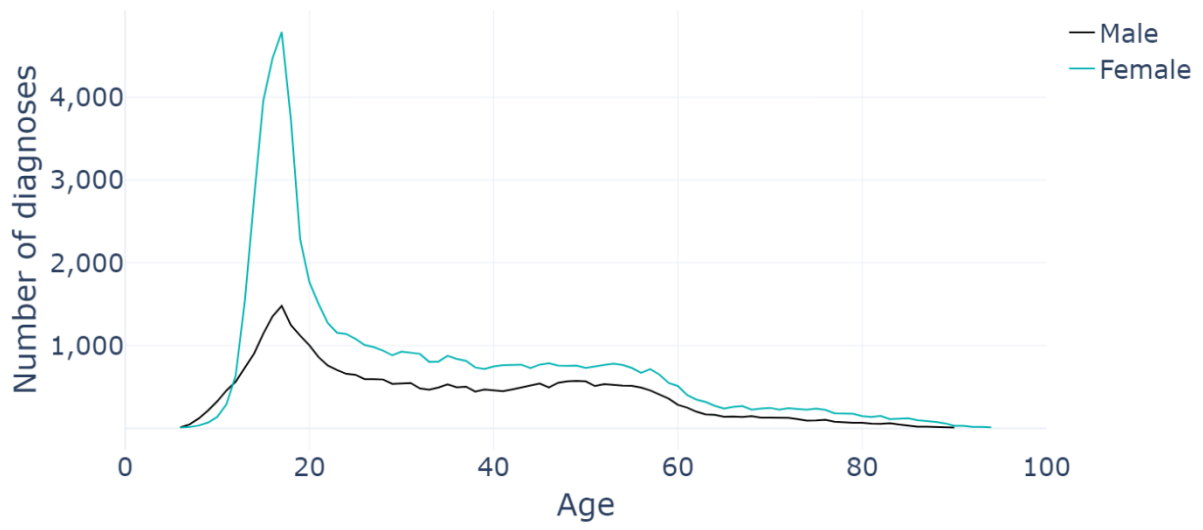
Rank	Code	Description	Patients	Women			Men			
				%	Age, percentiles					
					25 th	50 th	75 th	25 th	50 th	75 th
1	I10	Essential (primary) hypertension	87,273	53	60	69	79	56	65	74
2	J06	Acute upper respiratory infections at multiple and unspecified sites	70,515	52	2	8	35	1	4	18
3	M54	Dorsalgia	66,696	59	34	48	62	35	48	61
4	J18	Pneumonia, organism unspecified	61,383	47	37	63	78	41	64	76
5	J45	Asthma	56,301	55	16	44	62	7	15	53
6	H25	Senile cataract	55,387	62	68	75	80	66	73	79
7	M79	Other soft tissue disorders, not elsewhere classified	54,662	60	34	50	63	30	49	65
8	F32	Depressive episode	54,168	63	16	19	37	17	25	45
9	I48	Atrial fibrillation and flutter	54,048	45	67	75	82	59	68	76
10	M17	Gonarthrosis [arthrosis of knee]	44,729	63	59	67	75	56	65	72
11	H66	Suppurative and unspecified otitis media	43,433	47	2	4	16	1	3	7
12	H90	Conductive and sensorineural hearing loss	43,345	54	34	59	73	19	58	72
13	G47	Sleep disorders	42,894	34	49	58	66	46	55	64
14	I25	Chronic ischemic heart disease	42,746	36	66	75	82	62	70	77
15	A09	Diarrhea and gastroenteritis of presumed infectious origin	40,501	54	6	32	65	3	23	55
16	F41	Other anxiety disorders	36,647	66	16	21	35	17	25	40
17	E11	Non-insulin-dependent diabetes mellitus	36,537	42	59	68	76	58	66	72
18	N39	Other disorders of urinary system	36,471	81	43	61	74	58	70	77
19	M25	Other joint disorders, not elsewhere classified	35,719	60	27	42	56	26	41	54
20	K57	Diverticular disease of intestine	33,404	59	58	67	76	53	64	73
21	M51	Other intervertebral disc disorders	33,299	54	38	48	59	38	48	57
22	I50	Heart failure	30,504	49	72	80	86	64	73	80
23	L20	Atopic dermatitis	30,063	54	5	21	39	2	8	30
24	N10	Acute tubulo-interstitial nephritis	30,058	64	19	54	76	48	66	77
25	K80	Cholelithiasis	29,707	65	42	57	70	49	63	74
26	I63	Cerebral infarction	29,281	47	60	72	81	55	66	75
27	M75	Shoulder lesions	28,915	53	47	54	61	47	55	62
28	K40	Inguinal hernia	28,275	14	35	63	76	46	62	72
29	F33	Recurrent depressive disorder	28,011	68	28	39	51	29	41	52
30	F10	Mental and behavioral disorders due to use of alcohol	26,849	33	25	42	55	35	47	57
31	E78	Disorders of lipoprotein metabolism and other lipidemias	26,712	46	56	66	75	52	62	71
32	I49	Other cardiac arrhythmias	26,429	57	45	66	78	46	65	75
33	H35	Other retinal disorders	26,041	58	67	76	83	60	72	80
34	N30	Cystitis	25,769	84	28	59	78	55	69	79
35	L30	Other dermatitis	24,901	58	35	54	66	40	57	68
36	M16	Coxarthrosis [arthrosis of hip]	24,837	59	61	69	76	57	66	73
37	M23	Internal derangement of knee	24,772	50	35	48	58	32	44	53

38	C44	Other malignant neoplasms of skin	24,210	54	68	76	84	68	76	82
39	J35	Chronic diseases of tonsils and adenoids	24,004	54	7	18	30	4	8	23
40	E66	Obesity	23,852	60	33	45	54	18	47	57
41	N40	Hyperplasia of prostate	23,820	0				65	71	77
42	C50	Malignant neoplasm of breast	23,475	99	52	62	69	60	68	75
43	I21	Acute myocardial infarction	23,472	37	66	75	82	58	66	75
44	N92	Excessive, frequent, or irregular menstruation	23,435	100	37	44	48			
45	A49	Bacterial infection of unspecified site	23,392	49	51	66	77	52	66	75
46	I87	Other disorders of veins	23,133	70	44	55	67	48	58	69
47	J20	Acute bronchitis	22,790	52	25	52	70	5	45	69
48	H53	Visual disturbances	22,735	59	25	48	66	15	45	64
49	I70	Atherosclerosis	22,531	44	68	76	84	64	71	78
50	G56	Mononeuropathies of upper limb	22,342	65	44	54	64	45	55	64
51	G43	Migraine	22,164	74	21	34	47	12	18	41
52	H10	Conjunctivitis	22,084	55	10	32	53	5	18	46
53	J30	Vasomotor and allergic rhinitis	22,051	49	13	24	38	10	14	30
54	I84	Hemorrhoids	21,713	56	43	55	68	41	52	64
55	K59	Other functional intestinal disorders	21,174	57	6	25	63	5	9	48
56	K35	Acute appendicitis	20,937	49	25	38	57	24	36	52
57	H40	Glaucoma	20,809	61	61	71	79	55	68	76
58	D12	Benign neoplasm of colon, rectum, anus, or anal canal	20,761	50	58	67	75	59	68	75
59	M47	Spondylosis	20,670	57	54	63	72	51	59	68
60	J15	Bacterial pneumonia, not elsewhere classified	20,430	46	46	63	76	48	64	75
61	F43	Reaction to severe stress, and adjustment disorders	20,417	62	16	22	39	13	18	39
62	A46	Erysipelas	20,414	43	53	66	78	47	59	69
63	I20	Angina pectoris	20,211	39	64	73	80	60	68	76
64	J03	Acute tonsillitis	19,895	54	9	19	29	5	17	27
65	K21	Gastro-esophageal reflux disease	19,791	52	25	52	66	10	48	63
66	G45	Transient cerebral ischemic attacks and related syndromes	19,441	54	62	71	80	58	68	77
67	H65	Nonsuppurative otitis media	19,164	44	3	6	39	2	5	12
68	G40	Epilepsy	19,037	50	12	29	51	10	27	52
69	N83	Noninflammatory disorders of ovary, fallopian tube and broad ligament	18,934	100	33	45	59	21	26	26
70	J44	Other chronic obstructive pulmonary disease	18,900	40	62	69	75	63	69	76
71	M19	Other arthrosis	18,900	58	53	60	70	48	57	65
72	M48	Other spondylopathies	18,813	57	61	70	77	57	66	74
73	D25	Leiomyoma of uterus	18,548	100	41	47	52	30	43	43
74	G44	Other headache syndromes	18,317	70	29	42	56	31	43	55
75	C61	Malignant neoplasm of prostate	18,133	0				65	71	77
76	J31	Chronic rhinitis, nasopharyngitis and pharyngitis	18,089	53	30	45	58	26	42	56
77	D48	Neoplasm of uncertain or unknown behavior of other and unspecified sites	17,686	56	40	57	71	39	58	71

78	H43	Disorders of vitreous body	17,512	63	56	64	70	56	64	70
79	J21	Acute bronchiolitis	17,457	39	0	1	2	0	1	2
80	J01	Acute sinusitis	17,097	64	30	42	58	23	41	58
81	L57	Skin changes due to chronic exposure to nonionizing radiation	16,400	57	70	77	84	71	77	83
82	M20	Acquired deformities of fingers and toes	16,345	80	52	60	68	52	60	68
83	H26	Other cataract	16,206	67	62	75	82	47	64	77
84	K92	Other digestive system diseases	15,873	42	53	71	83	50	64	76
85	H04	Disorders of lacrimal system	15,462	70	41	57	70	32	51	67
86	J32	Chronic sinusitis	15,091	63	36	48	60	35	48	61
87	I35	Nonrheumatic aortic valve disorders	15,026	45	69	78	83	60	71	78
88	K02	Dental caries	14,736	43	16	45	64	18	48	64
89	N81	Female genital prolapse	14,566	100	57	68	76			
90	L50	Urticaria	14,361	62	22	39	53	8	27	49
91	K29	Gastritis and duodenitis	14,307	52	51	64	75	52	64	73
92	H02	Other disorders of eyelid	14,099	61	58	67	77	59	68	76
93	N97	Female infertility	13,884	100	30	33	36	31	31	33
94	H33	Retinal detachments and breaks	13,666	47	52	60	68	52	61	68
95	L02	Cutaneous abscess, furuncle and carbuncle	13,612	44	26	41	59	27	42	57
96	I80	Phlebitis and thrombophlebitis	13,604	57	42	59	72	45	57	69
97	A41	Other septicemia	13,570	48	38	61	74	40	60	71
98	D64	Other anemias	13,544	52	45	67	79	54	68	77
99	N84	Polyp of female genital tract	13,487	100	43	54	65			
100	E10	Insulin-dependent diabetes mellitus	13,443	44	14	28	48	14	30	51



Supplementary Fig. 1. Atrial fibrillation. Cluster-specific Kaplan-Meier survival for 60- to 69-year-old women (upper) and men (lower).



Supplementary Fig. 2. Number of depressive episode (F32) diagnoses by age.