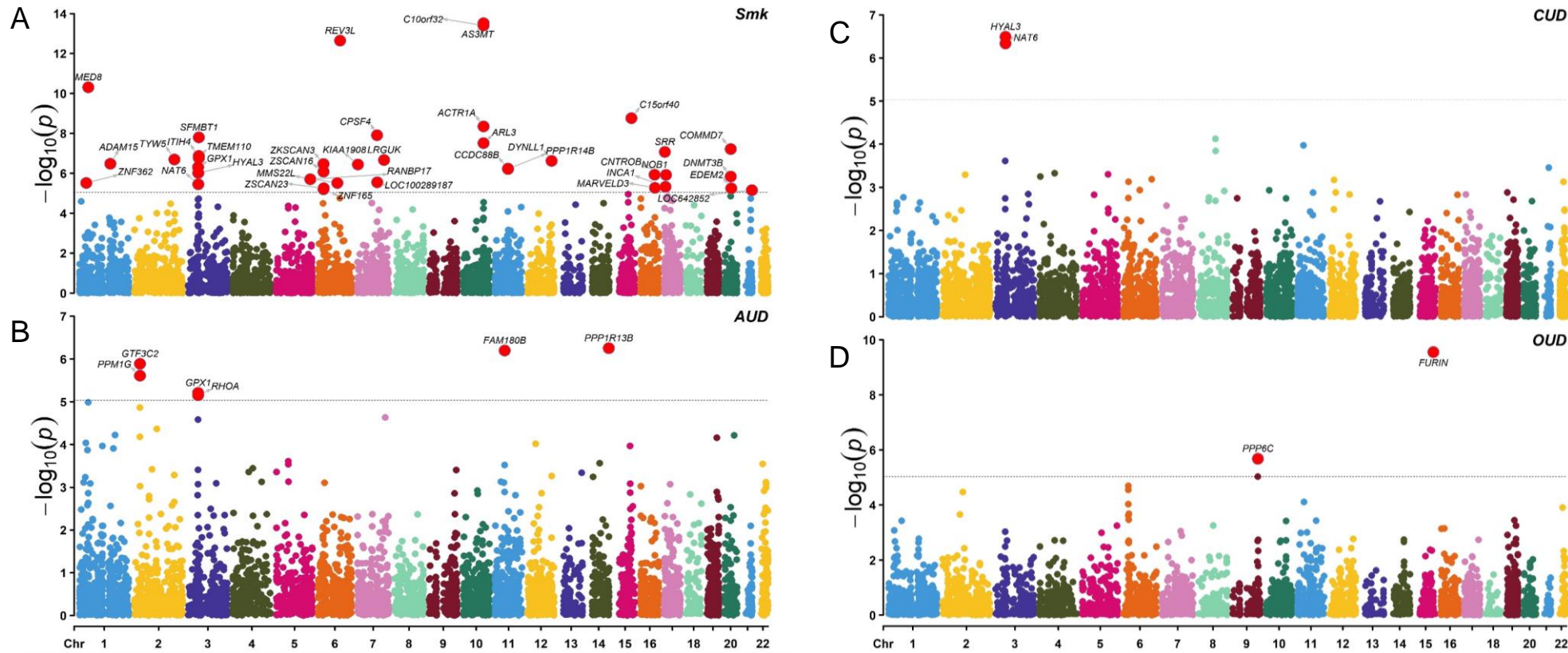


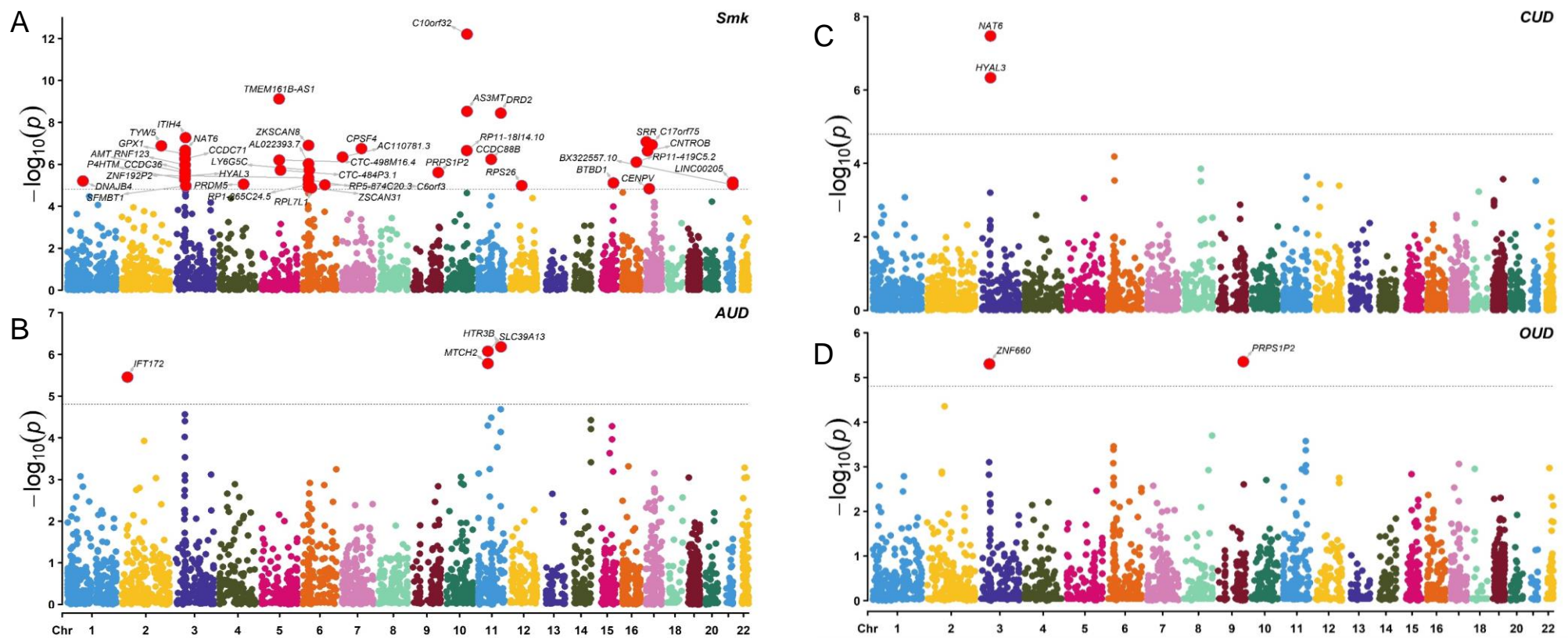
Supplementary figures for “Integrating  
Human Brain Proteomic Data with  
Genome-Wide Association Findings for  
Substance Use Traits Identifies Novel  
Brain Proteins”

# Supplementary Figure 1: Results of TWAS CMC eQTL for substance use traits



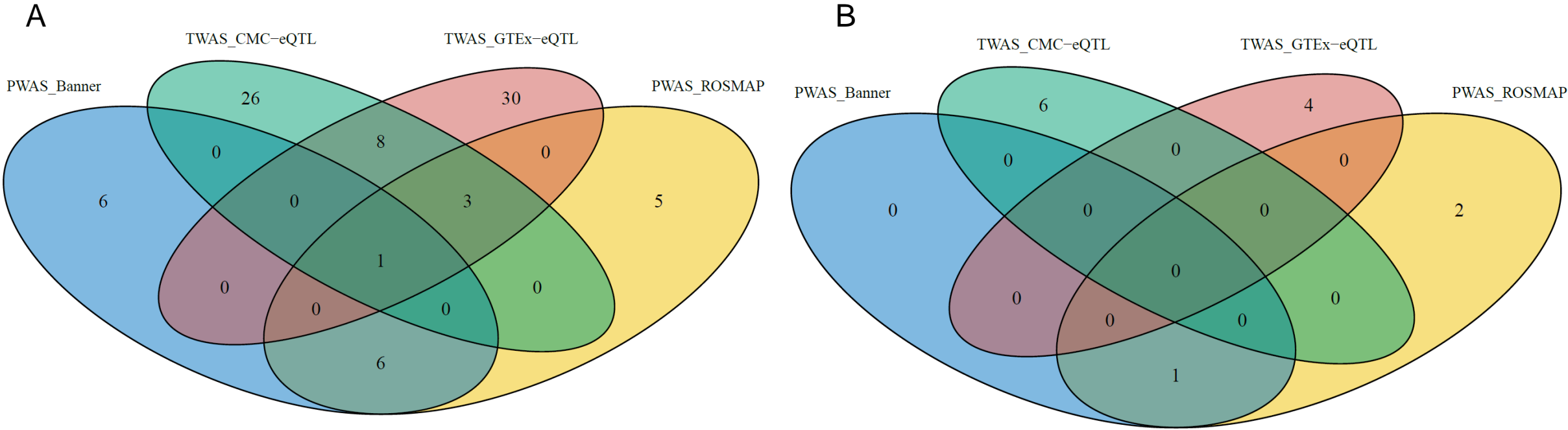
Manhattan plots for (A) smoking initiation (Smk); (B) alcohol use disorder (AUD); (C) cannabis use disorder (CUD); and (D) opioid use disorder (OUD). Transcriptome-wide association analyses were conducted using FUSION.

# Supplementary Figure 2: Results of TWAS GTEX eQTL for substance use traits



Manhattan plots for (A) smoking initiation (Smk); (B) alcohol use disorder (AUD); (C) cannabis use disorder (CUD); and (D) opioid use disorder (OUD). Transcriptome-wide association analyses were conducted using FUSION.

Supplementary Figure 3: Gene overlaps for PWAS and TWAS eQTLs in substance use traits



# Supplementary Figure 4: Comparison of differentially expressed proteins in substance use and other neuropsychiatric traits

