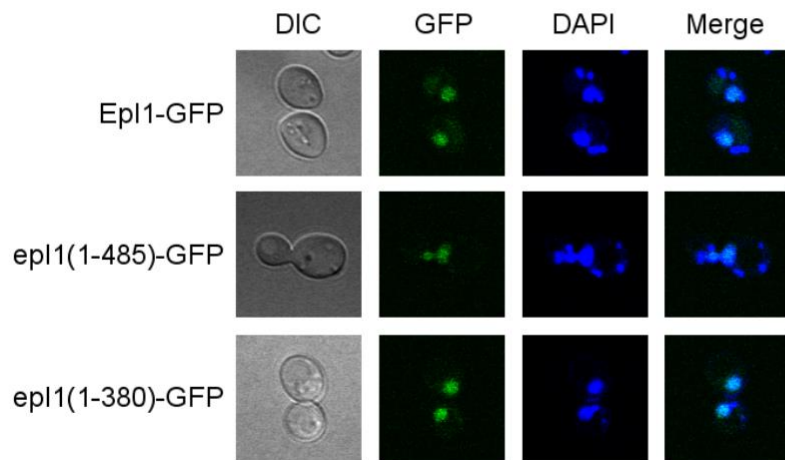
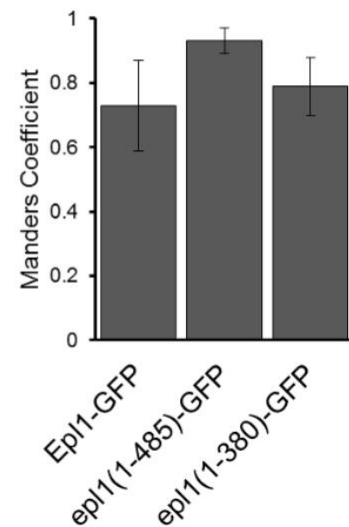


**A****B**

**Figure S1.** Truncation of Epl1 did not affect its nuclear localization. (A) EpI1-GFP, epl1(1-380)-GFP, or epl1(1-485) strains were stained with DAPI and visualized by confocal microscopy. Nuclear localization was observed for all three Epl1 constructs. (B) Co-localization of GFP and DAPI signals was quantified using the Manders coefficient of the images (n=10).