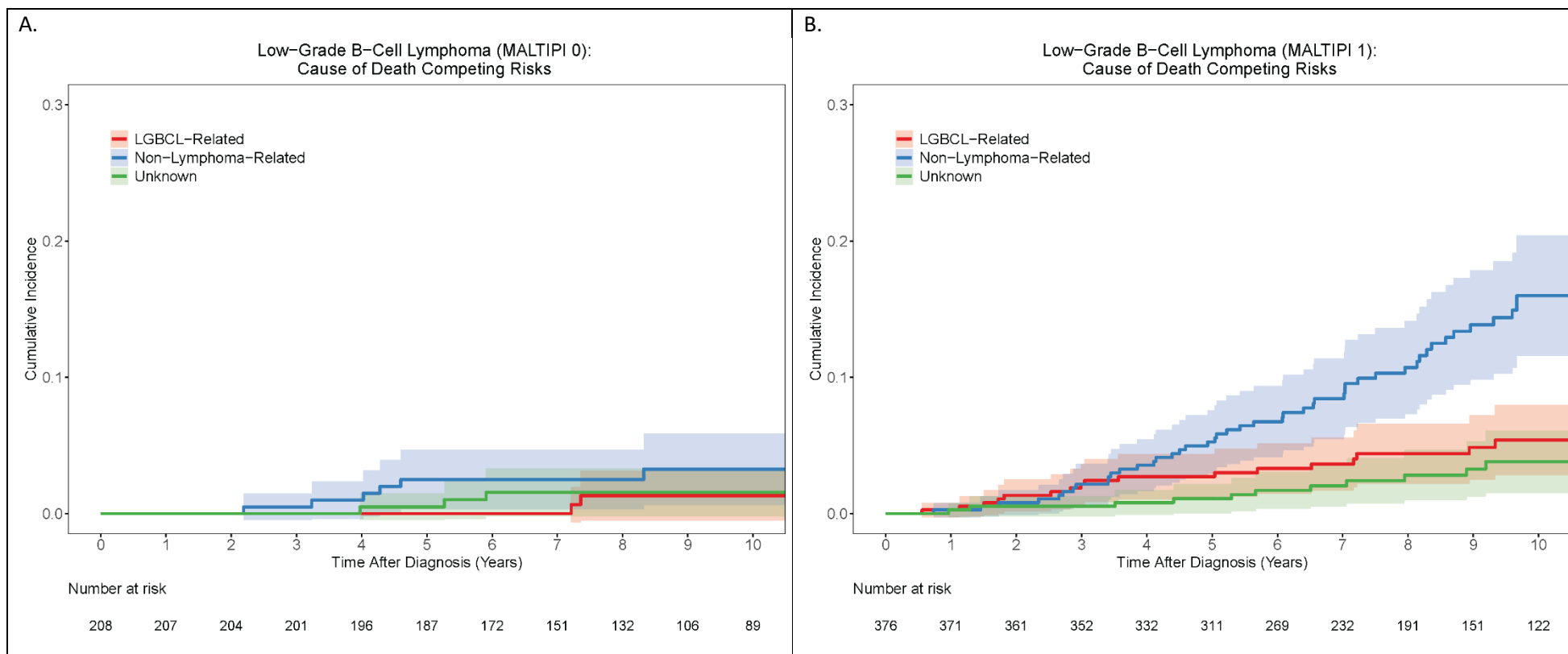
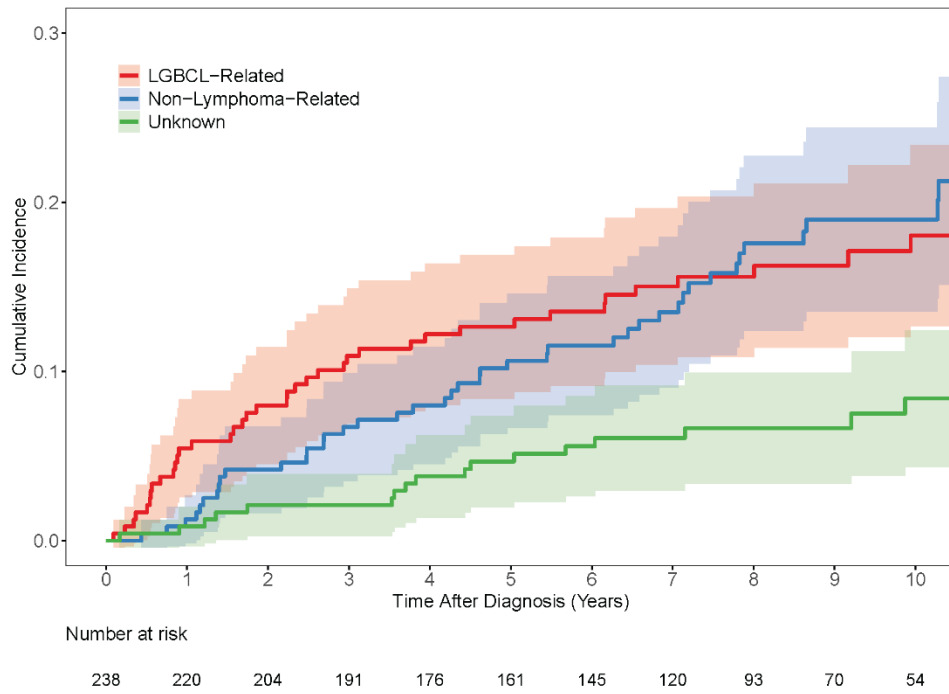


Supplement Figure 1: Cumulative incidence for the competing risks of cause of death according to Mucosa-Associated Lymphoid Tissue International Prognostic Index (MALTIPI) score. (A) Cumulative incidence by cause of death for patients with MALTIPI score 0. (B) Cumulative incidence by cause of death for patients with MALTIPI score 1. (C) Cumulative incidence by cause of death for patients with MALTIPI score 2 to 3.

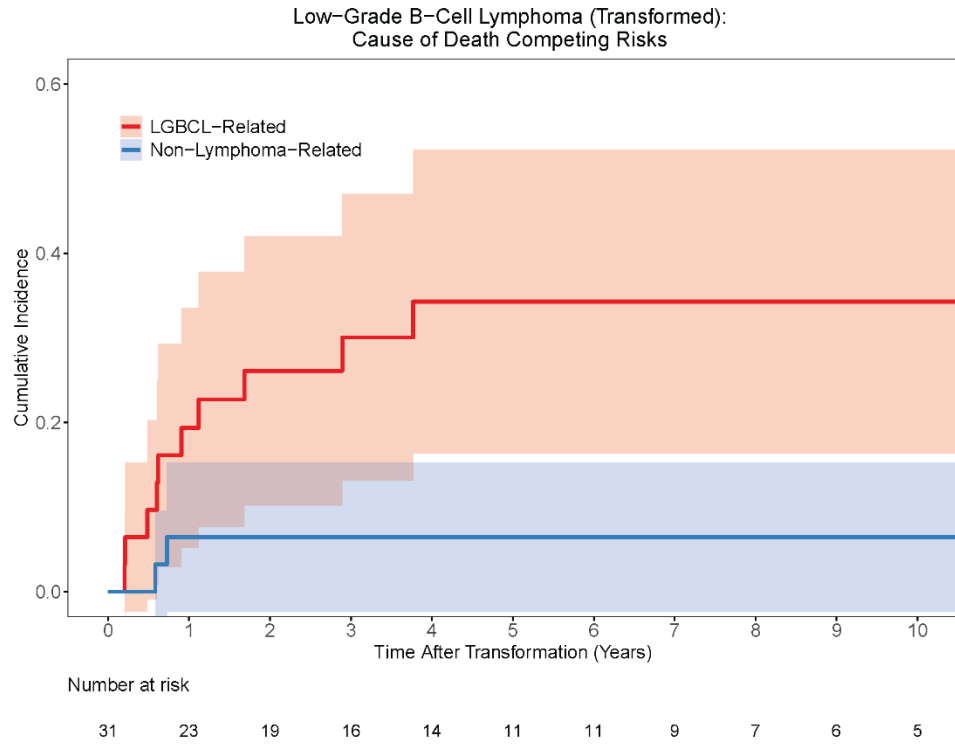


C.

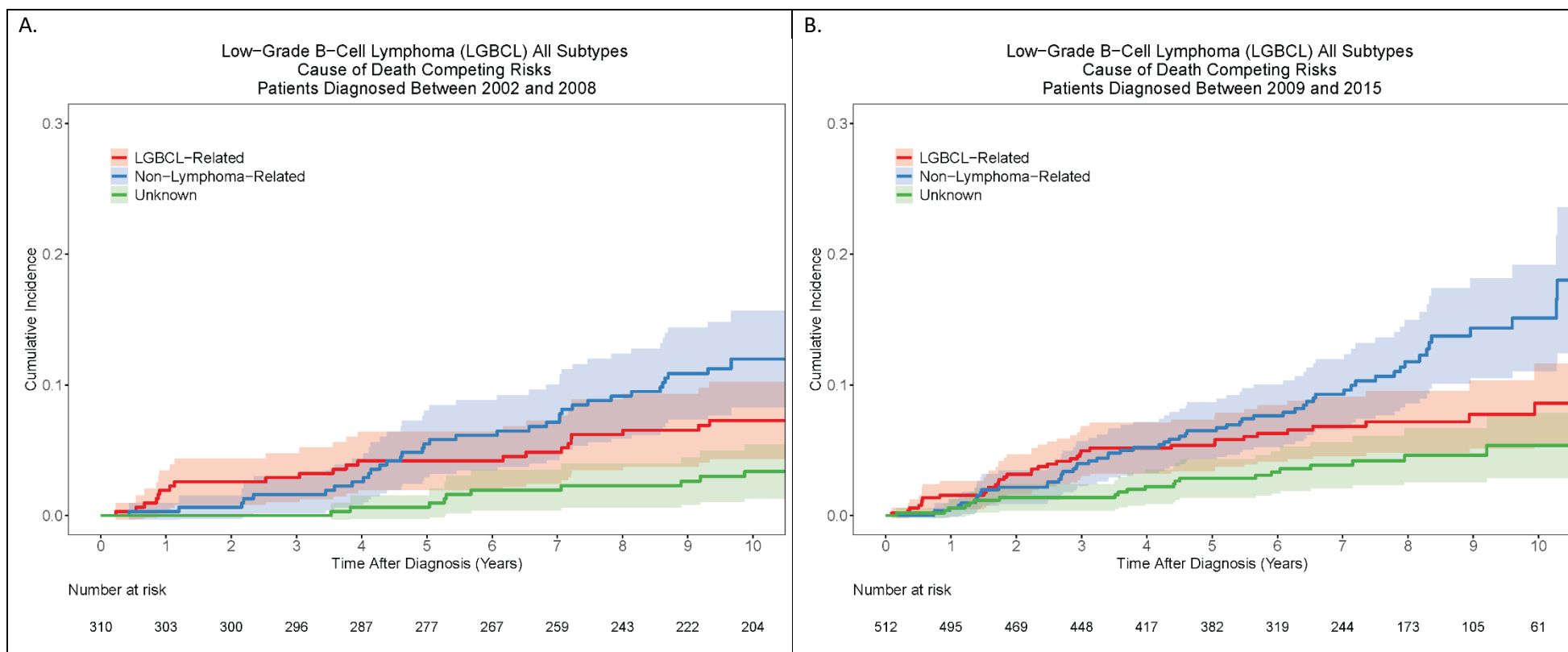
Low-Grade B-Cell Lymphoma (MALTPI 2-3):
Cause of Death Competing Risks



Supplemental Figure 2: Cumulative incidence for the competing risks of cause death from the date of transformation in patients who developed transformed disease after diagnosis



Supplemental Figure 3: Cumulative incidence for the competing risks of cause of death by date of diagnosis. (A) Cumulative incidence by cause of death for patients diagnosed between 2002-2008. (B) Cumulative incidence by cause of death for patients diagnosed between 2009-2015.



Supplementary Table 1: Different causes of non-lymphoma related deaths in patients with low-grade B-cell lymphoma

	N (%)
Non-lymphoma related causes of death (all)	112
Medical Comorbidity	39 (35%)
Cardiac	22
Pulmonary	5
Liver	3
Neurological	6
Other	3
Other malignancy	39 (35%)
Infection (non-disease or treatment-related)	10 (9%)
Age related (>85 years)	4 (3%)
Non-lymphoma, unable to classify further	20 (18%)