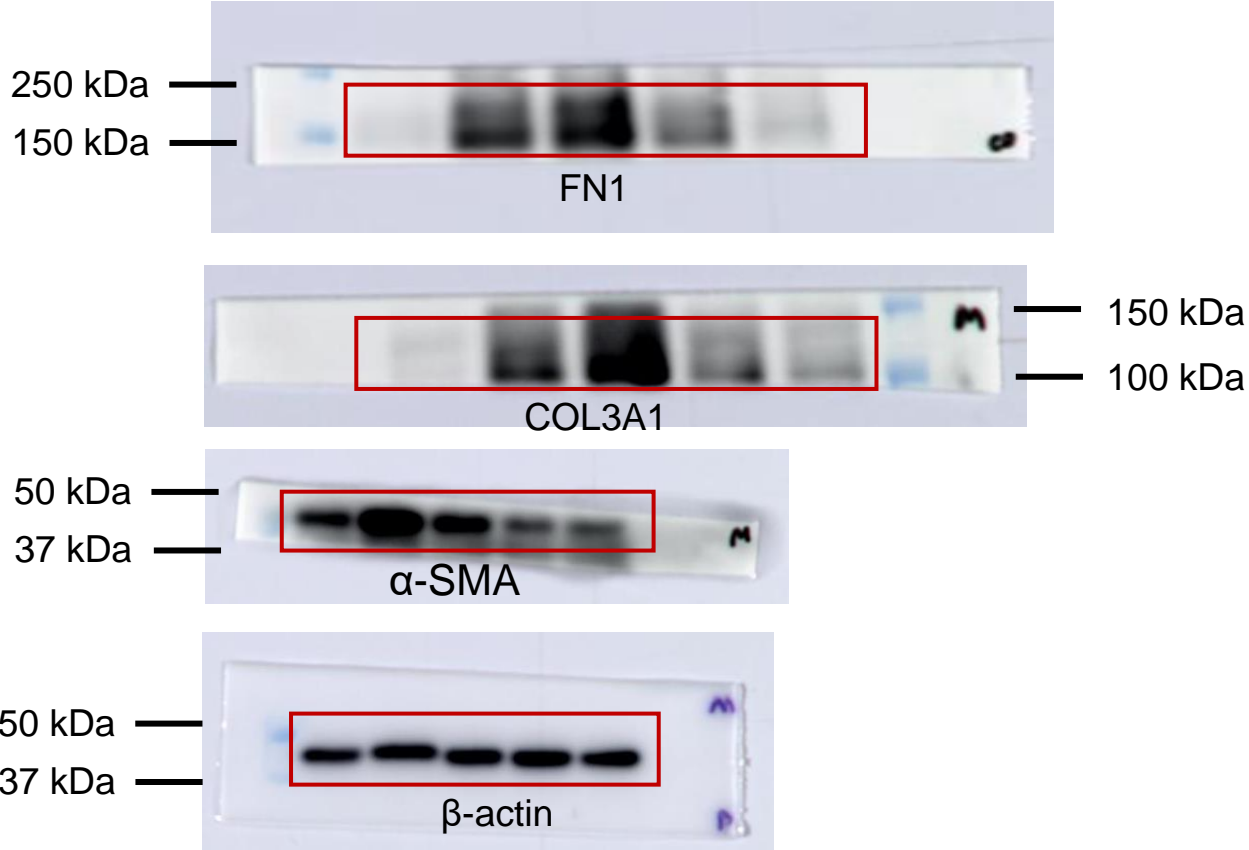


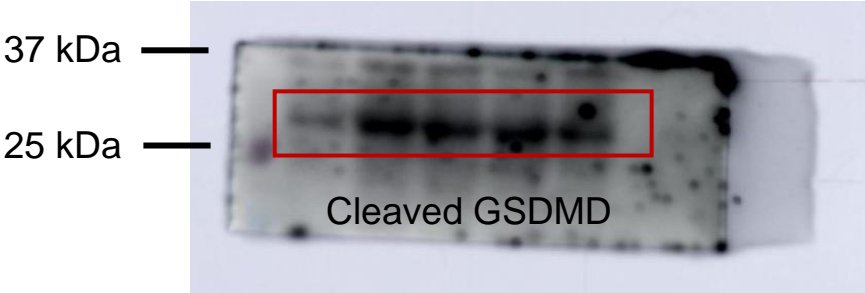
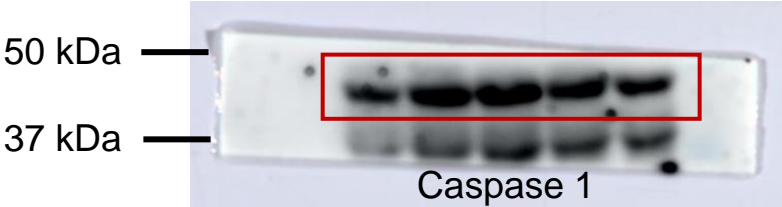
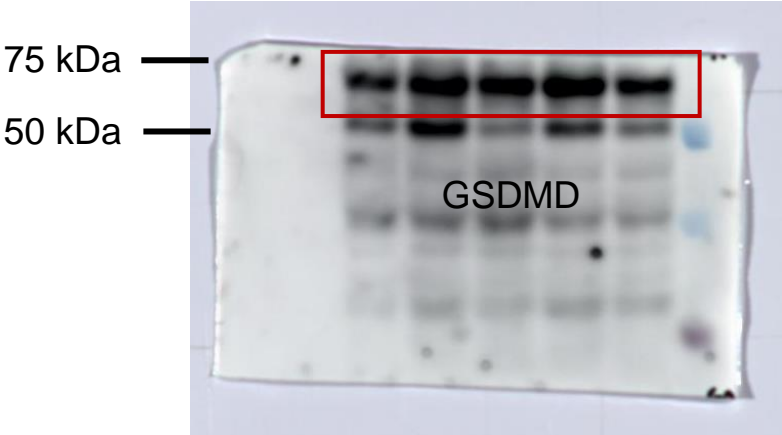
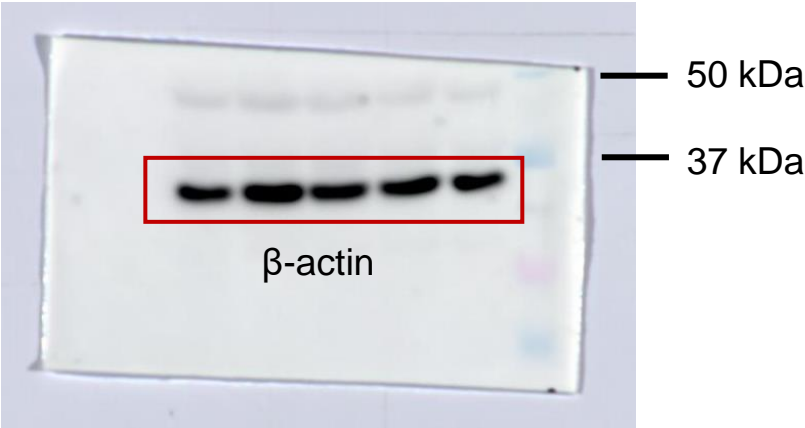
# Fig. 4A

FN1, COL3A1,  $\alpha$ -SMA, and  $\beta$ -actin were run on the same gel, cut before incubation with antibodies, and detected using a GE Amersham Imager 800 RGB (EG, USA).



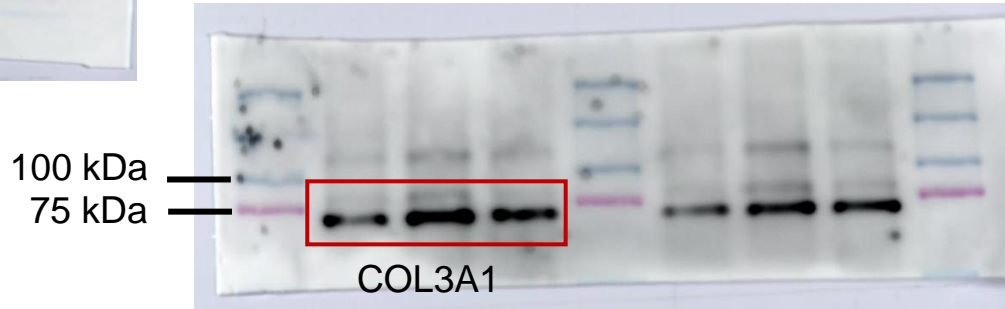
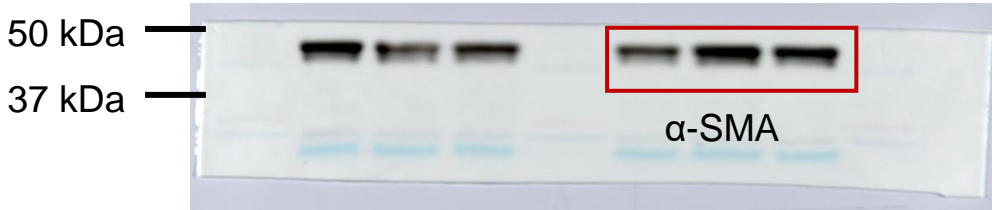
# Fig. 5A

GSDMD, Caspase 1, Cleaved GSDMD, Cleaved Caspase 1, and  $\beta$ -actin were run on the same gel, cut before incubation with antibodies, and detected using a GE Amersham Imager 800 RGB (EG, USA).



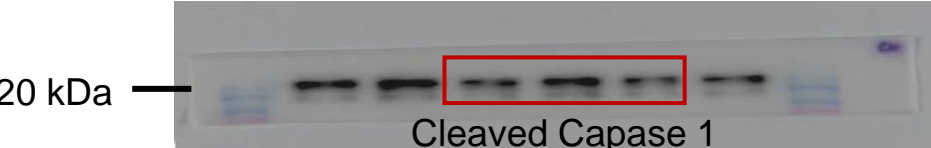
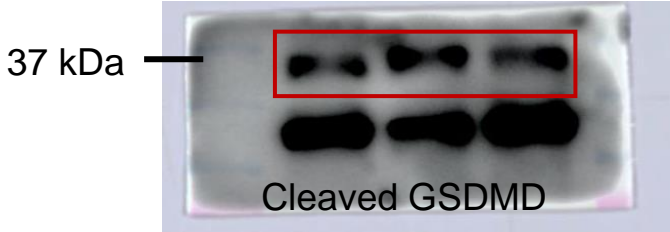
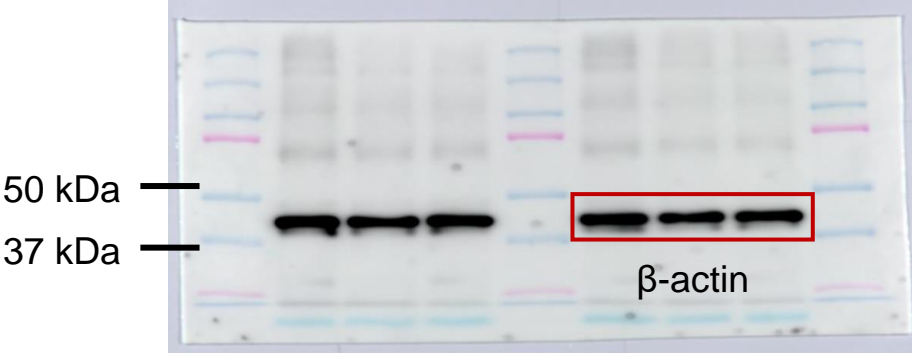
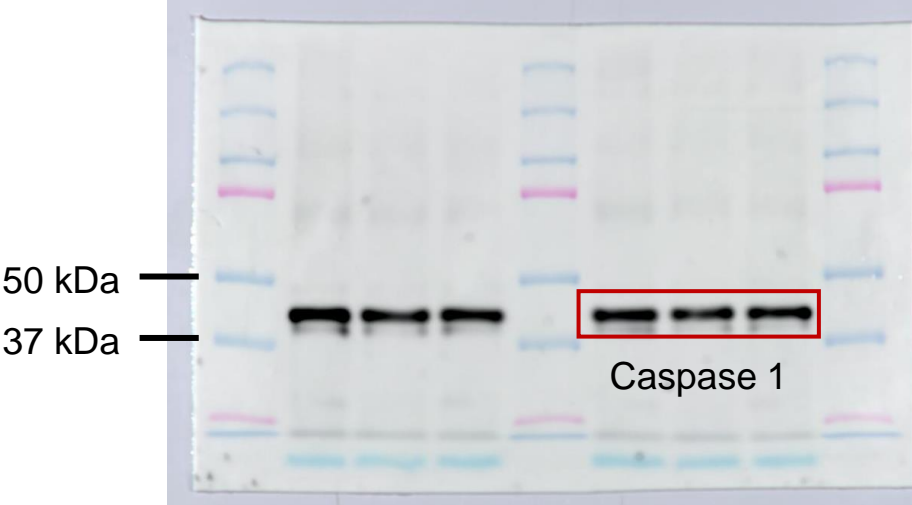
# Fig. 6A

FN1, COL3A1,  $\alpha$ -SMA, and  $\beta$ -actin were run on the same gel, cut before incubation with antibodies, and detected using a GE Amersham Imager 800 RGB (EG, USA).



# Fig. 7A

GSDMD, Caspase 1, Cleaved GSDMD, Cleaved Caspase 1, and  $\beta$ -actin were run on the same gel, cut before incubation with antibodies, and detected using a GE Amersham Imager 800 RGB (EG, USA).



## Fig. 9A

P-Smad2, Smad2, Caspase 1, Cleaved Caspase 1, and  $\beta$ -actin were run on the same gel, cut before incubation with antibodies, and detected using a GE Amersham Imager 800 RGB (EG, USA).

