

Supplementary Online Content

Dunlop H, Fitzpatrick E, Kurti K, et al. Participation of patients from racial and ethnic minority groups in phase 1 early cancer drug development trials in the US, 2000-2018. *JAMA Netw Open*. 2022;5(11):e2239884.

doi:10.1001/jamanetworkopen.2022.39884

eTable. Demographics of Participants in All Phase I Trials, Industry Funded Trials, and Trials Conducted at Academic Centers Including Trials Targeting EGFR+ Non-Small Cell Lung Cancers

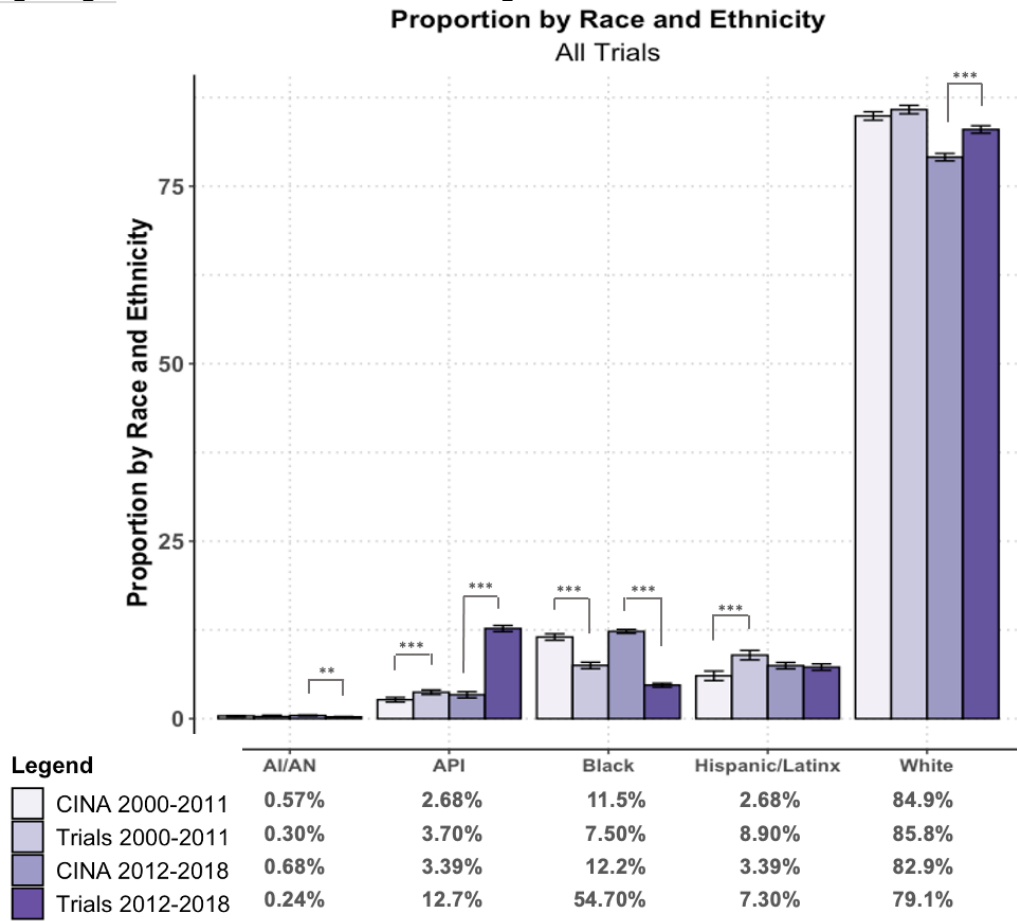
eFigure. Incidence by Race and Ethnicity in All Phase I Trials Including Trials Targeting EGFR+ Non-Small Cell Lung Cancers

This supplementary material has been provided by the authors to give readers additional information about their work.

eTable. Demographics of Participants in All Phase I Trials, Industry Funded Trials, and Trials Conducted at Academic Centers Including Trials Targeting EGFR+ Non-Small Cell Lung Cancers

	AI/AN	API	Black	H/L	White
All Phase I (n=9,273)	24 (0.26%)	870 (9.4%)	531 (5.7%)	405 (4.4%)	7560 (81.5%)
2001-2011 (n=3,387)	10 (0.3%)	126 (3.7%)	253 (7.5%)	164 (8.9%)	2906 (85.8%)
2012-2018 (n=5,880)	14 (0.24%)	744 (12.7%)	278 (4.7%)	241 (7.3%)	4654 (79.1%)
Industry (n=8,215)	20 (0.24%)	824 (10.0%)	425 (5.2%)	359 (8.2%)	6698 (81.5%)
2001-2011 (n=2,971)	10 (0.33%)	107 (3.6%)	181 (6.1%)	131 (9.4%)	2418 (86.6%)
2012-2018 (n=5,426)	10 (0.18%)	717 (13.2%)	244 (4.5%)	288 (7.7%)	4280 (78.9%)
Academic (n=7,724)	17 (0.22%)	822 (10.6%)	436 (5.6%)	392 (9.1%)	6426 (83.2%)
2001-2011 (n=2,826)	10 (0.35%)	111 (3.9%)	205 (7.3%)	139 (9.0%)	2425 (85.8%)
2012-2018 (n=5,122)	7 (0.14%)	711 (13.9%)	231 (4.5%)	163 (6.1%)	4001 (78.0%)

eFigure. Incidence by Race and Ethnicity in All Phase I Trials Including Trials Targeting EGFR+ Non-Small Cell Lung Cancers



p<0.05*,p<0.01*,p<0.001***