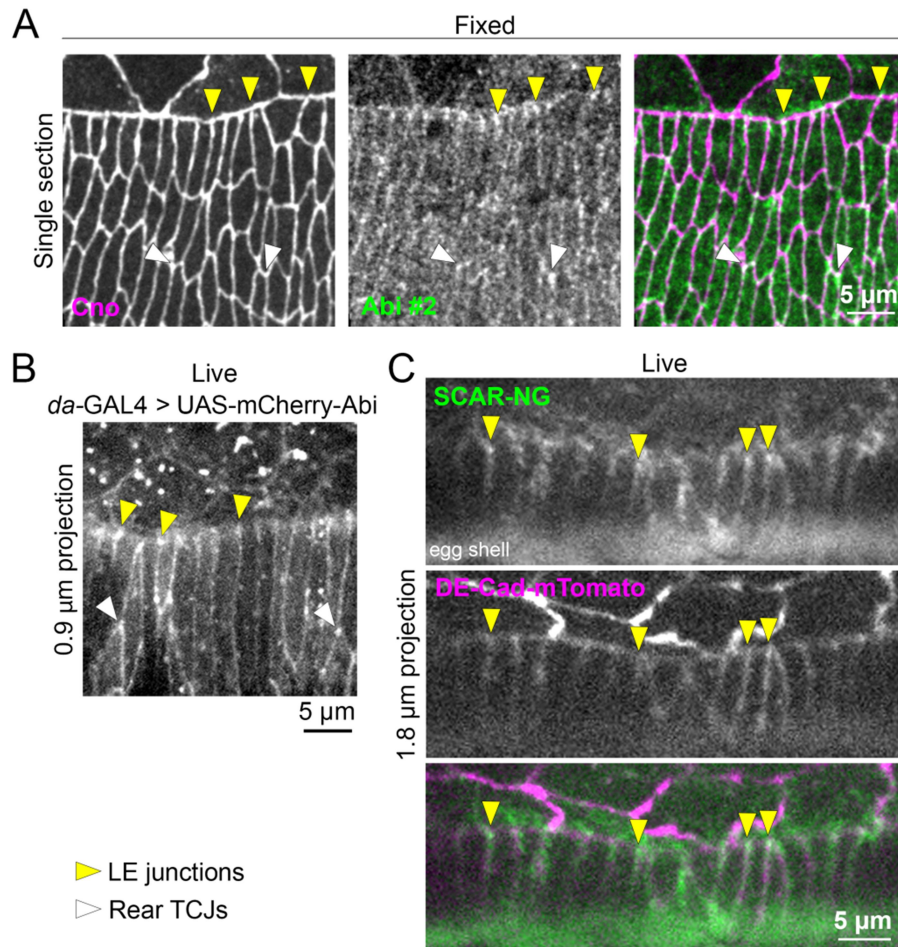


# Supplementary Materials

Molecular Biology of the Cell

Hunt *et al.*

## Supplementary figure legend



### Figure S1. SCAR/WAVE complex localization to LE junctions detected with additional probes.

(A) Abi #2 antibody staining during mid-DC. Cno antibody staining indicates AJs. Yellow arrowheads show Abi enrichments at LE junctions between epidermal cells. White arrowheads show Abi enrichments at TCJs of rear epidermis. Image representative of 15 embryos. (B) Live imaging of over-expressed mCherry-Abi. Yellow arrowheads show mCherry-Abi enrichments at LE junctions between epidermal cells. White arrowheads show mCherry-Abi enrichments at TCJs of rear epidermal cells. Image representative of 5 embryos. (C) Live imaging of endogenously expressed SCAR-neon green. Endogenously expressed DE-cad-mTomato indicates AJs. Embryo is heterozygous for each insertion allele. Yellow arrowheads show SCAR enrichments at LE junctions between epidermal cells. Egg shell also detected in neon green channel. Image representative of three embryos dual imaged for SCAR-neon green and DE-cad-mTomato, and 14 embryos expressing SCAR-neon green alone. Related to Figure 1.