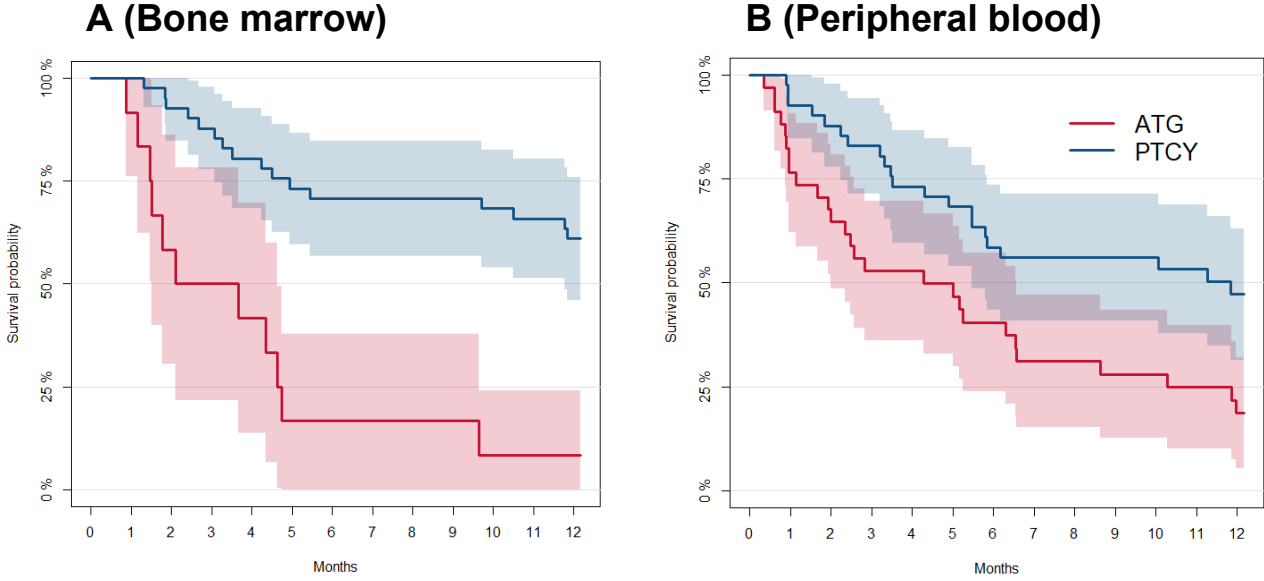


DATA SUPPLEMENT**Supplemental Table 1: Univariate Hazard Ratios for GRFS**

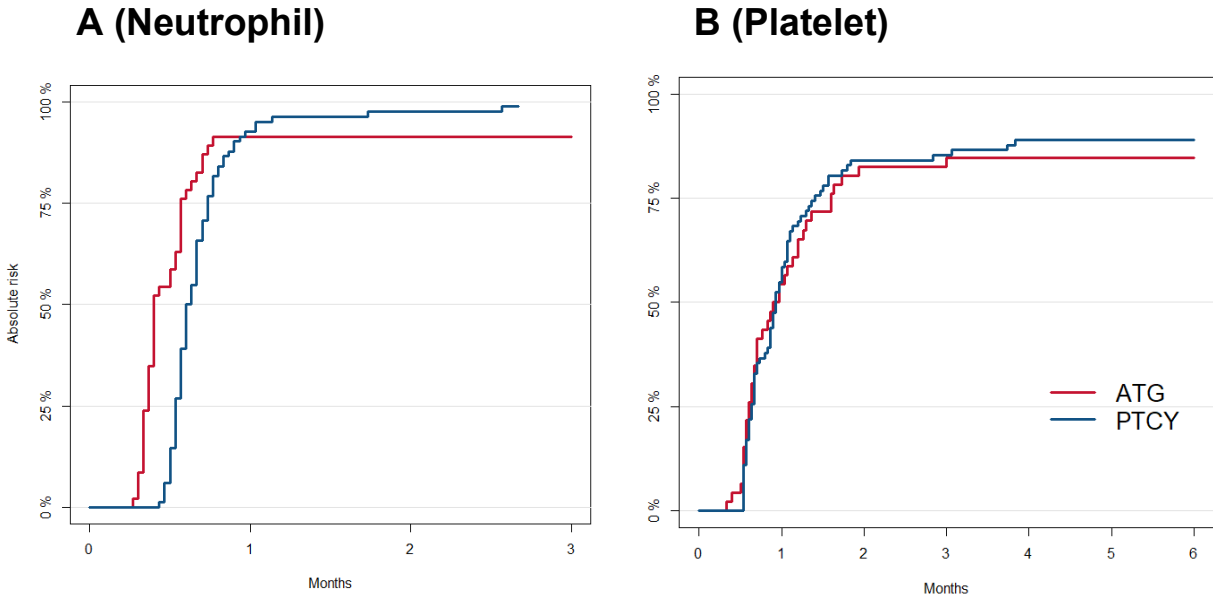
Variable	HR	95% CI	P value
GVHD prophylaxis group			
ATG	Reference		<0.001
PTCy	0.33	0.21 - 0.53	
Age	1.00	0.99 - 1.02	0.7
Recipient CMV serostatus			
Negative	Reference		0.4
Positive	1.24	0.72 - 2.13	
CIBMTR Risk			
High	Reference		0.013
Intermediate	0.51	0.30 - 0.86	
Low	0.47	0.27 - 0.81	
HCT-CI (Continuous)	0.95	0.85 - 1.06	0.3
Graft source			
BM	Reference		0.05
PB	1.58	1.00 - 2.47	
HLA-DQB1 matched donor	0.7	0.40 - 1.13	0.1

Supplemental Figure 1:



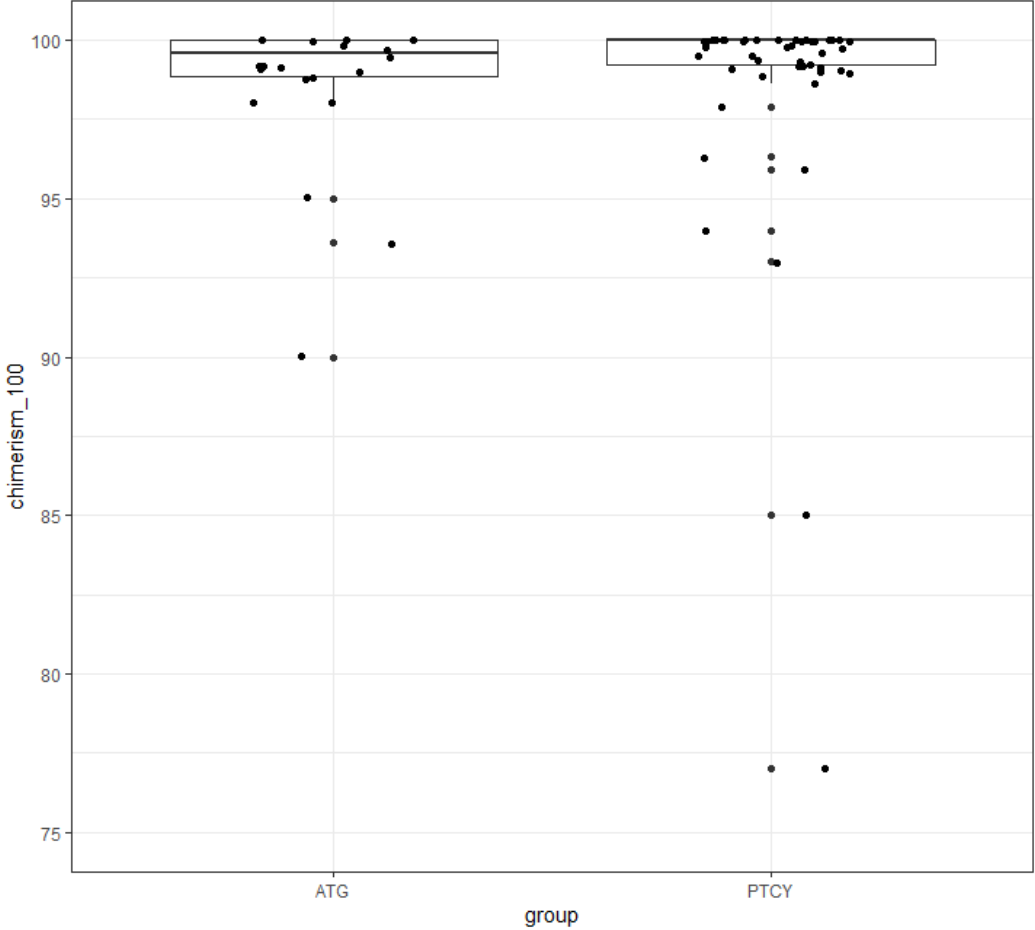
Supplemental figure 1: GRFS in subjects treated with bone-marrow derived grafts (A) and peripheral blood derived grafts (B).

Supplemental Figure 2:

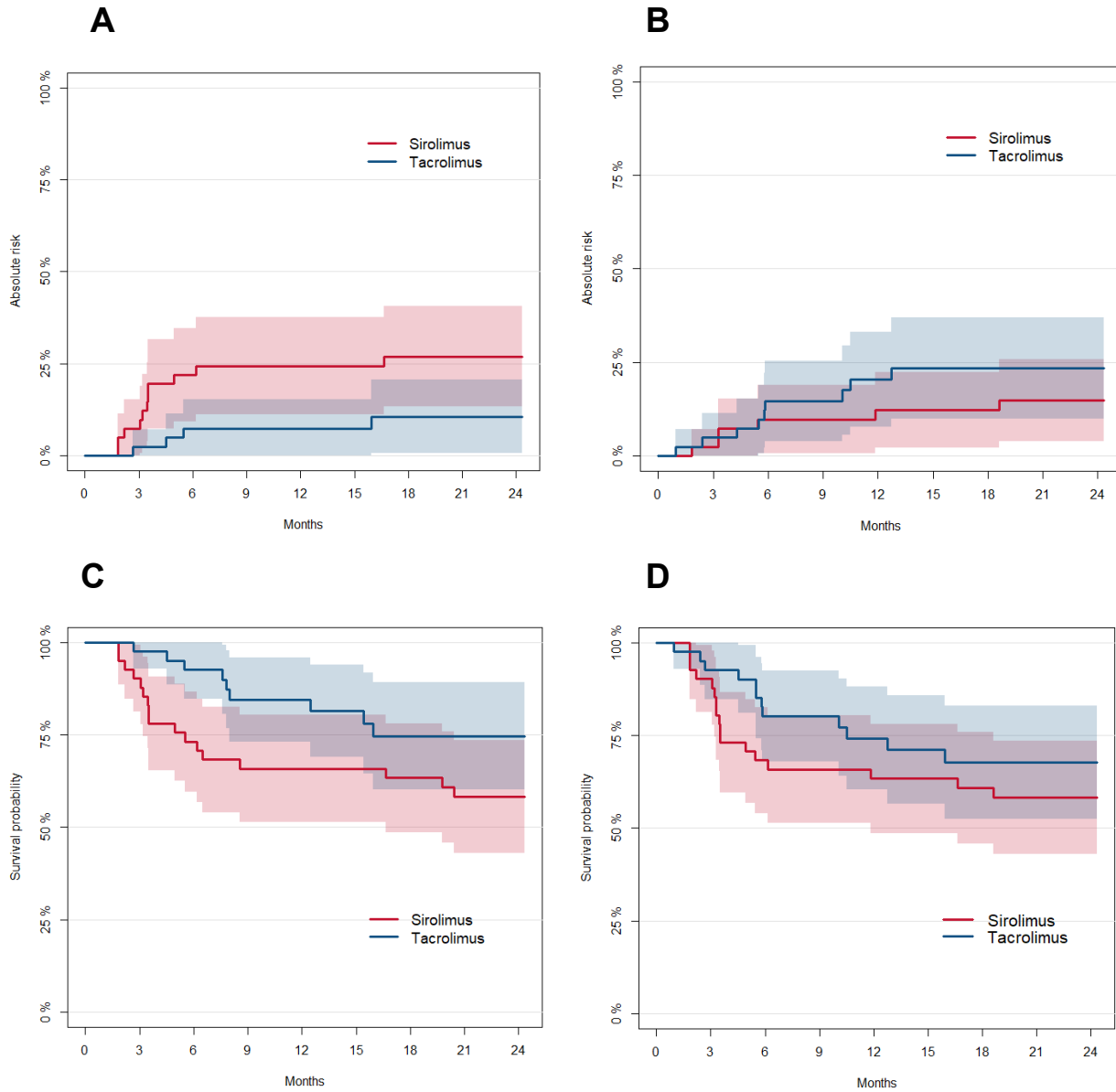


Supplementary figure 2: (A) Cumulative incidence of primary neutrophil engraftment and (B) cumulative incidence of primary platelet engraftment in subjects treated with ATG (red) or PTCy (blue).

Supplemental Figure 3: Day 100 Percent Donor STR Chimerism by Group. Median and interquartile ranges are shown.



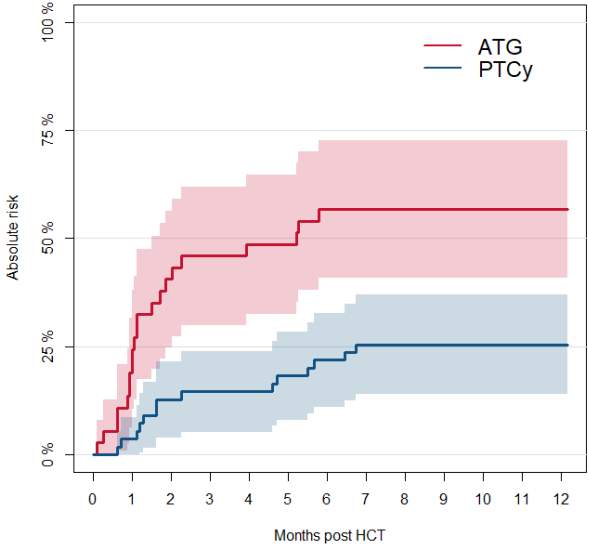
Supplementary Figure 4:



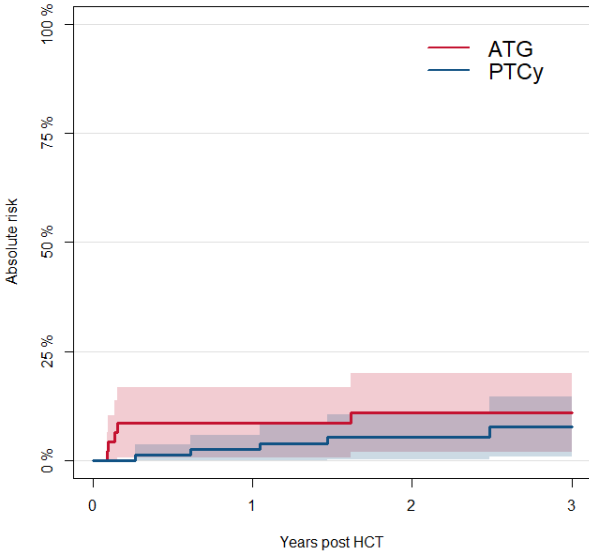
Outcomes in patients treated with PTCy with either sirolimus or tacrolimus. (A) Cumulative incidence of NRM, (B) Cumulative incidence of relapse, (C) Overall survival, (D) Event-free survival

Supplementary Figure 5:

A (CMV)



B (EBV)



Supplementary figure 5: Cumulative incidence of clinically significant CMV infection in seropositive recipients (A) and EBV infection including the entire cohort (B)