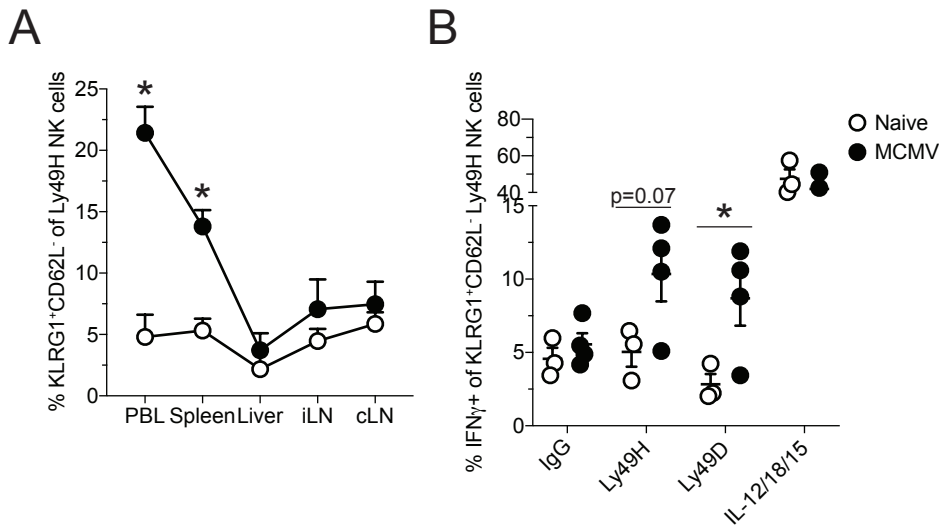
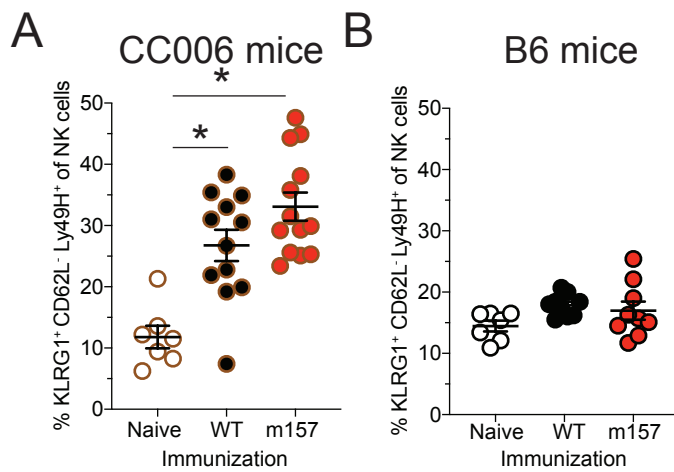


Supplemental Figure 1: Phenotype and genotype of CC006 mice. (A) Image of CC006 mouse. **(B)** Genetic founder composition of CC006 mice. **(C)** Genetic founder composition of *Ly49H* locus in CC006 mice.

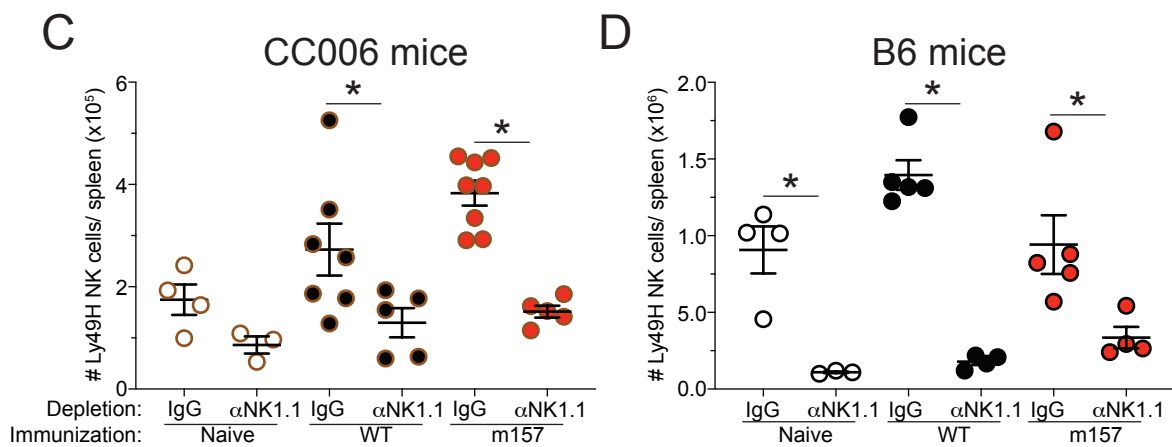


Supplemental Figure 2: Long-term maintenance and function of adaptive NK cells in CC006 mice. The frequency of (A) KLRG1⁺ CD62L⁻ cells among Ly49H NK cells [in the PBL, spleen, liver, iLN, and cLN] and (B) IFN γ ⁺ of splenic KLRG1⁺ CD62L⁻ Ly49H NK cells [following stimulation with control IgG, aLy49H, aLy49D, and IL-12+IL-18+IL-15] at D200 post-infection MCMV infected and age-matched naïve mice. Data are from a single experiment with 3-4 mice per group. Error bars represent standard error of the mean. * = p-value < 0.05.

D7 post-immunization PBL



D33 post-immunization (D3 post-MCMV) Spleen



Supplemental Figure 3: Assessment of NK cell activation following immunization and determination of depletion during MCMV challenge. The frequency of KLRG1⁺CD62L⁻ Ly49H⁺ cells among NK cells at D7 post-immunization in naïve, B6 immunized, and B6-m157 immunized (A) CC006 and (B) B6 mice. The number of Ly49H NK cells per spleen of NK depleted and non-depleted naïve, B6 immunized, and B6-m157 immunized (A) CC006 and (D) B6 mice. Data are from a 1-2 experiments with 3-13 mice per group. Error bars represent standard error of the mean. *= p -value<0.05.