

Supplements

Article title: Consequences of COVID-19 Related Lockdowns and Reopenings on Emergency Hospitalizations in Pediatric Patients in Denmark during 2020-2021

Journal name: European journal of pediatrics

Authors:

Rada Faris Al-Jwadi, Department of Pediatric and Adolescent Medicine, Nordsjællands Hospital, Hillerød, Denmark
ORCID: 0000-0002-4464-0670

Elisabeth Helen Anna Mills, Department of Cardiology, Aalborg University Hospital, Aalborg, Denmark

Christian Torp-Pedersen, Department of Cardiology, Nordsjællands Hospital, Hillerød, Denmark
ORCID: 0000-0003-2892-6131

Mikkel Porsborg Andersen, Department of Cardiology, Nordsjællands Hospital, Hillerød, Denmark
ORCID: 0000-0001-6162-5205

Inger Merete Jørgensen, Department of Pediatric and Adolescent Medicine, Nordsjællands Hospital, Hillerød, Denmark and Faculty of Health and Medical Science, Department of Clinical Medicine, University of Copenhagen
ORCID: 0000-0001-5229-2381

Corresponding author:

Rada Faris Al-Jwadi,

E-mail: rada.faris.al-jwadi@regionh.dk

Lockdown and Reopening

The political definition of Lockdown and reopening in Denmark was that all students were sent home and all teaching was done virtually. All public workers apart from critical workers were sent home or worked from home. The private sector was advised to send their workers home as well. All schools and day care facilities closed apart from special cases with children of critical workers. All non-essential shops and other cultural activities were closed. Citizens were advised to avoid use of public transport if possible and limit social contact. Certain travel restrictions were in place.

Reopening in Denmark was done in stages with added reopening every about 14 days. Recommendations of hand sanitizing, sanitizing surfaces, social distance, quarantining and testing when having symptoms were upheld during lockdown and reopening.

Table 1 ICD-10 diagnoses for infectious diseases and diseases triggered by infections

<i>Diseases</i>	<i>ICD-10 diagnose codes</i>
<i>Asthma</i>	DJ45.0-9 & DJ46.0-9
<i>Asthmatic Bronchitis (AB)</i>	DJ40.0-9, DJ20.0-4/6-9, DJ21.0-9 & DJ409
<i>Upper respiratory tract infections (URTI)</i>	DJ06.0-9, DJ171, DB27.0-9, DB34.0-4 excl. DB342A, DJ00.0-9, DJ01.0-9, DJ02.0-9, DJ03.0-9, DJ04.0-9, DJ05.0-9, DJ09.0-9, DJ10.0-9, DJ11.0-9, DJ369 & DJ229
<i>Respiratory Insufficiency (RI)</i>	DJ960 & DJ969
<i>Respiratory Syncytial Virus (RSV)</i>	DJ21.0-9, DJ205, DB974 & DJ12.0-9
<i>Urinary Tract Infections (UTI)</i>	DN129, DN10.0-9 & DN11.0
<i>Gastrointestinal Infections (GI)</i>	DA00.0-9, DA01.0-9, DA02.0-9, DA03.0-9, DA04.0-9, DA05.0-9, DA06.0-9, DA07.0-9, DA07.0-9, DA08.0-9 & DA09.0-9
<i>Coronavirus Disease (COVID-19)</i>	DB342A & DB972A
<i>Skin Infections (Skin)</i>	DL00.0-9, DL01.0-9, DL02.0-9, DL03.0-9, DL08.0-9, DA46.0-9, DB00.0-2/6-9, DB01.0-9, DB02.0-9, DB03.0-9, DB04.0-9, DB05.0-9, DB06.0-9, DB07.0-9, DB08.0-9 & DB09.0-9
<i>Eye Infections (Eye)</i>	DA71.0-9, DA72.0-9, DB005, DB30.0-9, DH00.0-9, DH01.0-9, DH10.0-9, DH162, DH163, DH165, DH168, DH169, DH20.0-9 & DH30.0-9
<i>Ear Infections (Ear)</i>	DH60.0-9, DH65.0-9, DH66.0-9, DH67.0-9, DH68.0-9, DH69.0-9, DH70.0-9, DH750, DH730 & DH731
<i>Pneumonia</i>	DJ12.0-9, DJ13.0-9, DJ14.0-9, DJ15.0-9, DJ16.0-9, DJ17.0-9, DJ18.0-9, DJ229, DJ851 & DJ852
<i>Meningitis/Encephalitis, Sepsis and Osteoarticular Infections combined as (SI)</i>	DG00.0-9, DG01.0-9, DG02.0-9, DG03.0-9, DG04.0-9, DG05.0-9, DG06.0-9, DG07.0-9, DA39.0-9, DA40.0-9, DA41.0-9, DM46.0-9, DM00.0-9, DM01.0-9, DM86.0-9, DB003, DB004, DA83.0-9, DA84.0-9, DA85.0-9, DA86.0-9, DA87.0-9, DA88.0-9 & DA89.0-9
<i>Inflammatory Bowel Disease (IBD)</i>	DK50.0-9 & DK51.0-9
<i>Other</i>	DA15.0-9, DA16.0-9, DA17.0-1&8-9, DA18.0-8, DA19.0-2&8-9, DA20.0-3&7-9, DA21.0-3&7-9, DA22.0-2&7-9, DA23.0-3&8-9, DA24.0-4, DA25.0-1&9, DA26.0&7-9, DA270&8-9, DA28.0-2&8-9, DA30.0-9, DA31.0-1&8-9, DA32.0-1&7-9, DA339, DA359, DA36.0-3&8-9, DA37.0-1&8-9, DA389, DN300, DN308, DN309, DN390, DN410-3&8-9, DN45.0&9, DN481, DN49.0-2&8-9, DN619, DN70.0-1&9, DN71.0-1&9, DN729, DN73.0-9, DN74.0-4&8, DN750.0-1, DN76.0-4&8, DA5.0-9, DA6.0-9, DA75.0-3&9, DA77.0-3&8-7, DA77.0-3&8-9, DA789, DA79.0-1&8-9, DA420-2&7-9, DA43.0-1&8-9, DA44.0-1&8-9, DA48.0-4&8, DB15.0&9, DB16.0-2&9, DB17.0-2&8-9, DB18.0-2&8-9, DB19.0&9, DB20.0&2-4, DB22.0-2&7, DB23.0-2&8, DB249, DB25.0-2&8-9, DB26.0-3&8-9, DB3.0-9, DB95.0-8, DB96.0-8, DB97.0-8, DB98.0-1, DI30.1&8-9, DI33.0&9, DI389, DI398, DI400, DJ340, DJ390, DJ391, DJ392, DJ398, DK112, DK113, DK102, DK12.0-2, DK140, DK61.0-4, DK750, DK81.0-1&8-9, DL050, DM600, DM650, DM651, DA709, DA80.0-4&9, DA81.0-1&8-9, DA82.0-1&9, DA9.2-9, DB4.0-9, DB5.0-8, DB60.0-2&8, DB649, DB7.0-9, DB8.0-3, DA49.0-3&8-9, DB349, DB348, DB999 & DJ399

Figure 1 Timeline of COVID-19 pandemic events and school holidays in Denmark in 2020

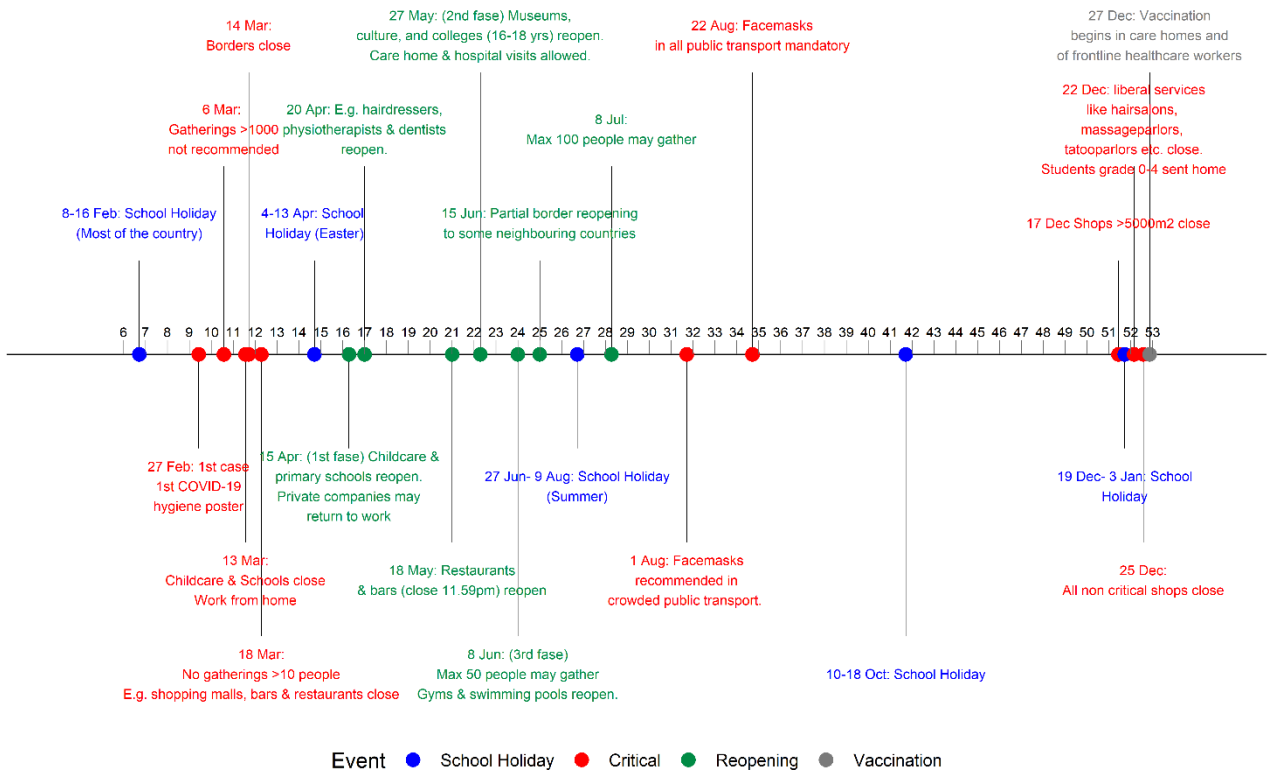


Figure 2 Timeline of COVID-19 pandemic events and school holidays in Denmark in 2021

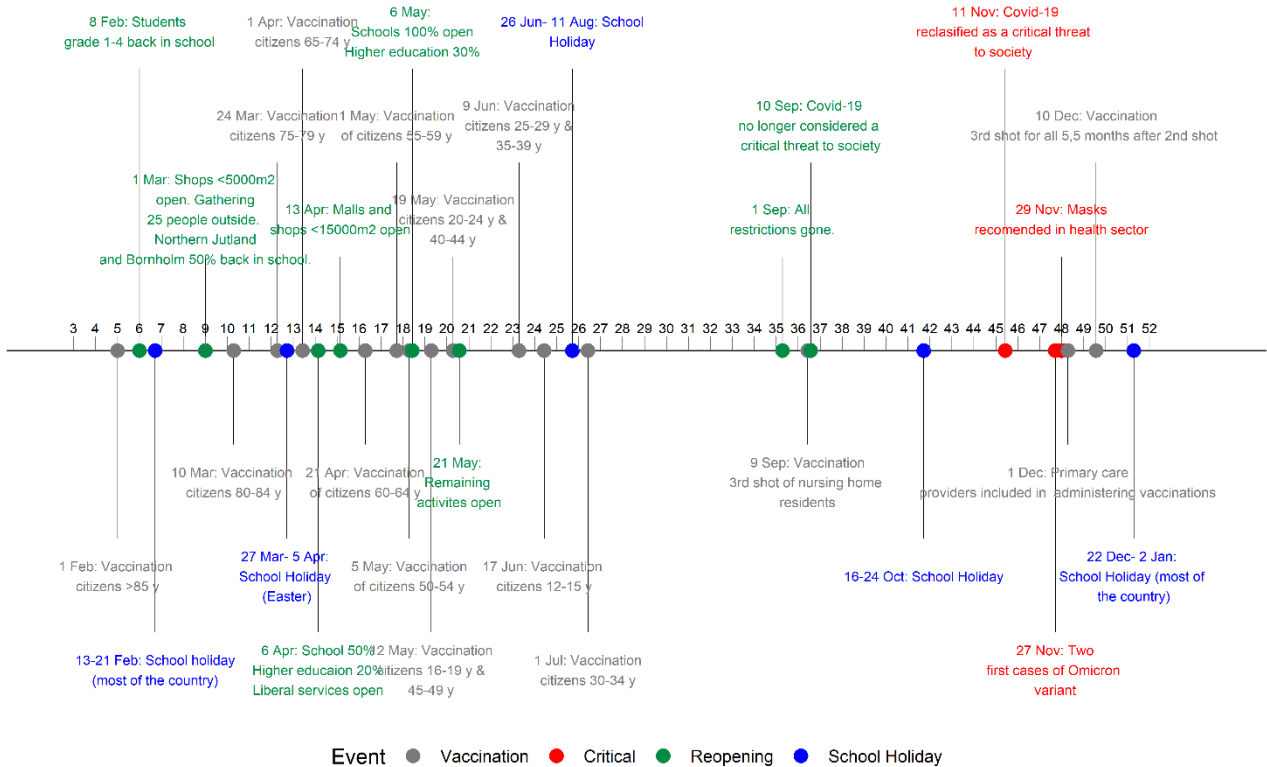


Figure 3 Respiratory tract infection hospital emergency event rates for children and adolescents during 2015-2021. Solid lines marking lockdowns. Dotted lines marking reopenings. Specifically, school reopenings are marked

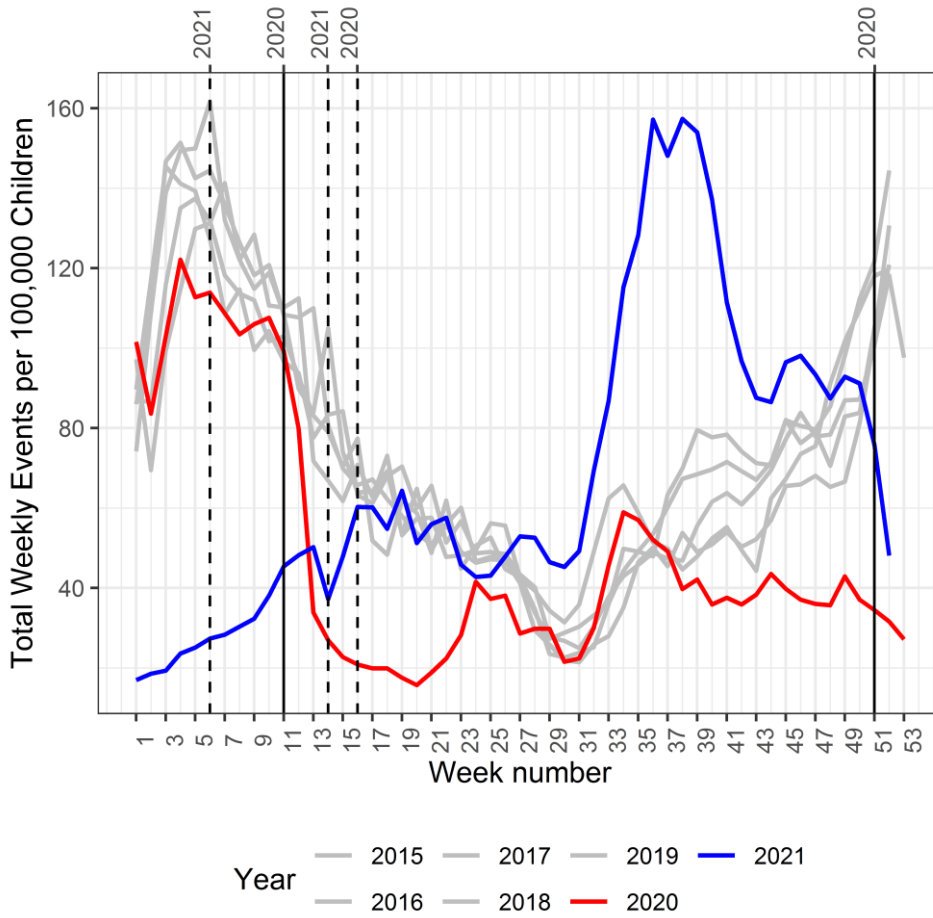


Figure 4 Selected predefined rare conditions emergency hospital events in 2020. SI is meningitis, encephalitis, osteoarticular infections and sepsis combined. IBD is inflammatory bowel disease. COVID-19 is coronavirus disease. Solid lines are marking lockdowns. Dotted lines are marking reopenings

