

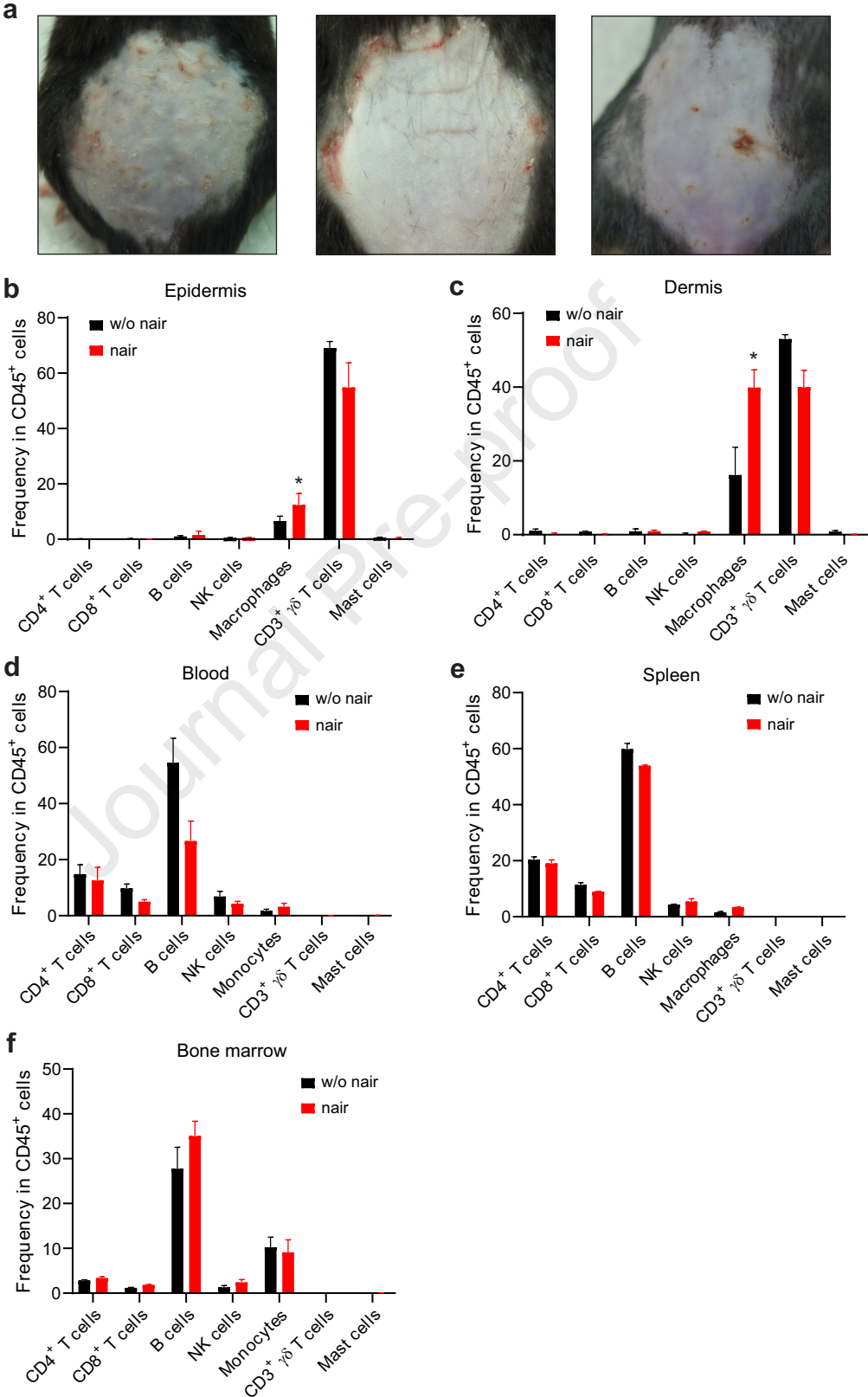
Supplementary Table 1. IPA analysis of enriched gene network

© 2000-2020 QIAGEN. All rights reserved.				
ID	Molecules in Network	Score	Focus Molecules	Top Diseases and Functions
1	ADRB,AKR1B10,Akt,ATF2,CD3G,Creb,CyclinA,E2f,E2F4,E2F7,E2F8,ERK,ERK1/2,FABP5,FOXA3,GABBR1,GLUL,H2AC6,H3C2,Histoneh3,Igm,IL18R1,KRAS,KRT16,KRT6B,LGR4,MAFB,MCM2,NFATC1,RBL2,RRM2,SFN,Stfa3,TCR,UHRF1	44	25	[Cellular Development, Cellular Growth and Proliferation, Tissue Development]
2	C15orf48,CAP1,CENPS/CENPS-ORT, CHAF1A, CHAF1B, CREBBP,CRISPLD2,CSF2,DIO2,E2F7,ERK,FABP4,FNBP1,H2AC4,H2AC7,IL10RA,IL17A,LEP,LSG1,MCM6,NME1,PAX6,PBK,PPARG,PTGER2,RB1,RRM2,SPARC,Sprr1b,STING1,TICRR,TOMM6,VDR,VEGFA,ZCCHC8	24	16	[Cellular Development, Cellular Growth and Proliferation, Hematological System Development and Function]
3	AR,CD96,CDS2,Cox5b,Csta3,CX3CL1,CYP26B1,DECR1,ERK,FABP4,FBL,FOXA2,FOXO1,FOXO3,GATA2,Gcg,H1-3,HDAC1,IGF1,IL4,LCK,LEP,MTOR, MYC, POLD2, PPARA,PPARG,PPP4R2,PTPRS,RORA,RPL3L,SLC7A5,SMC3,STAT5B,YY1	20	14	[Cellular Development, Connective Tissue Development and Function, Tissue Development]
4	Akt,AKT1,AR,ASF1A,ASF1B,ATP6V0C,CDKN1B,ERK,FABP5,FOXO1,FOXO3,FOXO4,FOXP3, H3C11, HUWE1,IL17A,JAK3,LEP,MTOR,Ncoa6,NR1H4,ORMDL2,POU5F1,PPARG,RICTOR,RORC,RPN2,SLC66A3, SNX6, TGFA,TLR9, TOP1,TP53, Urah, URB2	18	13	[Cancer, Organismal Injury and Abnormalities, Tumor Morphology]
5	ADNP,AGRN,AQP3,AR,BTC,CBFA2T3,CDH13,ERK,ESR2,FABP4,FOS,FOXO3,FOXP3,H1f1,HMGB2,IL17A,IL6,INSIG1,IFN α ,KAT8,KIF21B,LEP,MAPK1,MKNK1,Ncoa6,PLA2G4F,PLA2G5,PPARA,RGS2,RORC,TAOK1,TRPM4,VEGFA,WDR61,Wfdc3	16	12	[Lipid Metabolism, Molecular Transport, Small Molecule Biochemistry]
6	ABCA3,ABHD12B,ARPC4,ATP12A,CEBPA,CREB3L4,CREM,CTNNA1,DLG4,FABP4,FMR1,FOXA2,FOXO1,FOXO3,FOXOP3,FRMD6,FSCN1,FSHB,FXR2,Gcg,IL21,ITIH5,KCNE3,LDLR,LEP,miR-9-5p, MTOR, NR4A1, NR4A2, PLCH2,PRKAA2, RDH11, SCAP, TUBB2B, VEGFA	16	12	[Carbohydrate Metabolism, Lipid Metabolism, Molecular Transport]
7	ANG,Defb3,DUSP16,EGLN,EIF2S1,ERK,FABP4,FLRT3,FOXO3,FOXP3,GATA3,GCLC,GCLM,GNA12,GSTA3,H2AC8,IL17A, IL1R2,Lce3a (includes others), LEP, MTOR,NARS1, NBR1, NCK1, NFE2L2, NR1H4, PPARA, PPARG,RXRA,SENP6, SERPINA9, SLC30A4, SLC7A11, TNF, VEGFA	14	11	[Cardiovascular Disease, Connective Tissue Development and Function, Organismal Injury and Abnormalities]
8	Akt,BAX,BCL6,CCND2,COP1,CYBB,EGFR,ERK,ETV4,FCGR2A,FCRL1,FGF21,GADD45G,GATA3,IL17A,LCP2,Ly6a (includes others),LYAR,MAP2K4,MYB,NAA10,P38 MAPK,PLCG2,PTPN1,PTPN6,SERPINE1,SMARCA5,SOCS1,STAT6, Tgf beta,TIMM9,TMEM176B,TNFSF11,TP53,ZNF442	8	7	[Cellular Development, Cellular Growth and Proliferation, Hematological System Development and Function]

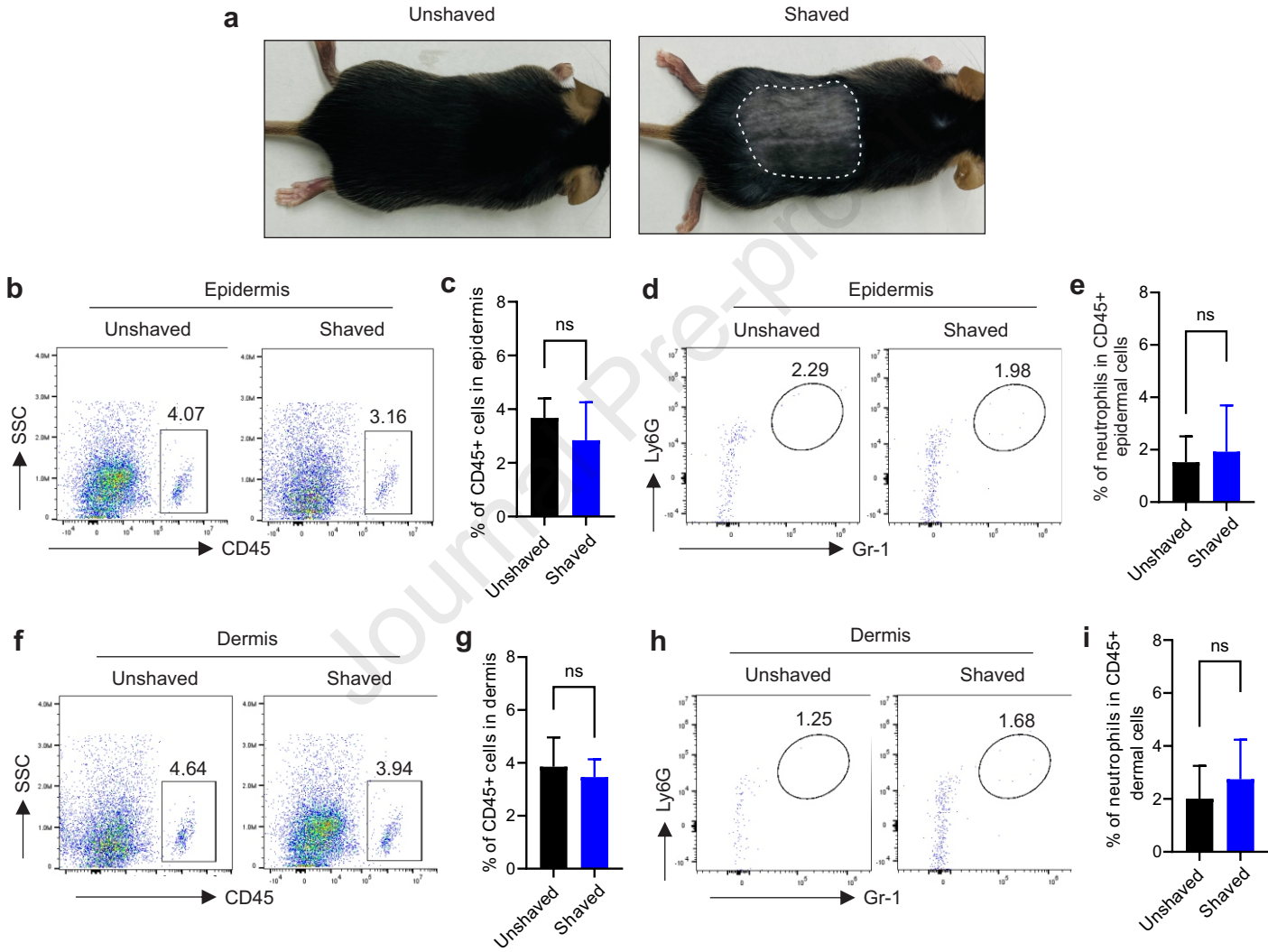
Supplementary Table 2. Real time PCR primers used in paper

HPRT	forward: 5'-AGCCTAAGATGAGCGCAAGT -3' reverse: 5'-TACTAGGCAGATGGCCACA-3
Alox5	forward: 5' -CTGCTGGACAAGGCATTCTA-3' reverse : 5' -TCCATCCCTCAGGACAATCT-3'
Alox12	forward: 5'-GGCTATCCAGATTCAGCCCC-3' reverse: 5'-CCGGCTTCGCGGTTAATTT-3'
CCL2	forward: 5'-GGATTCACAGAGAGGGAAAAATGG-3' reverse: 5'-CACTCACCTGCTGCTACTCATTAC-3'
CCL17	forward: 5'-CCCATGAAGACCTTCACCTC-3' reverse: 5'-CATCCCTGGAACACTCCACT-3'
CCL22	forward: 5'-TGACTTGGGTCTTGTCTCTC-3' reverse: 5'-AAGGAAGCCACCAATGACAC-3'
CCR2	forward: 5'-TACGATGATGGTGAGCCTTG-3' reverse: 5'-GTGAGCAGGAAGAGCAGGTC-3'
COX2	forward: 5'- ACACACTCTATCACTGGCACC-3' reverse: 5' -TTCAGGGCGAAGCGTTTGC-3'
CXCL1	forward: 5'- CCGAAGTCATAGCCACACTCAA-3' reverse: 5'-GCAGTCTGTCTTCTTTCTCCGTTA -3'
CXCL2	forward: 5'-GAAGTCATAGCCACTCTCAAGG -3' reverse: 5'- CCTCCTTTCAGGTCAGTTAGC-3
CXCR2	forward: 5'- TTCTGACCCGCCCTTACTCTGT -3' reverse: 5'- CGCAGTGTGAACCCATAGCAG -3'
cPLA2G4E	forward: 5'-AGAAGCGGAAGATGGTGGTG-3' reverse : 5' -TGGCTATTATCGGTACCTCATCC-3'
cPLA2G4F	forward: 5'-ATAGCCAGAGAAAGGGTGGC-3' reverse: 5' -CAGTCGGCTTTGGACAACCTTAT-3'
FABP4	forward: 5'- TTTCTTCAAACCTGGGCGTG-3' reverse: 5'- CATTCCACCACCAGCTTGTC-3'
EFABP	forward: 5'-AACCGAGAGCACAGTGAAG-3', reverse: 5'-ACACTCCACGATCATCTTCC-3'
IL-1 β	forward: 5'-GAAATGCCACCTTTTGACAGTG -3 ' reverse: 5'- TGGATGCTCTCATCAGGACAG- 3'
IL-6	forward: 5'- CCAGCTATGAACTCCTTCTC -3 ' reverse: 5'- GCTTGTTCTCACATCTCTC- 3'
IL-8	forward: 5'-CAA ACC TTT CCA CCC CAA AT-3 ' reverse: 5-ATT GCA TCT GGC AAC CCT AC-3 '
IL-36 γ	forward: 5'- TCACGCTGACTGGGGTACT -3 ' reverse: 5'- TCCTGACTTTGGGGAGGTTTT- 3'
LTA4H	forward: 5'- GAGGTCGCGGATACTTGCTC-3' reverse: 5'- CTCCTGTGACTGGACCGTG-3'
PGE2	forward: 5'- CATCAAGATGTACGCGGTGG-3 ' reverse: 5'- CTCCACATCTGGGTCACTCC- 3'
PGI2	forward: 5'- GGTGGCGGTGACTTGTTGC-3' reverse: 5'- TCCAACGGAGGCTCACCAG-3'
PPAR α	forward: 5'- TGGTGTTTCGAGCTGTTTTG-3' reverse: 5'- CACAGAGCGCTAAGCTGTGA-3'
PPAR β	forward: 5'- CGGACCTGGGGATTAATGGG -3' reverse: 5'- GCGCAGATGGACTGCCTTTA -3'
PPAR γ	forward: 5'- GCCTATGAGCACTTCACAAGAAAT -3' reverse: 5'- GGAATGCGAGTGGTCTTCCA 3'
TNF α	forward: 5'- GAACTGGCAGAAGAGGCACT-3' reverse: 5'- AGGGTCTGGGCCATAGAACT- 3'
TXA2	forward: 5'- ACCTACTTCTTTCTCCACCACCT-3' reverse: 5'- TGATGCCCAACTTCTCCAGTC-3'

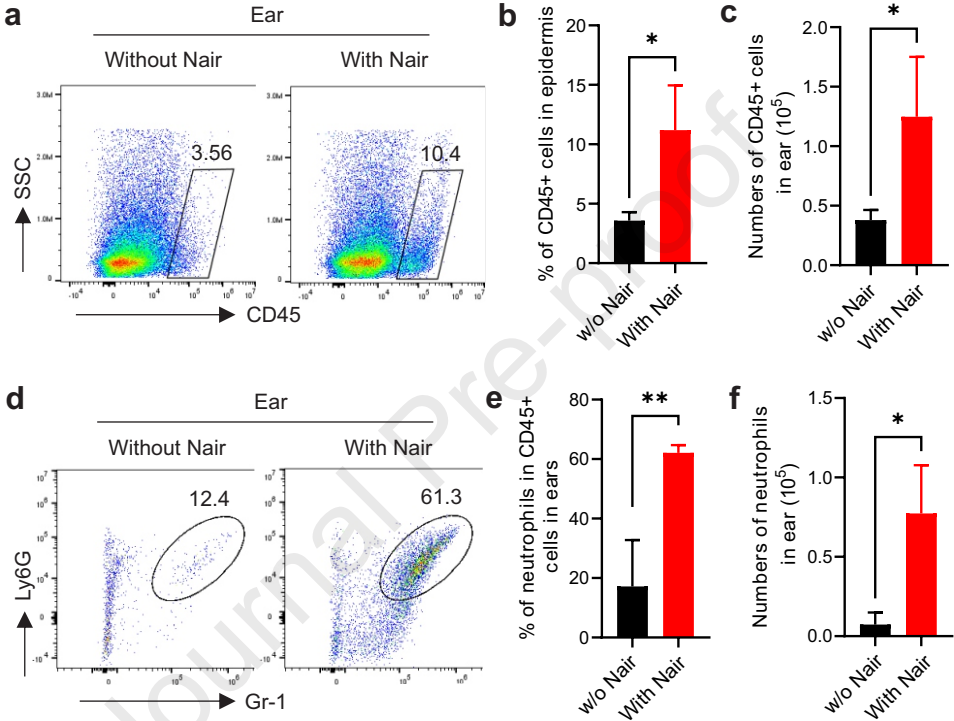
Supplementary Figure 1



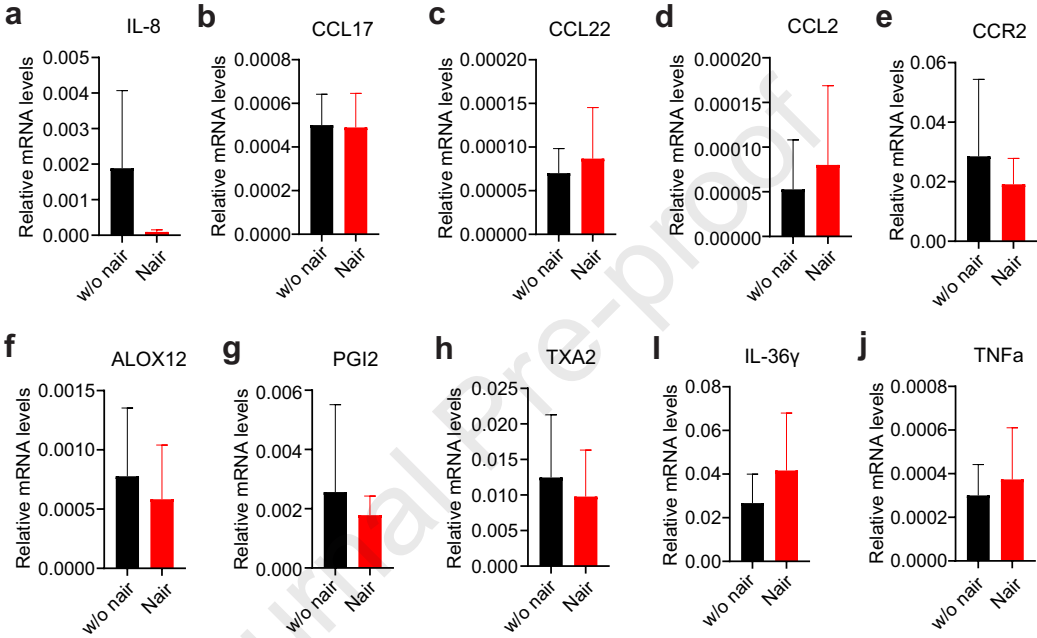
Supplementary Figure 2



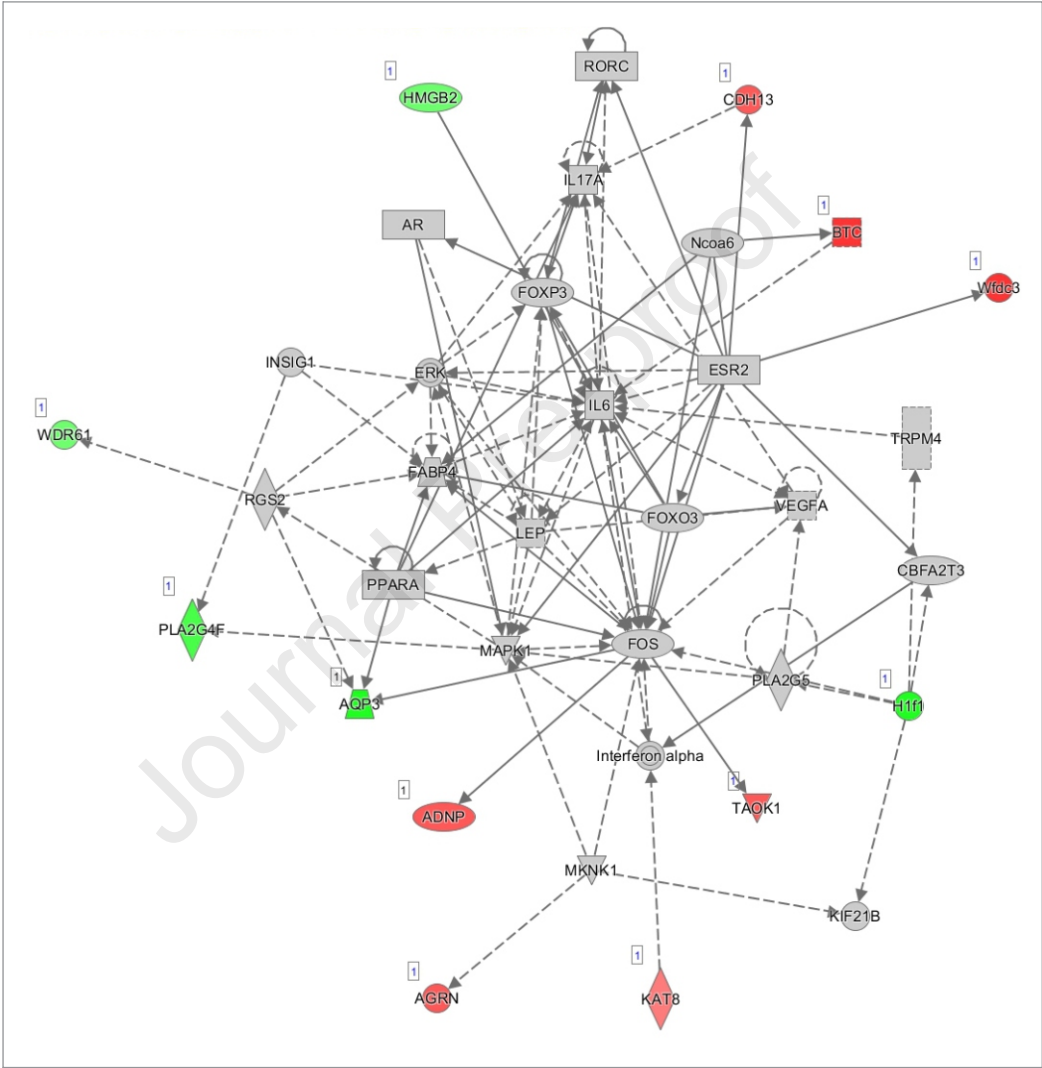
Supplementary Figure 3



Supplementary Figure 4



Supplementary Figure 5



Supplementary Figure 6

