

iScience, Volume 25

Supplemental information

**Influence of data sampling
methods on the representation of neural
spiking activity *in vivo***

Meike E. van der Heijden, Amanda M. Brown, and Roy V. Sillitoe

Figure S1. Cohen's d effect size for comparison of 100 sample durations to twenty-five representative reference durations. Figures represent the mean \pm SEM. Related to Figures 2-5.

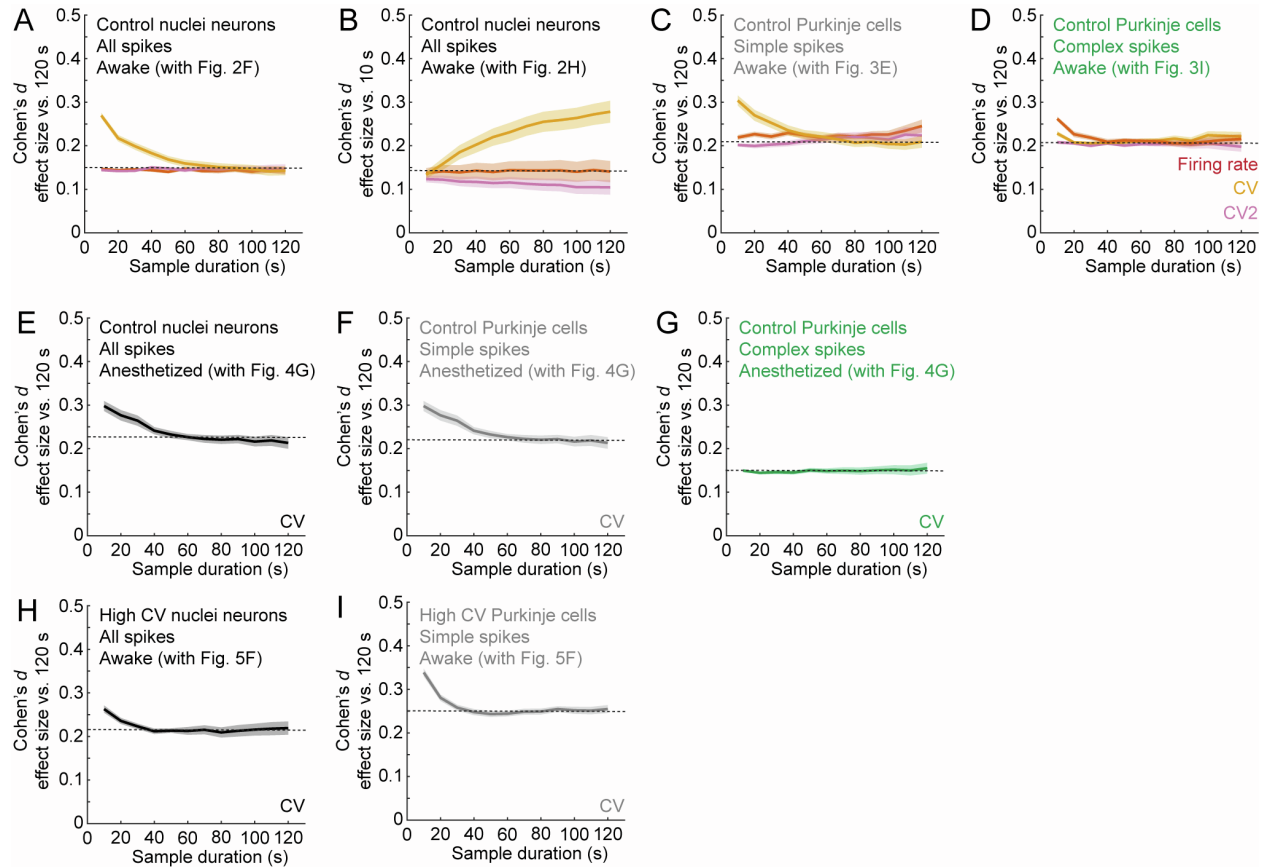


Figure S2. Relative difference in **A.** firing rate, **B.** CV, and **C.** CV2 between all nuclei neuron pairs in 21 mice. Relative difference in **D.** simple spike firing rate, **E.** simple spike CV, **F.** simple spike CV2, **G.** complex spike firing rate, **H.** complex spike CV, **I.** complex spike CV2, between all Purkinje cell pairs in 13 mice. Each row and column represent 1 cell. Thin white lines segregate cells from different mice. Related to Figures 7-8.

