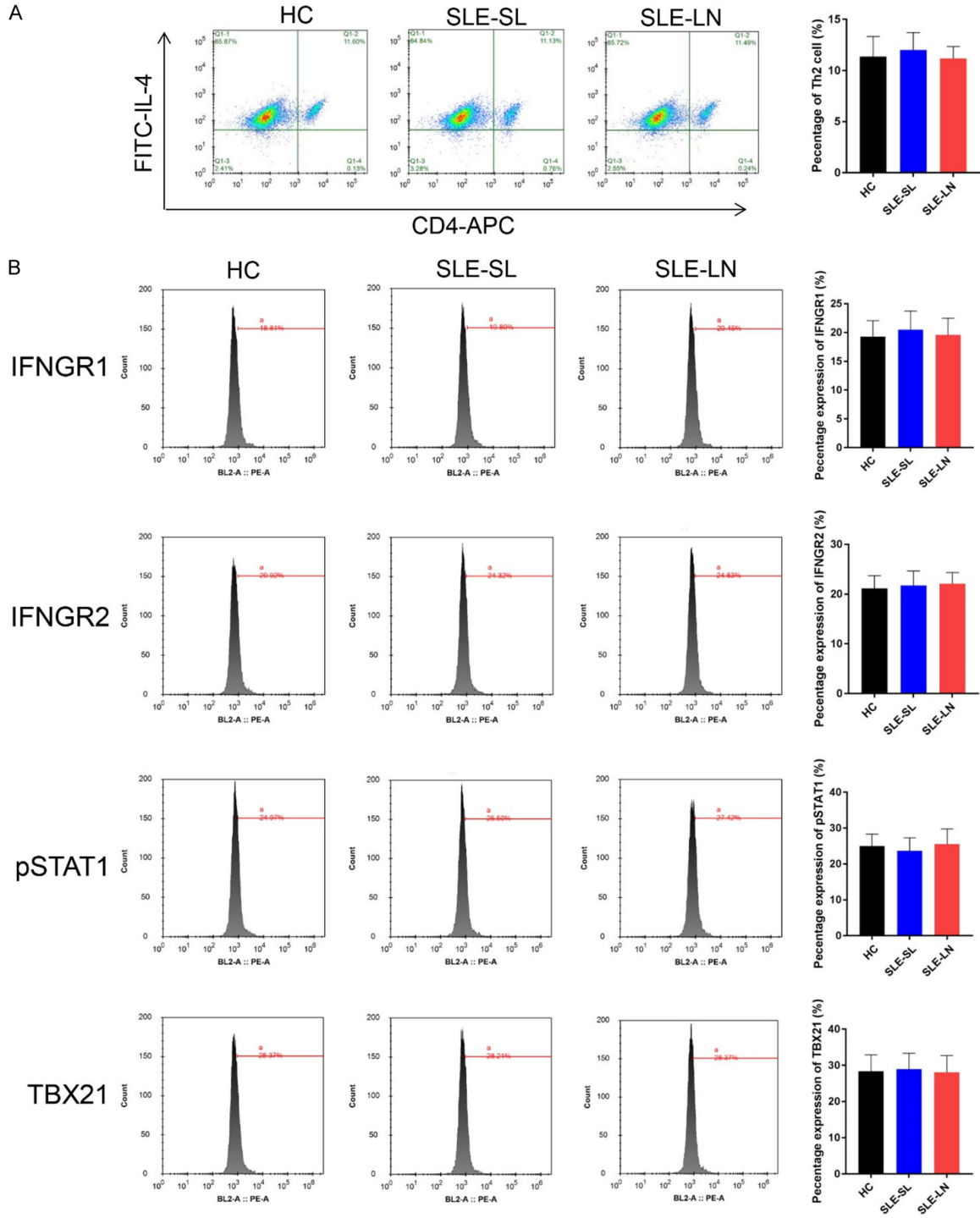
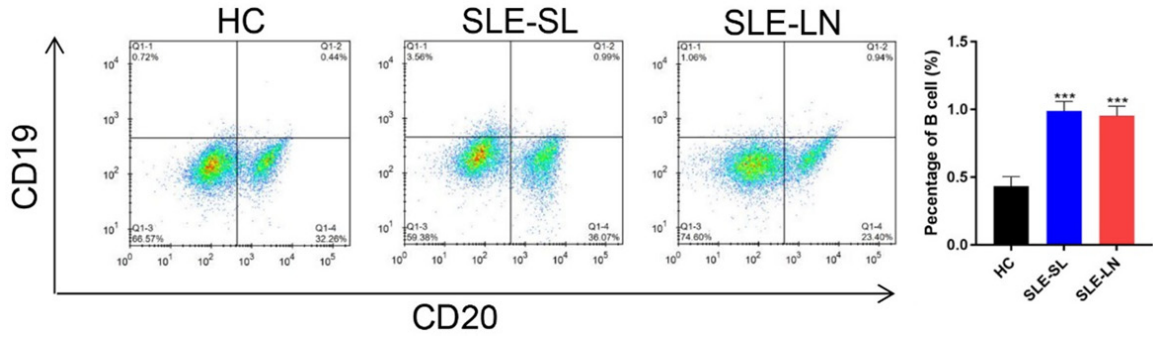


IFN- γ regulates SLE progression



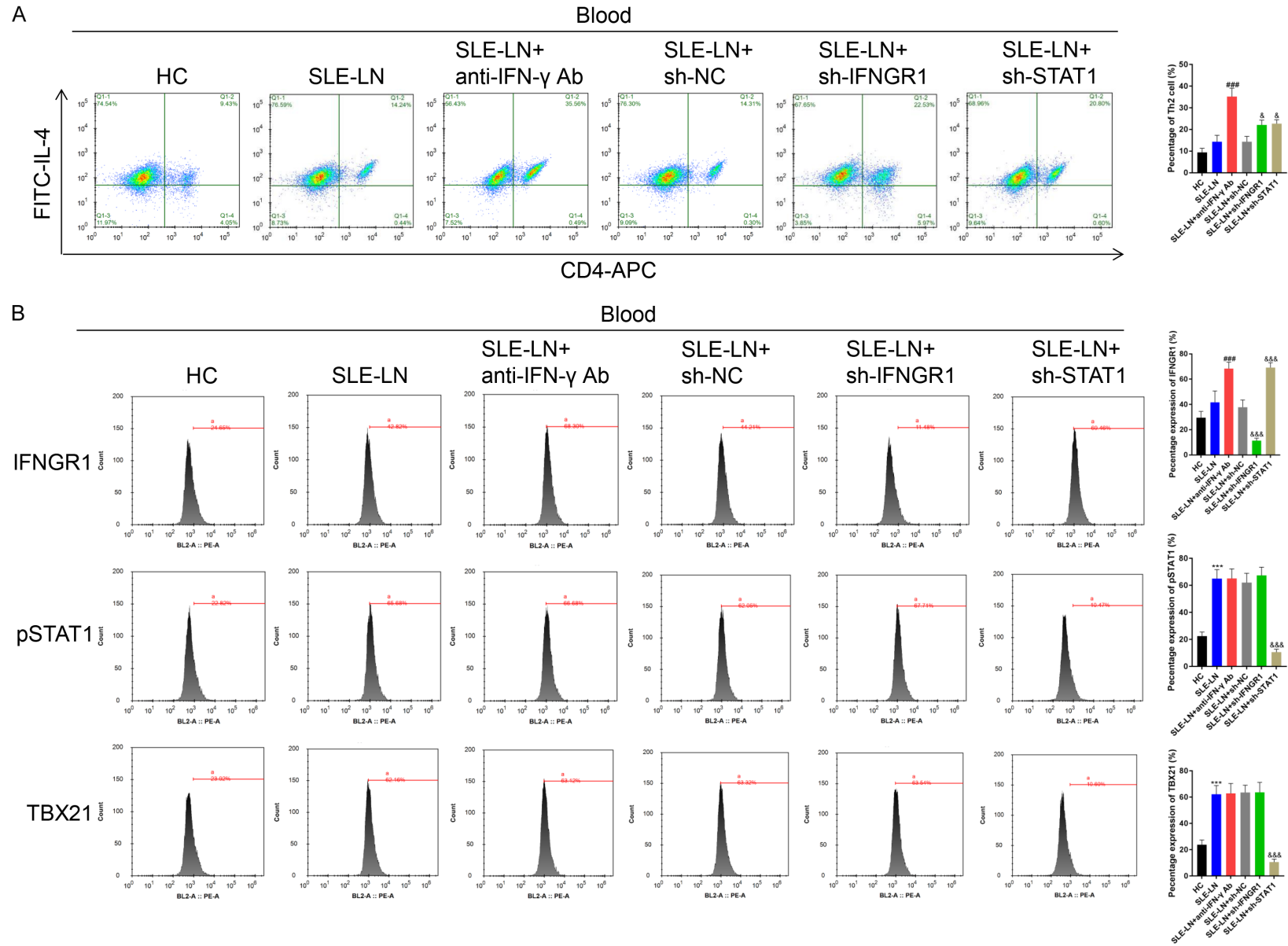
Supplementary Figure 1. Th2 cells in blood samples of SLE-SL and SLE-LN patients. A. Th2 cells in blood samples were examined through flow cytometry. B. Expressions of IFNGR1, IFNGR2, pSTAT1 and TBX21 were assessed through Flow cytometry. SLE: systemic lupus erythematosus; HC: healthy control; SL: skin lesion; LN: lupus nephritis.

IFN- γ regulates SLE progression



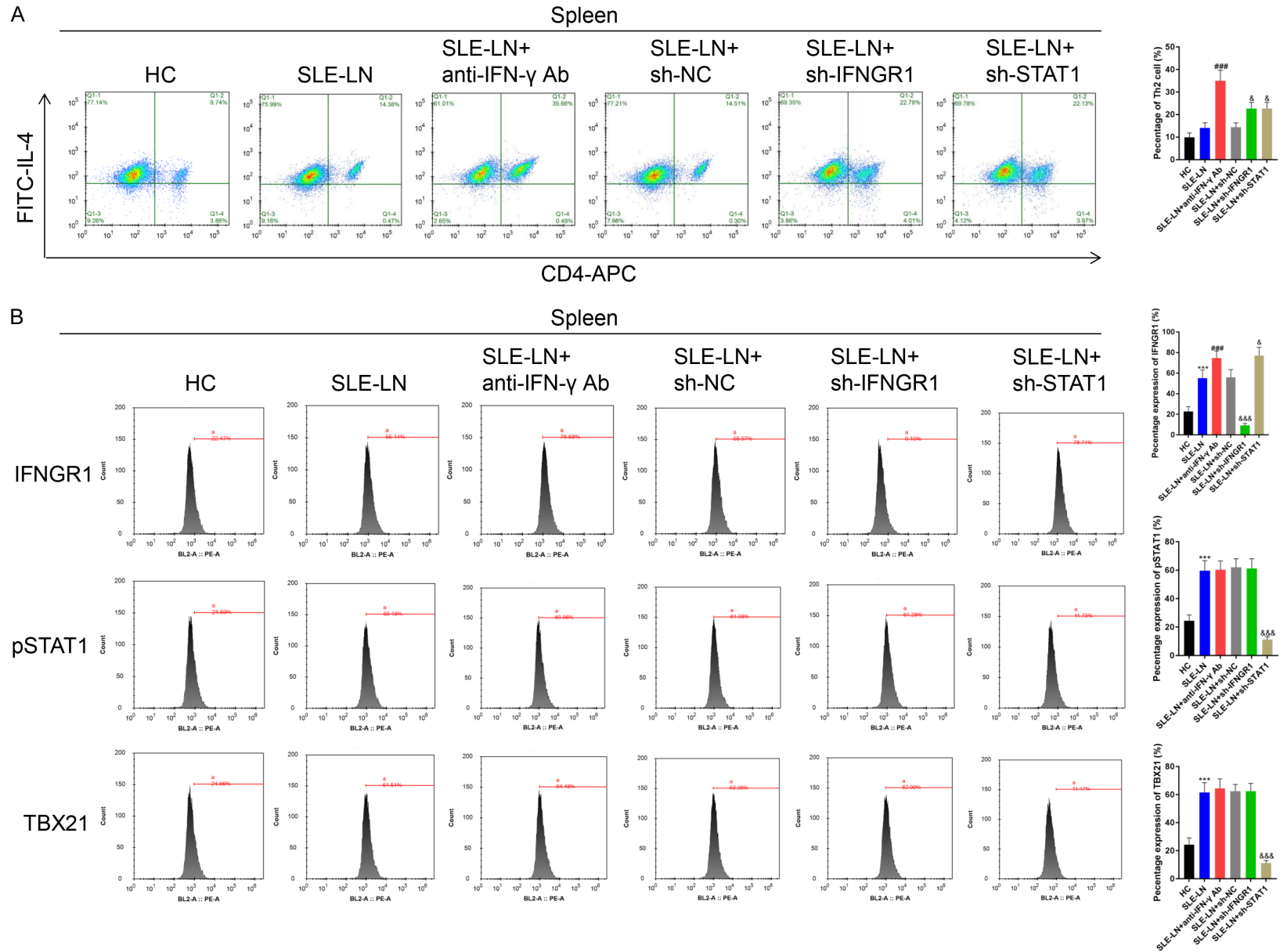
Supplementary Figure 2. B cells in blood samples of SLE-SL and SLE-LN patients. B cells in blood samples were assessed by Flow cytometry. *** $P < 0.001$ vs. HC group. SLE: systemic lupus erythematosus; HC: healthy controls; SL: skin lesion; LN: lupus nephritis.

IFN- γ regulates SLE progression



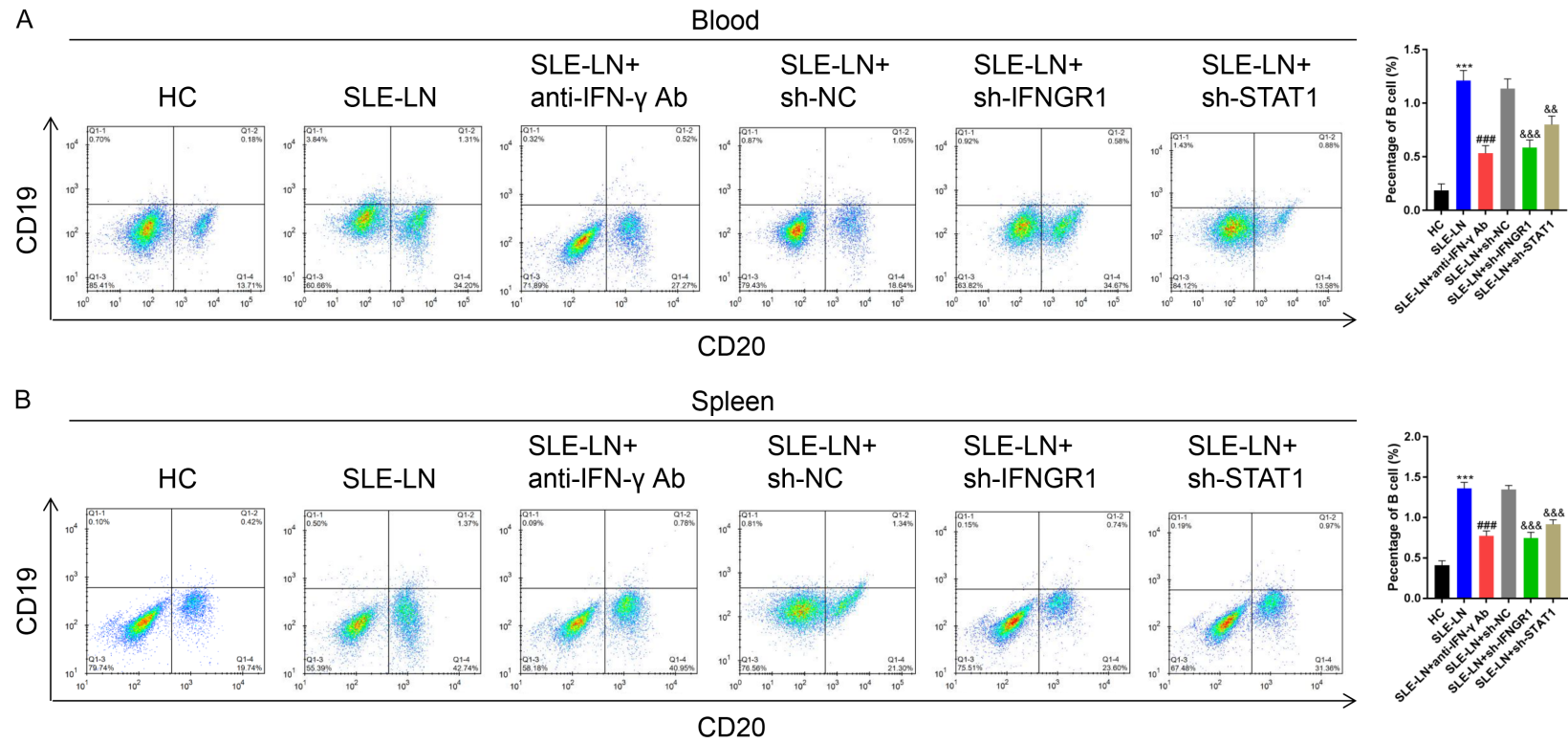
Supplementary Figure 3. Decreased Th2 cells in the blood samples from SLE mouse models. The mice were divided into the HC, SLE-LN, SLE-LN+anti-IFN- γ Ab, SLE-LN+sh-NC, SLE-LN+sh-IFNGR1 and SLE-LN+sh-STAT1 groups. n=10 mice for each group. A. Th2 cells were examined by Flow cytometry. B. Expressions of IFNGR1, pSTAT1, IFNGR2 and TBX21 measured by flow cytometry. ***P<0.001 vs. HC group; ###P<0.001 vs. SLE-LN group; &&&P<0.001 vs. SLE-LN+sh-NC group. SLE: systemic lupus erythematosus; HC: healthy controls; LN: lupus nephritis; NC: negative control.

IFN-γ regulates SLE progression



Supplementary Figure 4. Th2 cells decreased in spleen samples from SLE mouse models. A. Th2 cells in spleen samples were examined by Flow cytometry. B. Expression of IFNGR1, pSTAT1, IFNGR2 and TBX21 measured by Flow cytometry. ***P<0.001 vs. HC group; ###P<0.001 vs. SLE-LN group; &&&P<0.001 vs. SLE-LN+sh-NC group. SLE: systemic lupus erythematosus; HC: healthy controls; LN: lupus nephritis; NC: negative controls.

IFN- γ regulates SLE progression



Supplementary Figure 5. B cells increased in blood and spleen samples from SLE mouse models. A, B. B cells were assessed in blood and spleen samples through Flow cytometry. *** $P < 0.001$ vs. HC group; ### $P < 0.001$ vs. SLE-LN group; &&& $P < 0.001$ vs. SLE-LN+sh-NC group. SLE: systemic lupus erythematosus; HC: healthy controls; LN: lupus nephritis; NC: negative controls.