

## Supplemental Online Content

Hartman-Munick SM, Lin JA, Milliren CE, et al. Association of the COVID-19 pandemic with adolescent and young adult eating disorder care volume. *JAMA Pediatr*. Published online November 7, 2022. doi:10.1001/jamapediatrics.2022.4346

**eFigure 1.** Overall average and site-specific observed and model-estimated number of inpatient eating disorder admissions pre- and post-onset of the COVID-19 pandemic (N=14 sites)

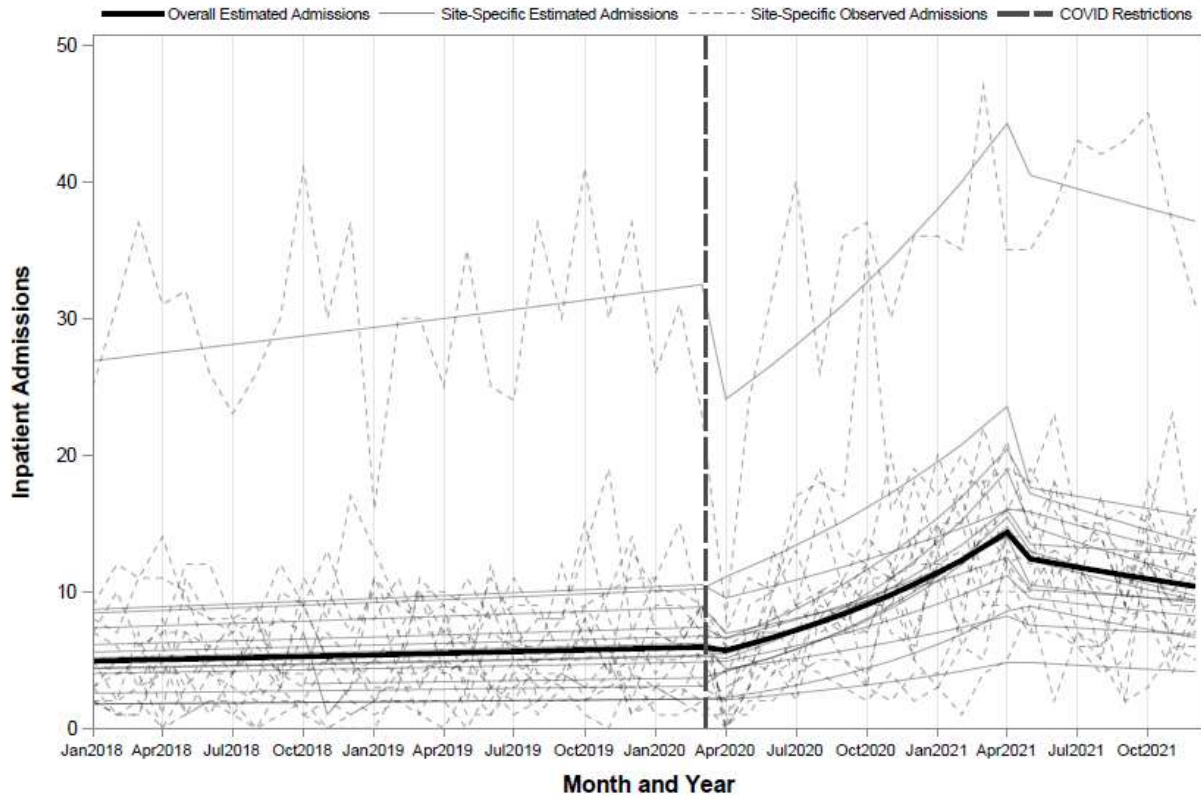
**eFigure 2.** Number of inpatient eating disorder medical admissions by site pre- and post-onset of the COVID-19 pandemic (N=14 sites)

**eFigure 3.** Overall average and site-specific observed and model-estimated number of outpatient new eating disorder assessments pre- and post-onset of the COVID-19 pandemic (N=14 sites)

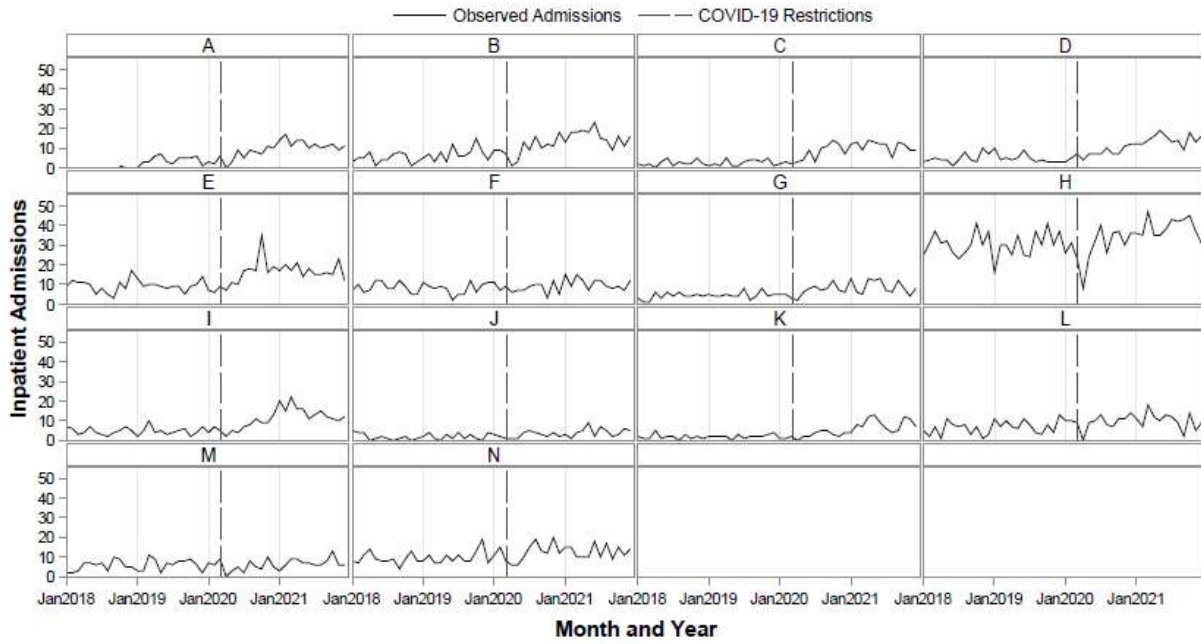
**eFigure 4.** Number of outpatient new eating disorder assessments by site pre- and post-onset of the COVID-19 pandemic (N=14 sites)

This supplemental material has been provided by the authors to give readers additional information about their work.

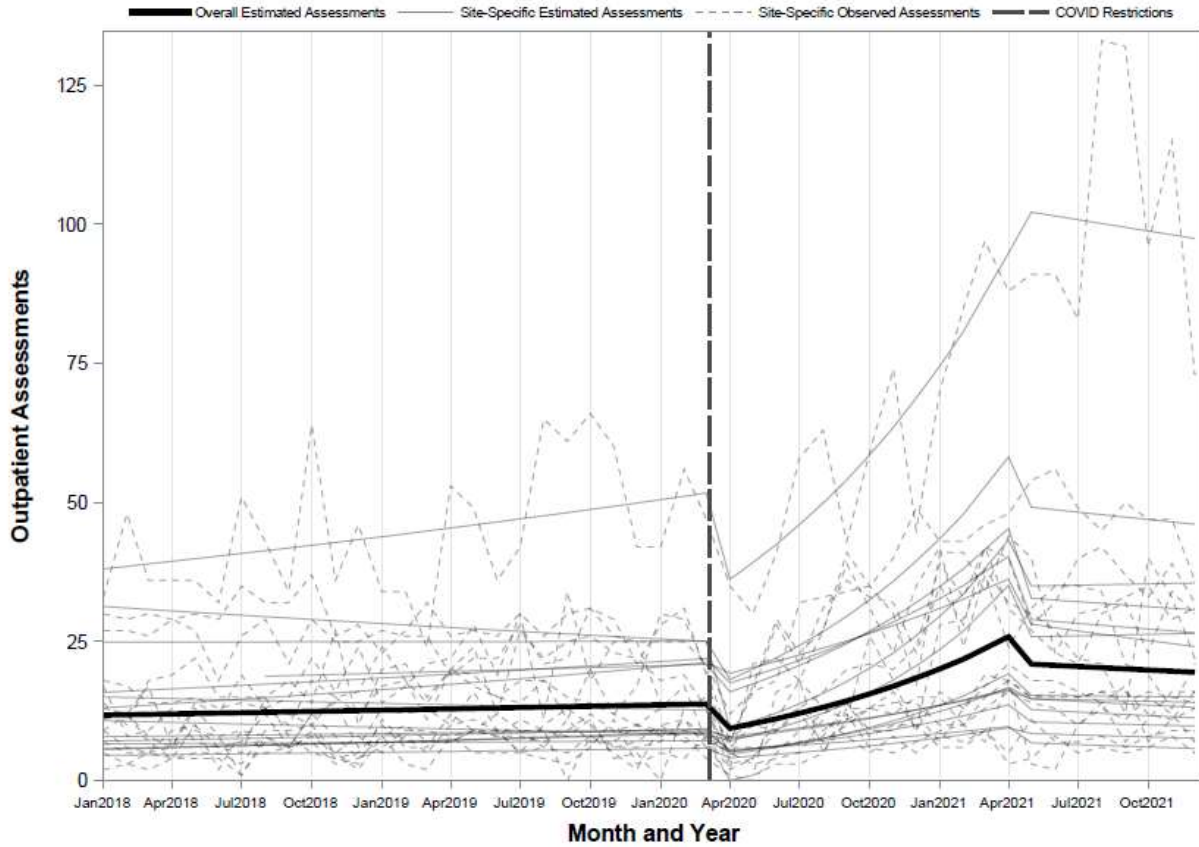
eFigure 1. Overall average and site-specific observed and model-estimated number of inpatient eating disorder admissions pre- and post-onset of the COVID-19 pandemic (N=14 sites)



eFigure 2. Number of inpatient eating disorder medical admissions by site pre- and post-onset of the COVID-19 pandemic (N=14 sites)



eFigure 3. Overall average and site-specific observed and model-estimated number of outpatient new eating disorder assessments pre- and post-onset of the COVID-19 pandemic (N=14 sites)



eFigure 4. Number of outpatient new eating disorder assessments by site pre- and post-onset of the COVID-19 pandemic (N=14 sites)

