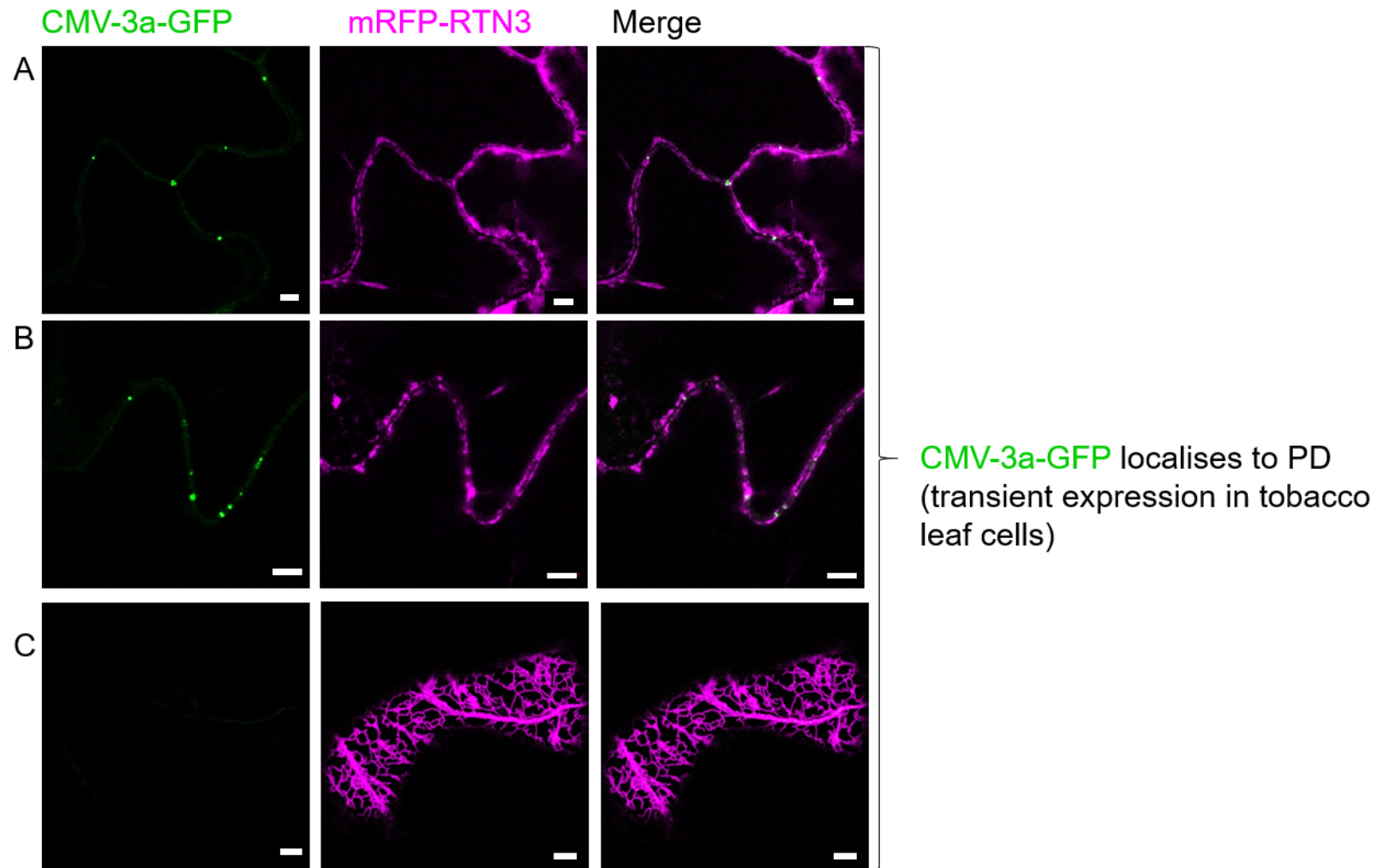


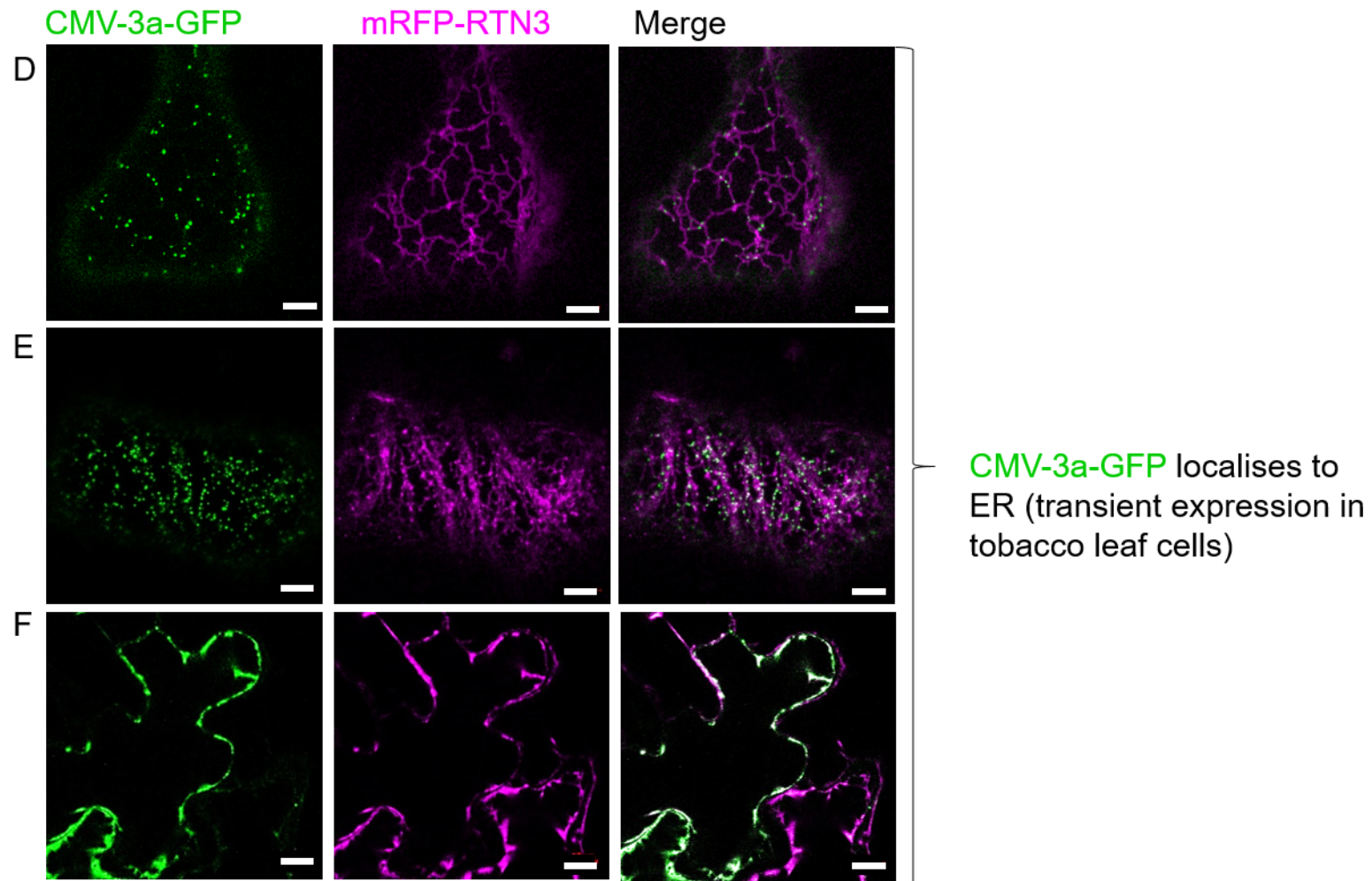
Supplementary Figure S5a



Supplementary Figure S5: Coexpression of CMV-3a-GFP and mRFP-RTN3 transiently in tobacco epidermal leaf cells.

CMV-3a-GFP (green) was coexpressed in tobacco epidermal leaf cells with mRFP-RTN3 (magenta) and the localisation analysed in n=4 biological replicas with 10 cells each. Representative example images are shown (A-F). In this system, CMV-3a-GFP localised to PD (A, B) only but not the ER (C) in 68% of cells visualised. In 32% of cells, CMV-3a-GFP was additionally also localised in dots on the ER (D, E), labelling both the peripheral ER and some PD (F). Size bars = 5 μm for A-D and = 10 μm for F.

Supplementary Figure S5b



Supplementary Figure S5: Coexpression of CMV-3a-GFP and mRFP-RTN3 transiently in tobacco epidermal leaf cells.

CMV-3a-GFP (green) was coexpressed in tobacco epidermal leaf cells with mRFP-RTN3 (magenta) and the localisation analysed in $n=4$ biological replicas with 10 cells each. Representative example images are shown (A-F). In this system, CMV-3a-GFP localised to PD (A, B) only but not the ER (C) in 68% of cells visualised. In 32% of cells, CMV-3a-GFP was additionally also localised in dots on the ER (D, E), labelling both the peripheral ER and some PD (F). Size bars = 5 μm for A-D and = 10 μm for F.