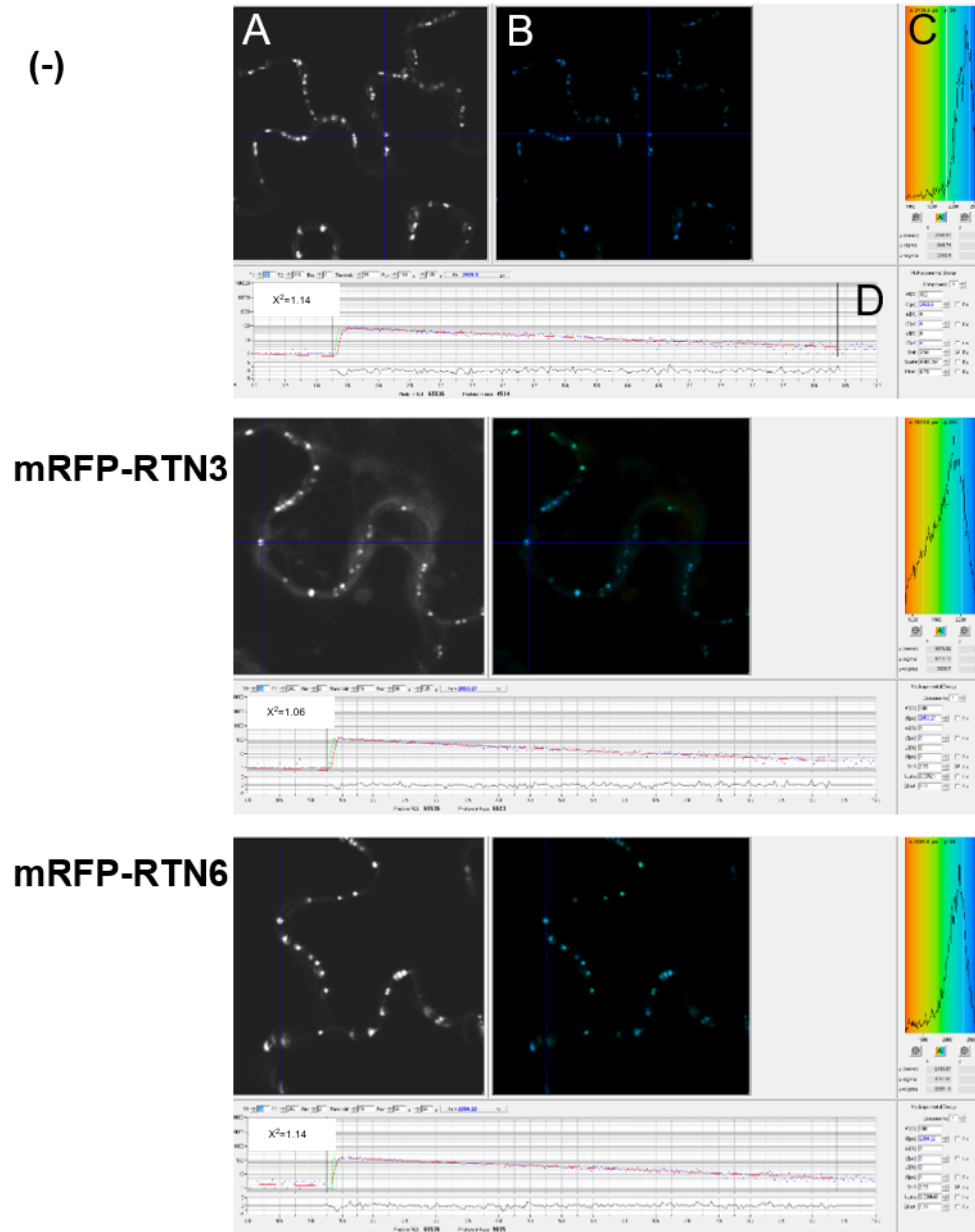


Supplementary Figure S1a

CMV-3a-GFP+



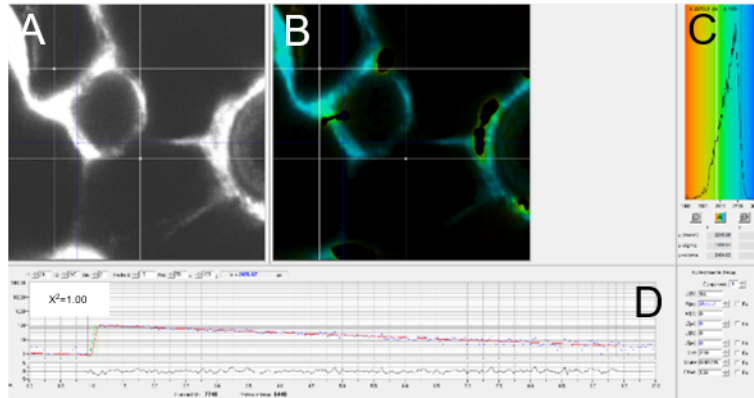
Supplementary Figure S1: FRET-FLIM data for interactions.

vMPs CMV-3a, PVX-TGB2, PMTV-TGB2, TMV-30k, respectively, were expressed in tobacco leaf cells as a donor. FRET-FLIM interactions without an acceptor (-) as a negative control, and with mRFP-RTN3 and mRFP-RTN6, respectively, are shown. (A) depicts the raw FRET-FLIM data. In (B), pseudo-coloured lifetime maps display the lifetime values for each point within the region of interest. The distribution of lifetimes across the entire image is shown in (C) with blue shades representing longer GFP fluorescence lifetimes than green ones. (D) shows representative decay curves of a single point (indicated by blue cross-hairs in A, B) with an optimal single exponential fit, where χ^2 values from 0.9 to 1.2 are considered an excellent fit to the data points.

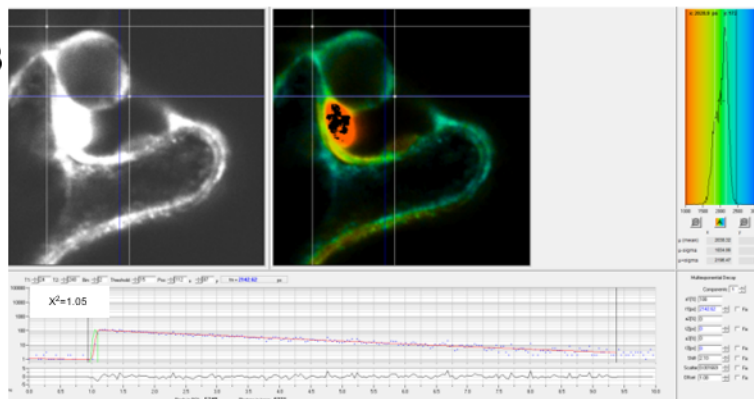
Supplementary Figure S1b

GFP-PVX-TGB2+

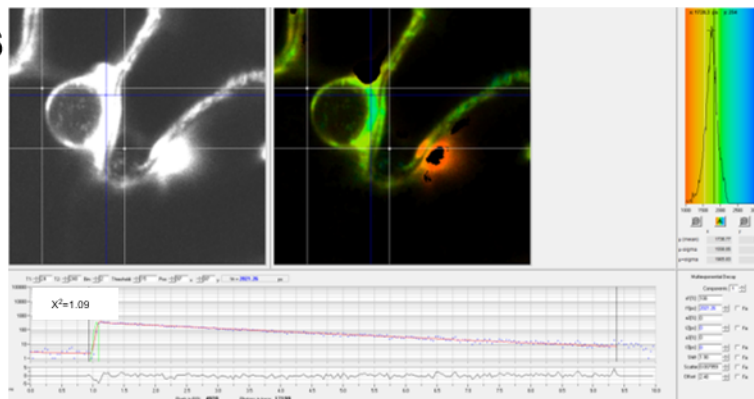
(-)



mRFP-RTN3



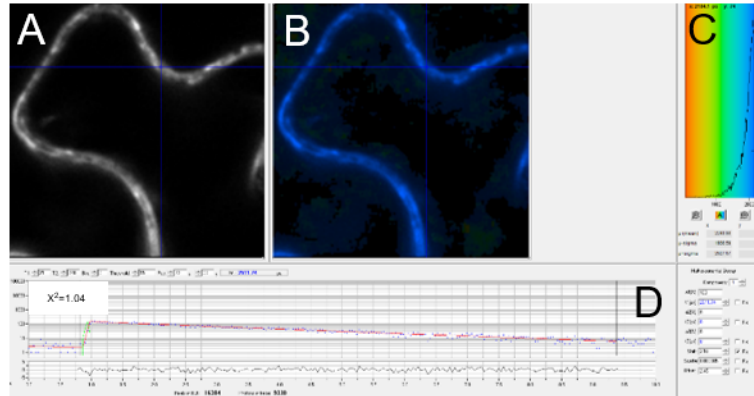
mRFP-RTN6



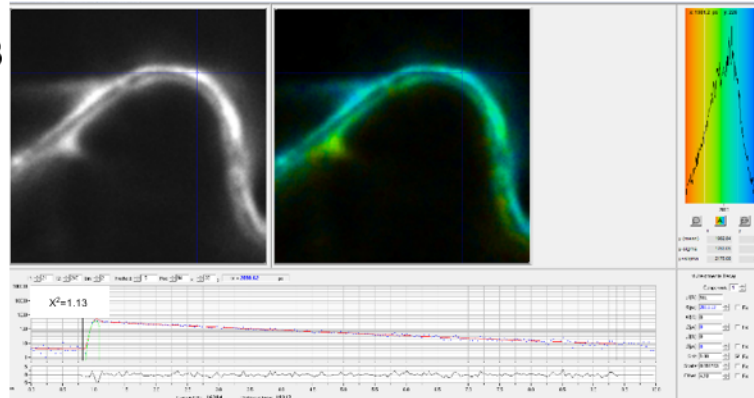
Supplementary Figure S1c

GFP-PMTV-TGB2+

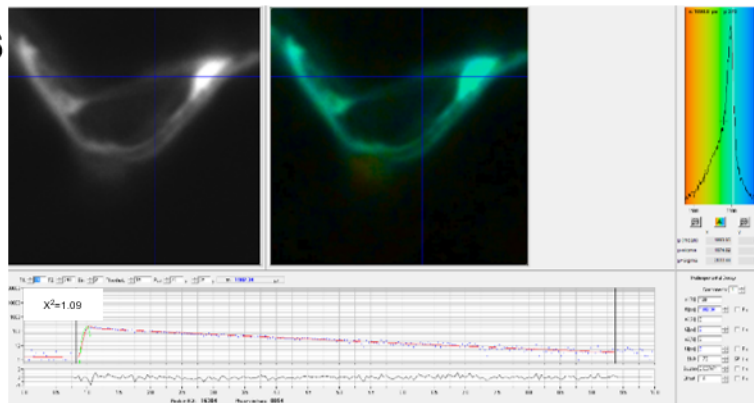
(-)



mRFP-RTN3



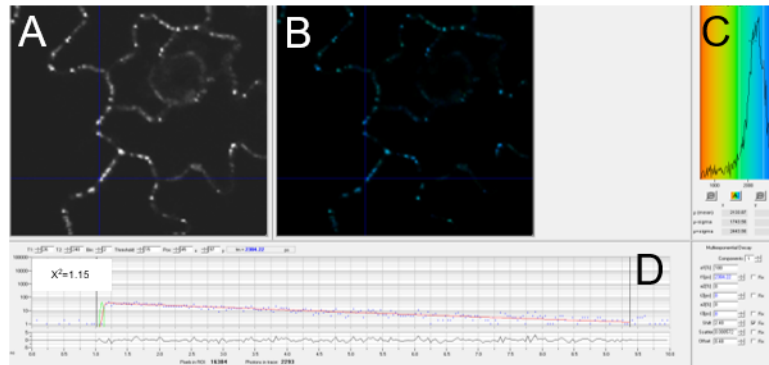
mRFP-RTN6



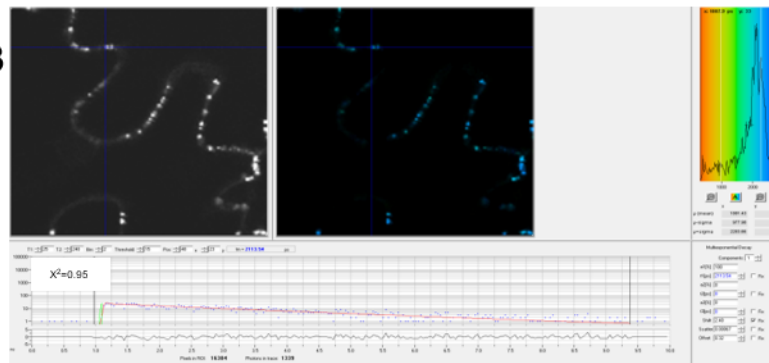
Supplementary Figure S1d

TMV-30k-GFP+

(-)



mRFP-RTN3



mRFP-RTN6

