

Supplementary Online Content

Zheng Y, Dong X, Li J, et al. Use of breast cancer risk factors to identify risk-adapted starting age of screening in China. *JAMA Netw Open*. 2022;5(11):e2241441. doi:10.1001/jamanetworkopen.2022.41441

eFigure 1. Age-Specific 10-Year Cumulative Breast Cancer Risk for Women With 5 Risk Score Levels, Using Age 50 Years for Women in the General Population as a Benchmark

eFigure 2. Age-Specific 10-Year Cumulative Breast Cancer Risk for Women With 3 Risk Score Levels in the Development and Validation Data Sets

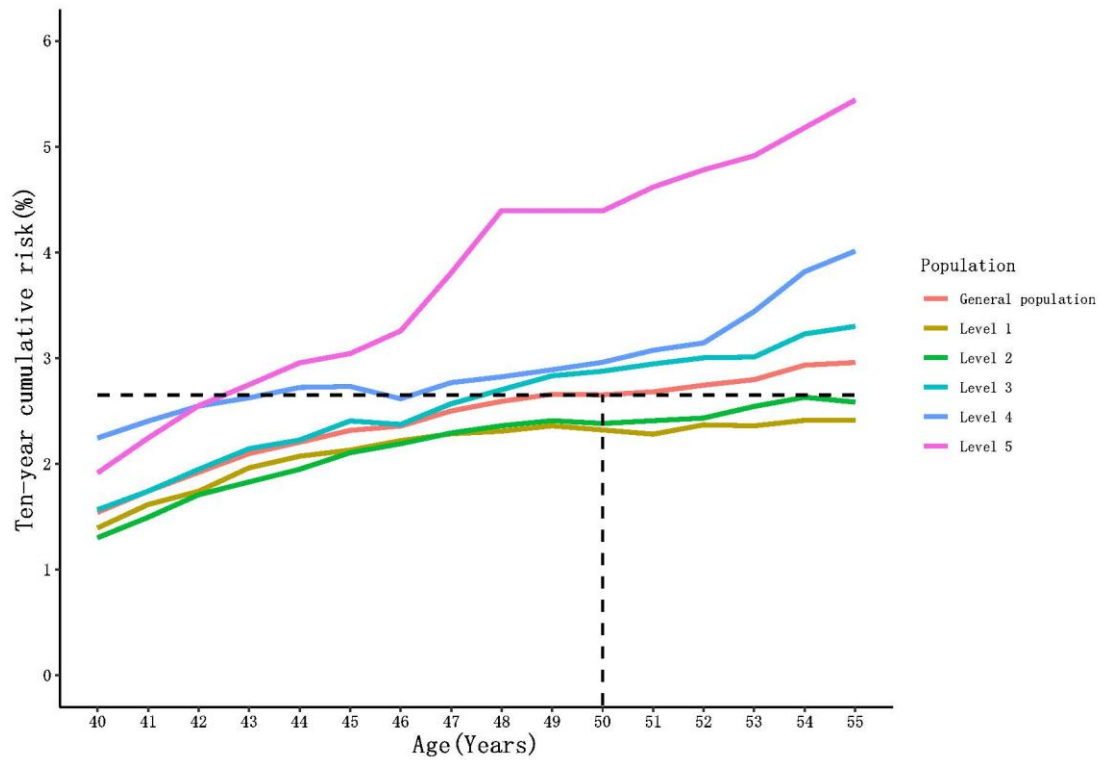
eFigure 3. Age-Specific 10-Year Cumulative Breast Cancer Risk for Women With 3 Risk Score Levels, Using Age 45 Years for Women in the General Population as a Benchmark

eTable 1. Association of Risk Factors and Breast Cancer Incidence

eTable 2. Incident Age of Breast Cancer in Women With Different Risk Levels

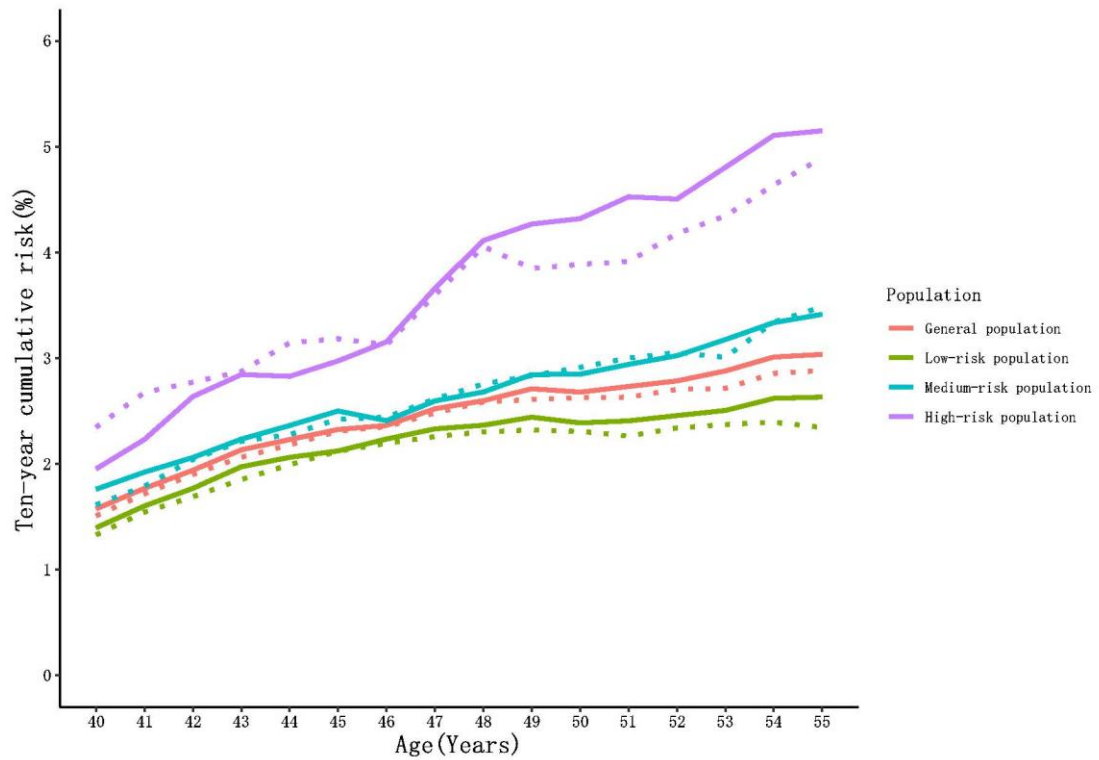
This supplementary material has been provided by the authors to give readers additional information about their work.

eFigure 1. Age-Specific 10-Year Cumulative Breast Cancer Risk for Women With 5 Risk Score Levels, Using Age 50 Years for Women in the General Population as a Benchmark

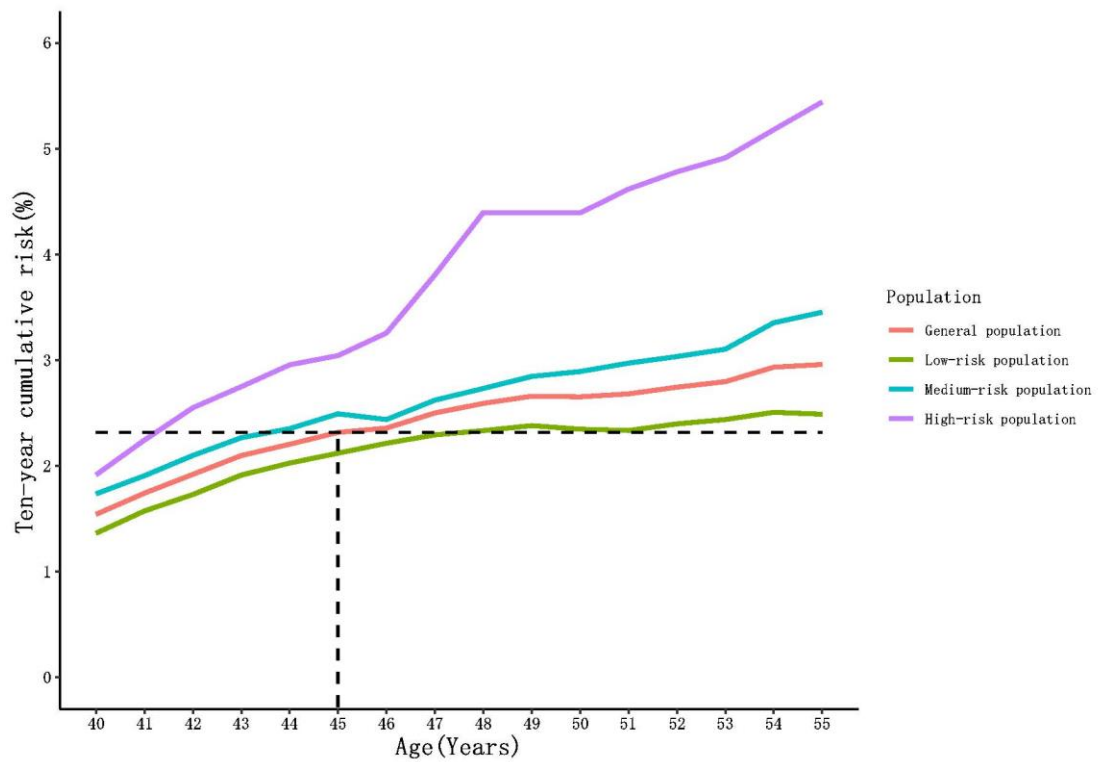


eFigure 2. Age-Specific 10-Year Cumulative Breast Cancer Risk for Women With 3 Risk Score Levels in the Development and Validation Data Sets

Solid line: development set; dotted line: validation set.



eFigure 3. Age-Specific 10-Year Cumulative Breast Cancer Risk for Women With 3 Risk Score Levels, Using Age 45 Years for Women in the General Population as a Benchmark



eTable 1. Association of Risk Factors and Breast Cancer Incidence

Variable	MV-adjusted HR (95% CI) ^a	P value
First-degree family history of breast cancer		
No	1.00 (reference)	
Yes	1.16 (1.03-1.31)	<.05
Benign breast disease		
No	1.00 (reference)	
Yes	1.25 (1.16-1.35)	<.001
Breastfeeding		
No	1.00 (reference)	
Yes	0.78 (0.70-0.87)	<.001
Age at menarche, years		
≥13	1.00 (reference)	
<13	1.27 (1.15-1.40)	<.001
BMI		
<18.5	0.70 (0.53-0.92)	<.05
18.5-23.9	1.00 (reference)	
24-27.9	1.11 (1.04-1.19)	<.01
≥28	1.25 (1.12-1.39)	<.001

BMI: Body mass index.

HR: Hazard ratio.

CI: Confidence interval.

^a Multivariate Cox regression model.

eTable 2. Incident Age of Breast Cancer in Women With Different Risk Levels

Population	Follow-up period (Median (IQR), y)	Incident age of breast cancer (Mean (SD), y)	P value
General	4.47 (3.16-6.35)	58 (8)	
Risk			
Low	4.59 (3.18-6.38)	59 (8)	.07
Medium	4.40 (3.14-6.29)	58 (8)	.28
High	4.38 (3.12-6.19)	57 (7)	<.001

IQR: Interquartile range.

SD: Standard deviation.