

Quantification of the time course of CYP3A inhibition, activation, and induction using a population pharmacokinetic model of microdosed midazolam continuous infusion

Yomna M Nassar* (1,2), Nicolas Hohmann* (3), Robin Michelet (1), Katharina Gottwalt (3), Andreas D Meid (3), Jürgen Burhenne (3), Wilhelm Huisinga (4), Walter E Haefeli (3), Gerd Mikus# (1,3), Charlotte Kloft# (1)

1. *Department of Clinical Pharmacy and Biochemistry, Institute of Pharmacy, Freie Universität Berlin, Germany*
2. *Graduate Research Training Program PharMetrX, Freie Universität Berlin/University of Potsdam, Germany*
3. *Department of Clinical Pharmacology and Pharmacoepidemiology, University of Heidelberg, Heidelberg, Germany*
4. *Institute of Mathematics, University of Potsdam, Potsdam, Germany*

*shared first authorship, #shared last authorship

Corresponding author

Charlotte Kloft

Department of Clinical Pharmacy and Biochemistry, Institute of Pharmacy, Freie Universität Berlin.

Kelchstr. 31, 12169 Berlin, Germany.

Telephone: +49 30 838 50676

Email: charlotte.kloft@fu-berlin.de

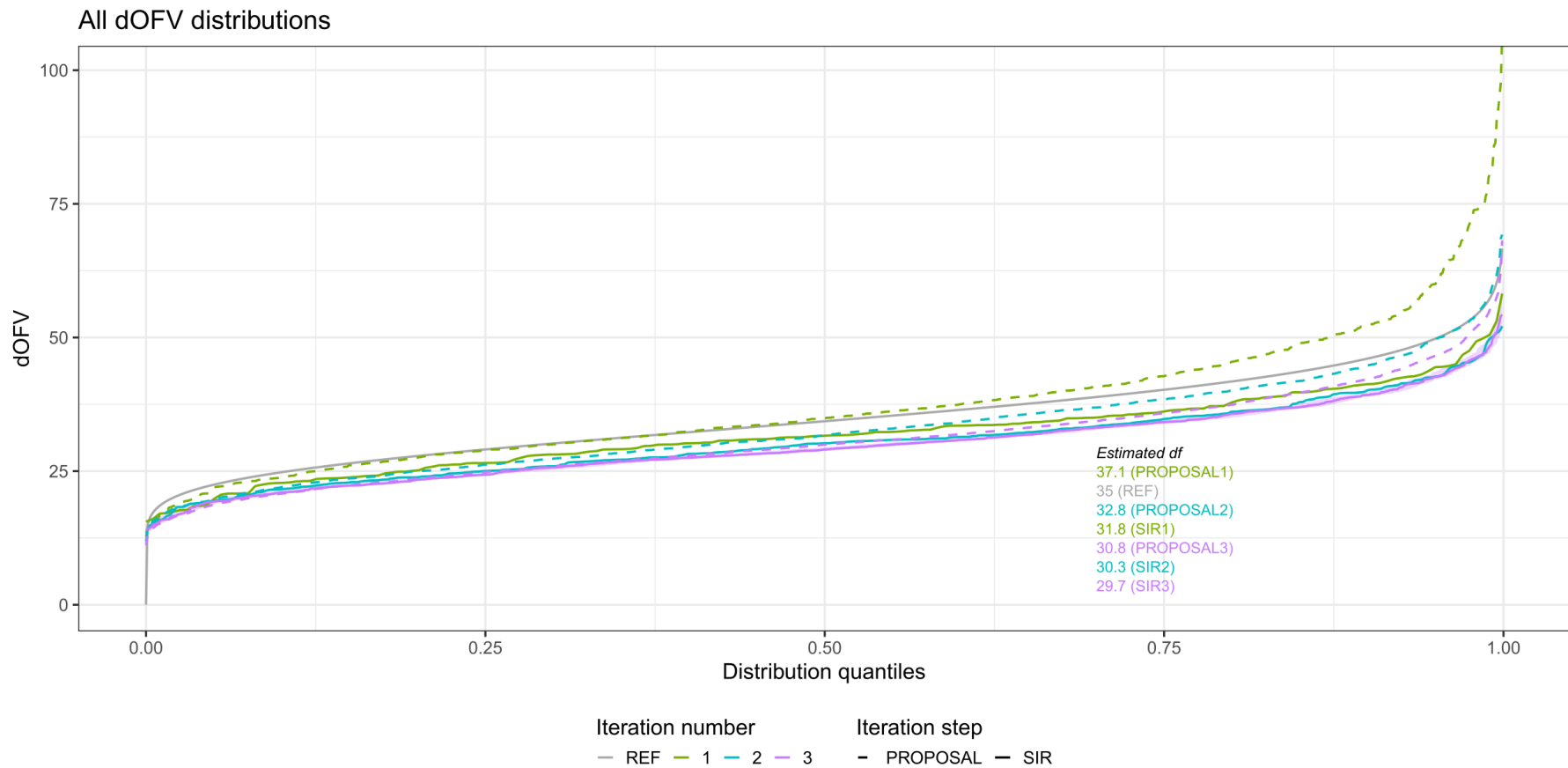


Fig S1 Diagnostic plot for the midazolam and 1'-hydroxymidazolam model showing that SIR settings were appropriate. Proposal is above the Chi square and SIR dOFV is below the Chi square distribution

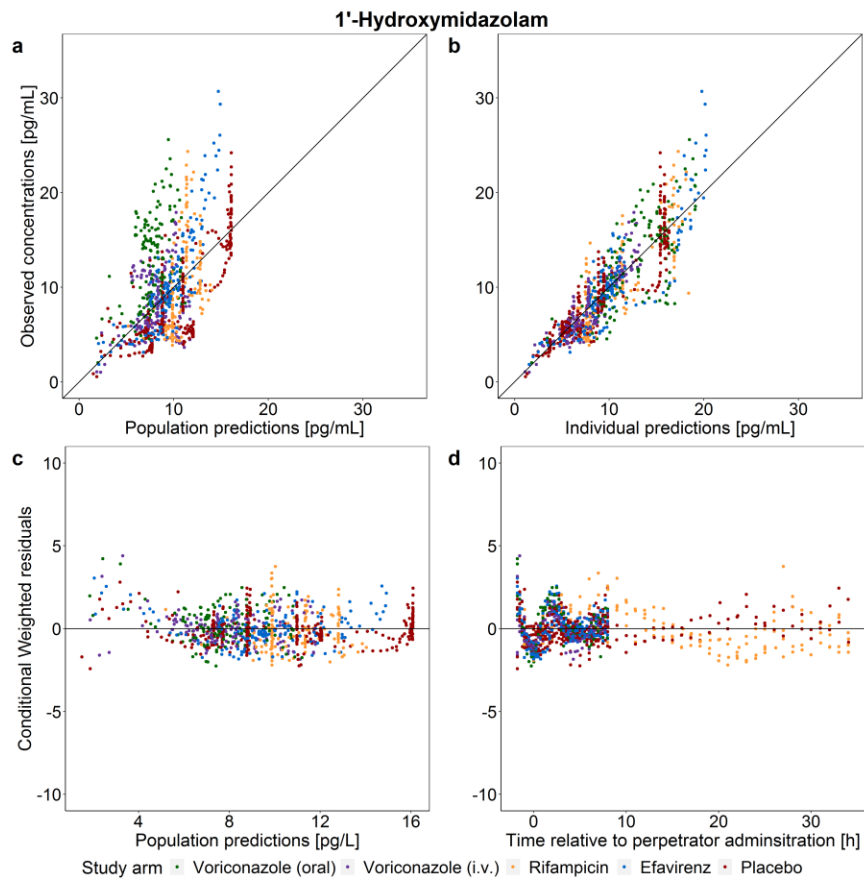
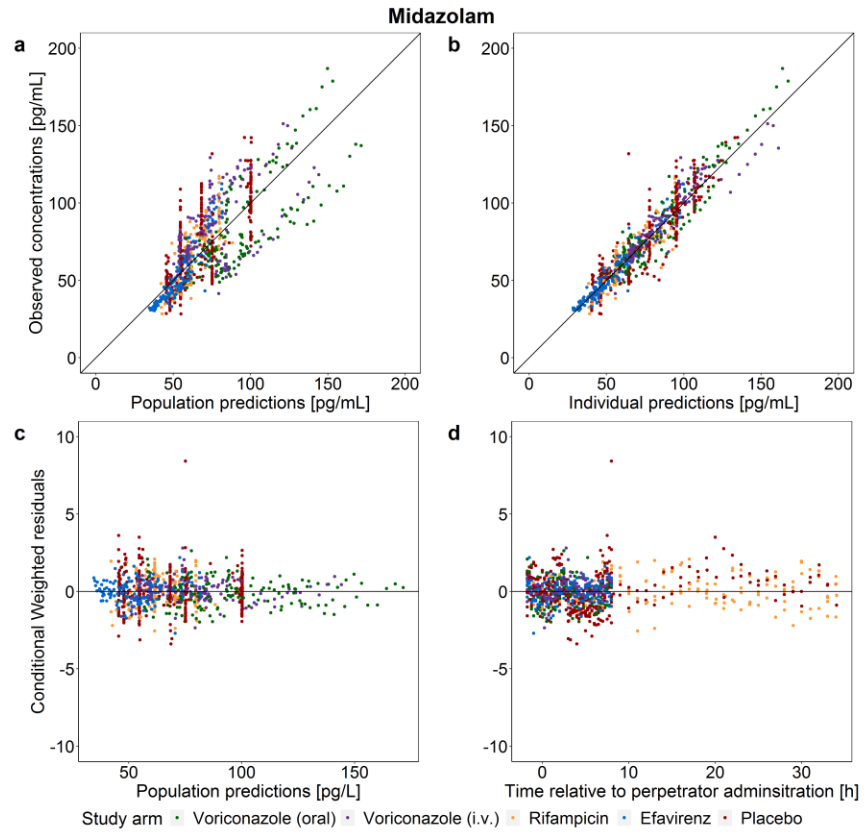


Fig S2 Basic goodness-of-fit plots (a) observations versus population predictions, b) observations versus individual predictions, c) conditional weighted residual versus population predictions, d) conditional weighted residuals versus time relative to perpetrator administration of midazolam (top) and 1'-hydroxymidazolam (bottom) model, color-coded by study arm. Dots represent the data points; the solid black line is the line of identity of slope 1 or zero. *i.v.* intravenous.

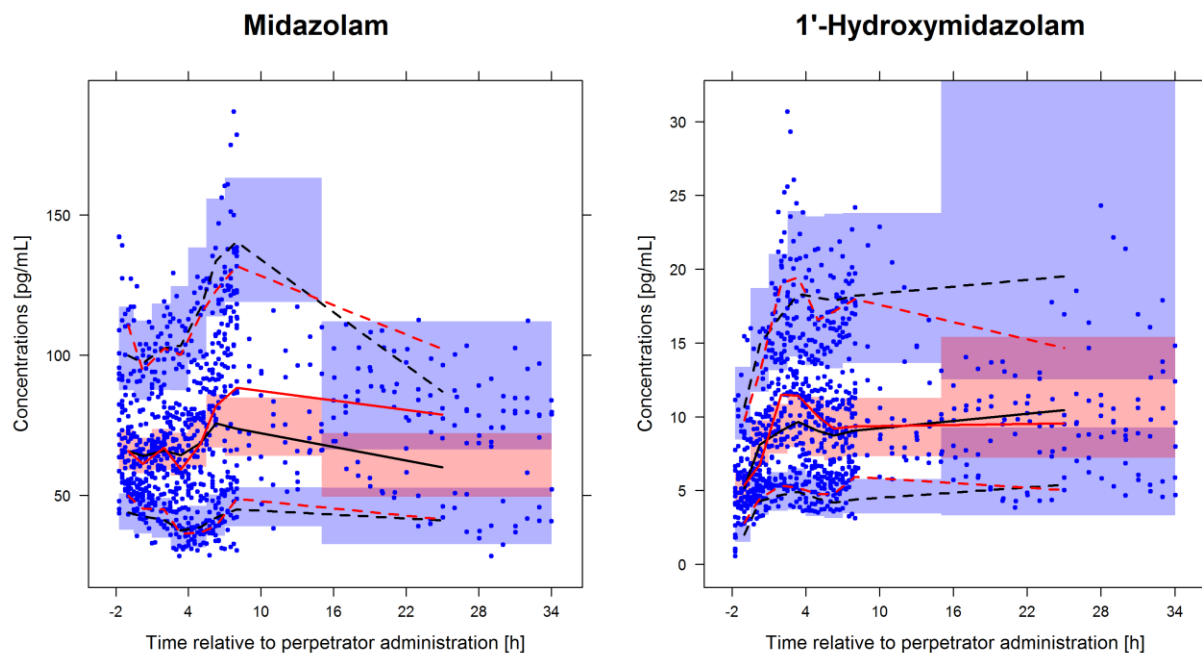


Fig S3 Visual predictive check (1000 simulations) of the midazolam and 1'-hydroxymidazolam model. Dots represent the measured concentrations, solid red and black lines represent the median of the observed and simulated concentrations, respectively. The upper and lower dotted red and black lines represent the 10th and 90th percentiles of the observed and simulated concentrations, respectively. Shaded areas represent the 95% confidence interval of the simulated percentiles. The number of bins was set to 8 with equal number of observations.

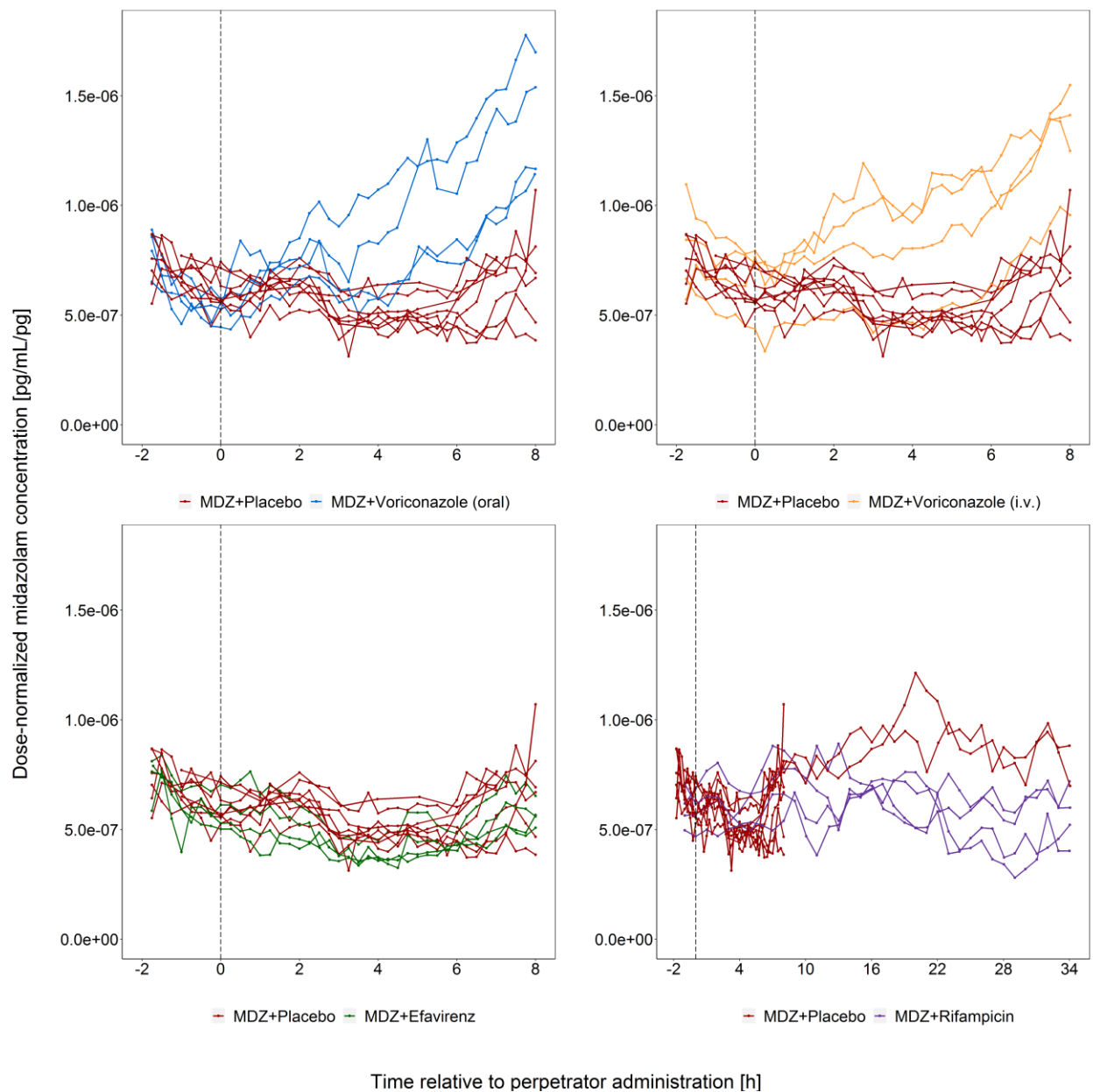


Fig S4 Dose-normalized midazolam concentration versus time relative to perpetrator administration, per study arm, color-coded by administered perpetrator or placebo. Dashed vertical line: Time of perpetrator administration. *I.v.* intravenous