

Figure 2B

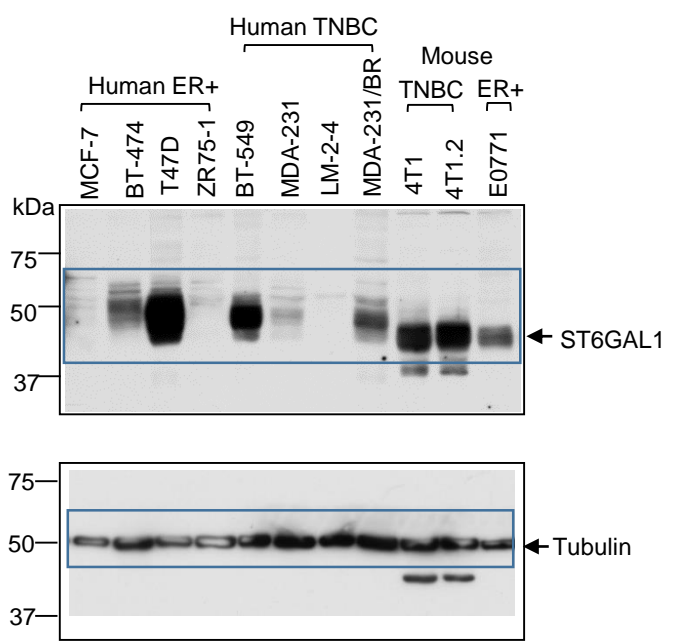


Figure 3A

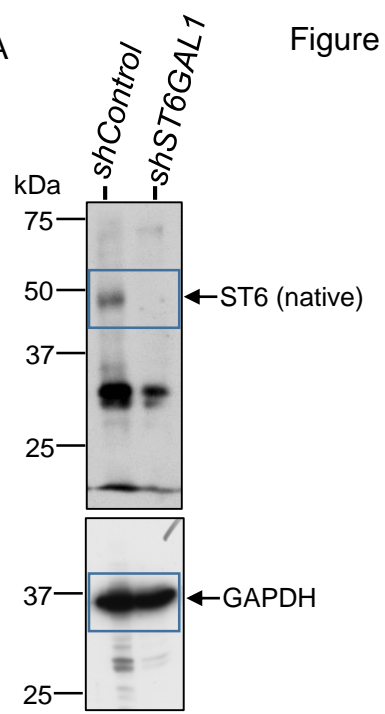


Figure 3D

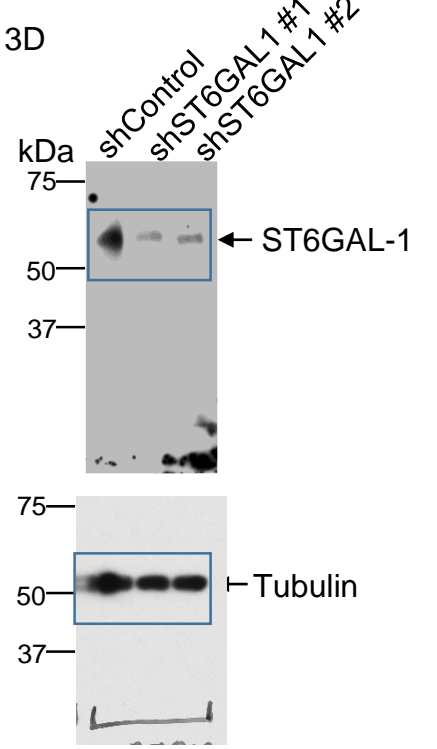


Fig 4A

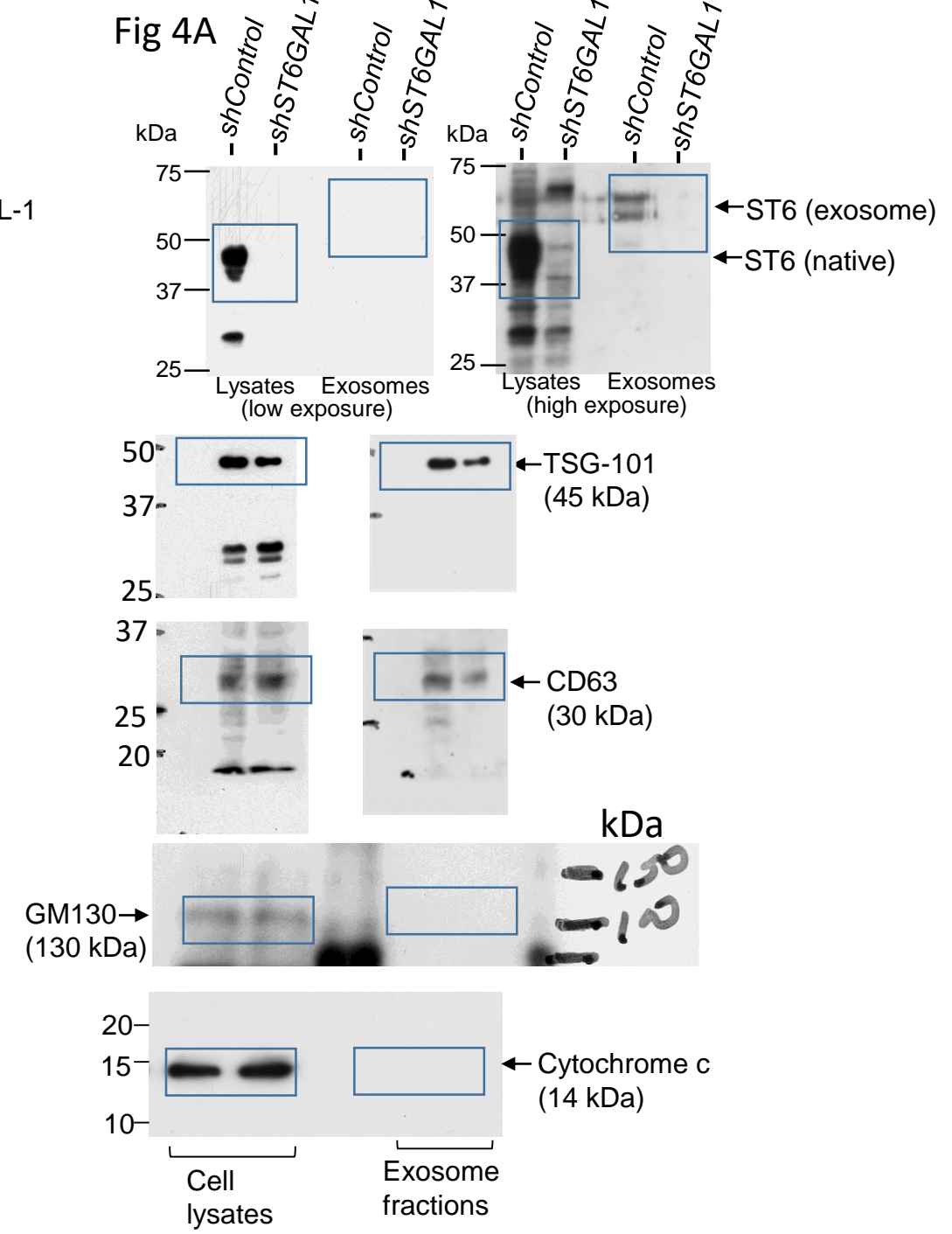


Fig. 7A

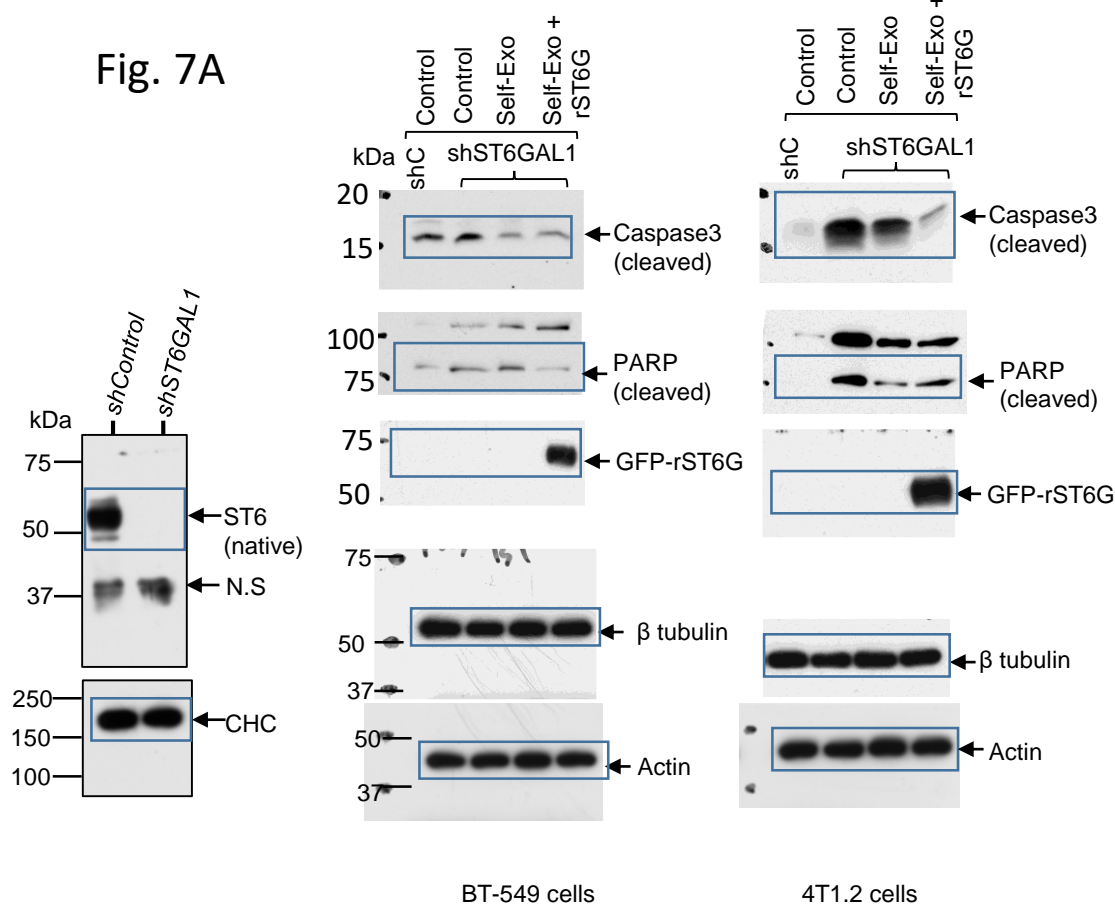


Fig. 7B

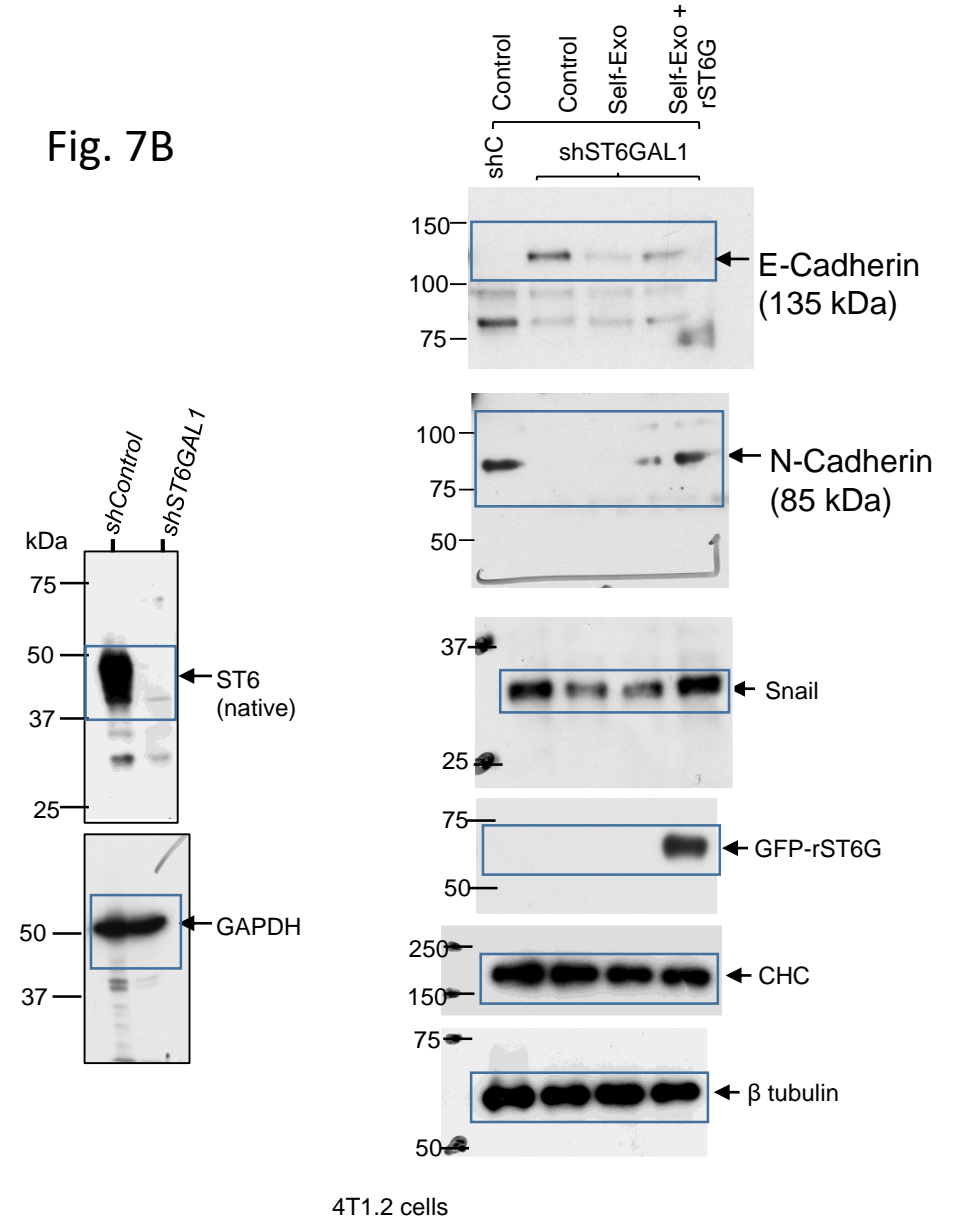
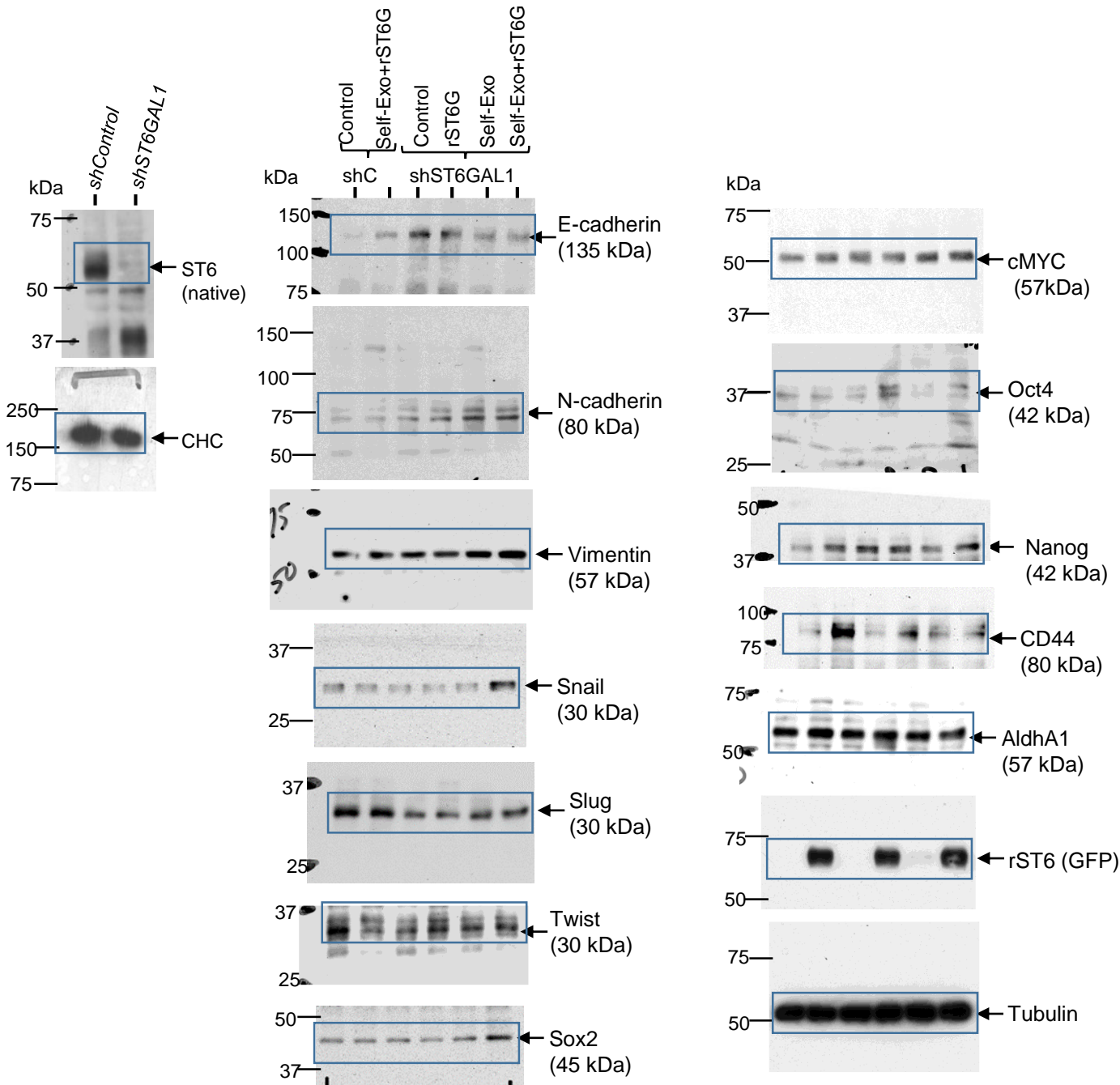


Fig. 7D



Well	Fluor	Target	Target	Sample	Cq	Cq					
Original qPCR File for Fig 2A					Ct values	Ct Values					N=3
				Samples	GAPDH	ST6GAL1	Delta Ct	2 ^{-(dCT)} x100	Ave.	S.D.	S.E.
A01	SYBR	GAPDH	ST6GAL1	MCF7	23.22	33.05	9.83	0.110	0.09	0.03	0.01
A02	SYBR	GAPDH	ST6GAL1	MCF7	23.32	33.93	10.61	0.064			
A03	SYBR	GAPDH	ST6GAL1	MCF7	23.57	33.44	9.87	0.107			
A04	SYBR	GAPDH	ST6GAL1	BT474	16.25	26.40	10.15	0.088	0.09	0.02	0.01
A05	SYBR	GAPDH	ST6GAL1	BT474	16.40	26.96	10.56	0.066			
A06	SYBR	GAPDH	ST6GAL1	BT474	16.30	26.17	9.87	0.107			
A07	SYBR	GAPDH	ST6GAL1	T47D	22.31	30.41	8.11	0.363	0.39	0.04	0.02
A08	SYBR	GAPDH	ST6GAL1	T47D	22.22	30.07	7.85	0.432			
A09	SYBR	GAPDH	ST6GAL1	T47D	22.10	30.19	8.09	0.366			
A10	SYBR	GAPDH	ST6GAL1	ZR75-1	22.10	31.39	9.29	0.160	0.17	0.01	0.01
A11	SYBR	GAPDH	ST6GAL1	ZR75-1	22.10	31.25	9.15	0.176			
A12	SYBR	GAPDH	ST6GAL1	ZR75-1	22.10	31.23	9.14	0.178			
B01	SYBR	GAPDH	ST6GAL1	BT549	21.54	30.09	8.55	0.266	0.31	0.07	0.04
B02	SYBR	GAPDH	ST6GAL1	BT549	21.54	30.02	8.48	0.280			
B03	SYBR	GAPDH	ST6GAL1	BT549	21.54	29.55	8.01	0.388			
B04	SYBR	GAPDH	ST6GAL1	MDA231	17.58	26.29	8.71	0.239	0.21	0.04	0.02
B05	SYBR	GAPDH	ST6GAL1	MDA231	17.58	26.82	9.24	0.165			
B06	SYBR	GAPDH	ST6GAL1	MDA231	17.58	26.28	8.70	0.240			
B07	SYBR	GAPDH	ST6GAL1	LM-2-4	19.44	29.01	9.57	0.132	0.12	0.01	0.01
B08	SYBR	GAPDH	ST6GAL1	LM-2-4	19.28	29.00	9.73	0.118			
B09	SYBR	GAPDH	ST6GAL1	LM-2-4	19.36	29.14	9.77	0.114			
B10	SYBR	GAPDH	ST6GAL1	231BR	18.18	27.13	8.95	0.202	0.27	0.07	0.04
B11	SYBR	GAPDH	ST6GAL1	231BR	18.85	27.03	8.18	0.345			
B12	SYBR	GAPDH	ST6GAL1	231BR	18.05	26.68	8.63	0.253			
C01	SYBR	GAPDH	ST6GAL1	4T1.	27.28	26.20	-1.08	210.865	238.09	48.65	28.09
C02	SYBR	GAPDH	ST6GAL1	4T1.	27.88	26.82	-1.06	209.140			
C03	SYBR	GAPDH	ST6GAL1	4T1.	27.64	26.09	-1.56	294.256			
C04	SYBR	GAPDH	ST6GAL1	4T1.2	28.44	29.47	1.03	48.846	40.97	7.40	4.27
C05	SYBR	GAPDH	ST6GAL1	4T1.2	27.75	29.30	1.55	34.159			
C06	SYBR	GAPDH	ST6GAL1	4T1.2	28.00	29.33	1.33	39.909			
C07	SYBR	GAPDH	ST6GAL1	E0771	26.49	31.05	4.55	4.260	3.76	0.66	0.38
C08	SYBR	GAPDH	ST6GAL1	E0771	26.80	31.44	4.64	4.003			
C09	SYBR	GAPDH	ST6GAL1	E0771	26.79	31.84	5.05	3.011			

Well	Fluor	Target	Target	Sample	Cq	Cq							Ave
Original qPCR File for Fig 3A					Ct values	Ct Values						N=3	dCt
				Samples	GAPDH	ST6GAL1	dCT	ddCT	2 ^{-(ddCT)}	Ave.	S.D.		
A01	SYBR	GAPDH	ST6GAL1	4T1.2 sh Cont	22.43	19.67	2.76	0.16	0.89	1.00	0.09		2.60
A02	SYBR	GAPDH	ST6GAL1	4T1.2 sh Cont	22.32	19.79	2.52	-0.08	1.05				
A03	SYBR	GAPDH	ST6GAL1	4T1.2 sh Cont	22.36	19.84	2.52	-0.08	1.05				
A04	SYBR	GAPDH	ST6GAL1	4T1.2 shST6	40.00	28.85	11.15	8.55	0.00	0.01	0.01		
A05	SYBR	GAPDH	ST6GAL1	4T1.2 shST6	40.00	28.69	11.31	8.71	0.00				
A06	SYBR	GAPDH	ST6GAL1	4T1.2 shST6	38.00	29.26	8.74	6.14	0.01				

Original qPCR File for Fig 3D												N=3	Ave.
BT-549 cells	Fluor	Samples	CT (ST6GAL1)	CT (GAPDH)	dCT	ddCT	2 ^{-(ddCT)}	Ave.	S.D.	dCT			
shControl	SYBR	BT549-sh Cont	22.43	20.67	1.76	0.2	0.89	1.0011	0.0921	1.60			
	SYBR	BT549-sh Cont	22.32	20.79	1.52	-0.1	1.05						
	SYBR	BT549-sh Cont	22.36	20.84	1.52	-0.1	1.05						
shST6GAL-1 #1	SYBR	BT549-shST6-1	28.00	20.85	7.15	5.5	0.02	0.0626	0.0778				
	SYBR	BT549-shST6-1	27.00	22.69	4.31	2.7	0.15						
	SYBR	BT549-shST6-1	31.00	23.26	7.74	6.1	0.01						
shST6GAL-1 #2	SYBR	BT549-shST6-2	29.00	20.69	8.31	6.7	0.01	0.0545	0.0848				
	SYBR	BT549-shST6-2	32.00	21.26	10.74	9.1	0.00						
	SYBR	BT549-shST6-2	26.00	21.69	4.31	2.7	0.15						

Original qPCR File for Fig 7C												N=3	Delta Ct
Well	Fluor	Target	Samples	ST6GAL1	GPDH	Ct	Delta-Ct	2 ^{-(ddct)}	AVE.	S.D.	S.E.	AVE.	
A01	SYBR	ST6GAL1	T47D_1_cnt	24.64	14.69	9.95	(0.04)	1.03	1.00	0.05	0.03	9.99	
A02	SYBR	ST6GAL1	T47D_1_cnt	24.57	14.62	9.94	(0.05)	1.03					
A03	SYBR	ST6GAL1	T47D_1_cnt	24.66	14.59	10.07	0.08	0.95					
A04	SYBR	ST6GAL1	T47D_2_cnt+	24.70	14.42	10.28	0.29	0.82	0.89	0.09	0.05		
A05	SYBR	ST6GAL1	T47D_2_cnt+	24.48	14.49	9.99	0.00	1.00					
A06	SYBR	ST6GAL1	T47D_2_cnt+	24.55	14.33	10.21	0.22	0.86					
A07	SYBR	ST6GAL1	T47D_3_Sh#1	26.25	14.45	11.80	1.81	0.29	0.24	0.10	0.06		
A08	SYBR	ST6GAL1	T47D_3_Sh#1	26.25	14.59	11.65	1.66	0.32					
A09	SYBR	ST6GAL1	T47D_3_Sh#1	26.11	13.16	12.95	2.96	0.13					
A10	SYBR	ST6GAL1	T47D_4+ rST6	26.13	14.30	11.83	1.84	0.28	0.27	0.02	0.01		
A11	SYBR	ST6GAL1	T47D_4+ rST6	26.17	14.34	11.83	1.84	0.28					
A12	SYBR	ST6GAL1	T47D_4+ rST6	26.31	14.27	12.04	2.05	0.24					
B01	SYBR	ST6GAL1	T47D_5+EXO	26.77	15.17	11.61	1.62	0.33	0.32	0.00	0.00		
B02	SYBR	ST6GAL1	T47D_5+EXO	26.70	15.10	11.60	1.61	0.33					
B03	SYBR	ST6GAL1	T47D_5+EXO	26.67	15.04	11.63	1.64	0.32					
B04	SYBR	ST6GAL1	T47D_6+EXO/rST6	27.16	15.69	11.48	1.49	0.36	0.31	0.04	0.02		
B05	SYBR	ST6GAL1	T47D_6+EXO/rST6	27.12	15.45	11.67	1.68	0.31					
B06	SYBR	ST6GAL1	T47D_6+EXO/rST6	27.23	15.37	11.86	1.87	0.27					

				Ct	Ct	Delta	Delta-Delta						Delta Ct
--	--	--	--	----	----	-------	-------------	--	--	--	--	--	----------

E-Cadherin gene				E-Cadherin	GPDH	Ct	Ct	2 ^{Δ(-ddct)}	AVE.	S.D.	S.E.	AVE.
A01	SYBR	E-Cadherin	T47D_1_cnt	34.75	14.69	20.06	0.12	0.92	1.02	0.25	0.14	19.939
A02	SYBR	E-Cadherin	T47D_1_cnt	34.82	14.62	20.20	0.26	0.83				
A03	SYBR	E-Cadherin	T47D_1_cnt	34.15	14.59	19.56	(0.38)	1.30				
A04	SYBR	E-Cadherin	T47D_2_cnt+	35.81	14.42	21.39	1.45	0.37	0.43	0.06	0.03	
A05	SYBR	E-Cadherin	T47D_2_cnt+	35.56	14.49	21.07	1.14	0.46				
A06	SYBR	E-Cadherin	T47D_2_cnt+	35.34	14.33	21.01	1.07	0.48				
A07	SYBR	E-Cadherin	T47D_3_Sh#1	33.01	14.45	18.56	(1.37)	2.59	2.54	0.38	0.22	
A08	SYBR	E-Cadherin	T47D_3_Sh#1	33.00	14.59	18.41	(1.53)	2.89				
A09	SYBR	E-Cadherin	T47D_3_Sh#1	32.00	13.16	18.84	(1.09)	2.14				
A10	SYBR	E-Cadherin	T47D_4+ rST6	33.98	14.30	19.67	(0.27)	1.20	1.24	0.31	0.18	
A11	SYBR	E-Cadherin	T47D_4+ rST6	33.63	14.34	19.29	(0.65)	1.57				
A12	SYBR	E-Cadherin	T47D_4+ rST6	34.26	14.27	20.00	0.06	0.96				
B01	SYBR	E-Cadherin	T47D_5+EXO	35.09	15.17	19.92	(0.02)	1.01	1.24	0.21	0.12	
B02	SYBR	E-Cadherin	T47D_5+EXO	34.54	15.10	19.44	(0.49)	1.41				
B03	SYBR	E-Cadherin	T47D_5+EXO	34.59	15.04	19.55	(0.39)	1.31				
B04	SYBR	E-Cadherin	T47D_6+EXO/rST6	35.62	15.69	19.93	(0.00)	1.00	0.91	0.09	0.05	
B05	SYBR	E-Cadherin	T47D_6+EXO/rST6	35.67	15.45	20.22	0.28	0.82				
B06	SYBR	E-Cadherin	T47D_6+EXO/rST6	35.46	15.37	20.09	0.15	0.90				

N-Cadherin gene				Ct	Ct	Delta	Delta-Delta	2 ^{Δ(-ddct)}	AVE.	S.D.	S.E.	Delta Ct
				N-Cadherin	GPDH	Ct	Ct					
E01	SYBR	N-Cadherin	T47D_1_cnt	34.07	14.69	19.37	0.065	0.956	1.059	0.45	0.26	19.31
E02	SYBR	N-Cadherin	T47D_1_cnt	34.51	14.62	19.88	0.573	0.672				
E03	SYBR	N-Cadherin	T47D_1_cnt	33.27	14.59	18.68	(0.630)	1.548				
E04	SYBR	N-Cadherin	T47D_2_cnt+	35.06	14.42	20.64	1.333	0.397	0.587	0.40	0.23	
E05	SYBR	N-Cadherin	T47D_2_cnt+	33.73	14.49	19.24	(0.066)	1.047				
E06	SYBR	N-Cadherin	T47D_2_cnt+	35.30	14.33	20.96	1.652	0.318				
E07	SYBR	N-Cadherin	T47D_3_Sh#1	34.00	14.45	19.56	0.249	0.841	0.793	0.32	0.18	
E08	SYBR	N-Cadherin	T47D_3_Sh#1	33.79	14.59	19.19	(0.116)	1.084				
E09	SYBR	N-Cadherin	T47D_3_Sh#1	33.60	13.16	20.45	1.136	0.455				
E10	SYBR	N-Cadherin	T47D_4+ rST6	30.21	14.30	15.90	(3.406)	10.598	12.932	4.49	2.59	
E11	SYBR	N-Cadherin	T47D_4+ rST6	29.47	14.34	15.13	(4.179)	18.111				
E12	SYBR	N-Cadherin	T47D_4+ rST6	30.25	14.27	15.98	(3.334)	10.086				
F01	SYBR	N-Cadherin	T47D_5+EXO	31.43	15.17	16.27	(3.042)	8.237	12.331	3.60	2.08	
F02	SYBR	N-Cadherin	T47D_5+EXO	30.62	15.10	15.52	(3.785)	13.785				
F03	SYBR	N-Cadherin	T47D_5+EXO	30.45	15.04	15.41	(3.904)	14.972				
F04	SYBR	N-Cadherin	T47D_6+EXO/rST6	30.02	15.69	14.34	(4.974)	31.439	27.267	5.82	3.36	
F05	SYBR	N-Cadherin	T47D_6+EXO/rST6	29.86	15.45	14.42	(4.894)	29.740				
F06	SYBR	N-Cadherin	T47D_6+EXO/rST6	30.32	15.37	14.94	(4.366)	20.622				

Vimentin gene				Ct	Ct	Delta	Delta-Delta	2 ^{Δ(-ddct)}	AVE.	S.D.	S.E.	Delta Ct
				Vimentin	GPDH	Ct	Ct					
E01	SYBR	Vimentin	T47D_1_cnt	14.25	14.69	(0.44)	(0.809)	1.752	1.671	0.07	0.04	(0.37)
E02	SYBR	Vimentin	T47D_1_cnt	14.27	14.62	(0.35)	(0.721)	1.648				
E03	SYBR	Vimentin	T47D_1_cnt	14.27	14.59	(0.32)	(0.690)	1.614				
E04	SYBR	Vimentin	T47D_2_cnt+	14.03	14.42	(0.40)	(0.765)	1.700	2.313	0.86	0.50	

E05	SYBR	Vimentin	T47D_2_cnt+	13.90	14.49	(0.59)	(0.955)	1.939				
E06	SYBR	Vimentin	T47D_2_cnt+	12.98	14.33	(1.35)	(1.723)	3.300				
E07	SYBR	Vimentin	T47D_3_Sh#1	14.25	14.45	(0.20)	(0.566)	1.480	1.066	0.43	0.25	
E08	SYBR	Vimentin	T47D_3_Sh#1	14.84	14.59	0.24	(0.129)	1.093				
E09	SYBR	Vimentin	T47D_3_Sh#1	14.21	13.16	1.05	0.680	0.624				
E10	SYBR	Vimentin	T47D_4+ rST6	14.27	14.30	(0.03)	(0.400)	1.319	1.166	0.14	0.08	
E11	SYBR	Vimentin	T47D_4+ rST6	14.65	14.34	0.31	(0.055)	1.039				
E12	SYBR	Vimentin	T47D_4+ rST6	14.45	14.27	0.18	(0.187)	1.139				
F01	SYBR	Vimentin	T47D_5+EXO	14.92	15.17	(0.24)	(0.612)	1.529	1.401	0.12	0.07	
F02	SYBR	Vimentin	T47D_5+EXO	15.01	15.10	(0.09)	(0.455)	1.371				
F03	SYBR	Vimentin	T47D_5+EXO	15.03	15.04	(0.01)	(0.381)	1.302				
F04	SYBR	Vimentin	T47D_6+EXO/rST6	14.58	15.69	(1.11)	(1.481)	2.791	2.929	0.27	0.16	
F05	SYBR	Vimentin	T47D_6+EXO/rST6	14.12	15.45	(1.33)	(1.696)	3.240				
F06	SYBR	Vimentin	T47D_6+EXO/rST6	14.28	15.37	(1.09)	(1.462)	2.755				

Snail gene				Ct	Ct	Delta	Delta-Delta	2 ^{-(ddct)}	AVE.	S.D.	S.E.	Delta Ct
				Snail	GPDH	Ct	Ct					AVE.
E01	SYBR	Snail	T47D_1_cnt	25.11	14.69	10.42	(0.114)	1.082	1.002	0.07	0.04	10.53
E02	SYBR	Snail	T47D_1_cnt	25.20	14.62	10.57	0.043	0.971				
E03	SYBR	Snail	T47D_1_cnt	25.19	14.59	10.60	0.069	0.953				
E04	SYBR	Snail	T47D_2_cnt+	24.97	14.42	10.55	0.025	0.983	1.065	0.13	0.07	
E05	SYBR	Snail	T47D_2_cnt+	24.74	14.49	10.26	(0.274)	1.209				
E06	SYBR	Snail	T47D_2_cnt+	24.86	14.33	10.52	(0.005)	1.004				
E07	SYBR	Snail	T47D_3_Sh#1	24.92	14.45	10.47	(0.059)	1.042	0.878	0.38	0.22	
E08	SYBR	Snail	T47D_3_Sh#1	24.92	14.59	10.33	(0.203)	1.151				
E09	SYBR	Snail	T47D_3_Sh#1	24.87	13.16	11.71	1.185	0.440				
E10	SYBR	Snail	T47D_4+ rST6	24.36	14.30	10.05	(0.476)	1.391	1.239	0.13	0.08	
E11	SYBR	Snail	T47D_4+ rST6	24.66	14.34	10.32	(0.211)	1.158				
E12	SYBR	Snail	T47D_4+ rST6	24.58	14.27	10.31	(0.223)	1.167				
F01	SYBR	Snail	T47D_5+EXO	25.38	15.17	10.21	(0.318)	1.247	1.568	0.32	0.19	
F02	SYBR	Snail	T47D_5+EXO	24.71	15.10	9.61	(0.919)	1.891				
F03	SYBR	Snail	T47D_5+EXO	24.92	15.04	9.88	(0.649)	1.568				
F04	SYBR	Snail	T47D_6+EXO/rST6	24.04	15.69	8.36	(2.174)	4.513	3.958	0.48	0.28	
F05	SYBR	Snail	T47D_6+EXO/rST6	24.09	15.45	8.64	(1.889)	3.705				
F06	SYBR	Snail	T47D_6+EXO/rST6	24.03	15.37	8.66	(1.870)	3.656				

SLUG gene				Ct	Ct	Delta	Delta-Delta	2 ^{-(ddct)}	AVE.	S.D.	S.E.	Delta Ct
				SLUG	GPDH	Ct	Ct					AVE.
A01	SYBR	SLUG	T47D_1_cnt	23.06	14.69	8.37	(0.11)	1.08	1.004	0.07	0.04	8.476
A02	SYBR	SLUG	T47D_1_cnt	23.14	14.62	8.52	0.04	0.97				
A03	SYBR	SLUG	T47D_1_cnt	23.13	14.59	8.54	0.06	0.96				
A04	SYBR	SLUG	T47D_2_cnt+	23.16	14.42	8.74	0.26	0.83	0.846	0.11	0.06	
A05	SYBR	SLUG	T47D_2_cnt+	23.03	14.49	8.54	0.06	0.96				
A06	SYBR	SLUG	T47D_2_cnt+	23.24	14.33	8.90	0.42	0.75				
A07	SYBR	SLUG	T47D_3_Sh#1	23.53	14.45	9.08	0.60	0.66	0.558	0.20	0.12	
A08	SYBR	SLUG	T47D_3_Sh#1	23.61	14.59	9.01	0.53	0.69				
A09	SYBR	SLUG	T47D_3_Sh#1	23.27	13.16	10.11	1.63	0.32				

A10	SYBR	SLUG	T47D_4+ rST6	23.38	14.30	9.08	0.60	0.66	0.688	0.08	0.04	
A11	SYBR	SLUG	T47D_4+ rST6	23.49	14.34	9.15	0.67	0.63				
A12	SYBR	SLUG	T47D_4+ rST6	23.12	14.27	8.85	0.37	0.77				
B01	SYBR	SLUG	T47D_5+EXO	23.93	15.17	8.77	0.29	0.82	0.811	0.04	0.02	
B02	SYBR	SLUG	T47D_5+EXO	23.83	15.10	8.73	0.25	0.84				
B03	SYBR	SLUG	T47D_5+EXO	23.89	15.04	8.85	0.37	0.77				
B04	SYBR	SLUG	T47D_6+EXO/rST6	24.04	15.69	8.35	(0.13)	1.09	0.928	0.15	0.09	
B05	SYBR	SLUG	T47D_6+EXO/rST6	24.27	15.45	8.82	0.34	0.79				
B06	SYBR	SLUG	T47D_6+EXO/rST6	24.01	15.37	8.63	0.15	0.90				

				Ct	Ct	Delta	Delta-Delta					Delta Ct
TWIST gene				TWIST	GPDH	Ct	Ct	2 ^(-ddct)	AVE.	S.D.	S.E.	AVE.
A01	SYBR	TWIST	T47D_1_cnt	33.78	14.69	19.09	(0.41)	1.33	1.026	0.28	0.16	19.501
A02	SYBR	TWIST	T47D_1_cnt	34.51	14.62	19.89	0.39	0.77				
A03	SYBR	TWIST	T47D_1_cnt	34.11	14.59	19.52	0.02	0.98				
A04	SYBR	TWIST	T47D_2_cnt+	31.35	14.42	16.93	(2.57)	5.93	6.250	0.44	0.25	
A05	SYBR	TWIST	T47D_2_cnt+	31.39	14.49	16.90	(2.60)	6.07				
A06	SYBR	TWIST	T47D_2_cnt+	31.08	14.33	16.75	(2.76)	6.75				
A07	SYBR	TWIST	T47D_3_Sh#1	33.17	14.45	18.72	(0.78)	1.71	1.408	0.30	0.17	
A08	SYBR	TWIST	T47D_3_Sh#1	33.93	14.59	19.34	(0.16)	1.12				
A09	SYBR	TWIST	T47D_3_Sh#1	32.18	13.16	19.03	(0.47)	1.39				
A10	SYBR	TWIST	T47D_4+ rST6	30.75	14.30	16.44	(3.06)	8.33	10.433	4.36	2.52	
A11	SYBR	TWIST	T47D_4+ rST6	30.93	14.34	16.59	(2.91)	7.52				
A12	SYBR	TWIST	T47D_4+ rST6	29.82	14.27	15.55	(3.95)	15.45				
B01	SYBR	TWIST	T47D_5+EXO	29.99	15.17	14.83	(4.68)	25.56	24.243	2.92	1.68	
B02	SYBR	TWIST	T47D_5+EXO	29.89	15.10	14.79	(4.72)	26.27				
B03	SYBR	TWIST	T47D_5+EXO	30.16	15.04	15.12	(4.39)	20.90				
B04	SYBR	TWIST	T47D_6+EXO/rST6	29.59	15.69	13.90	(5.60)	48.58	43.659	4.30	2.48	
B05	SYBR	TWIST	T47D_6+EXO/rST6	29.56	15.45	14.12	(5.39)	41.81				
B06	SYBR	TWIST	T47D_6+EXO/rST6	29.53	15.37	14.16	(5.34)	40.59				

				Ct	Ct	Delta	Delta-Delta					Delta Ct
SOX2 gene				SOX2	GPDH	Ct	Ct	2 ^(-ddct)	AVE.	S.D.	S.E.	AVE.
A01	SYBR	SOX2	T47D_1_cnt	31.19	14.69	16.49	0.04	0.98	1.001	0.04	0.02	16.458
A02	SYBR	SOX2	T47D_1_cnt	31.02	14.62	16.39	(0.07)	1.05				
A03	SYBR	SOX2	T47D_1_cnt	31.08	14.59	16.49	0.03	0.98				
A04	SYBR	SOX2	T47D_2_cnt+	30.41	14.42	15.99	(0.47)	1.38	1.188	0.24	0.14	
A05	SYBR	SOX2	T47D_2_cnt+	30.61	14.49	16.12	(0.34)	1.27				
A06	SYBR	SOX2	T47D_2_cnt+	30.92	14.33	16.59	0.13	0.91				
A07	SYBR	SOX2	T47D_3_Sh#1	30.99	14.45	16.54	0.09	0.94	0.837	0.45	0.26	
A08	SYBR	SOX2	T47D_3_Sh#1	30.76	14.59	16.16	(0.30)	1.23				
A09	SYBR	SOX2	T47D_3_Sh#1	31.17	13.16	18.01	1.55	0.34				
A10	SYBR	SOX2	T47D_4+ rST6	30.14	14.30	15.84	(0.62)	1.53	1.213	0.38	0.22	
A11	SYBR	SOX2	T47D_4+ rST6	30.41	14.34	16.07	(0.38)	1.30				
A12	SYBR	SOX2	T47D_4+ rST6	31.05	14.27	16.78	0.32	0.80				
B01	SYBR	SOX2	T47D_5+EXO	29.45	15.17	14.28	(2.18)	4.53	4.712	0.79	0.45	
B02	SYBR	SOX2	T47D_5+EXO	29.55	15.10	14.45	(2.01)	4.03				

B03	SYBR	SOX2	T47D_5+EXO	29.02	15.04	13.98	(2.48)	5.58				
B04	SYBR	SOX2	T47D_6+EXO/rST6	29.85	15.69	14.16	(2.30)	4.92	4.505	0.44	0.25	
B05	SYBR	SOX2	T47D_6+EXO/rST6	29.72	15.45	14.27	(2.18)	4.54				
B06	SYBR	SOX2	T47D_6+EXO/rST6	29.81	15.37	14.44	(2.02)	4.05				

				Ct	Ct	Delta	Delta-Delta					Delta Ct
MYC gene				MYC	GPDH	Ct	Ct	2 ^(-ddct)	AVE.	S.D.	S.E.	AVE.
A01	SYBR	MYC	T47D_1_cnt	20.09	14.69	5.40	0.32	0.80	1.020	0.25	0.15	5.080
A02	SYBR	MYC	T47D_1_cnt	19.76	14.62	5.14	0.06	0.96				
A03	SYBR	MYC	T47D_1_cnt	19.30	14.59	4.71	(0.37)	1.30				
A04	SYBR	MYC	T47D_2_cnt+	19.44	14.42	5.02	(0.06)	1.04	1.091	0.04	0.03	
A05	SYBR	MYC	T47D_2_cnt+	19.42	14.49	4.94	(0.14)	1.11				
A06	SYBR	MYC	T47D_2_cnt+	19.25	14.33	4.91	(0.17)	1.12				
A07	SYBR	MYC	T47D_3_Sh#1	19.54	14.45	5.09	0.01	0.99	0.885	0.36	0.21	
A08	SYBR	MYC	T47D_3_Sh#1	19.44	14.59	4.84	(0.24)	1.18				
A09	SYBR	MYC	T47D_3_Sh#1	19.28	13.16	6.12	1.04	0.49				
A10	SYBR	MYC	T47D_4+ rST6	19.56	14.30	5.25	0.17	0.89	0.796	0.08	0.05	
A11	SYBR	MYC	T47D_4+ rST6	19.78	14.34	5.44	0.36	0.78				
A12	SYBR	MYC	T47D_4+ rST6	19.82	14.27	5.55	0.47	0.72				
B01	SYBR	MYC	T47D_5+EXO	19.35	15.17	4.18	(0.90)	1.86	1.824	0.25	0.14	
B02	SYBR	MYC	T47D_5+EXO	19.14	15.10	4.04	(1.04)	2.05				
B03	SYBR	MYC	T47D_5+EXO	19.48	15.04	4.44	(0.64)	1.56				
B04	SYBR	MYC	T47D_6+EXO/rST6	19.33	15.69	3.64	(1.44)	2.71	2.386	0.28	0.16	
B05	SYBR	MYC	T47D_6+EXO/rST6	19.36	15.45	3.91	(1.17)	2.24				
B06	SYBR	MYC	T47D_6+EXO/rST6	19.31	15.37	3.94	(1.14)	2.21				
				Ct	Ct	Delta	Delta-Delta					Delta Ct
Oct4 gene				(Oct4)	GPDH	Ct	Ct	2 ^(-ddct)	AVE.	S.D.	S.E.	AVE.
A01	SYBR	OCT4	T47D_1_cnt	23.16	14.69	8.47	(0.08)	1.06	1.001	0.05	0.03	8.545
A02	SYBR	OCT4	T47D_1_cnt	23.19	14.62	8.57	0.02	0.99				
A03	SYBR	OCT4	T47D_1_cnt	23.19	14.59	8.60	0.06	0.96				
A04	SYBR	OCT4	T47D_2_cnt+	23.11	14.42	8.69	0.15	0.90	0.893	0.06	0.04	
A05	SYBR	OCT4	T47D_2_cnt+	23.11	14.49	8.62	0.08	0.95				
A06	SYBR	OCT4	T47D_2_cnt+	23.15	14.33	8.82	0.27	0.83				
A07	SYBR	OCT4	T47D_3_Sh#1	23.58	14.45	9.13	0.59	0.67	0.658	0.28	0.16	
A08	SYBR	OCT4	T47D_3_Sh#1	23.24	14.59	8.65	0.10	0.93				
A09	SYBR	OCT4	T47D_3_Sh#1	23.11	13.16	9.96	1.41	0.38				
A10	SYBR	OCT4	T47D_4+ rST6	23.11	14.30	8.80	0.26	0.84	0.853	0.07	0.04	
A11	SYBR	OCT4	T47D_4+ rST6	23.22	14.34	8.88	0.34	0.79				
A12	SYBR	OCT4	T47D_4+ rST6	22.92	14.27	8.65	0.10	0.93				
B01	SYBR	OCT4	T47D_5+EXO	23.39	15.17	8.22	(0.32)	1.25	1.066	0.17	0.10	
B02	SYBR	OCT4	T47D_5+EXO	23.59	15.10	8.49	(0.05)	1.04				
B03	SYBR	OCT4	T47D_5+EXO	23.72	15.04	8.68	0.14	0.91				
B04	SYBR	OCT4	T47D_6+EXO/rST6	23.68	15.69	7.99	(0.55)	1.47	1.238	0.20	0.11	
B05	SYBR	OCT4	T47D_6+EXO/rST6	23.83	15.45	8.38	(0.16)	1.12				
B06	SYBR	OCT4	T47D_6+EXO/rST6	23.74	15.37	8.37	(0.18)	1.13				

				Ct	Ct	Delta	Delta-Delta					Delta Ct
--	--	--	--	----	----	-------	-------------	--	--	--	--	----------

Nanog gene				Nanog	GPDH	Ct	Ct	2 ^{-Δ(-ddct)}	AVE.	S.D.	S.E.	AVE.
A01	SYBR	Nanog	T47D_1_cnt	27.39	14.69	12.70	0.21	0.86	1.005	0.12	0.07	12.484
A02	SYBR	Nanog	T47D_1_cnt	26.99	14.62	12.36	(0.12)	1.09				
A03	SYBR	Nanog	T47D_1_cnt	26.98	14.59	12.39	(0.09)	1.07				
A04	SYBR	Nanog	T47D_2_cnt+	26.25	14.42	11.83	(0.66)	1.58	1.292	0.27	0.15	
A05	SYBR	Nanog	T47D_2_cnt+	26.65	14.49	12.16	(0.32)	1.25				
A06	SYBR	Nanog	T47D_2_cnt+	26.75	14.33	12.42	(0.07)	1.05				
A07	SYBR	Nanog	T47D_3_Sh#1	28.94	14.45	14.49	2.01	0.25	0.224	0.11	0.06	
A08	SYBR	Nanog	T47D_3_Sh#1	28.73	14.59	14.13	1.65	0.32				
A09	SYBR	Nanog	T47D_3_Sh#1	28.91	13.16	15.75	3.27	0.10				
A10	SYBR	Nanog	T47D_4+ rST6	26.55	14.30	12.25	(0.24)	1.18	1.173	0.05	0.03	
A11	SYBR	Nanog	T47D_4+ rST6	26.67	14.34	12.33	(0.16)	1.11				
A12	SYBR	Nanog	T47D_4+ rST6	26.46	14.27	12.19	(0.29)	1.22				
B01	SYBR	Nanog	T47D_5+EXO	28.41	15.17	13.24	0.76	0.59	0.567	0.02	0.01	
B02	SYBR	Nanog	T47D_5+EXO	28.46	15.10	13.36	0.87	0.55				
B03	SYBR	Nanog	T47D_5+EXO	28.35	15.04	13.31	0.83	0.56				
B04	SYBR	Nanog	T47D_6+EXO/rST6	26.02	15.69	10.33	(2.15)	4.45	4.186	0.34	0.20	
B05	SYBR	Nanog	T47D_6+EXO/rST6	26.00	15.45	10.56	(1.93)	3.80				
B06	SYBR	Nanog	T47D_6+EXO/rST6	25.75	15.37	10.38	(2.11)	4.31				

CD44 gene				Ct	Ct	Delta	Delta-Delta	2 ^{-Δ(-ddct)}	AVE.	S.D.	S.E.	Delta Ct
				CD44	GPDH	Ct	Ct					
E01	SYBR	CD44	T47D_1_cnt	17.13	14.69	2.44	0.227	0.855	1.025	0.29	0.17	2.21
E02	SYBR	CD44	T47D_1_cnt	17.06	14.62	2.43	0.222	0.857				
E03	SYBR	CD44	T47D_1_cnt	16.35	14.59	1.76	(0.446)	1.362				
E04	SYBR	CD44	T47D_2_cnt+	16.92	14.42	2.50	0.285	0.821	0.848	0.15	0.09	
E05	SYBR	CD44	T47D_2_cnt+	16.68	14.49	2.19	(0.017)	1.012				
E06	SYBR	CD44	T47D_2_cnt+	17.04	14.33	2.70	0.492	0.711				
E07	SYBR	CD44	T47D_3_Sh#1	16.36	14.45	1.91	(0.298)	1.230	0.961	0.42	0.24	
E08	SYBR	CD44	T47D_3_Sh#1	16.57	14.59	1.98	(0.235)	1.177				
E09	SYBR	CD44	T47D_3_Sh#1	16.44	13.16	3.28	1.072	0.476				
E10	SYBR	CD44	T47D_4+ rST6	16.65	14.30	2.35	0.142	0.906	1.042	0.17	0.10	
E11	SYBR	CD44	T47D_4+ rST6	16.56	14.34	2.22	0.012	0.992				
E12	SYBR	CD44	T47D_4+ rST6	16.18	14.27	1.92	(0.295)	1.227				
F01	SYBR	CD44	T47D_5+EXO	16.64	15.17	1.47	(0.736)	1.665	1.414	0.28	0.16	
F02	SYBR	CD44	T47D_5+EXO	17.16	15.10	2.06	(0.155)	1.113				
F03	SYBR	CD44	T47D_5+EXO	16.70	15.04	1.66	(0.548)	1.462				
F04	SYBR	CD44	T47D_6+EXO/rST6	16.00	15.69	0.31	(1.896)	3.721	3.265	0.40	0.23	
F05	SYBR	CD44	T47D_6+EXO/rST6	16.02	15.45	0.57	(1.637)	3.109				
F06	SYBR	CD44	T47D_6+EXO/rST6	16.02	15.37	0.64	(1.568)	2.964				

AldH1 gene				Ct	Ct	Delta	Delta-Delta	2 ^{-Δ(-ddct)}	AVE.	S.D.	S.E.	Delta Ct
				AldH1	GPDH	Ct	Ct					
A01	SYBR	AldH1	T47D_1_cnt	30.48	14.69	15.79	(0.22)	1.17	1.017	0.23	0.13	16.014
A02	SYBR	AldH1	T47D_1_cnt	31.05	14.62	16.43	0.42	0.75				
A03	SYBR	AldH1	T47D_1_cnt	30.42	14.59	15.83	(0.18)	1.14				
A04	SYBR	AldH1	T47D_2_cnt+	29.99	14.42	15.57	(0.44)	1.35	1.421	0.10	0.06	

A05	SYBR	AldH1	T47D_2_cnt+	30.03	14.49	15.55	(0.46)	1.38				
A06	SYBR	AldH1	T47D_2_cnt+	29.73	14.33	15.40	(0.61)	1.53				
A07	SYBR	AldH1	T47D_3_Sh#1	31.05	14.45	16.60	0.59	0.66	0.578	0.28	0.16	
A08	SYBR	AldH1	T47D_3_Sh#1	30.93	14.59	16.33	0.32	0.80				
A09	SYBR	AldH1	T47D_3_Sh#1	31.06	13.16	17.90	1.89	0.27				
A10	SYBR	AldH1	T47D_4+ rST6	30.99	14.30	16.69	0.68	0.63	0.779	0.28	0.16	
A11	SYBR	AldH1	T47D_4+ rST6	30.21	14.34	15.87	(0.14)	1.10				
A12	SYBR	AldH1	T47D_4+ rST6	31.00	14.27	16.73	0.72	0.61				
B01	SYBR	AldH1	T47D_5+EXO	30.40	15.17	15.23	(0.78)	1.72	1.784	0.21	0.12	
B02	SYBR	AldH1	T47D_5+EXO	30.41	15.10	15.31	(0.70)	1.62				
B03	SYBR	AldH1	T47D_5+EXO	30.04	15.04	15.00	(1.01)	2.01				
B04	SYBR	AldH1	T47D_6+EXO/rST 6	30.41	15.69	14.72	(1.29)	2.45	2.268	0.22	0.13	
B05	SYBR	AldH1	T47D_6+EXO/rST 6	30.23	15.45	14.78	(1.23)	2.34				
B06	SYBR	AldH1	T47D_6+EXO/rST 6	30.37	15.37	15.00	(1.01)	2.02				