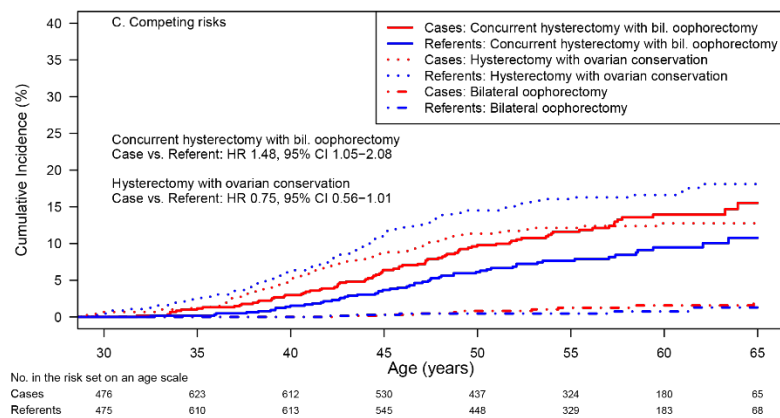
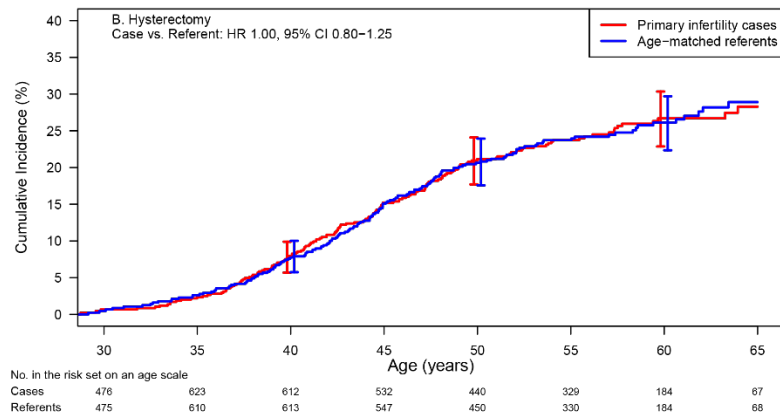
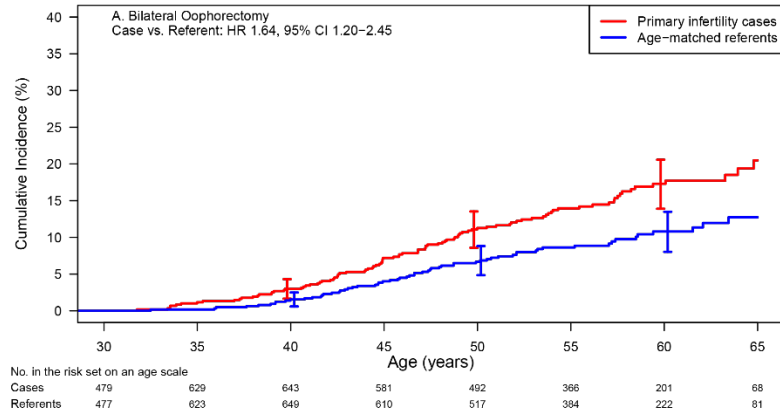


Appendix 1. Cumulative incidence of subsequent bilateral oophorectomy (A), hysterectomy (B), and the competing risks (C) of which procedure occurs first in women with primary infertility compared to age-matched referent women, using age as the time scale, and excluding women with a diagnosis of endometriosis.

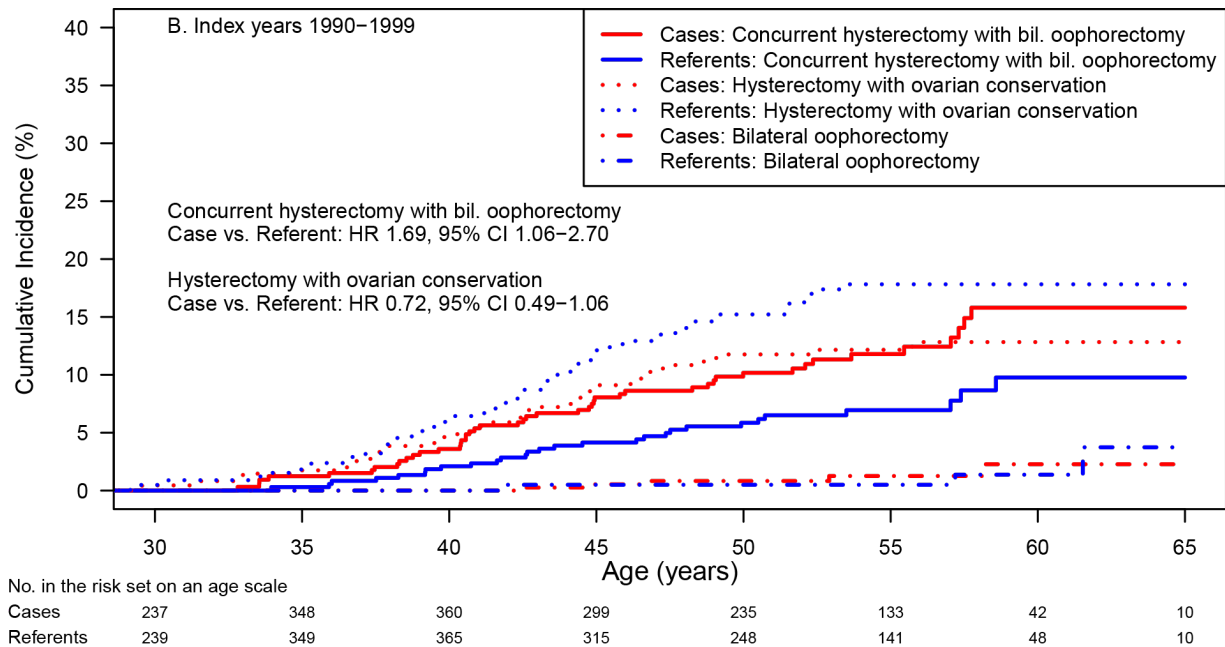
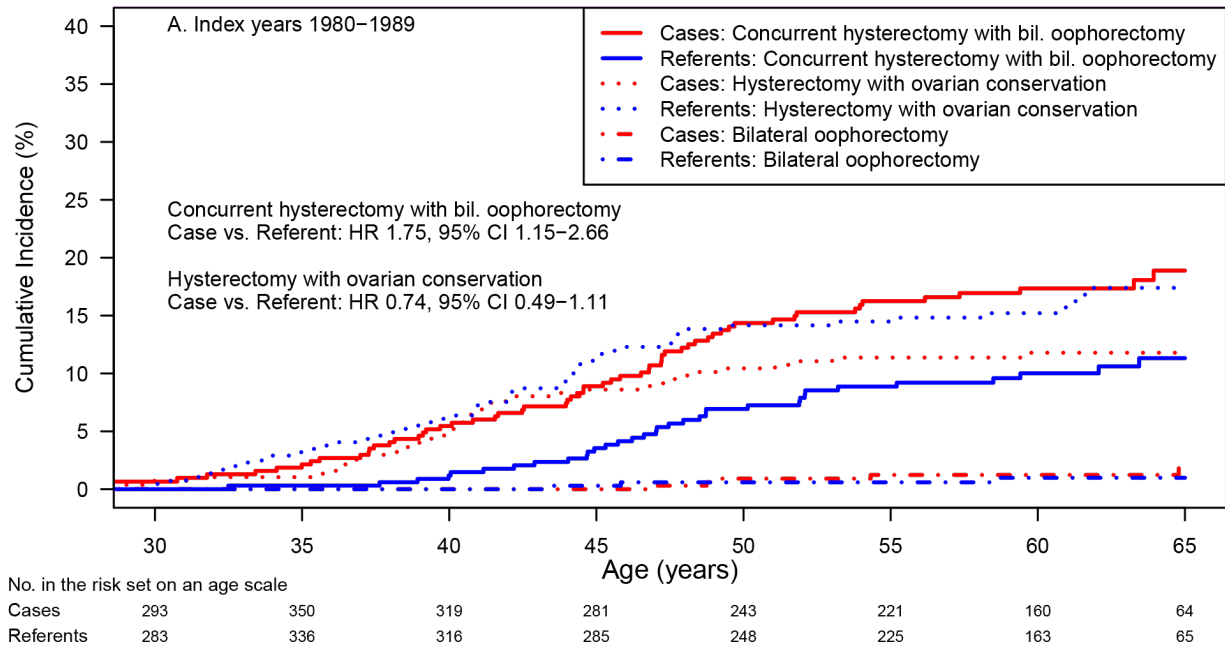


Ainsworth AA, Sadecki E, Zhao Y, Weaver AL, Stewart EA. Women with a history of primary infertility and increased rates of bilateral oophorectomy. *Obstet Gynecol* 2022;140.

The authors provided this information as a supplement to their article.

©2022 American College of Obstetricians and Gynecologists.

Appendix 2. Cumulative incidence of subsequent concurrent hysterectomy with bilateral oophorectomy, hysterectomy with ovarian conservation, or bilateral oophorectomy in index years 1980–1989 (A) and 1990–1999 (B), using age as the time scale.



Ainsworth AA, Sadecki E, Zhao Y, Weaver AL, Stewart EA. Women with a history of primary infertility and increased rates of bilateral oophorectomy. *Obstet Gynecol* 2022;140.

The authors provided this information as a supplement to their article.

©2022 American College of Obstetricians and Gynecologists.