

Figure S1. Wright-Giemsa-stained BALF smear. BALF smears from each group were stained with Wright-Giemsa. Magnification, x200; scale bar, 100  $\mu$ m. BALF, bronchoalveolar lavage fluid; DEX, dexmedetomidine; OVA, ovalbumin.

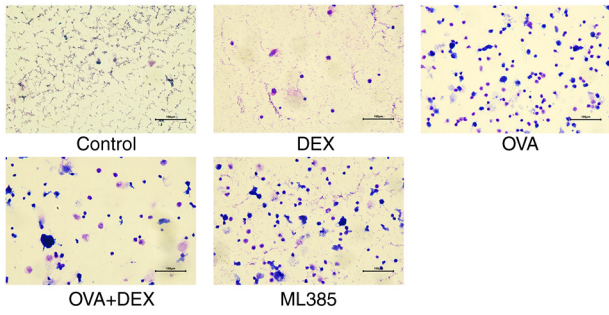


Figure S2. ML385 administration exerts no effect on airway hyperresponsiveness. Airway resistance of mice in response to different concentrations of nebulized methacholine (0, 6, 12, 24 and 48 mg/ml). The quantitative data are presented as mean  $\pm$  standard deviation (n=3). \*\*\*P<0.001; #P<0.05. DEX, dexmedetomidine; OVA, ovalbumin; Rrs, respiratory resistance.

