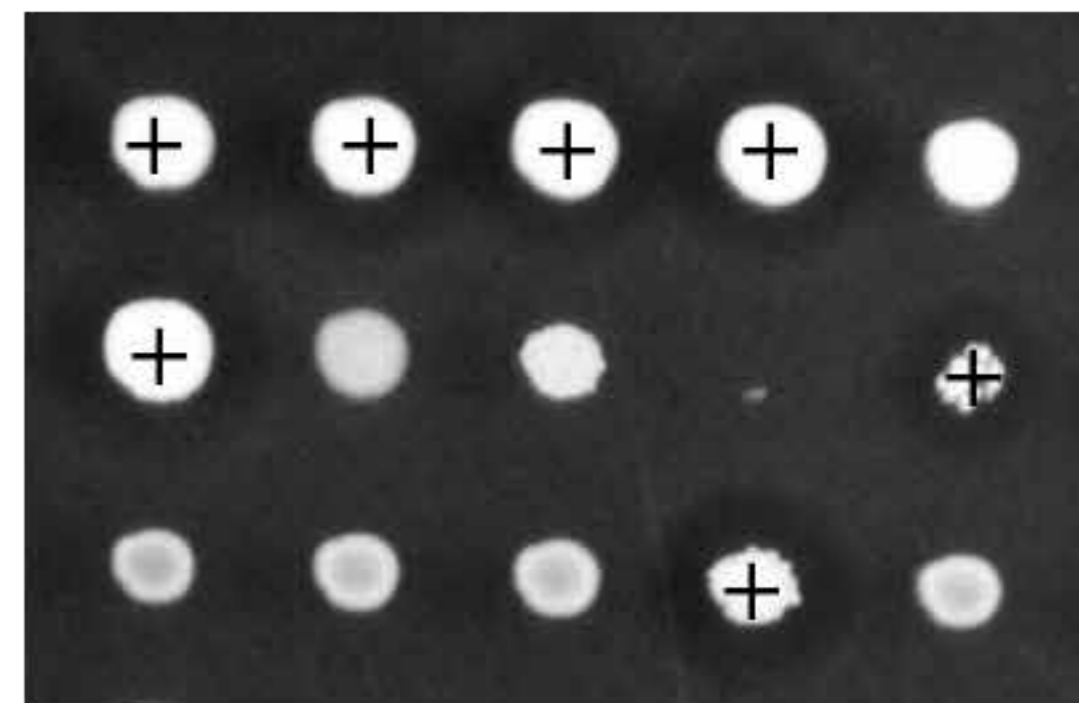


B



C



**Supplementary Figure 1.** A) Columbia agar plate containing bacterial colonies; insert showing two *Rothia* colonies selected on basis of colony morphology, B and C) Screening overlay inhibition assays on agar plates to identify colonies inhibiting growth of target bacteria in the overlay and inhibition zones ("halos") where the growth of target bacteria is inhibited by products secreted by candidate antagonist.