

Stress induced phosphoprotein 1 (STIP1)

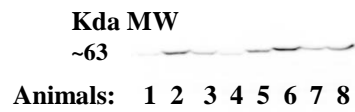
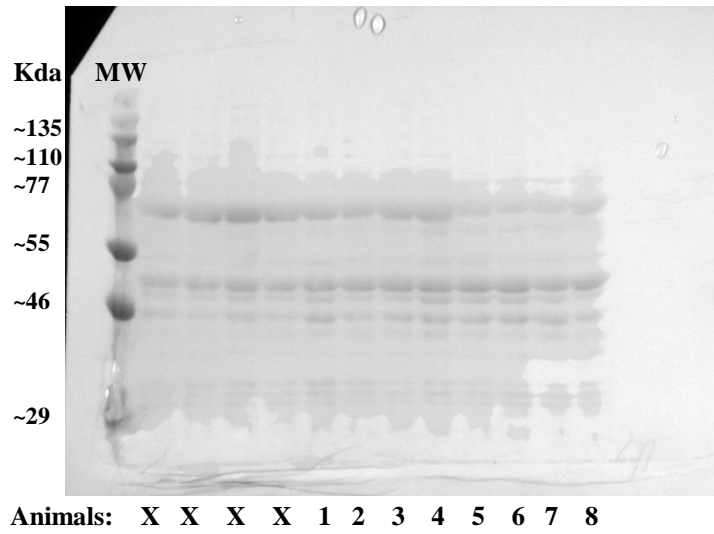
Technical replicates (A, B, C):

- X: Samples not used
- 1 to 4: non-stressed pigs
- 5 to 8: stressed pigs

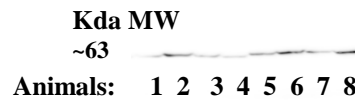
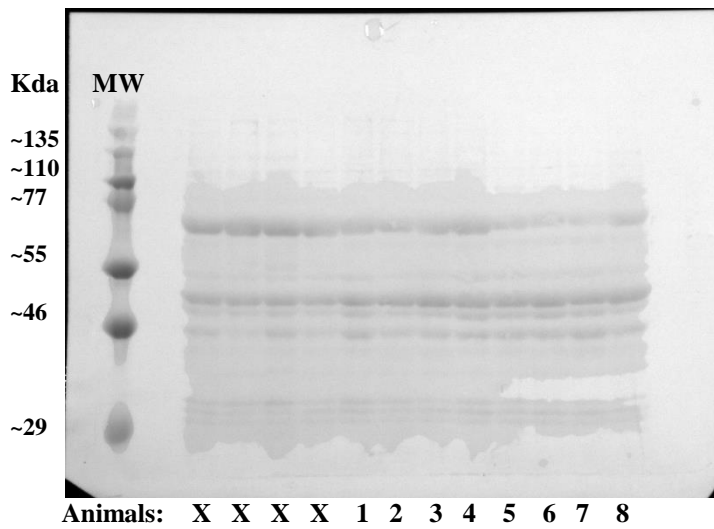
Membranes stained using the reversible stain

Western blot STIP1

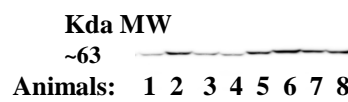
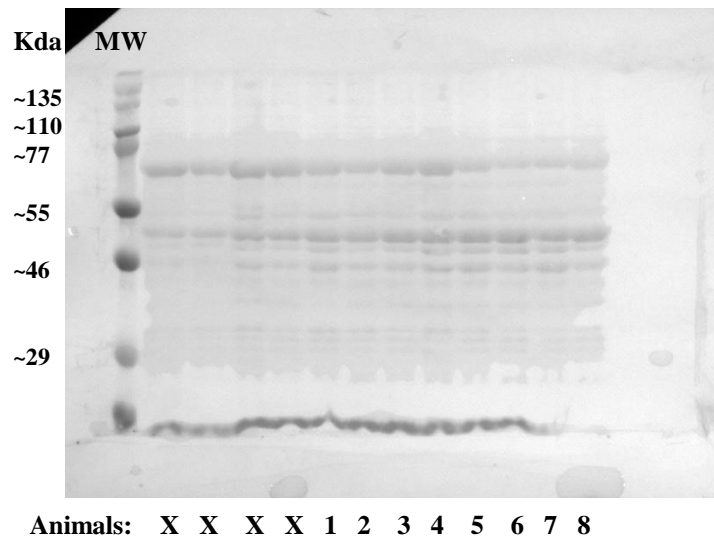
A



B



C



Catalase (CAT)

Technical replicates (A, B, C):

- X: Samples not used
- 1 to 4: non-stressed pigs
- 5 to 8: stressed pigs

Membranes stained using the reversible stain

Western blot CAT

