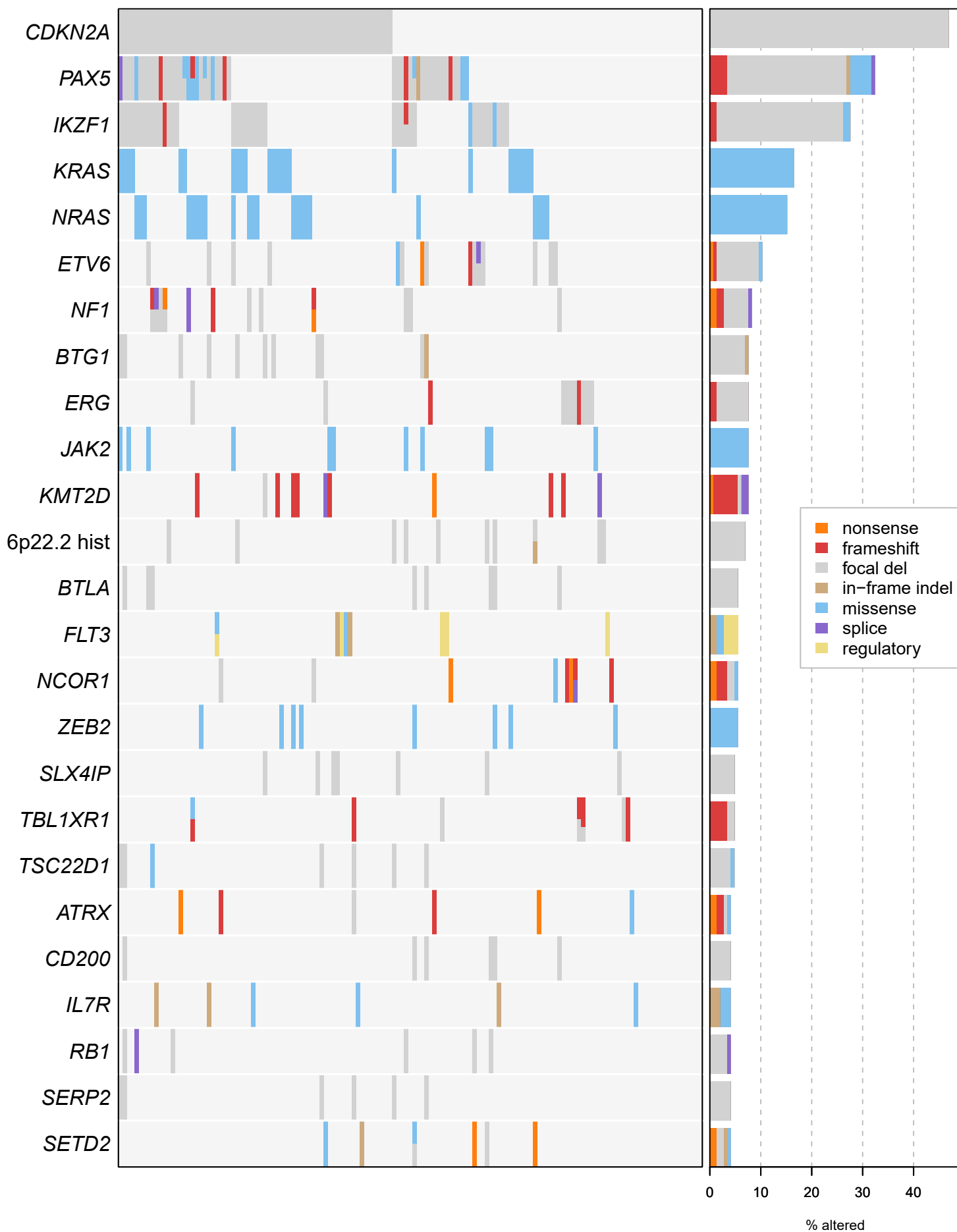


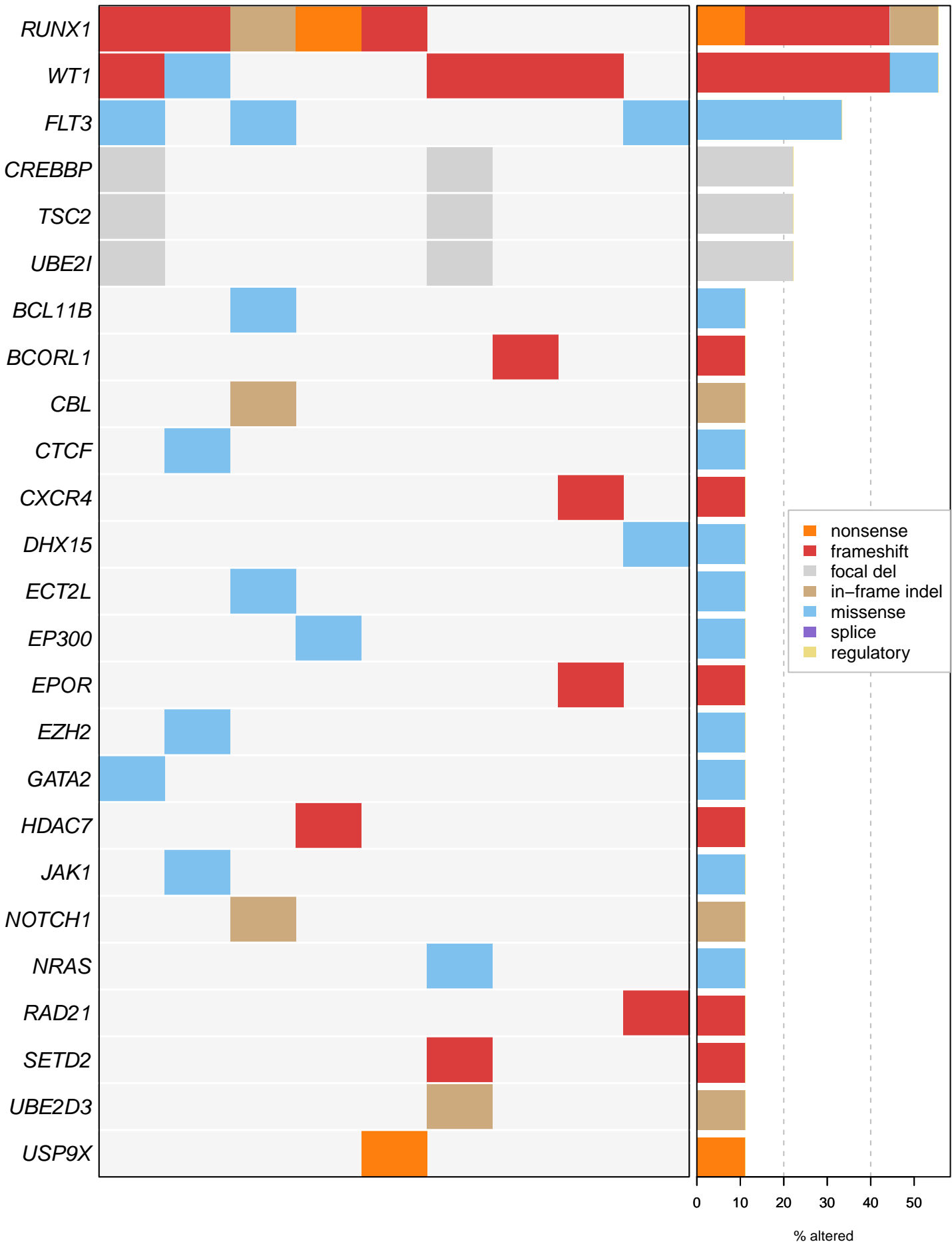
Supplementary Dataset 4

B-other (n=145) B-ALL

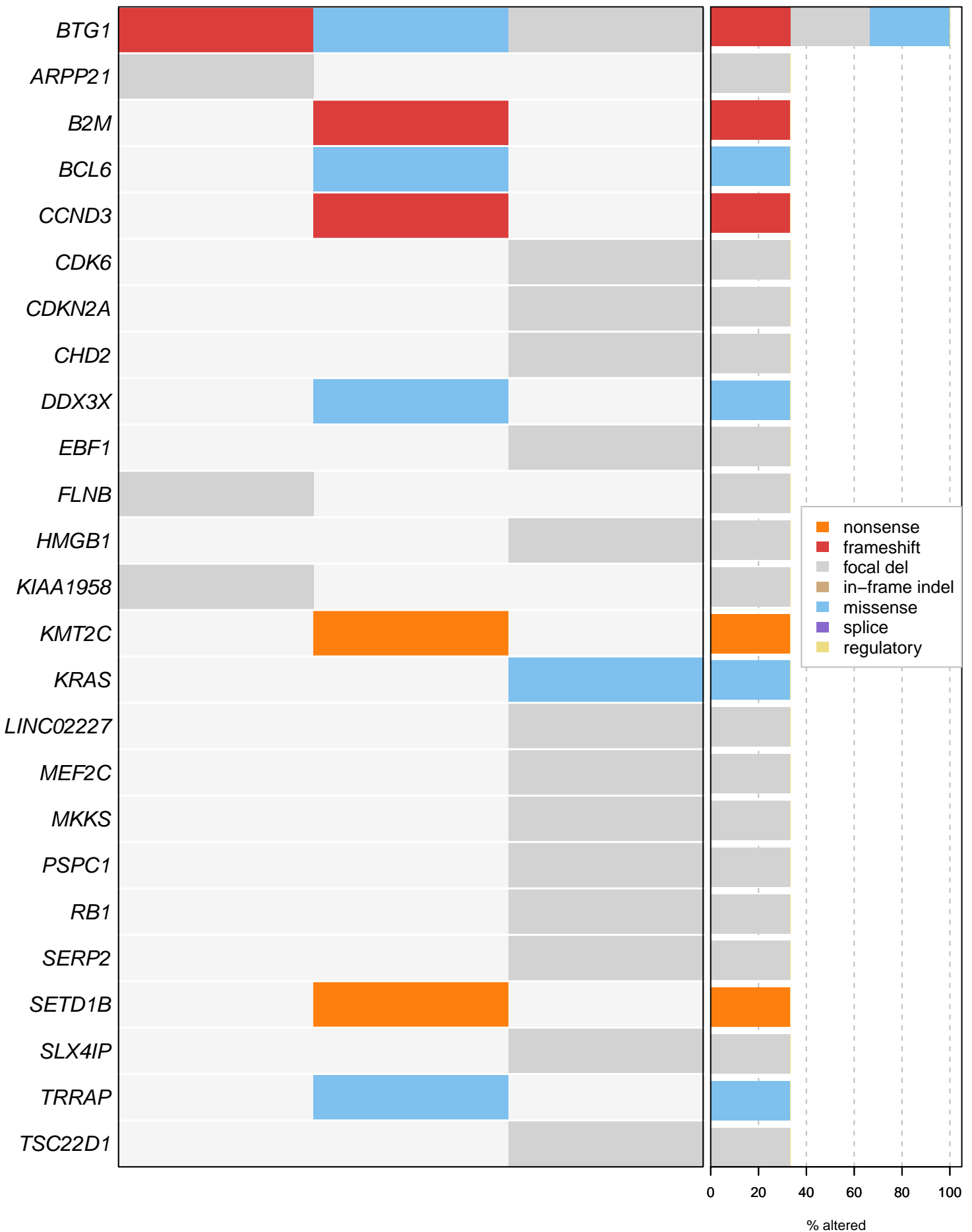
Oncoprints of each ALL subtype



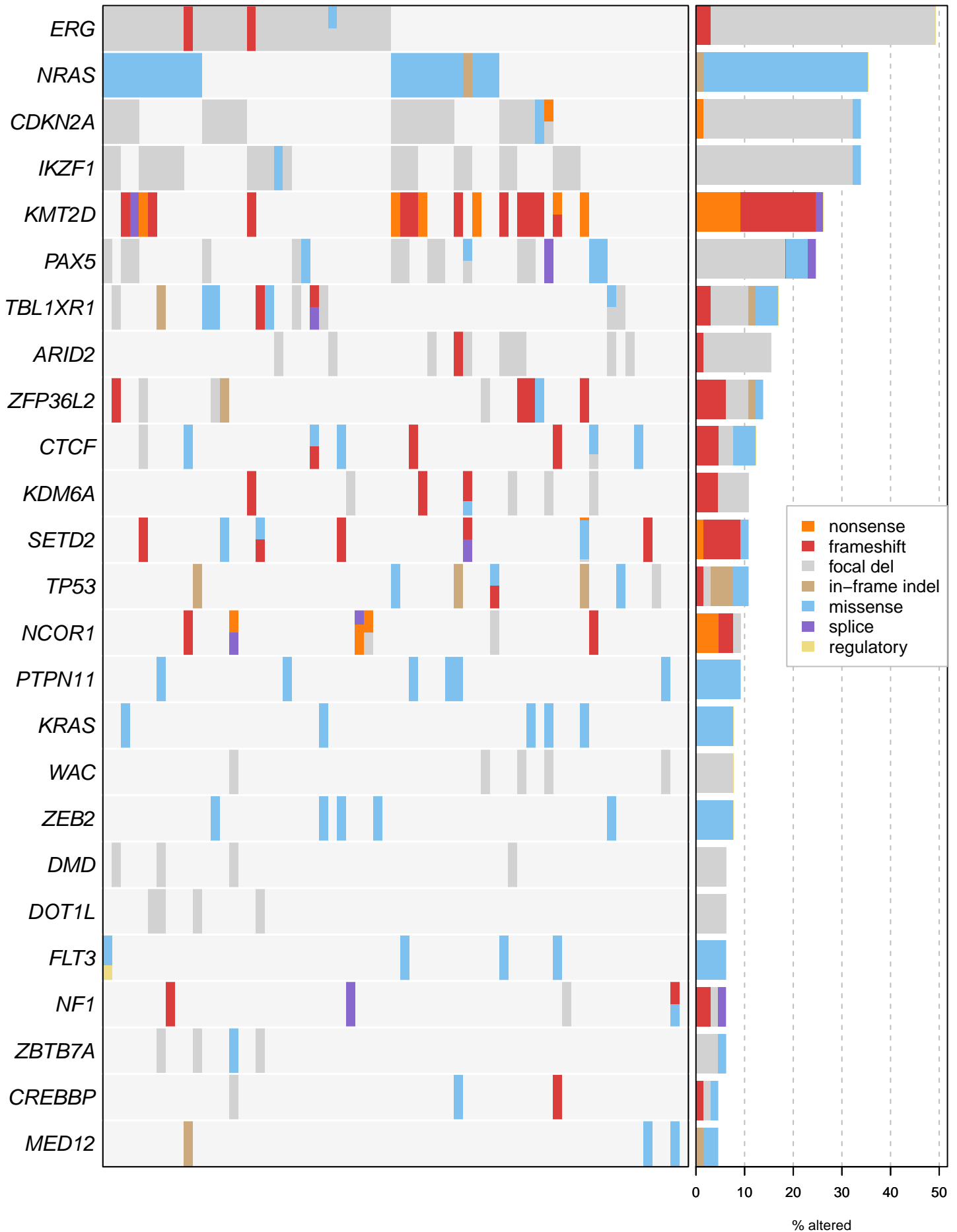
BCL11B (n=9) T-ALL



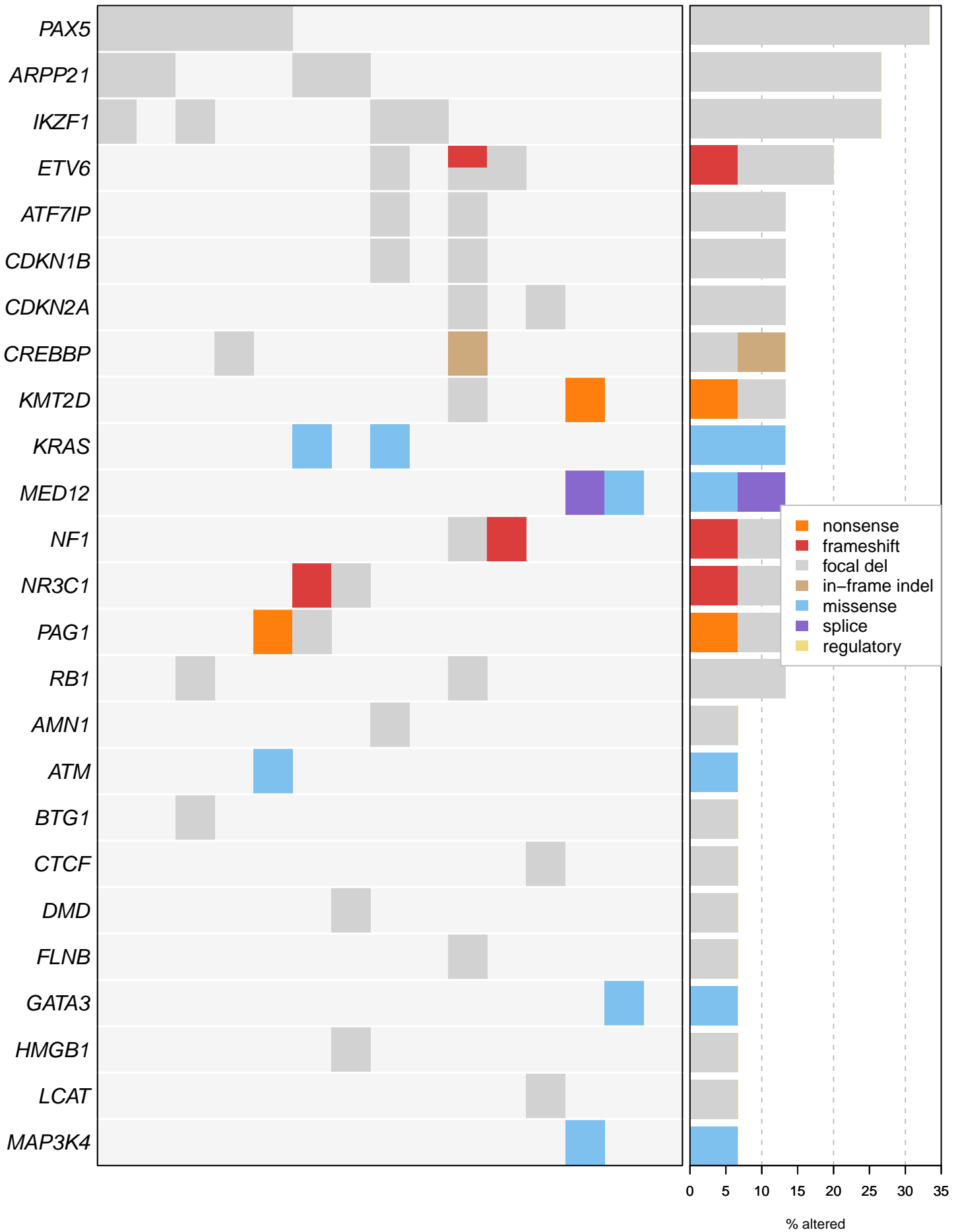
BCL2/MYC (n=3) B-ALL



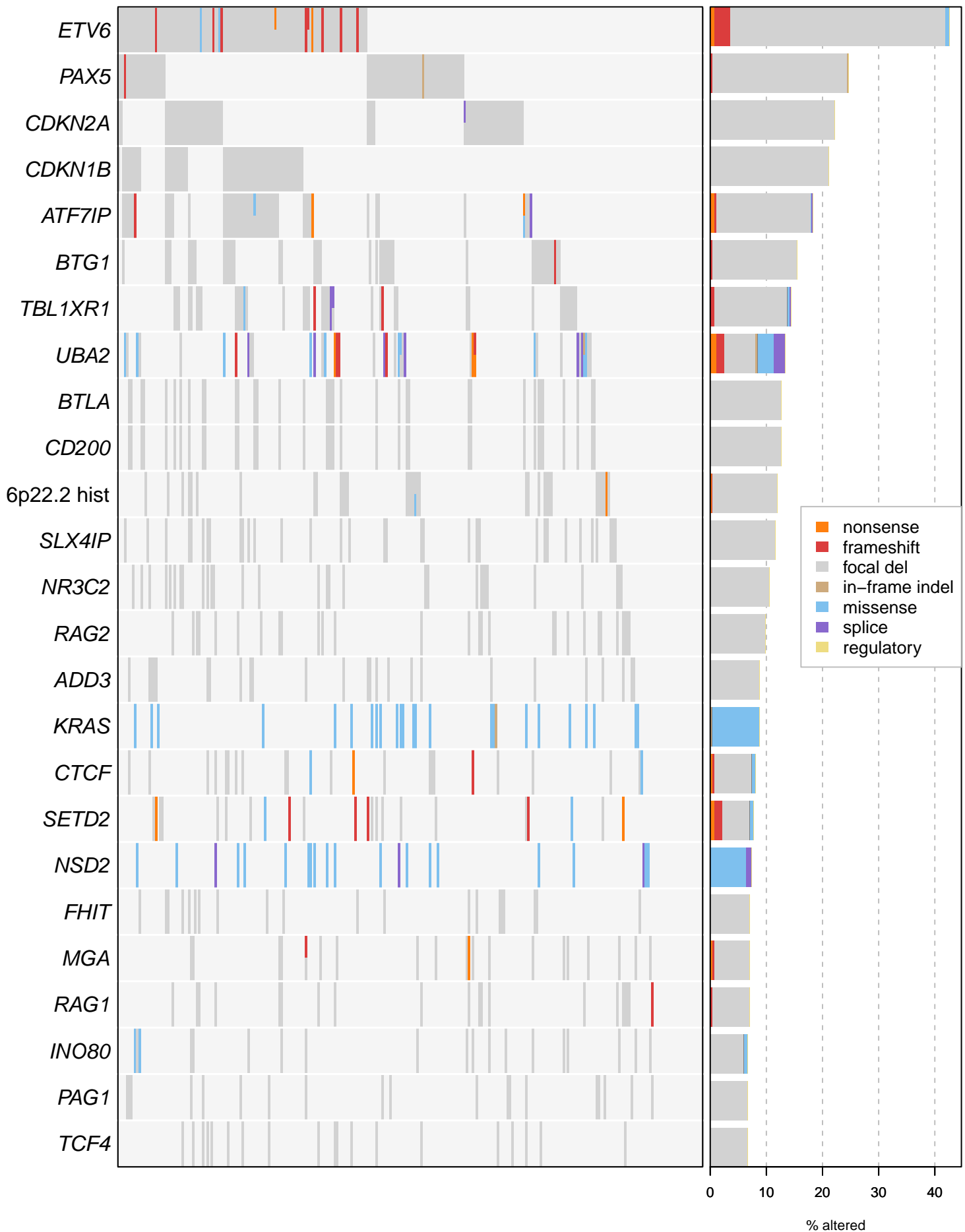
DUX4 (n=65) B-ALL



ETV6-RUNX1-like (n=15) B-ALL



ETV6-RUNX1 (n=284) B-ALL



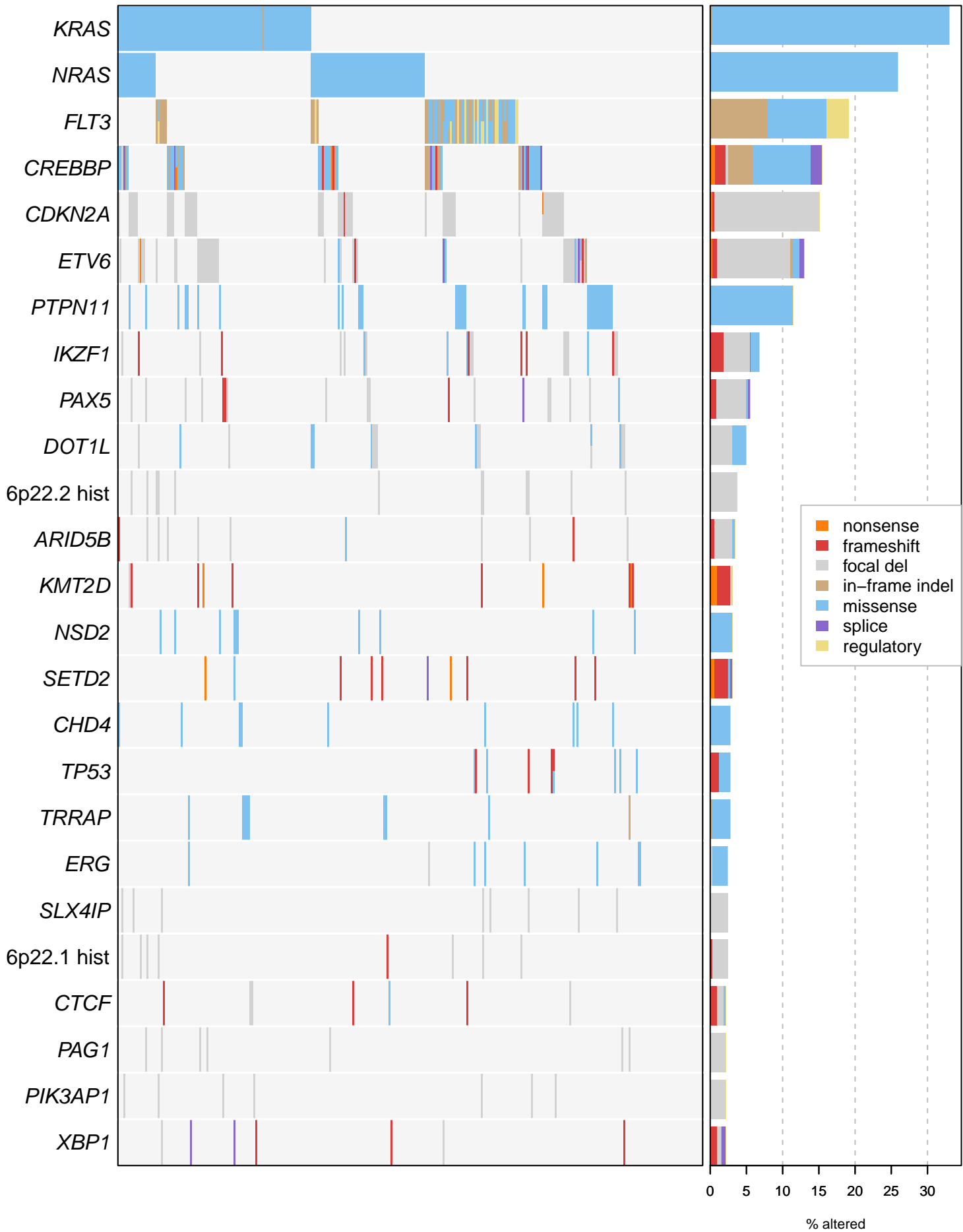
HLF (n=9) B-ALL



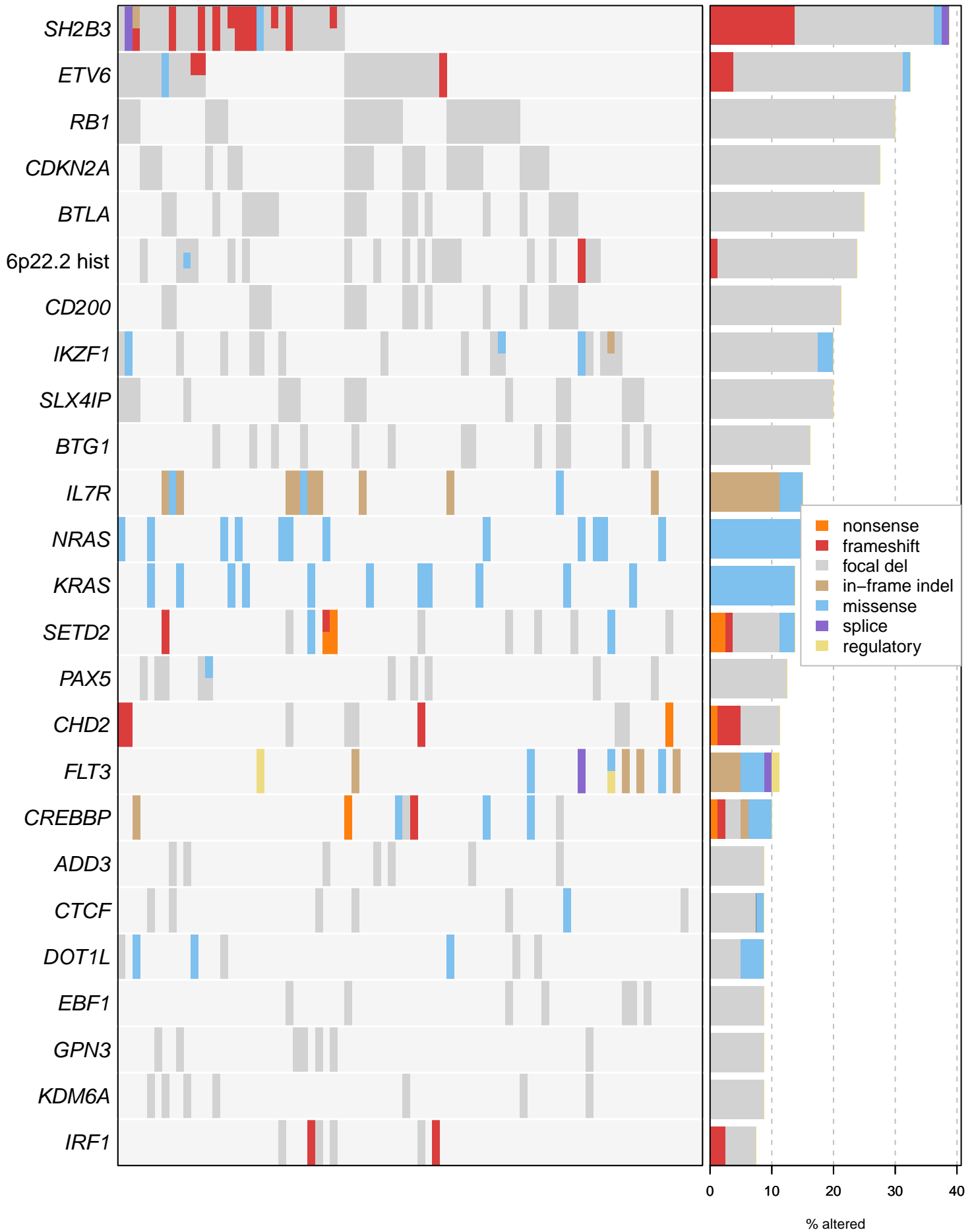
HOXA (n=65) T-ALL



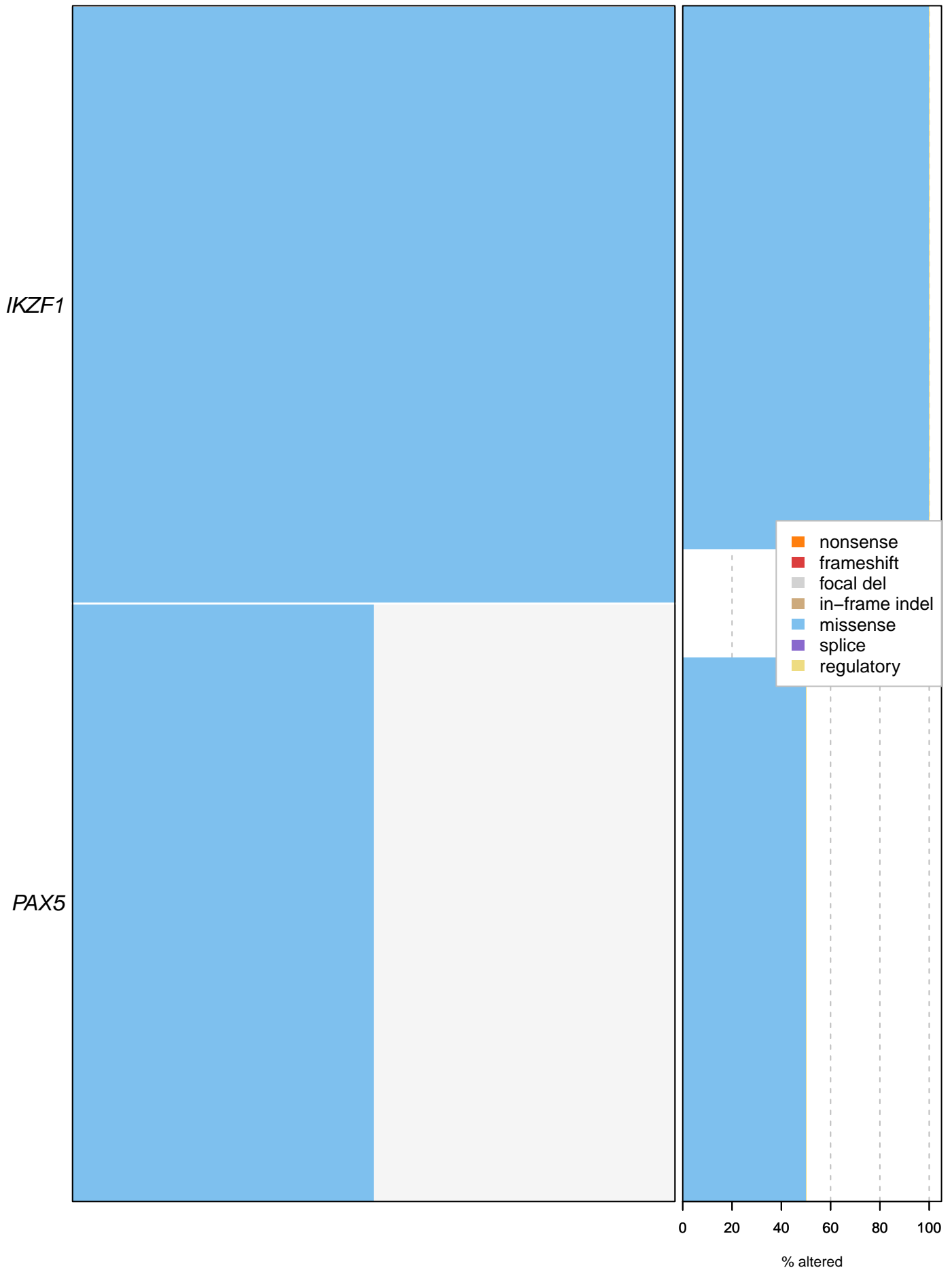
Hyperdiploid (n=324) B-ALL



iAMP21 (n=80) B-ALL



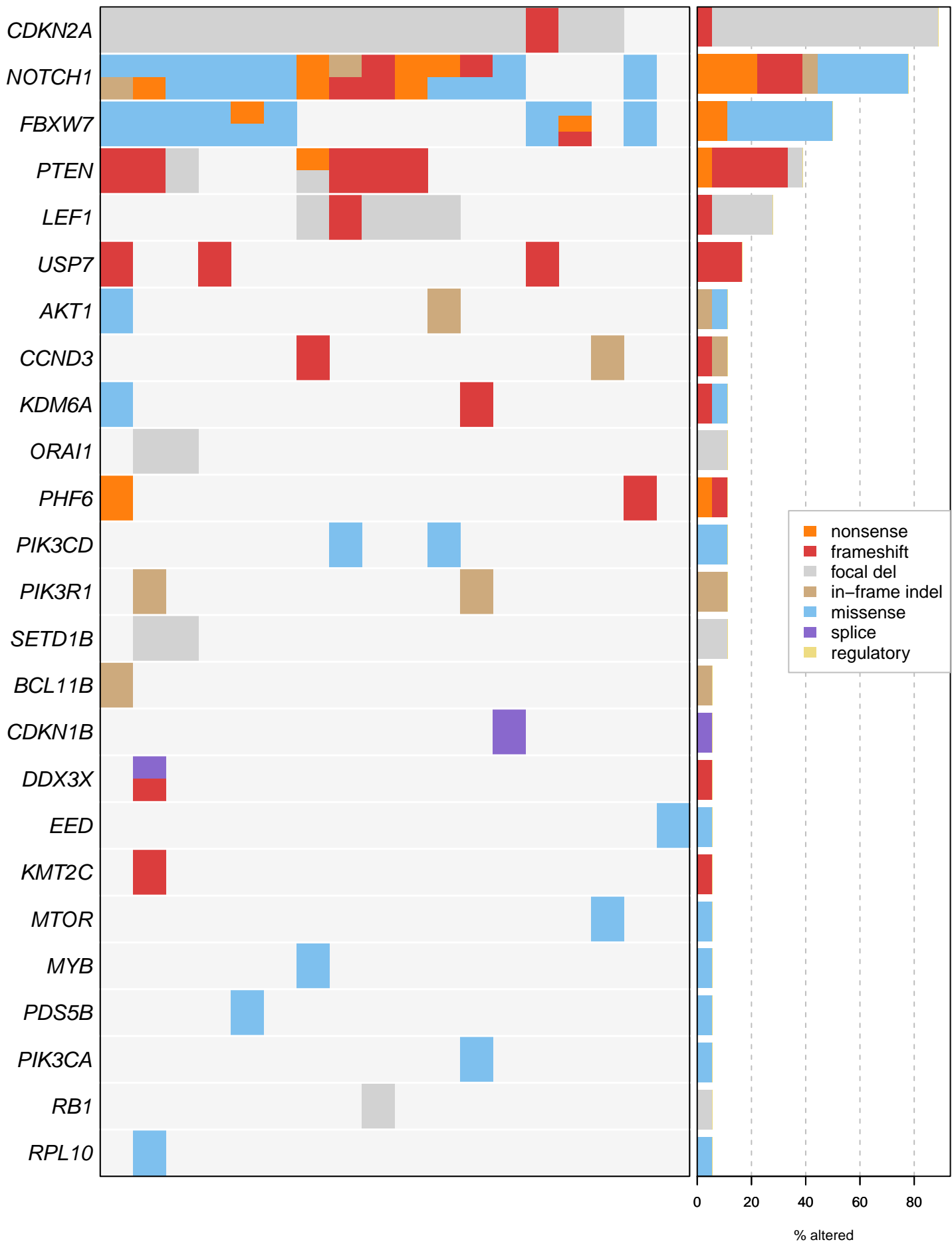
IKZF1 N159Y (n=2) B-ALL



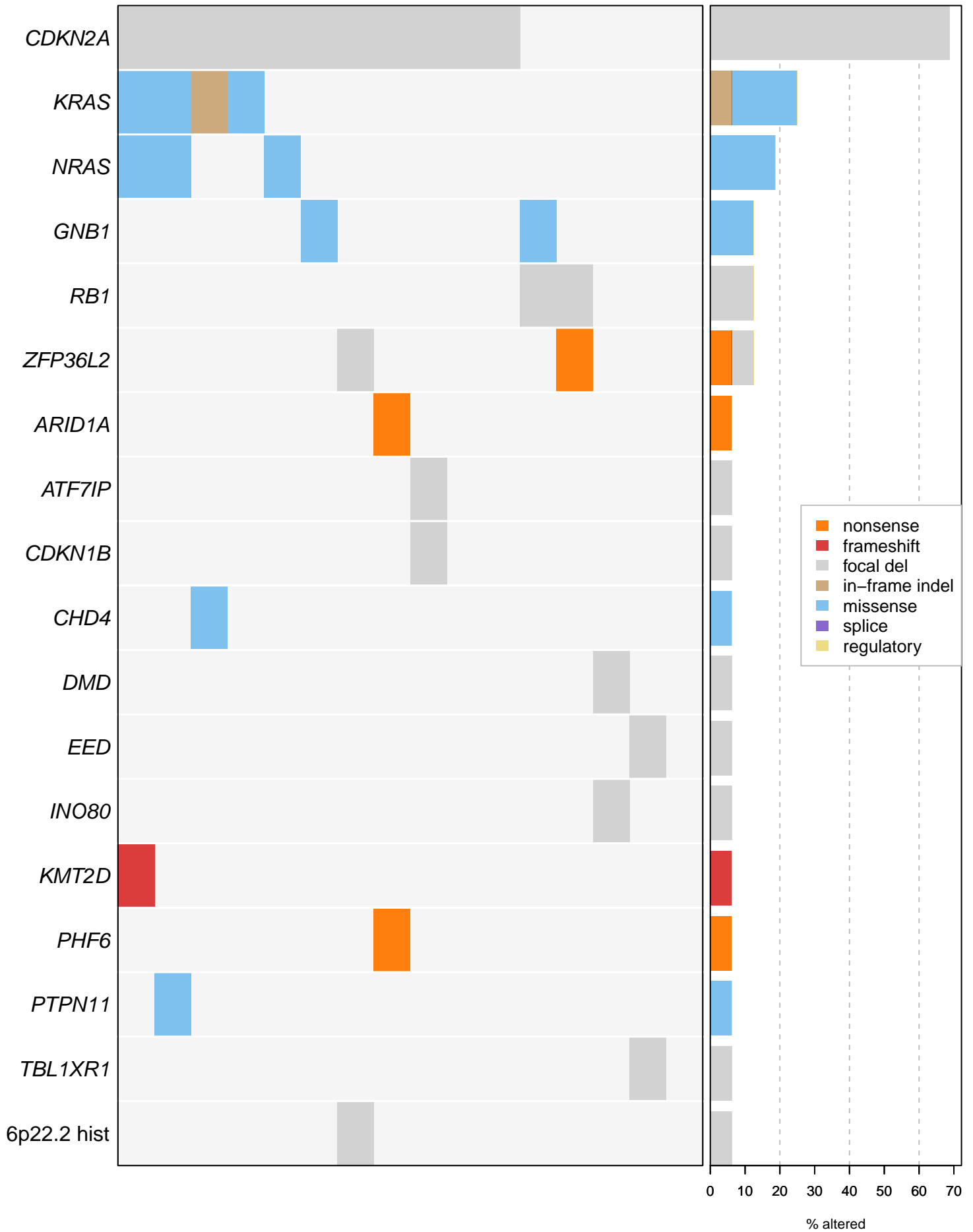
KMT2A (n=50) B-ALL



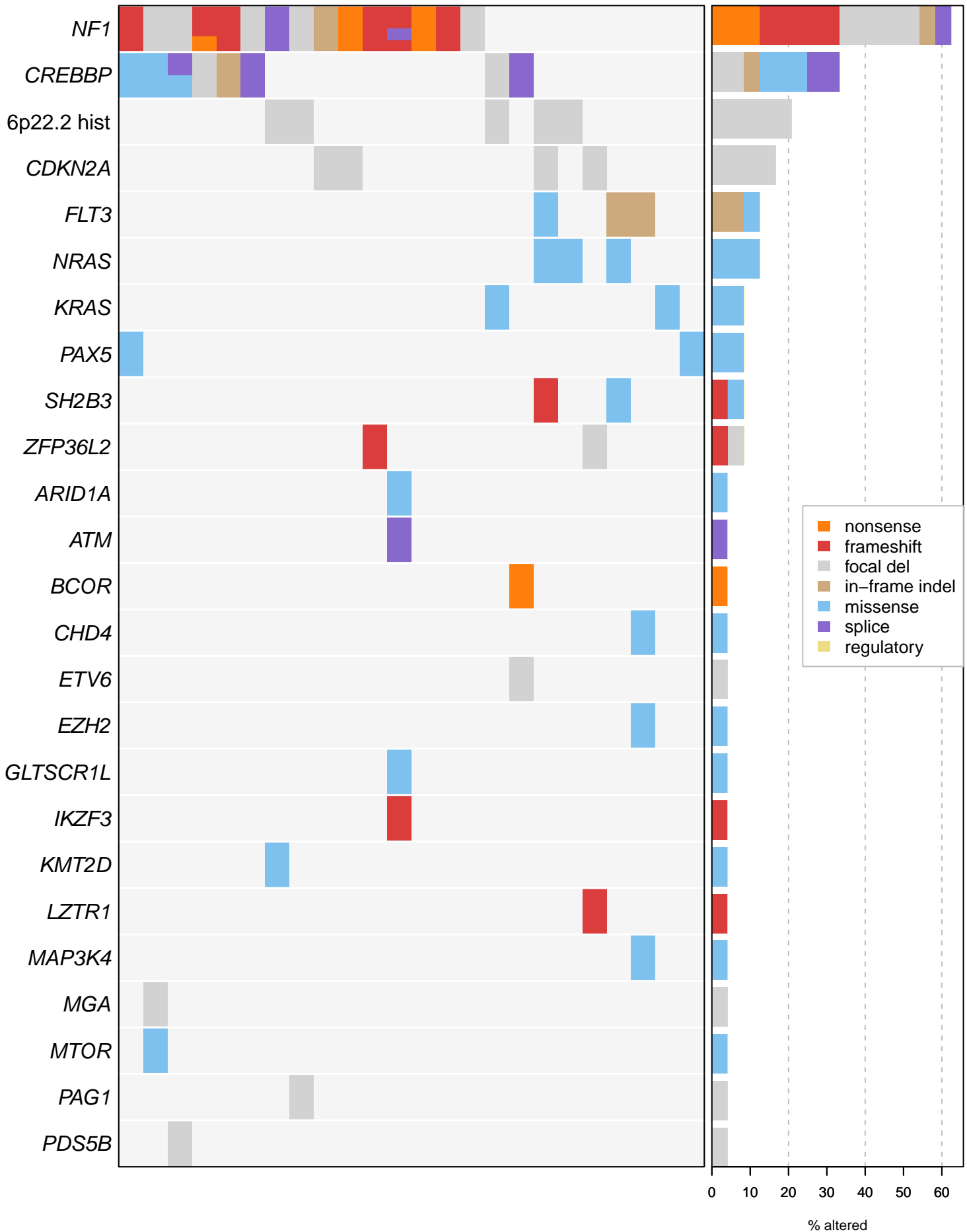
LMO1/2 (n=18) T-ALL



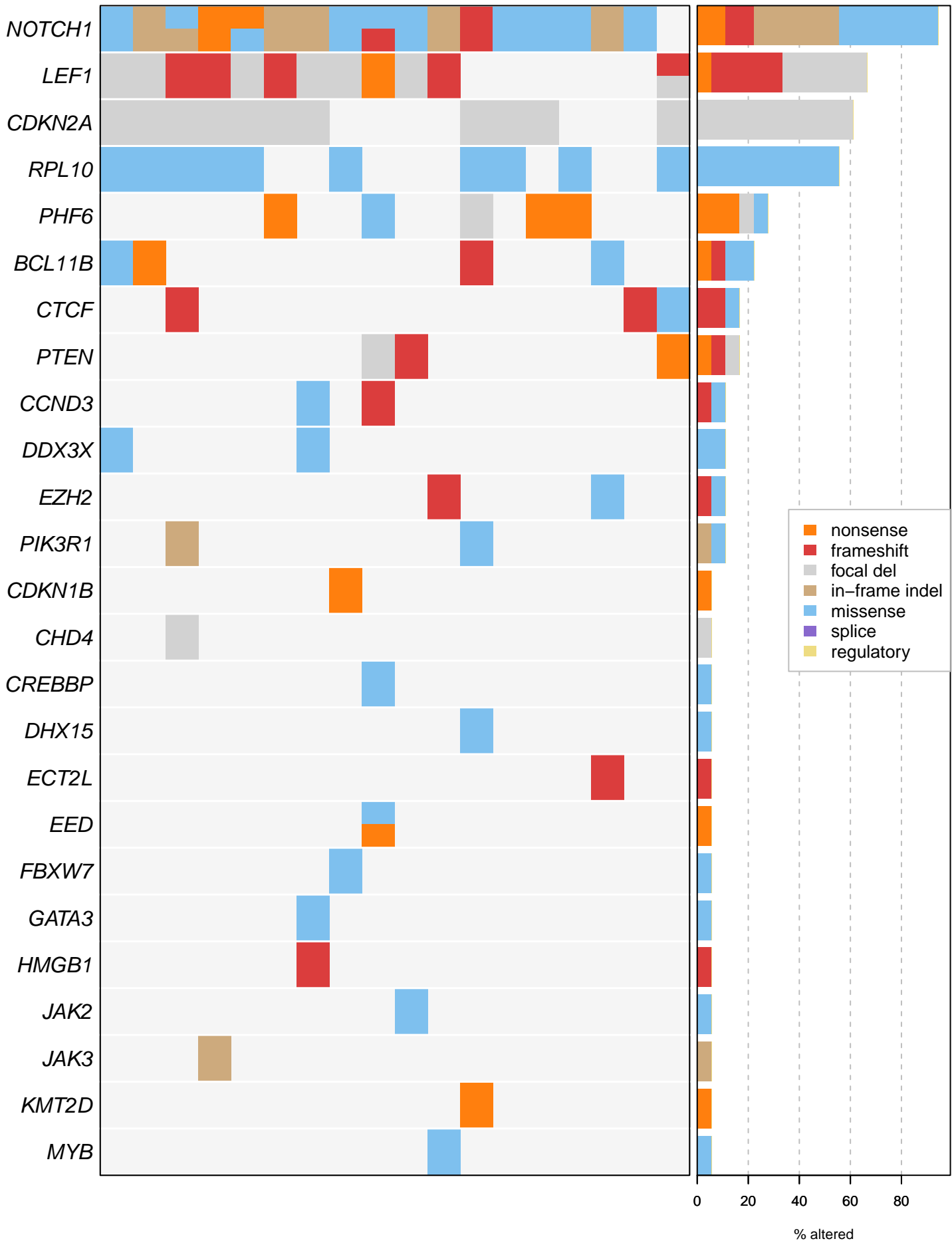
MEF2D (n=16) B-ALL



Near haploid (n=24) B-ALL



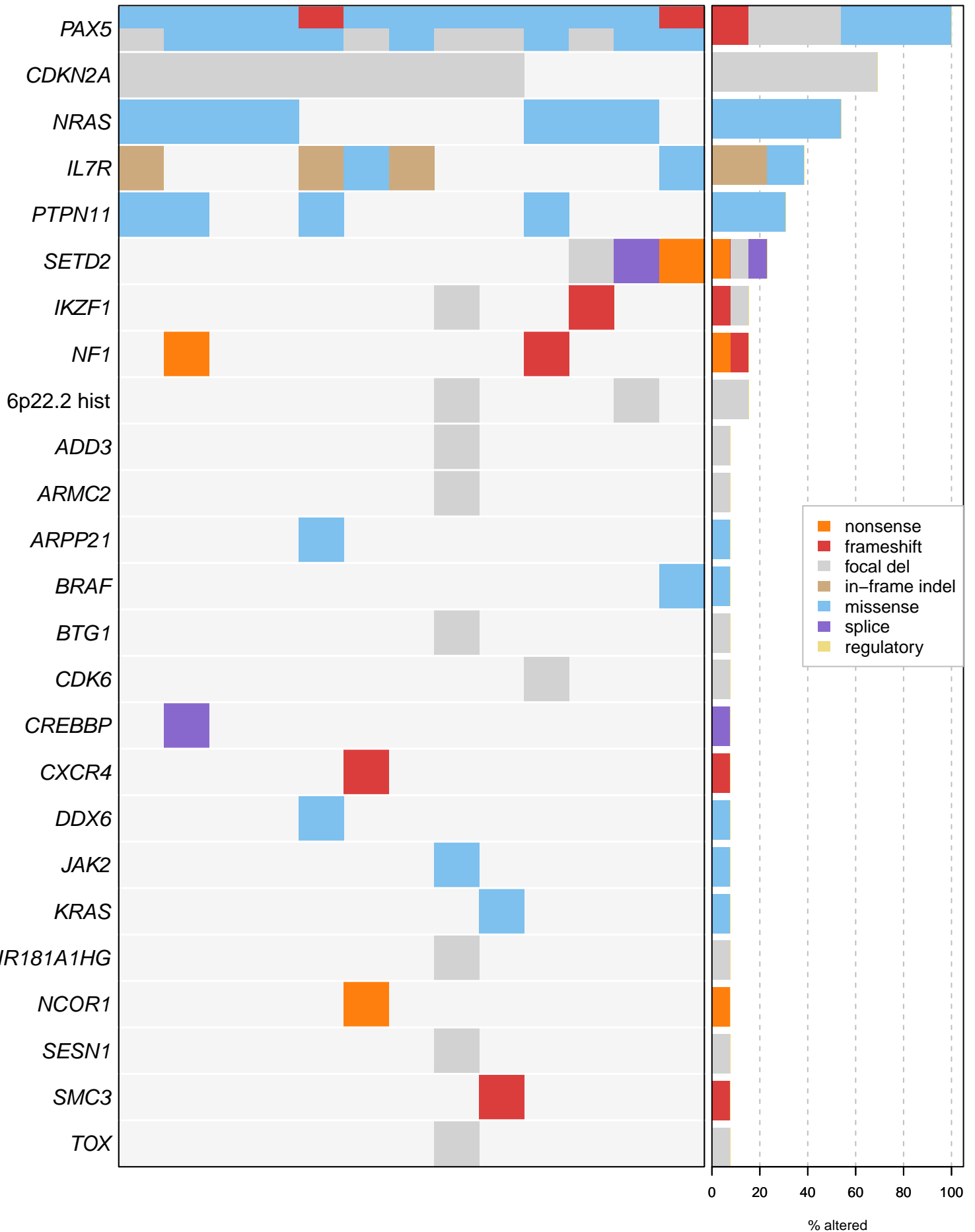
NKX2-1 (n=18) T-ALL



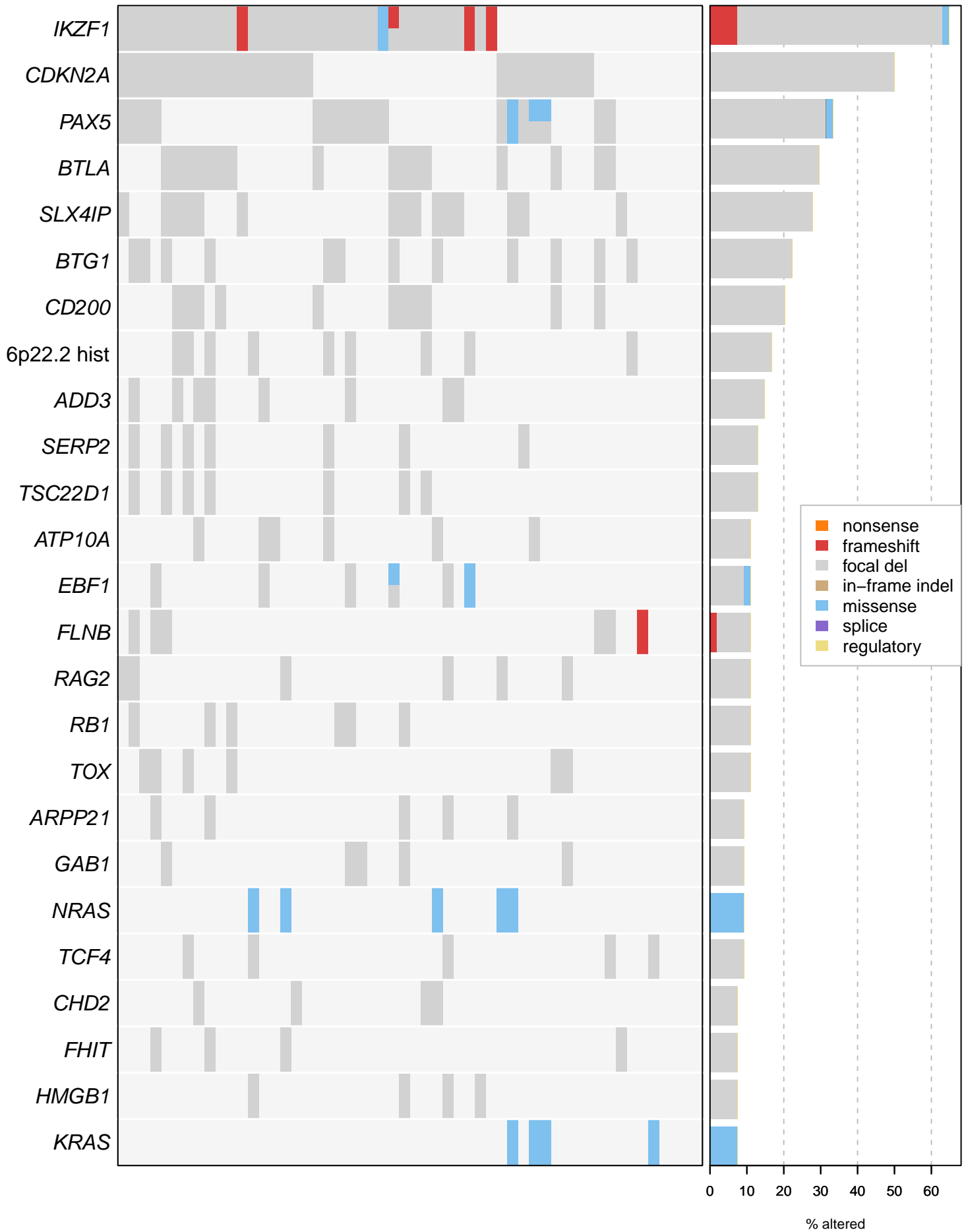
NUTM1 (n=4) B-ALL



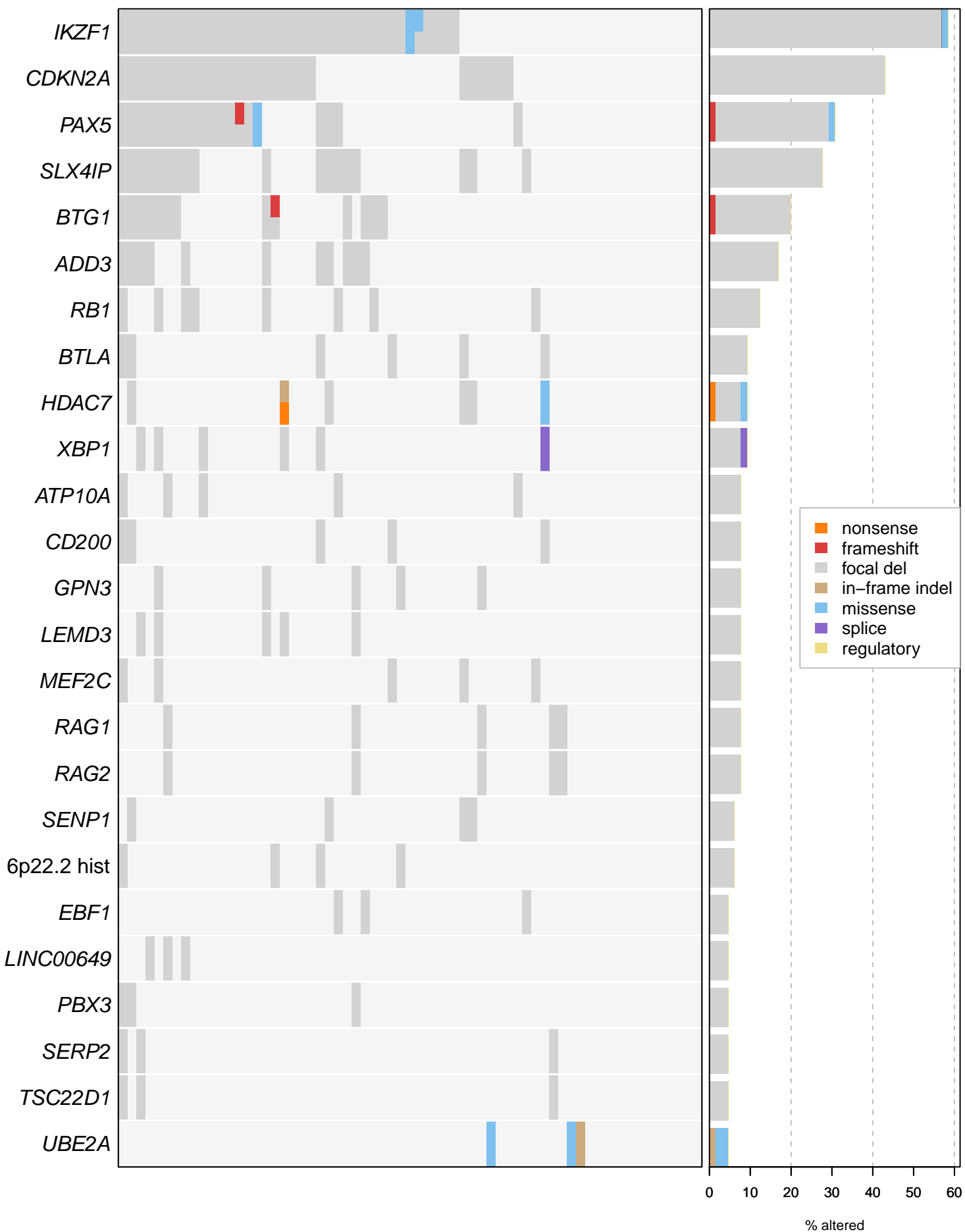
PAX5 P80R (n=13) B-ALL



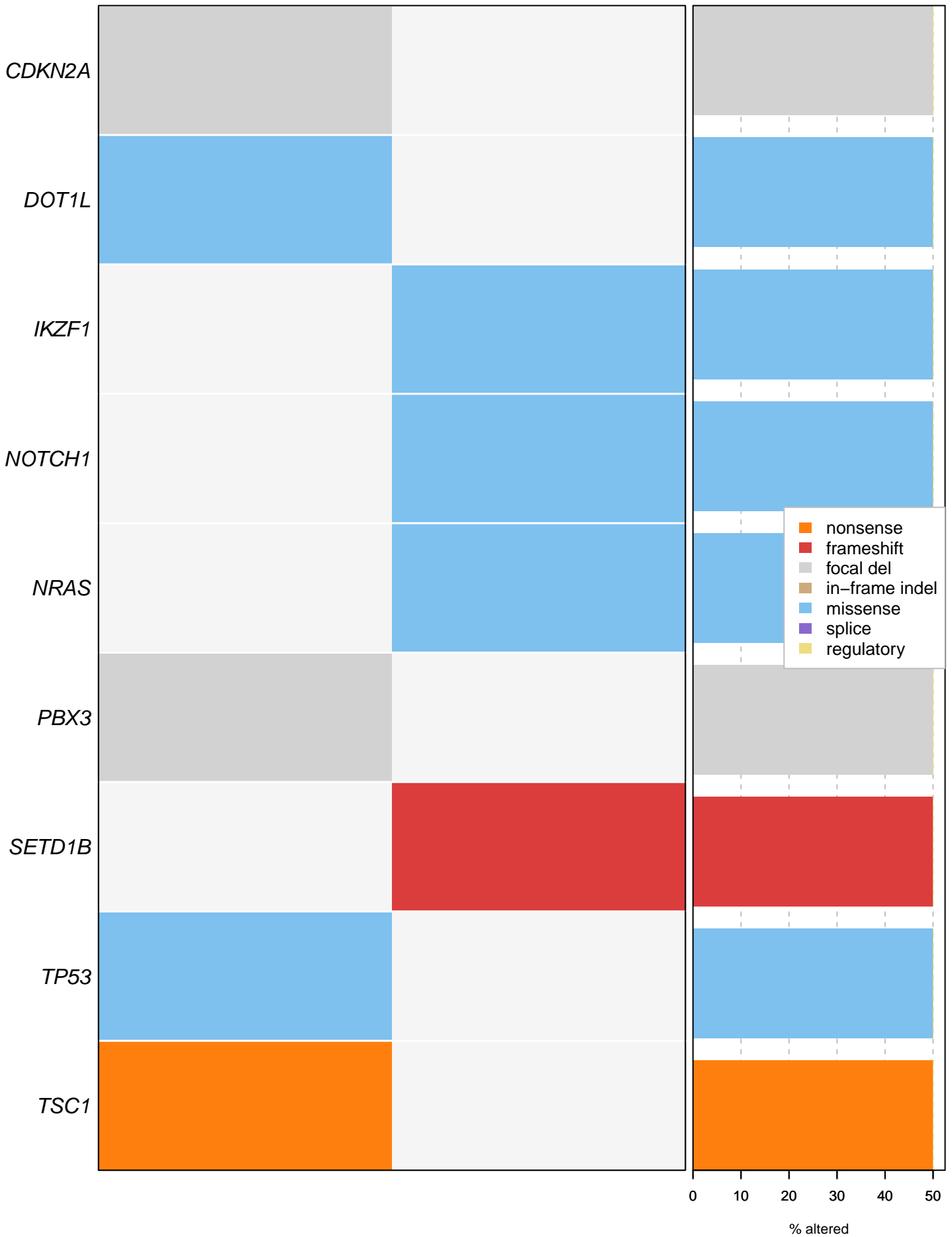
Ph-like other (n=54) B-ALL



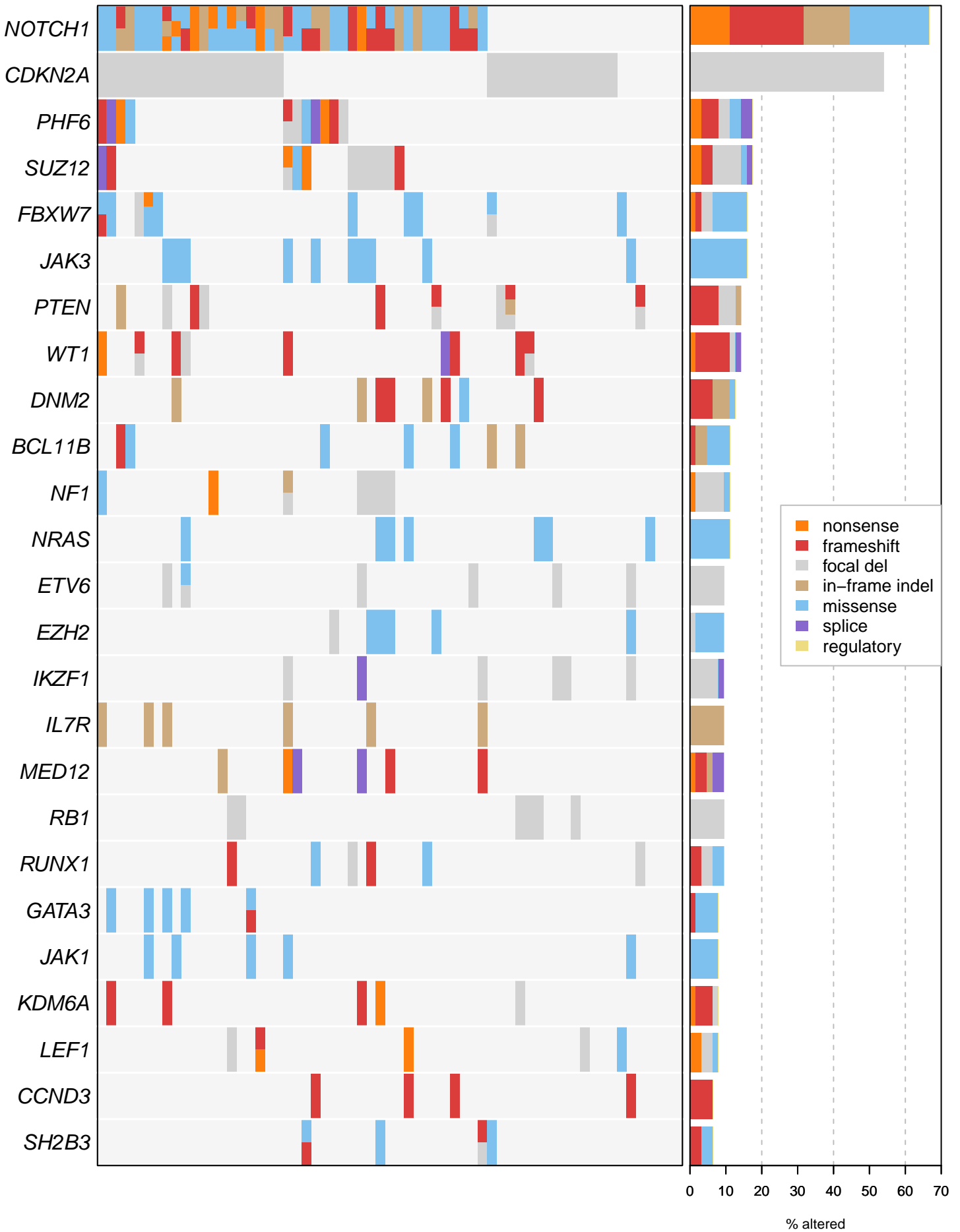
Ph (n=65) B-ALL



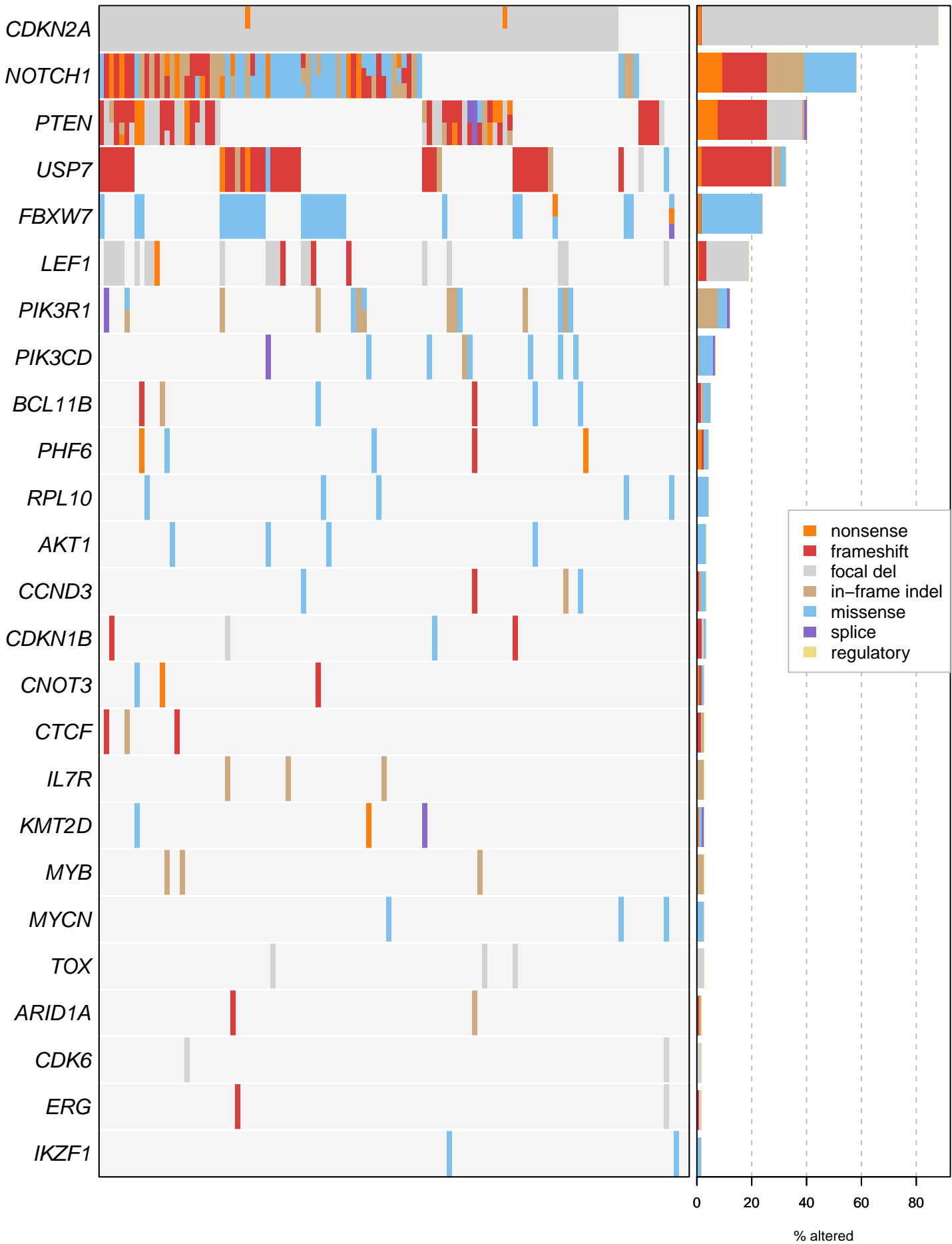
SPI1 (n=2) T-ALL



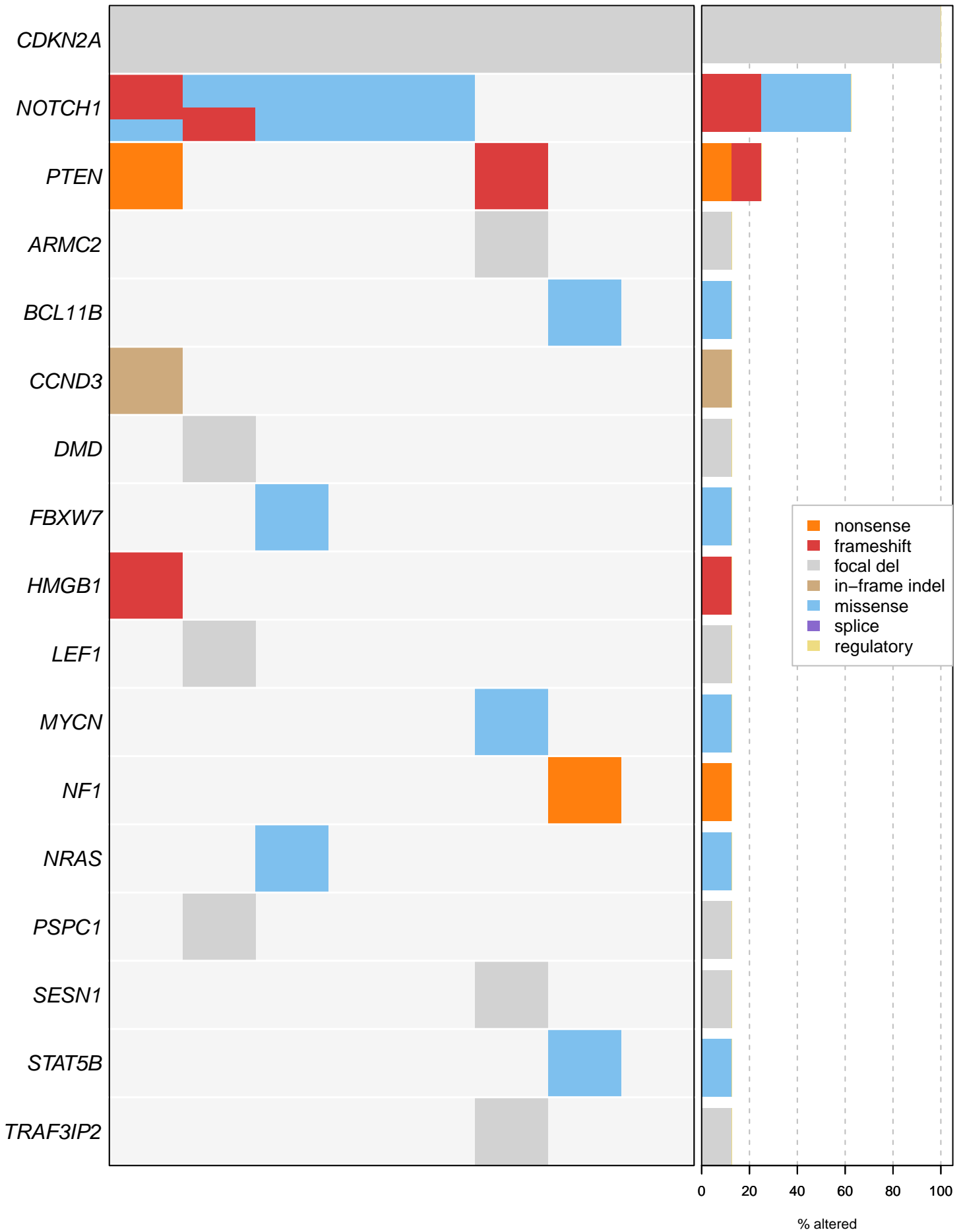
T-other (n=63) T-ALL



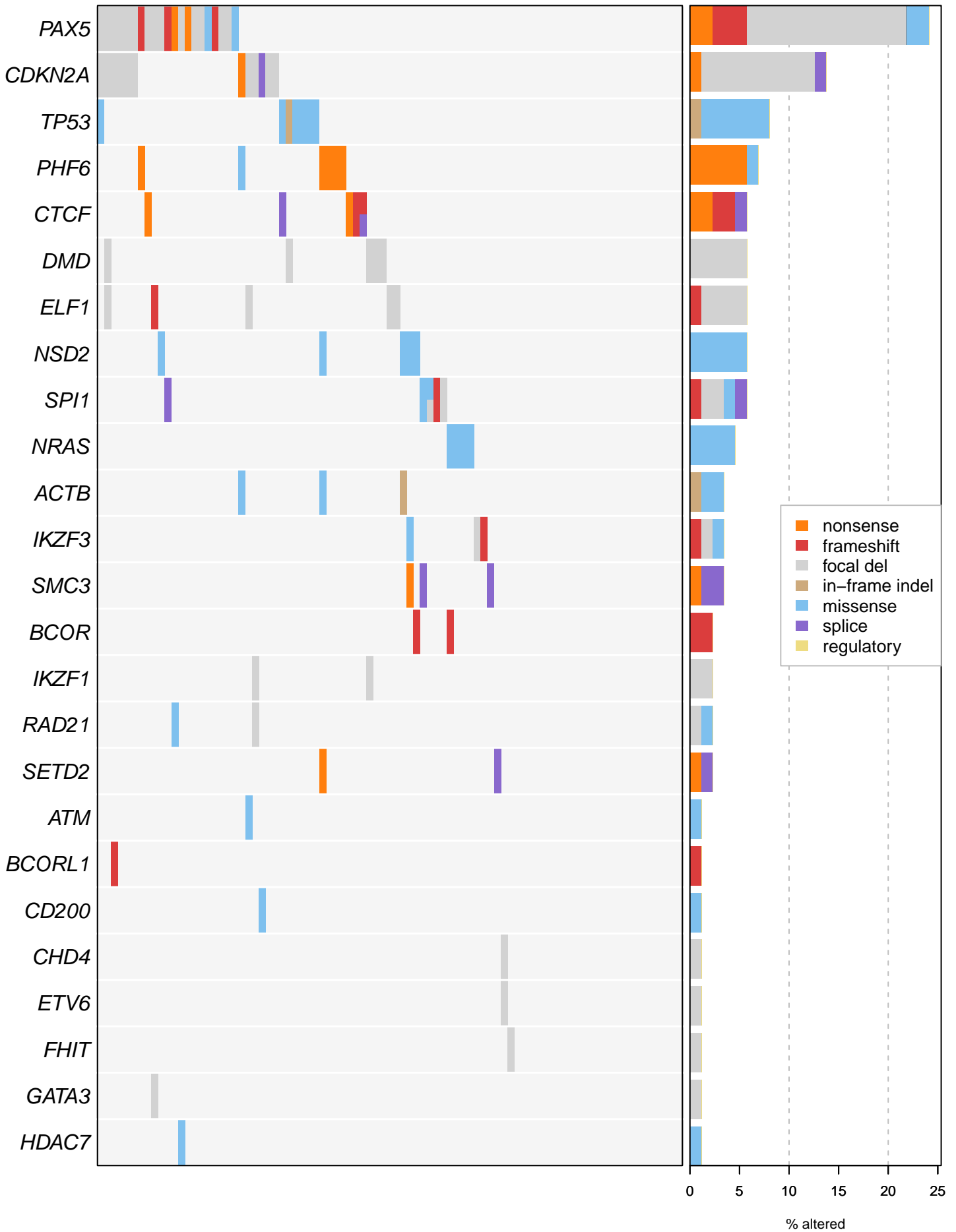
TAL1 (n=117) T-ALL



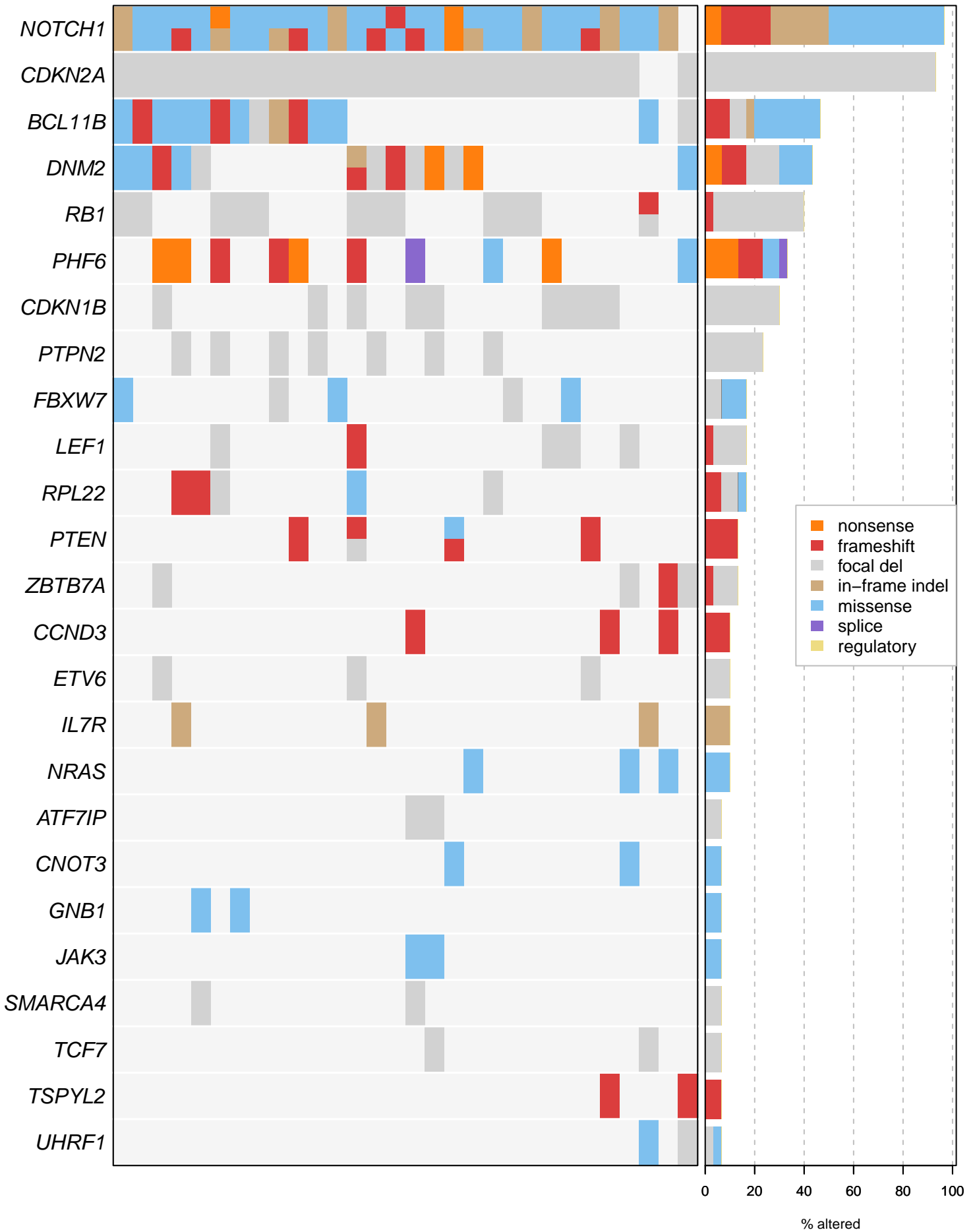
TAL2 (n=8) T-ALL



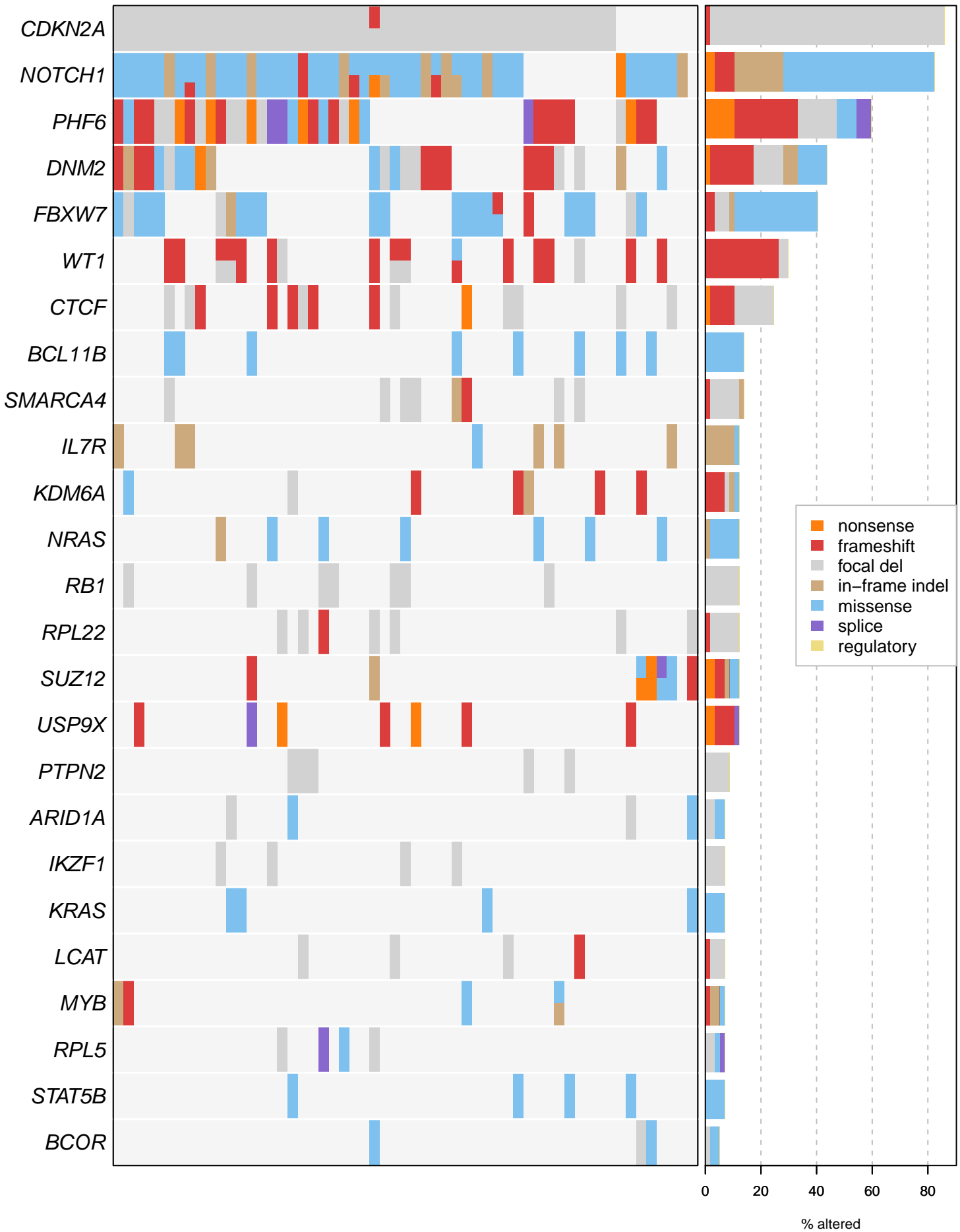
TCF3-PBX1 (n=87) B-ALL



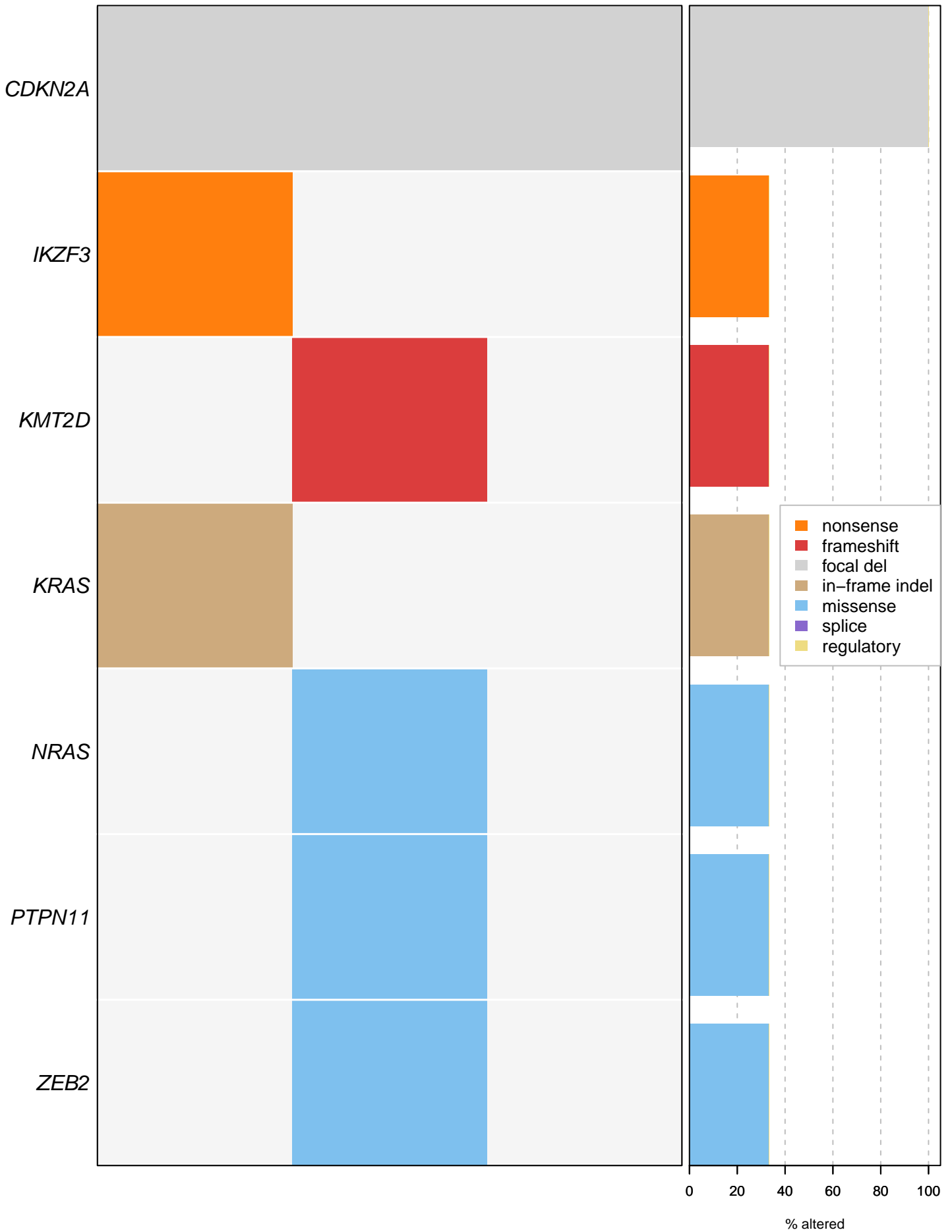
TLX1 (n=30) T-ALL



TLX3 (n=57) T-ALL



ZEB2_CEBP (n=3) B-ALL



ZNF384 (n=20) B-ALL

