

---

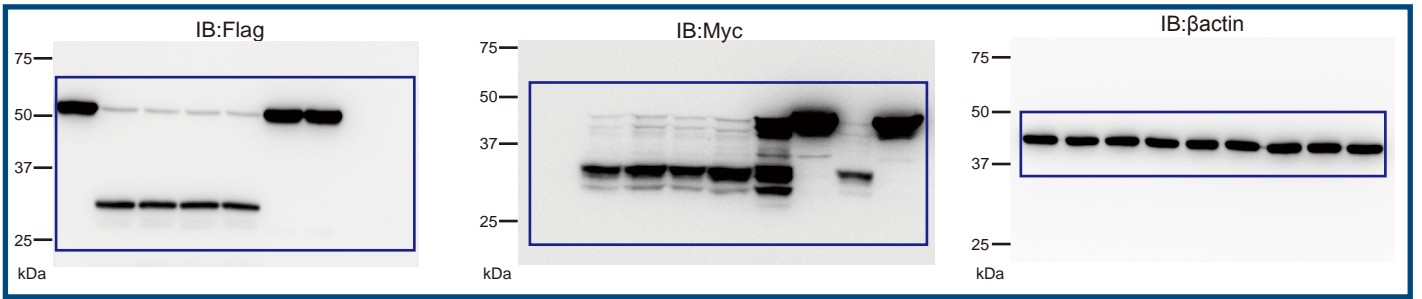
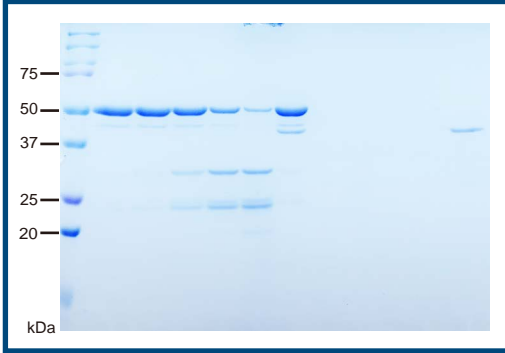
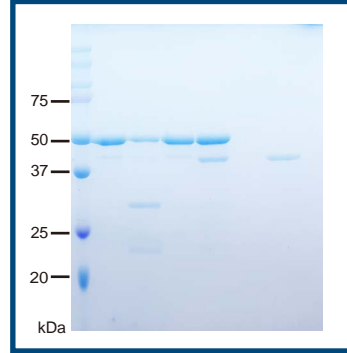
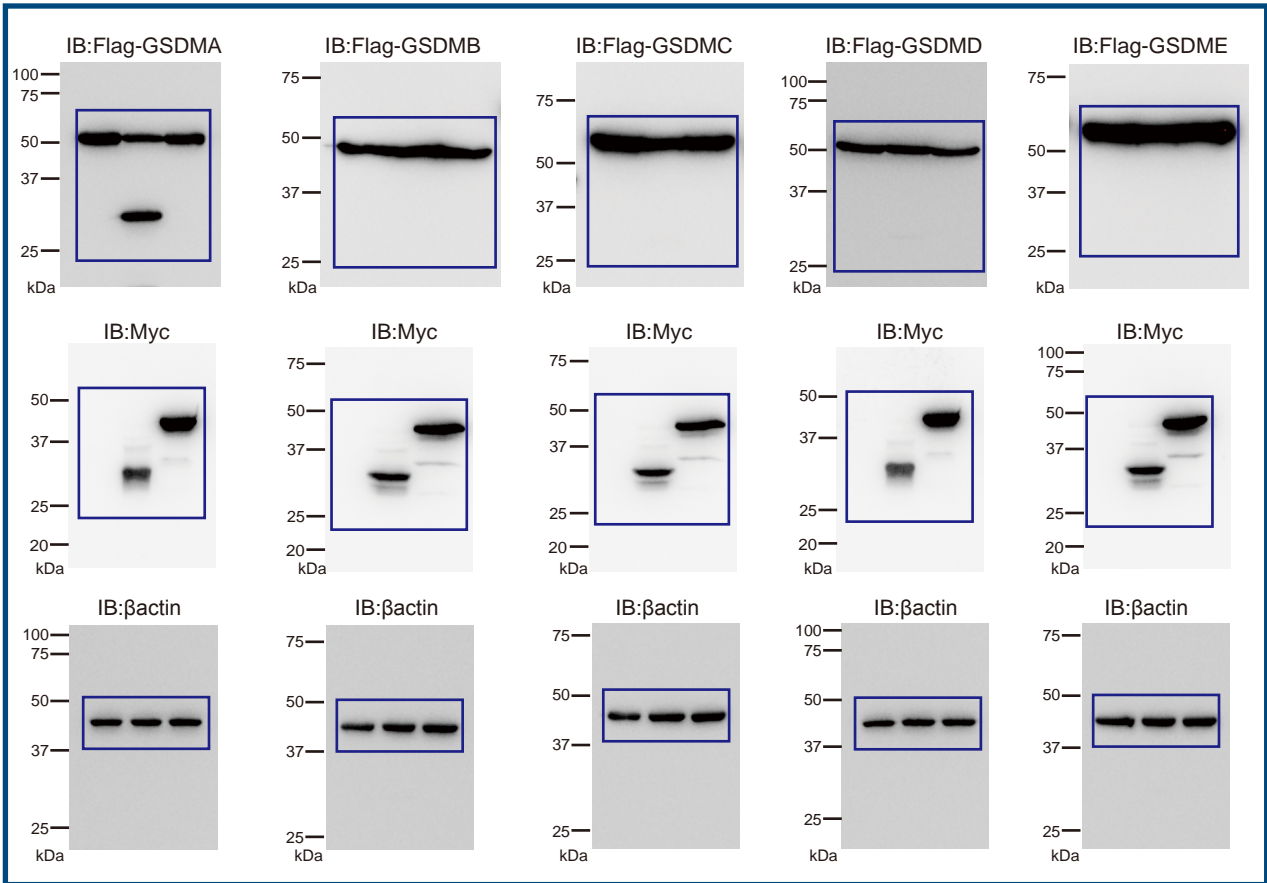
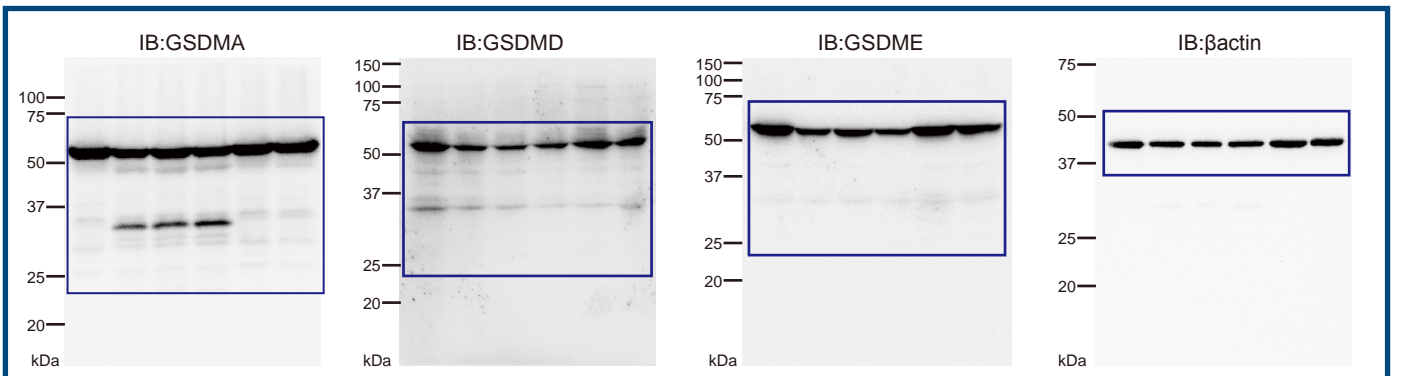
**Supplementary information**

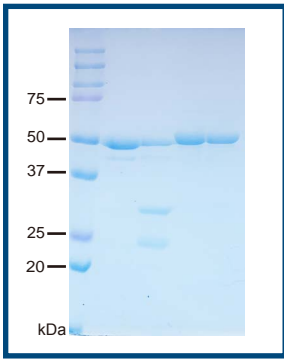
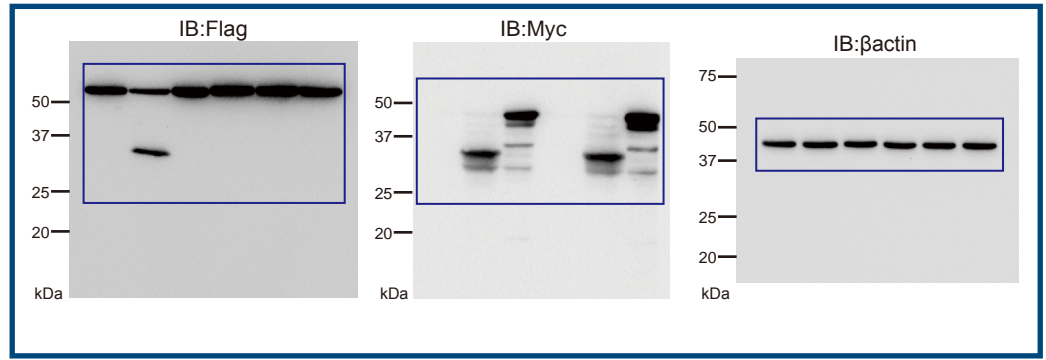
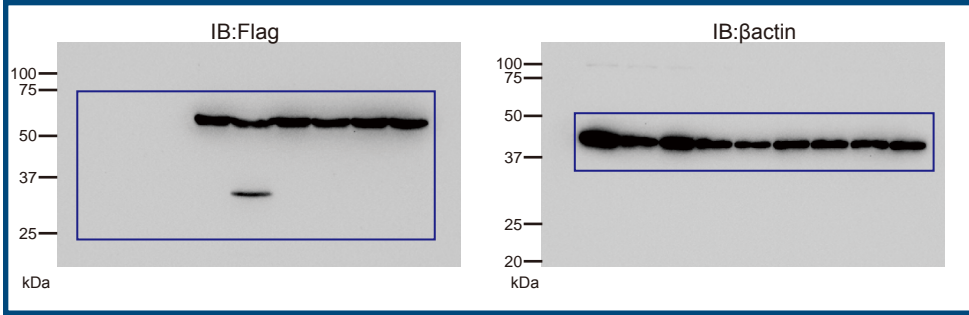
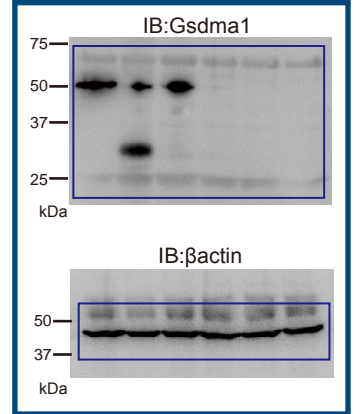
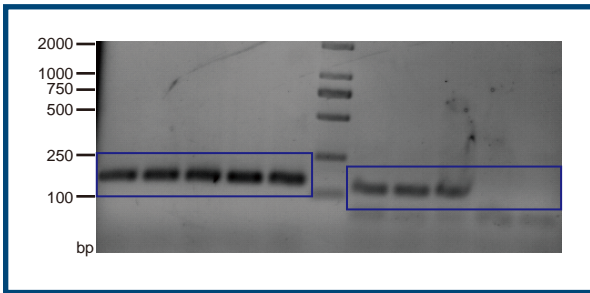
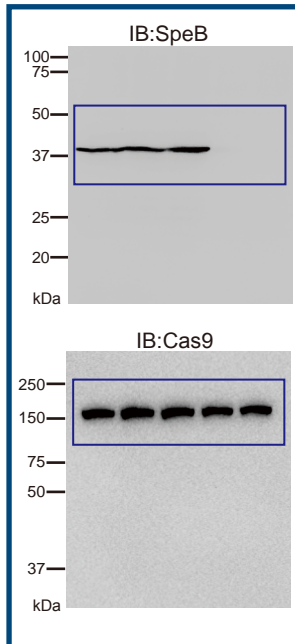
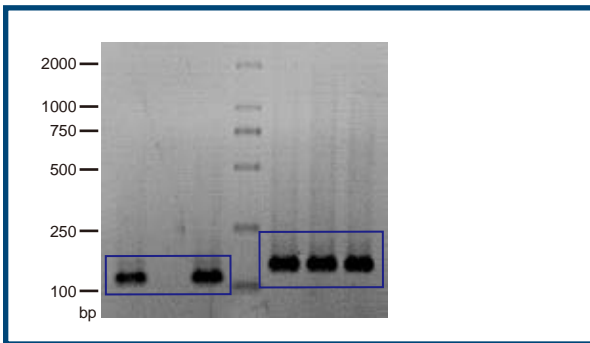
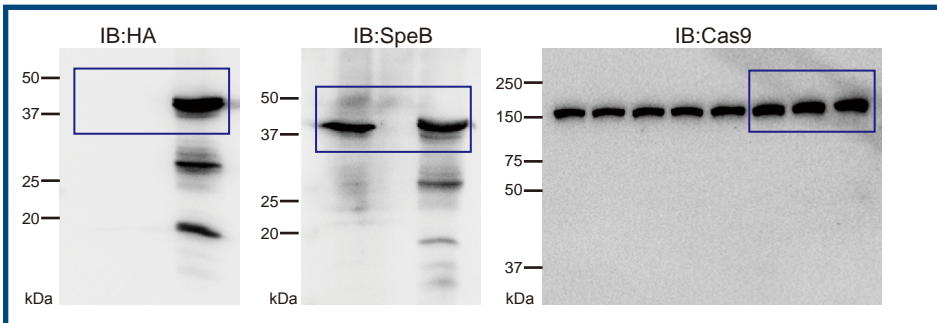
---

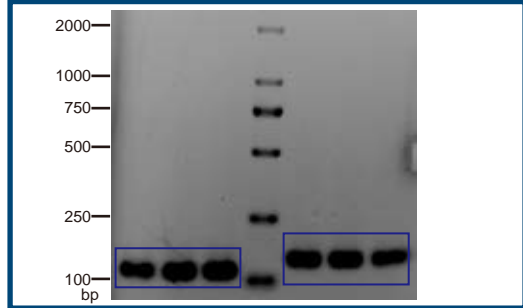
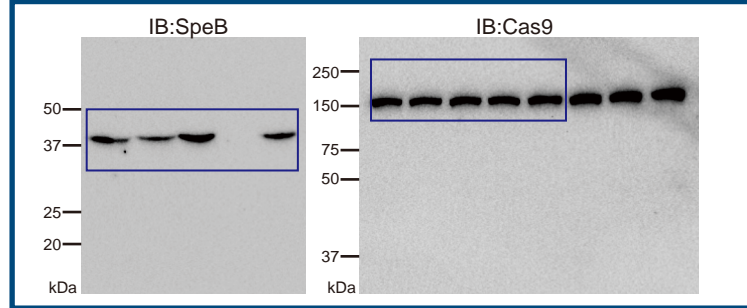
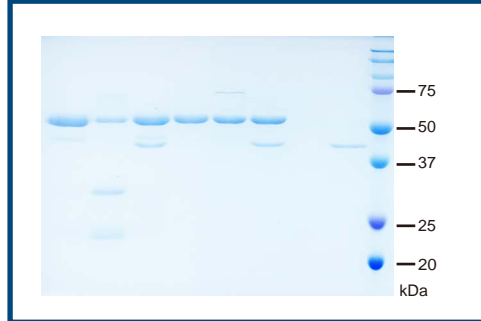
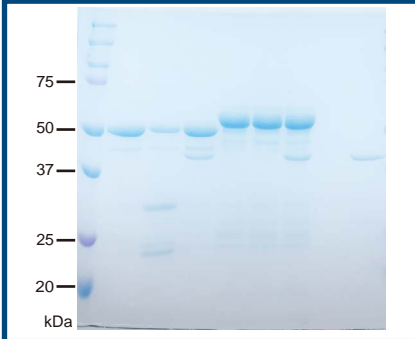
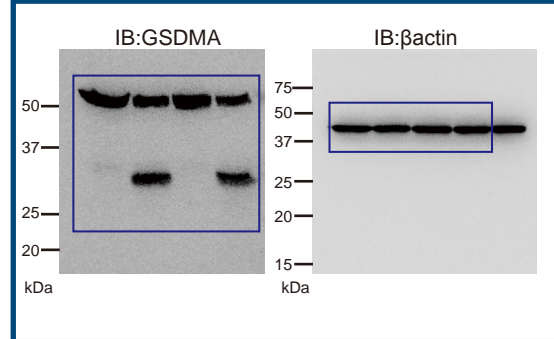
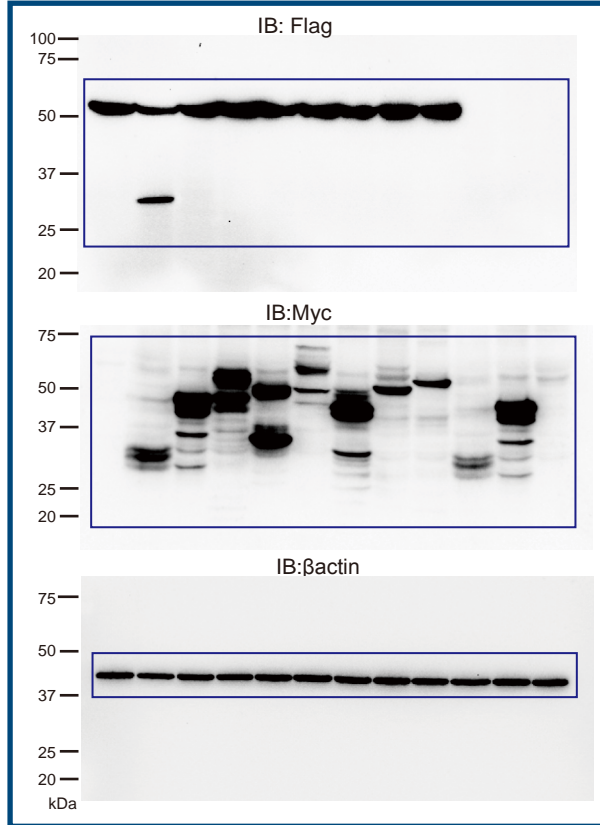
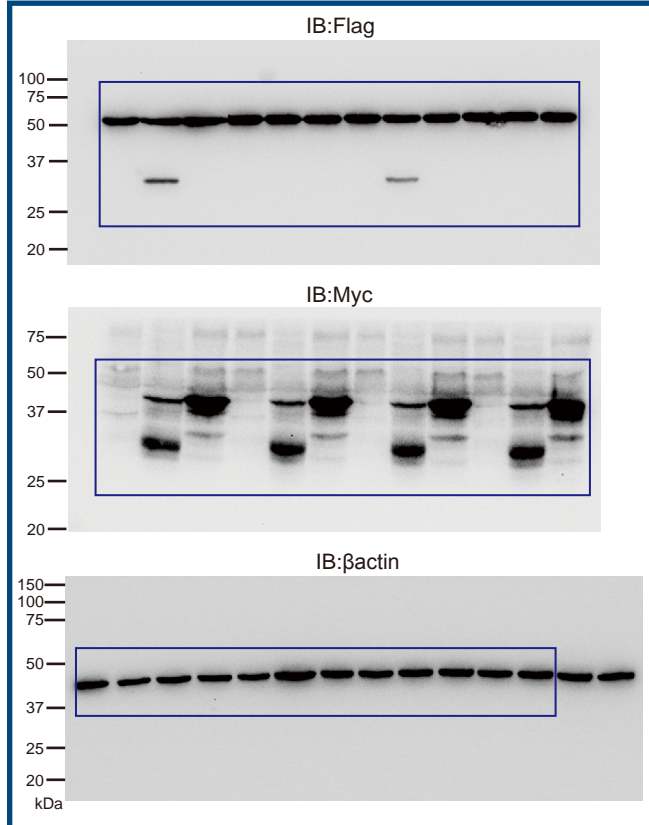
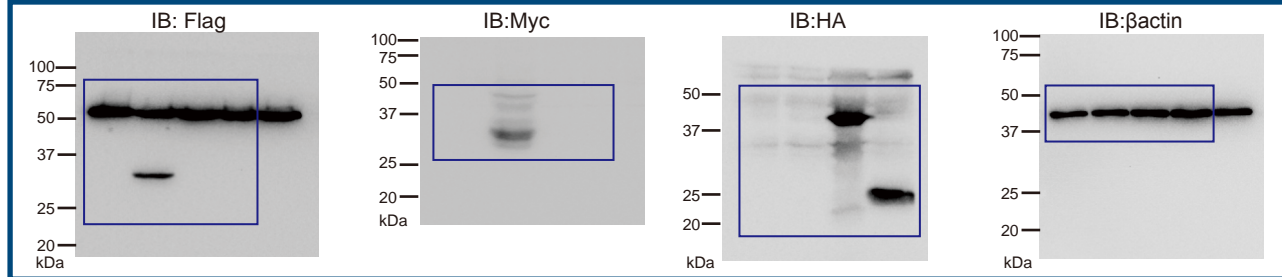
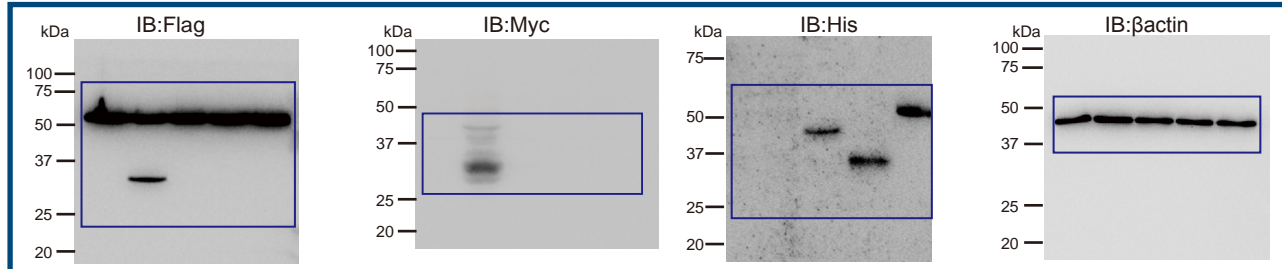
**Streptococcal pyrogenic exotoxin B cleaves  
GSDMA and triggers pyroptosis**

---

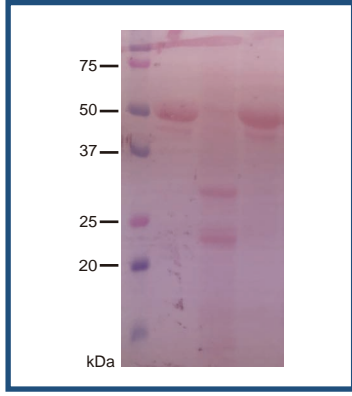
In the format provided by the  
authors and unedited

**Fig. 3a****Fig. 3b****Fig. 3c****Fig. 3d****Fig. 3e**

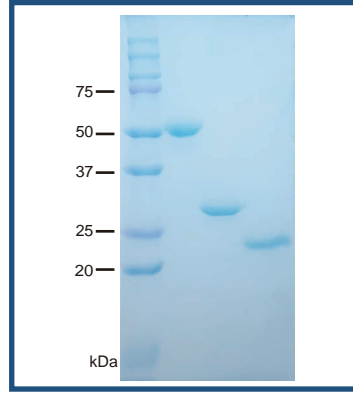
**Fig. 3f****Fig. 3g****Fig. 3i****Fig.4f****Extended Data Fig.1b****Extended Data Fig. 1c****Extended Data Fig.2a****Extended Data Fig. 2b**

**Extended Data Fig.3f****Extended Data Fig. 3f****Extended Data Fig. 5a****Extended Data Fig. 5b****Extended Data Fig. 5c****Extended Data Fig. 5f****Extended Data Fig. 5j****Extended Data Fig. 5g****Extended Data Fig. 5h**

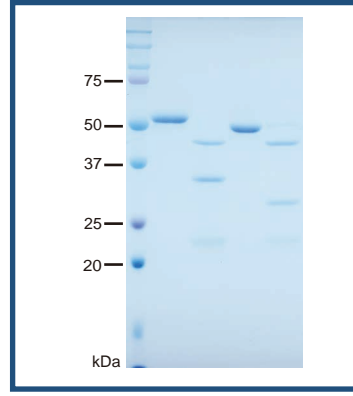
Extended Data Fig. 5i



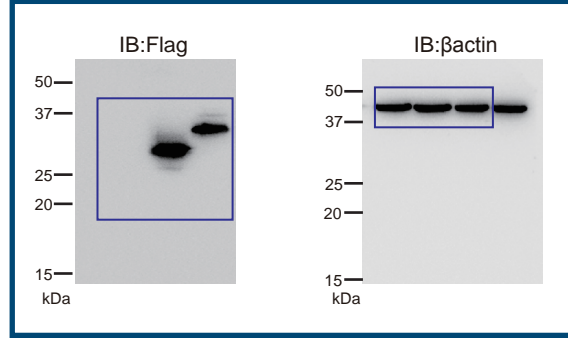
Extended Data Fig. 6a



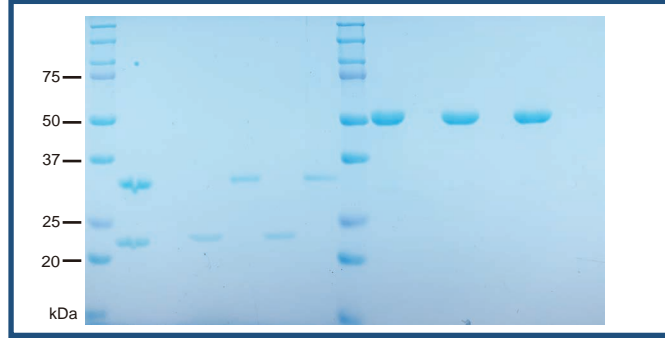
Extended Data Fig. 7a



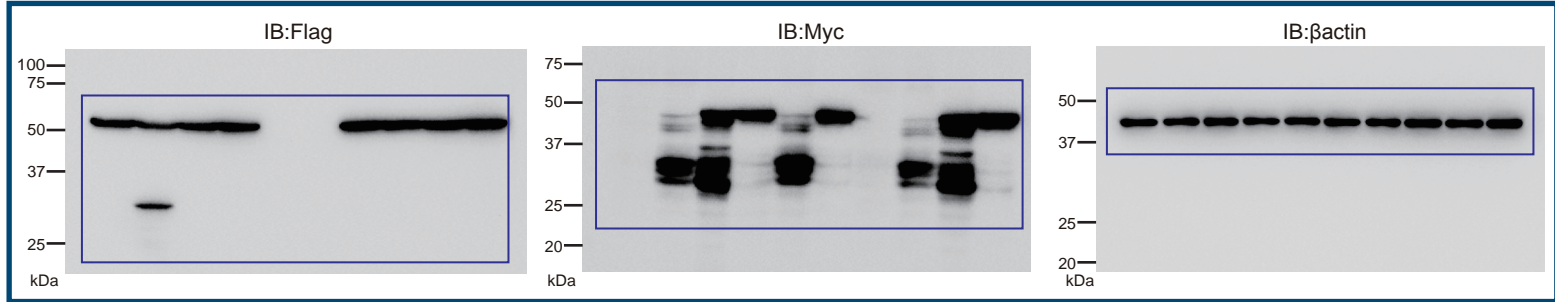
Extended Data Fig. 7d



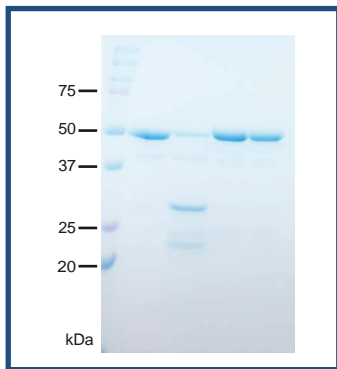
Extended Data Fig. 8b



Extended Data Fig. 10a



Extended Data Fig. 10b



Extended Data Fig. 10c

