

1 **Dissecting the correlates of N-terminal prohormone brain natriuretic peptide**
2 **in acute infective endocarditis - Infection**

3
4 Lorenzo Bertolino^a, Maria Paola Ursi^a, Domenico Iossa^a, Arta Karruli^a, Fabiana D'Amico^a, Rosa Zampino^{a,b}, Giovanni
5 Dialetto^c, Marisa De Feo^c, Emanuele Durante-Mangoni^{b,d}; on behalf of the Monaldi Hospital Cardiovascular Infection
6 Study Group (see Appendix)

7
8 ^aDepartment of Advanced Medical & Surgical Sciences, University of Campania 'L. Vanvitelli', Napoli, Italy

9 ^bUnit of Infectious and Transplant Medicine, AORN Ospedali dei Colli-Monaldi Hospital, Napoli, Italy

10 ^cUnit of Cardiac Surgery, AORN Ospedali dei Colli-Monaldi Hospital, Napoli, Italy

11 ^dDepartment of Precision Medicine, University of Campania 'L. Vanvitelli' Napoli, Italy

12
13
14
15
16
17
18
19
20
21
22
23
24 **Corresponding author:**

25 Emanuele Durante Mangoni, MD PhD

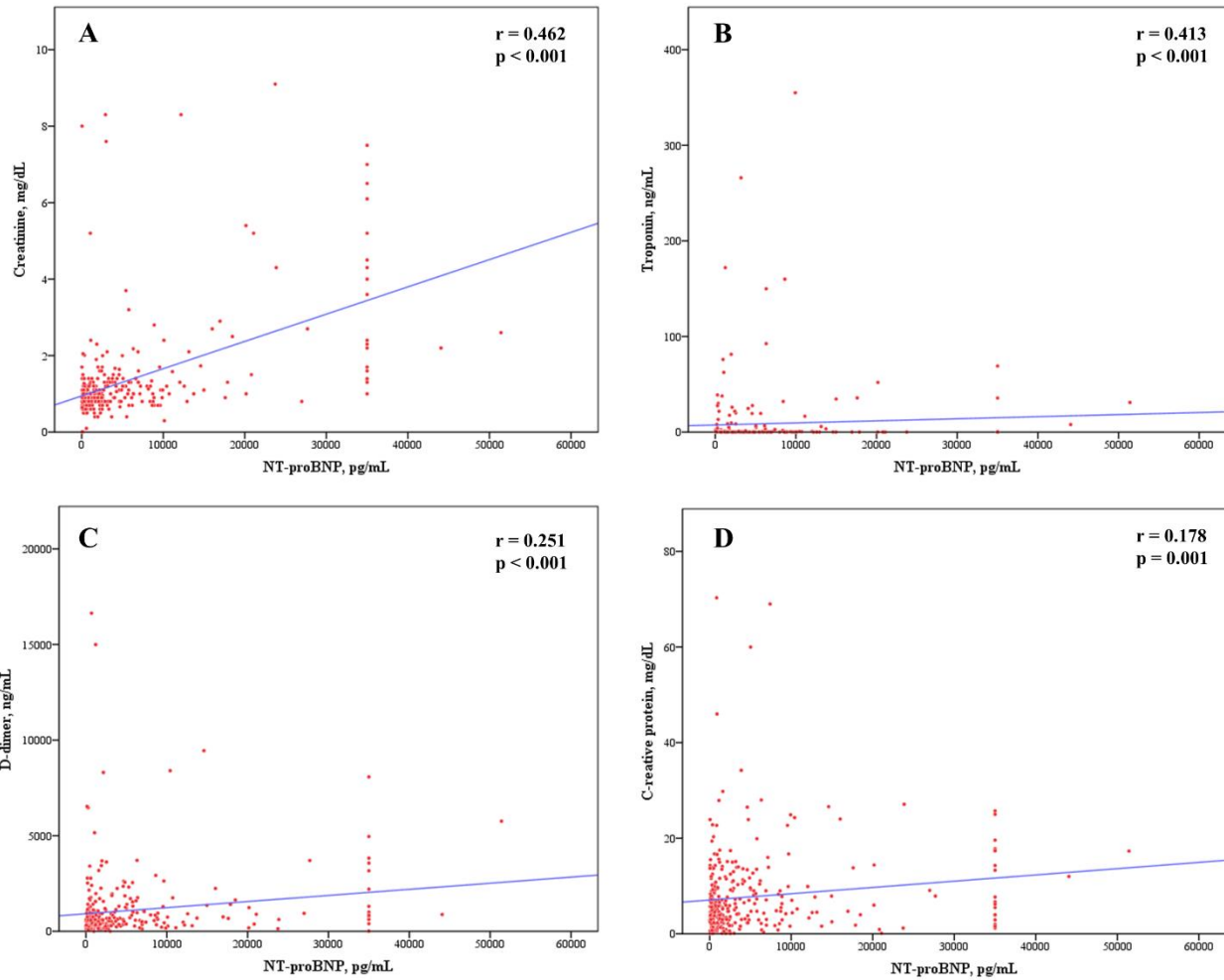
26 Ospedale Monaldi, Piazzale Ettore Ruggieri

27 80131 Napoli, Italy

28 Ph: +39.081.7062475

29 Fax: +39.081.7702645

30 Email: emanuele.durante@unicampania.it

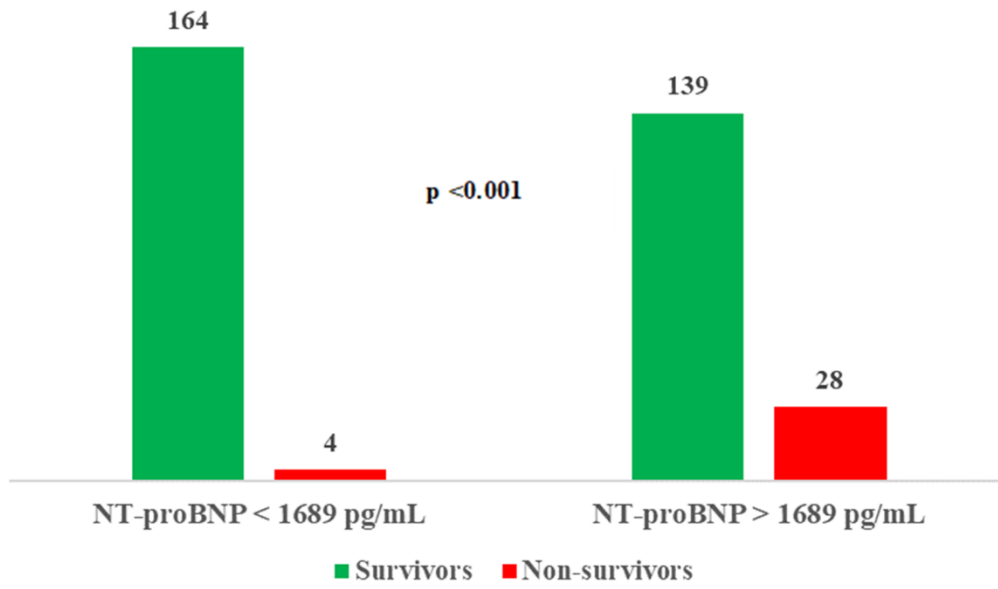


32 **Supplementary Fig 1** Spearman correlation analyses of NT-proBNP levels with other biomarkers. (A) Correlation
 33 between NT-proBNP and creatinine, (B) Correlation between NT-proBNP and hs-troponin I, (C) Correlation between
 34 NT-proBNP and d-dimers, (D) Correlation between NT-proBNP and C-reactive protein

35 *Color in print for this figure is not necessary*

36

37



38

39 **Supplementary Fig 2** Bar chart showing the number of cases with positive or negative in-hospital outcome according to

40 NT-proBNP median value

41 *Color in print for this figure is not necessary*

42

43